

201 TOWER

NOW LEASING
201 SOUTH MAIN STREET
SALT LAKE CITY, UTAH

CHASE

AL
TERCENTI



BOYER



**CUSHMAN &
WAKEFIELD**



2 / 201 TOWER / 201 SOUTH MAIN STREET / SALT LAKE CITY, UTAH

201 TOWER is one of Downtown Salt Lake City's premier office towers, located at 201 S Main Street, with unparalleled views of the Salt Lake Valley. The 24-story, 420,000-square-foot granite and glass building was built in 1991 and houses prominent tenants including Chase Bank, Morgan Stanley, Parsons Behle & Latimer, Manning Curtis Bradshaw & Bednar, Economic Development Corporation of Utah (EDCU), Salt Lake Chamber, and Utah Sports Commission. The project includes a connected underground parking structure, a building amenity conference center, on-site fitness and locker room facility, 24-hour security, and an on-site building manager.

Located in the interior of the block is the beautiful Gallivan Center—a public green space and gathering place. The Utah TRAX rail stop, Gallivan Plaza Station, is steps from 201 Tower for auto-free commuters. Salt Lake City International Airport is within eight miles also accessible via TRAX. The 201 Tower boasts superior highway connectivity, as Interstate 15, Interstate 80, and Interstate 215 are within a 7-minute drive.



201 FEATURES

BUILDING HIGHLIGHTS

High-speed elevators
(9 passenger, 1 freight)

Award-winning, three-stage
cooling system

Connected to fiber optic carriers
with access at each floor

High-speed Internet, satellite TV

Building amenity conference center

Fitness center

PARKING

2.5 stalls per 1,000 SF
1,000-stall underground structure

PROXIMITY

Steps from Gallivan Center

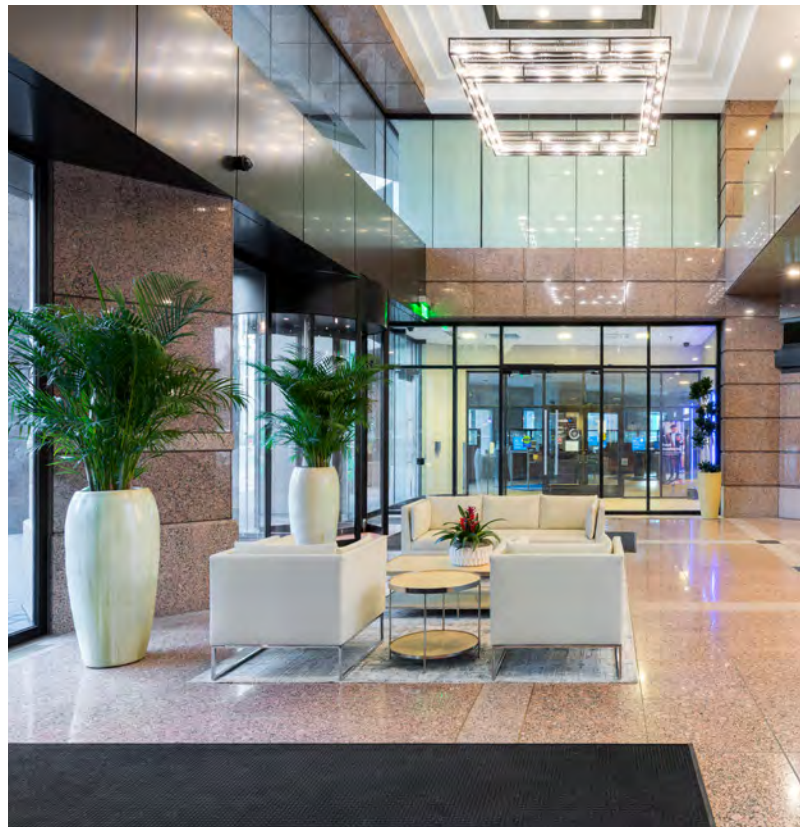
Adjacent to Plaza Marriott Hotel,
restaurants, theater

Access to TRAX in front of building

Close to Federal & State Courts

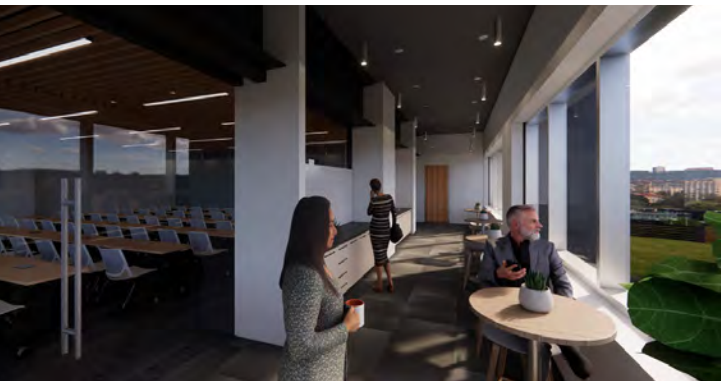
Less than 1 mile from I-15 access

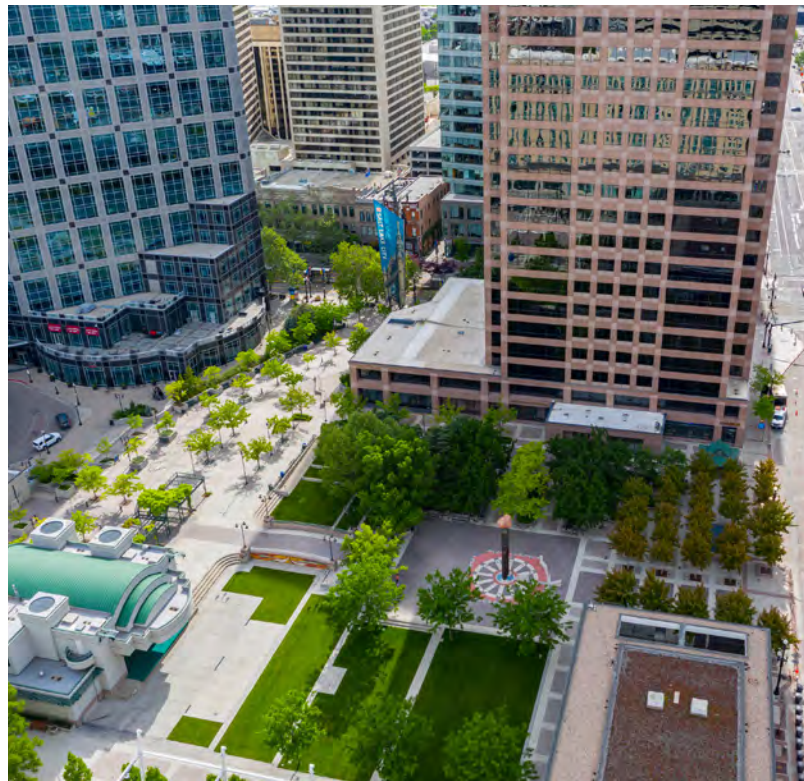
Unbeatable views of downtown and
the surrounding mountains





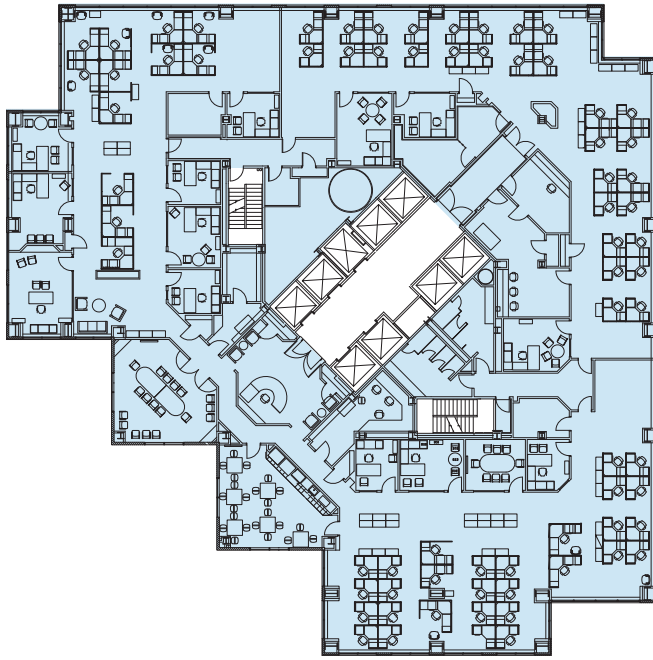
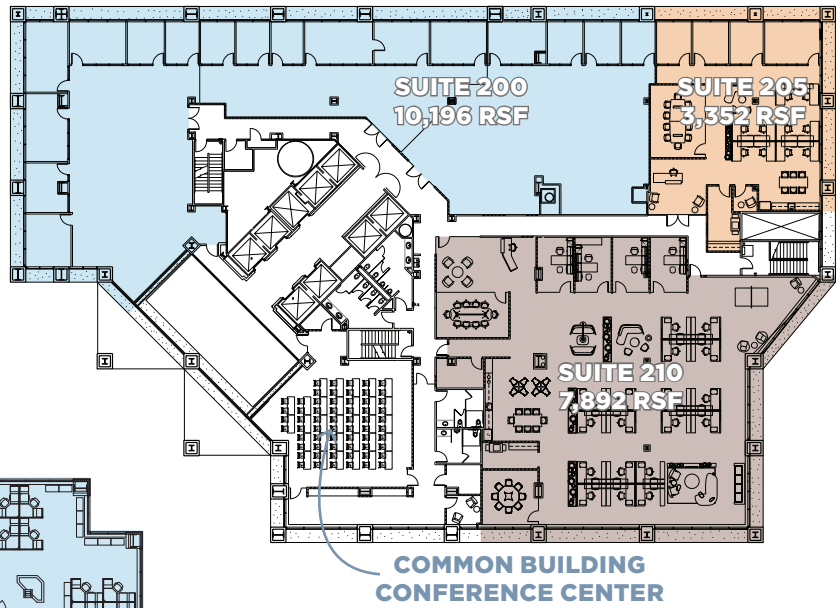
201 AMENITIES





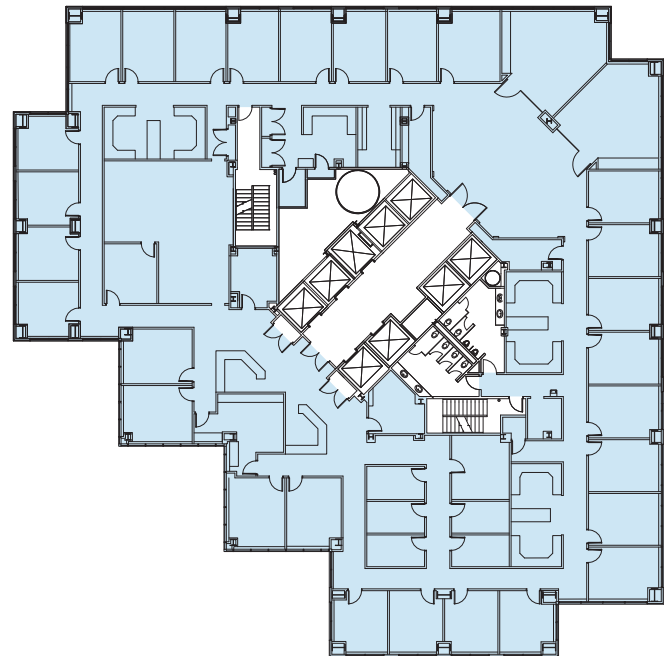
201 AVAILABILITIES

FLOOR 2



FLOOR 3

17,793 SF (FULL FLOOR)



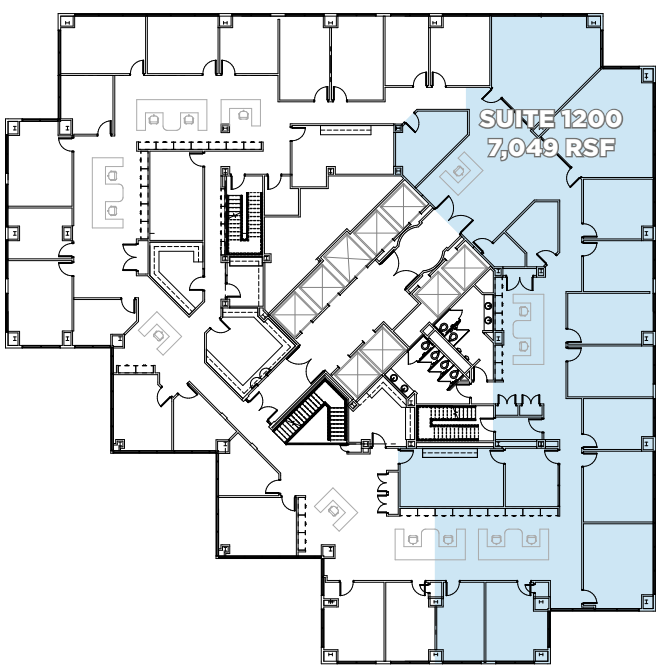
FLOOR 6

17,793 SF (FULL FLOOR)

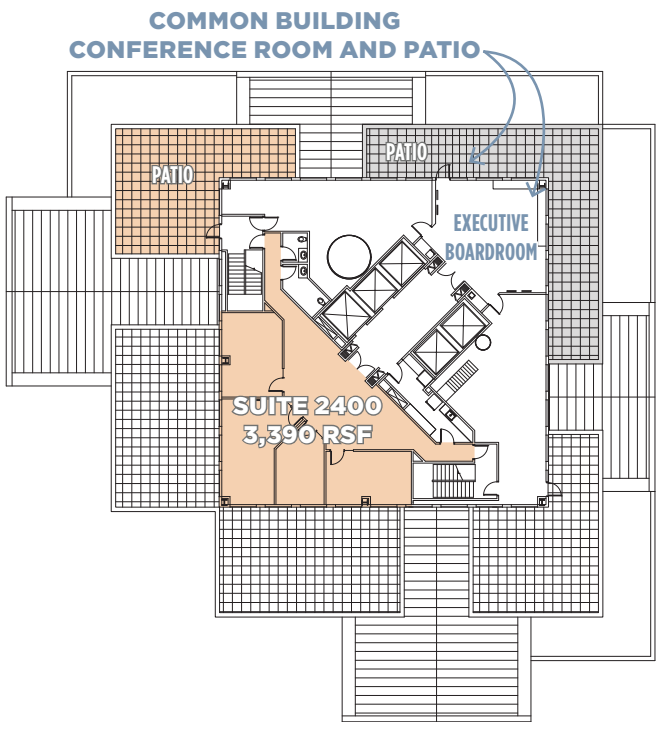




FLOOR 12



FLOOR 14



FLOOR 24



201 LOCATION





201 TOWER

NOW LEASING
201 SOUTH MAIN STREET
SALT LAKE CITY, UTAH



FOR ADDITIONAL
INFORMATION, CONTACT:

Mike Richmond

Executive Managing Director
+1 801 303 5434
mike.richmond@cushwake.com

Dana Baird, ccim

Executive Managing Director
+1 801 303 5526
dana.baird@cushwake.com



170 South Main Street Suite 1600
Salt Lake City, UT
+1 801 322 2000 cushmanwakefield.com

Cushman & Wakefield Copyright 2024. No warranty or representation, express or implied, is made to the accuracy or completeness of the information contained herein, and same is submitted subject to errors, omissions, change of price, rental or other conditions, withdrawal without notice, and to any special listing conditions imposed by the property owner(s). As applicable, we make no representation as to the condition of the property (or properties) in question. (G:\UT\SLI\Shared\Apps\Gigas\1 - Projects\Richmond, Mike\1 - Flyers\201Main)

