



**FOR
LEASE**

PLAZA WEST

**107 PLAZA DR, STE I-J
ST. CLAIRSVILLE, OH**



**HARVEY
GOODMAN**

Broker, John Sambuco





**HARVEY
GOODMAN**

Broker, John Sambuco



Executive Summary



Plaza West stands as St. Clairsville's modern business district, strategically located just half a mile from I-70 off Exit 215. This vibrant center features a mix of retail, medical, financial, and dining establishments, anchored by a major locally-owned supermarket. The area boasts a population of approximately 16,300 within a 5-mile radius, a median household income around \$69,500, and high visibility with approximately 11,000 vehicles passing daily on Route 40. Plaza West offers an ideal location for businesses seeking a dynamic and accessible environment in St. Clairsville.



**HARVEY
GOODMAN**

Broker, John Sambuco

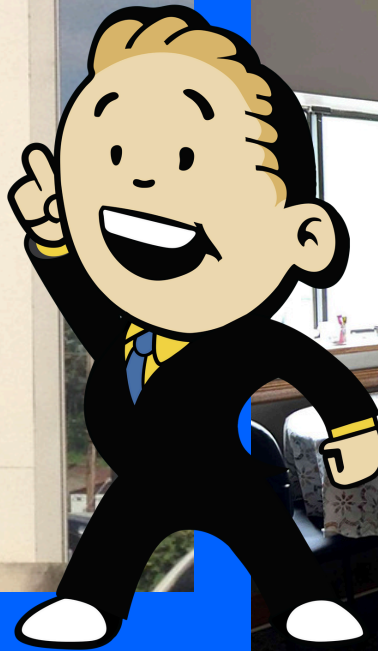
Property Highlights



- Available Space - 2,500 SF
- Will build to suit
- Abundant Parking Spaces
- Traffic Count on Route 40 - 11,000
- Average HH Income - \$69,500
- Population in 5 miles - 16,300

**FOR LEASE
\$3,333/mo.**

PHOTOS

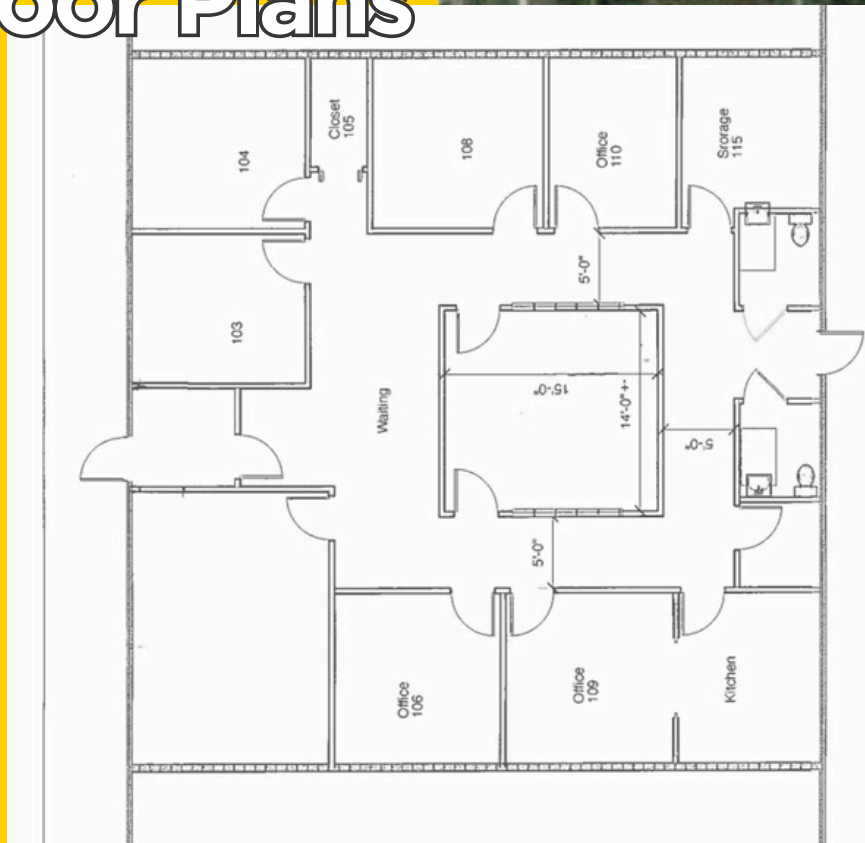


**HARVEY
GOODMAN**

Broker, John Sambuco



Aerial Map & Floor Plans



**HARVEY
GOODMAN**

Broker, John Sambuco



**HARVEY
GOODMAN**

Broker, John Sambuco

**THANK
YOU!**



STEUBENVILLE, OH OFFICE
2700 Sunset Blvd
Steubenville, Ohio 43952
740-264-0300

ST CLAIRSVILLE, OH OFFICE
250 W. Main St
St. Clairsville, Ohio 43950
740-695-3131

MARTINS FERRY, OH OFFICE
410 Walnut St
Martin Ferry, OH 43935
740-633-6363

WEIRTON, WV OFFICE
253 Three Springs Dr
Weirton, WV 26062
304-723-3131

WHEELING, WV, OH OFFICE
980 R National Rd
Wheeling, WV 26003
304-233-4451

BARNESVILLE, OH OFFICE
820 Bond Ave
Barnesville, Ohio 43713
740-425-3535

JAY GOODMAN, CCIM
O (740) 695-3131, C (773) 936-6511
jayg@goodmanrealtor.com



The information contained in the following Marketing Package is proprietary and strictly confidential. It is intended to be reviewed only by the party receiving it from Harvey Goodman and should not be made available to any other person or entity without the written consent of Harvey Goodman Realtor.

The information in this market package has been secured by sources deemed to be reliable. Harvey Goodman Realtor makes no representations or warranties expressed or implied as to the accuracy of this information. References to square footage or age are approximate. Purchaser must verify the accuracy of the information and bears all risks for any inaccuracies. Information is subject to verification and no liability for errors or omissions are assumed.