

**Rexford Industrial Center
Business Park Setting
Outstanding Industry Location
Institutionally Managed Park**



INDUSTRIAL SPACE FOR LEASE

VALLEY BUSINESS PARK

Industrial Units from +/- 2,760 SF to +/- 3,162 SF

La Puente , CA





PROPERTY HIGHLIGHTS

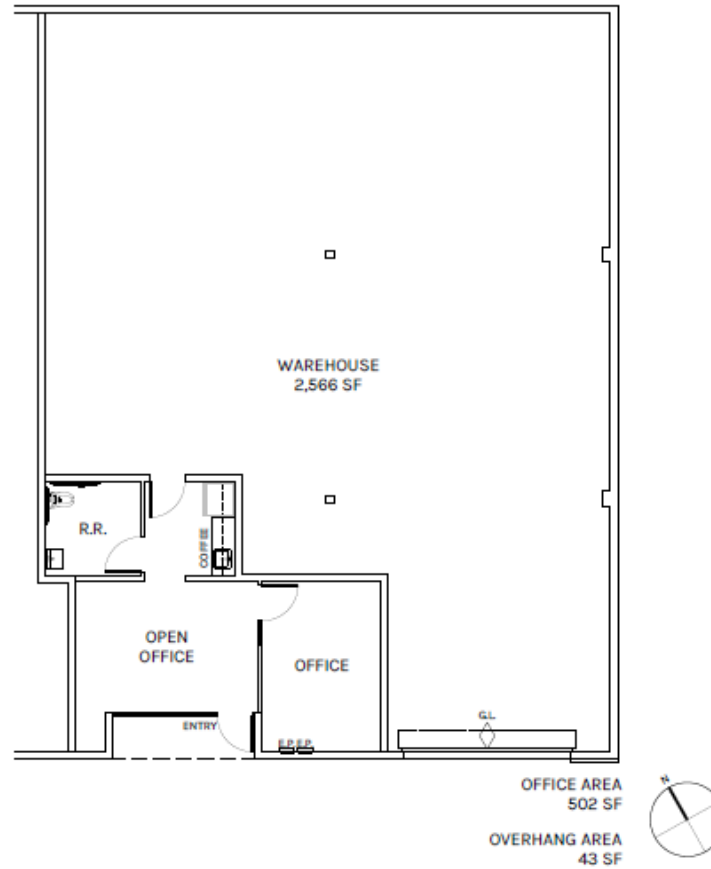
- Modern Industrial Units
- Secured Business Park
- Outstanding Industry Area Location
- Excellent Feng Shui
- Access to (605) & (60) Freeways
- Well-Maintained Business Park
- Ground Level Loading
- Large Truck Court

Available Unit	SF	Office SF
14266 Valley Blvd, Unit E	+/-3,162	527
14270 Valley Blvd, Unit E	+/-3,111	502
14278 Valley Blvd, Unit D	+/-2,904	1,030
14274 Valley Blvd, Unit C	+/-2,760	552



**14270 Valley Boulevard, Unit E
La Puente**

OVERALL FLOOR PLAN
3,111 SF

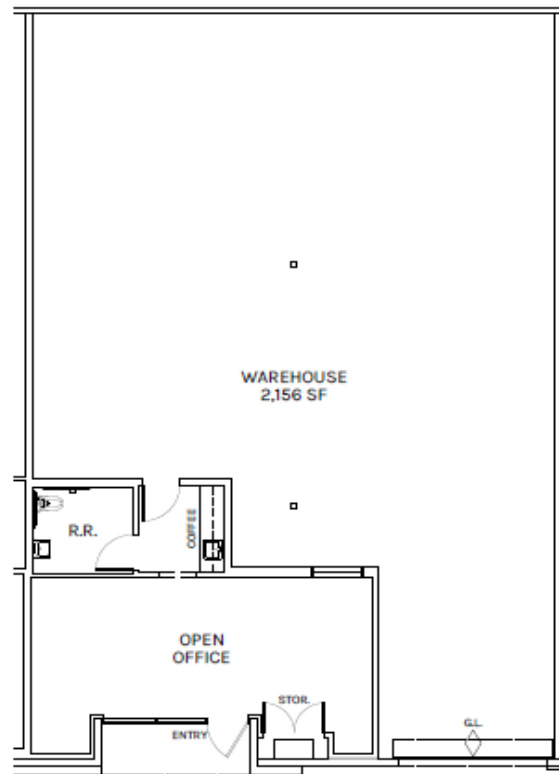


PLAN LAYOUT SUBJECT TO FIELD CONDITIONS AND MAY DEFER FROM PLAN AS SHOWN. ALL INFORMATION PRESENTED ON THIS DRAWING IS PRESUMED TO BE ACCURATE, HOWEVER TENANT SHOULD VERIFY PERTINENT INFORMATION PRIOR TO COMMITTING TO A LEASE. ANY FURNITURE OR APPLIANCES SHOWN ON PLAN ARE FOR CONCEPT ONLY AND WILL BE TENANT PROVIDED.



**14274 Valley Boulevard, Unit C
La Puente**

OVERALL FLOOR PLAN
2,760 SF



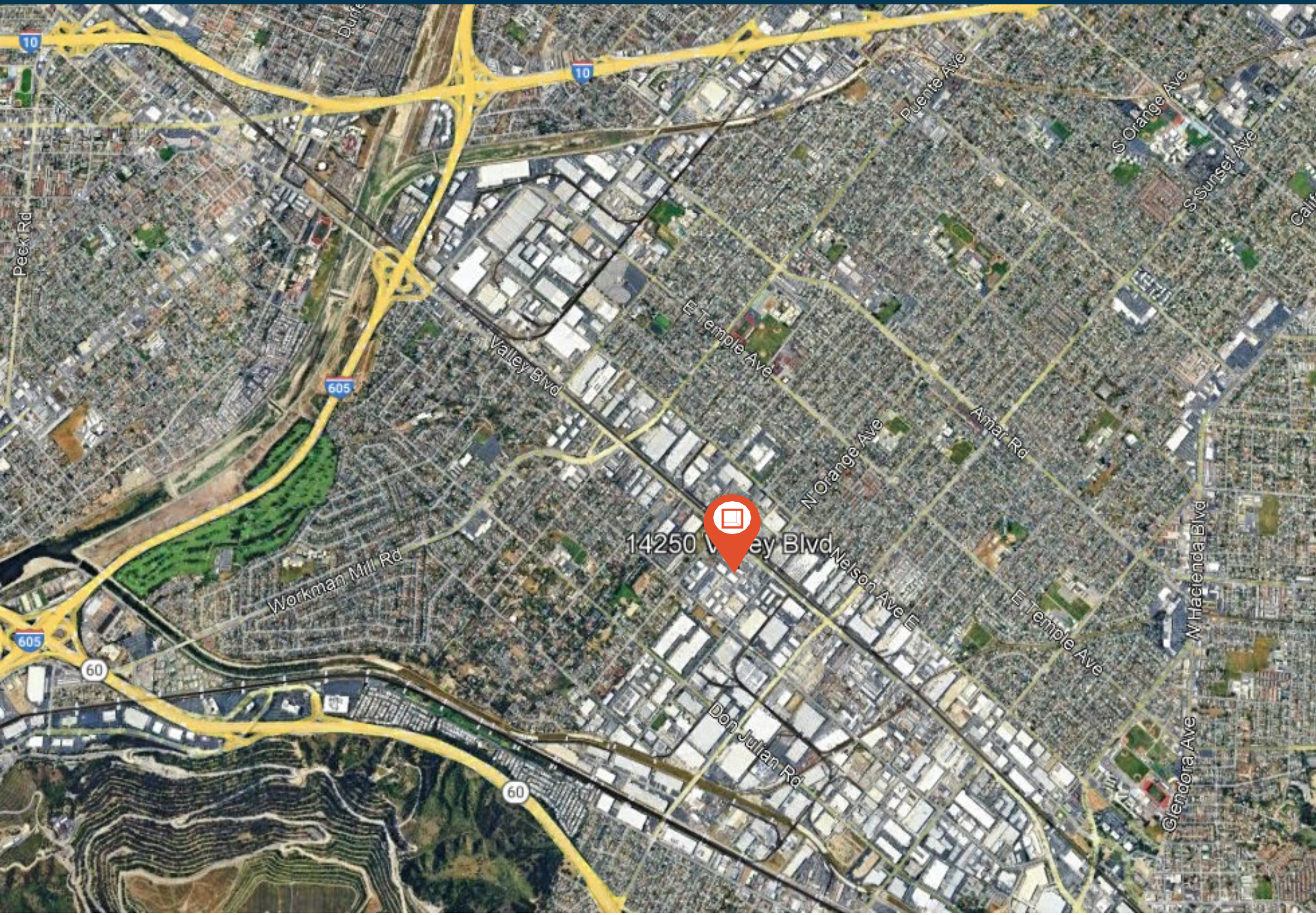
OFFICE
AREA
552 SF



PLAN LAYOUT SUBJECT TO FIELD CONDITIONS AND MAY DIFFER FROM PLAN AS SHOWN. ALL INFORMATION PRESENTED ON THIS DRAWING IS PRESUMED TO BE ACCURATE. HOWEVER TENANT SHOULD VERIFY ALL INFORMATION PRIOR TO COMMITTING TO A LEASE. ANY FURNITURE OR APPLIANCES SHOWN ON PLAN ARE FOR CONCEPT ONLY AND WILL BE TENANT PROVIDED.

Property Location

Valley Business Park





**Rexford
Industrial**

Leasing Contacts:

Chris Tolles

Executive Managing Director
213.955.5129
chris.tolles@cushwake.com
LIC # 01459899

Erik Larson

Executive Managing Director
213.955.5126
erik.larson@cushwake.com
LIC # 01213790

Maya Schirn

Associate
213.236.4931
maya.schirn@cushwake.com
LIC # 02237054

