

The background of the entire page is a photograph of the Kahala Office Tower. The building is a multi-story structure with a light beige facade and large, arched windows. It is situated in an urban environment with trees and a parking lot visible in the foreground. A white rectangular box is overlaid on the left side of the image, containing the text "KAHALA OFFICE TOWER".

KAHALA OFFICE TOWER

FOR SUBLEASE | 4211 Waiialae Avenue, Suite 505, Honolulu, HI 96816

Located within the Kahala Office Tower at 4211 Waiialae Avenue, Suite 505 offers a rare opportunity to secure office space in one of East Honolulu's most sought-after commercial addresses. The Kahala Office Tower is an integral part of Kahala Mall, a premier regional shopping center anchored by Whole Foods Market, Macy's and Ross Dress for Less. The building is situated in the upscale Waiialae-Kahala neighborhood, widely regarded as one of Oahu's most prestigious and affluent communities, and provides an ideal environment for professional service firms, medical practitioners, financial advisors, and other businesses seeking high-profile East Honolulu address.

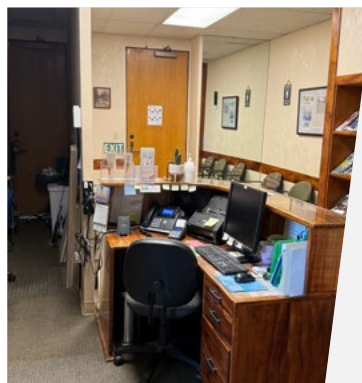
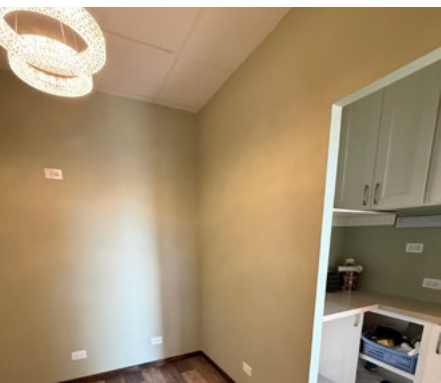
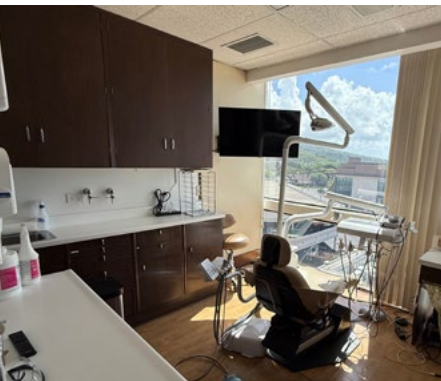
The property benefits from abundant free parking shared with Kahala Mall, direct access to the H-1 Freeway, and strong bus connectivity via multiple routes along Waiialae Avenue. Downtown Honolulu is approximately 15 minutes away by car, making this location equally accessible for clients and staff.

The building's diverse tenant mix includes medical professionals, legal services, financial institutions, and a variety of other professional service providers, creating a collaborative and established community within the tower.



FEATURES & BENEFITS

- » Fully built-out dental practice in Kahala Office Tower with corner views
- » Four operatories with space for additional operatories
- » Sterilization lab
- » Private doctors office with separate entry/exit
- » Restroom in suite with shower
- » Waiting and reception area
- » High demand market with limited supply



Area	Kahala
TMK Number	(1) 3-5-16-12
Available Space	Suite 505 (1,110 RSF)
Base Rent	Negotiable
CAM	\$2.91 PSF/Mo.
Sublease Term	Through 9/30/32

CONTACT US

Neal E. Hafner (S), CCIM, SIOR
 Vice President
 Lic# RS-72423
 +1 808 523 8313
 neal.hafner@colliers.com



220 S. King Street, Suite 1800
 Honolulu, Hawaii 96813
 808 524 2666
 colliers.com