

# THE COMMODORE BUILDING

317 Adelaide Street West

Toronto, Ontario | Suite 800 - 2,365 SF



# THE COMMODORE BUILDING

317 Adelaide Street West, Toronto, ON

The Commodore Building is a heritage landmark located in the heart of Toronto's vibrant Downtown West. All building systems have been upgraded to modern standards while maintaining the integrity of its original architectural design. There are two completely refurbished passenger elevators and two freight elevators. The building is accessible from a number of public transit routes and it is within walking distance of the University Avenue subway and Union Station. In addition there is an incredible rooftop patio with free Wi-fi.

## Featuring

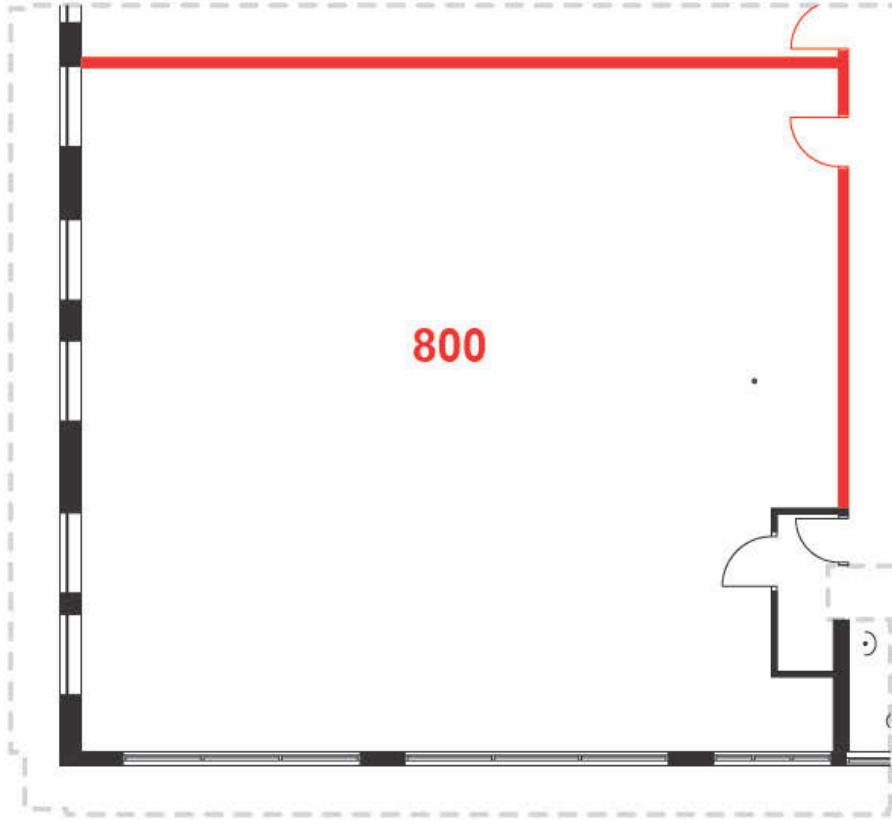
### Suite 800 - 2,365 SF

- Nicely built out corner suite with boardroom, offices, kitchen and ample open space
- Landlord will make substantial improvements to suit tenant's requirements
- High ceilings and large windows that are operable
- Hardwood floors
- Tenant-controlled heat and air conditioning
- High speed Internet
- Monthly parking available at current rates
- Dogs and bicycles are welcome



# FLOOR PLAN

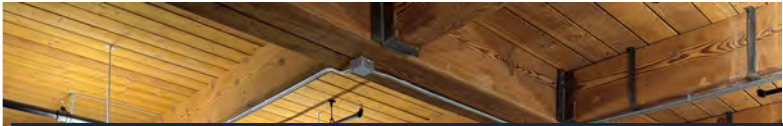
Capitol Buildings  
317 Adelaide Street West, Toronto  
Suite 800



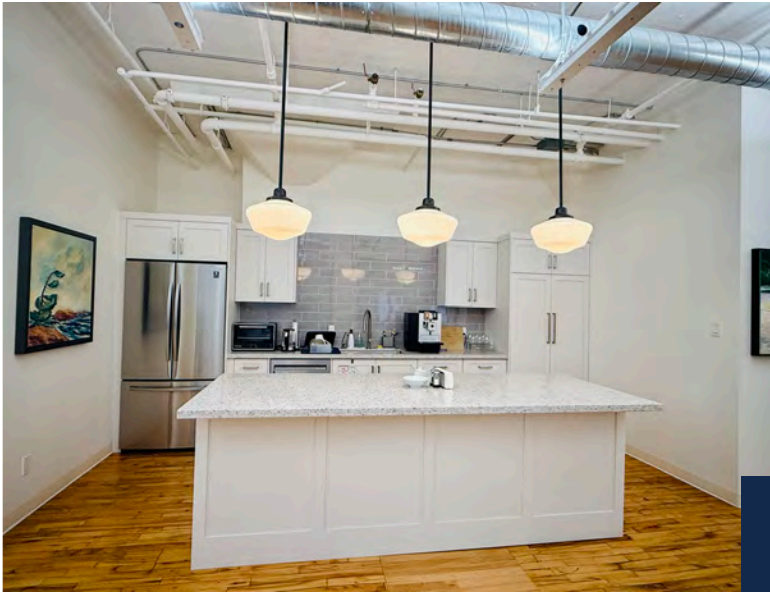
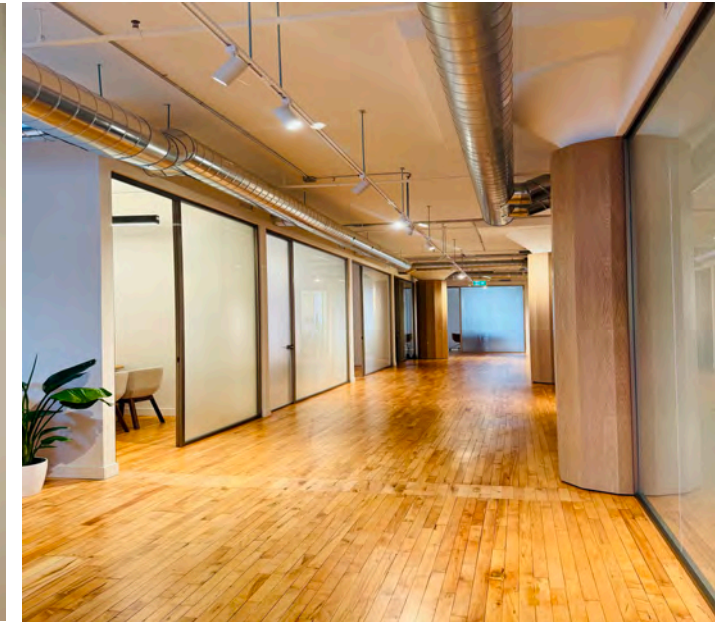
---

317 ADELAIDE STREET WEST

---



# Photos of Recently Improved Units



Rooftop patio



# THE CAPITOL BUILDING

---

317 Adelaide Street West  
Toronto, Ontario

## LEASING CONTACT:

**Harry Glicksman**  
Leasing Representative  
+1 416 930 0432  
[harry@capbuildings.com](mailto:harry@capbuildings.com)

---

**Capitol Buildings**  
317 Adelaide Street West, Suite 605  
Toronto, Ontario M5V 1R9  
tel +1 416 596 0556 x 257 | fax +1 416 596 7390  
[www.capitolbuildings.com](http://www.capitolbuildings.com)