

SUBLEASE OPPORTUNITY

**3615
WILLOWBEND BLVD
SUITE 400**

HOUSTON, TX 77054

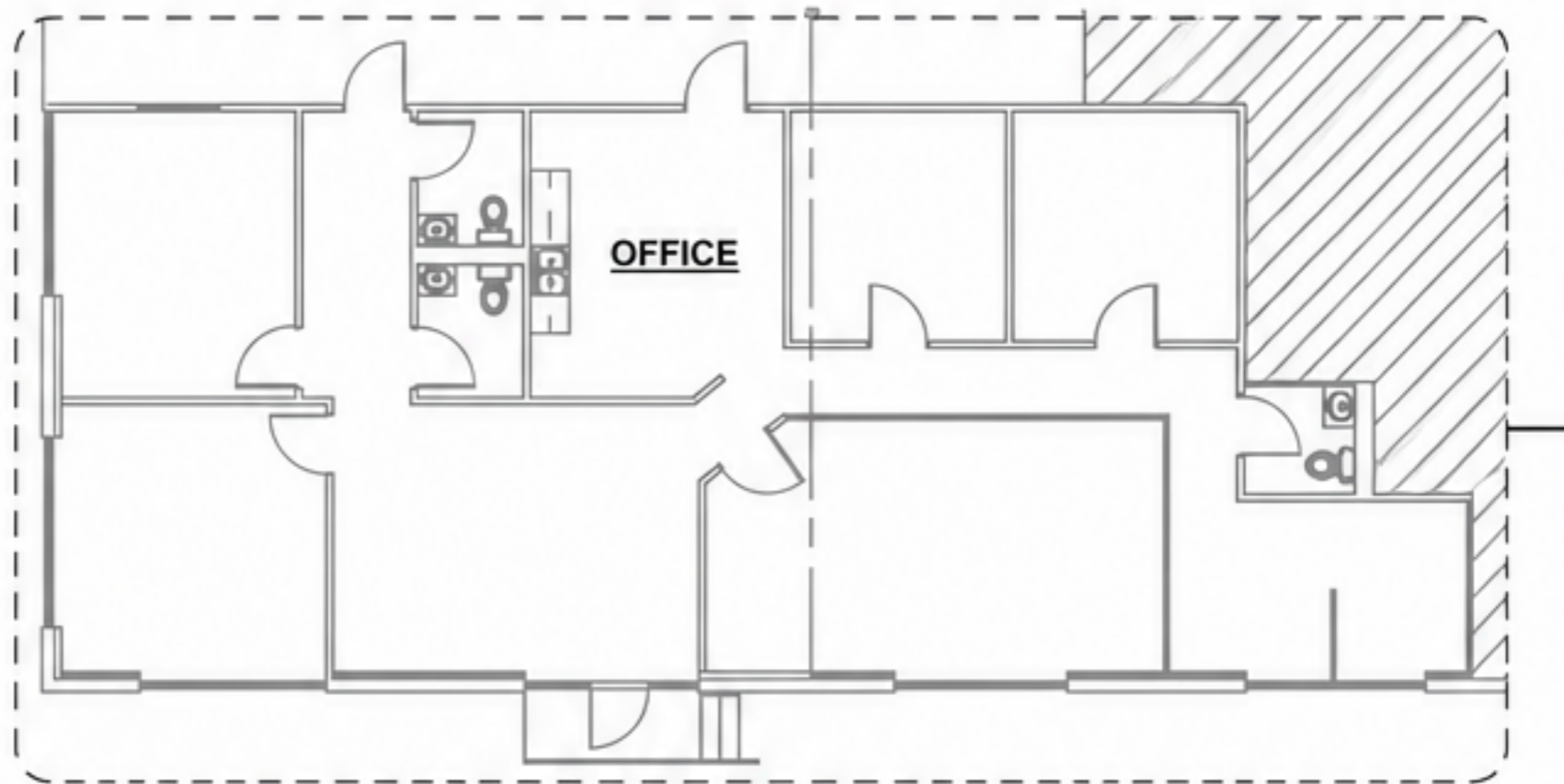
±2,000 SF
OF FUNCTIONAL OFFICE
SPACE AVAILABLE
FOR SUBLEASE



ABOUT THE SPACE

±2,000 SF of professional office space available for sublease within a 5,823 SF flex/industrial suite.

This well-designed office offers a private and efficient layout with multiple offices, an open work area, reception, restroom access, and more. Ideal for a variety of businesses seeking a convenient location in the heart of Southwest Houston.



Suite 400

SPACE HIGHLIGHTS

- ±2,000 SF office area available
- Located within a 5,823 SF flex/industrial suite
- Private office layout with multiple rooms
- Reception / entry area
- Restroom access
- Ample on-site parking
- Move-in ready condition



IDEAL USES

- Professional Services
- Construction / Admin Office
- Sales Office
- Small Business HQ
- Satellite Office
- Any Professional Office Use

PRIME LOCATION
Conveniently located in Southwest Houston with easy access to Westpark Tollway, Beltway 8, and US-59.

EXCELLENT ACCESS
Minutes from the Galleria, Medical Center, Greenway Plaza, and surrounding business hubs.

BUSINESS PARK SETTING
Well-maintained property with professional neighbors and ample on-site parking.

FOR MORE INFORMATION, CONTACT:

BRYAN AUSTIN

(832) 784-3919 | bryan@bridge-cre.com



BRIDGE
COMMERCIAL REAL ESTATE