



±10,840 SF WAREHOUSE WITH YARD ON CORNER LOT

10900 OLD GENTILLY RD NEW ORLEANS, LA 70127



OFFERED: FOR LEASE

SALE: \$435,000 LEASE: \$4,500.00/MO

±10,840 SF WAREHOUSE | ±1.99 ACRES

- 16 dock-high loading bays
- Fenced-in lot
- Zoned GPD - General Planned Development District
- NNN lease type

CONTACT:

ADRIEN FOLEY FABIAN EDWARDS, JD/DCL
504.352.3783 985.974.8301

800.895.9329 | <https://elifinrealty.com> | June 2026
640 Main St, Suite A, Baton Rouge, LA 70801

Broker of Record, Mathew Laborde; Licensed by the Louisiana, Mississippi, and Ohio Real Estate Commissions. This information has been secured from sources we believe to be reliable, but we make no representations or warranties, expressed or implied, as to the accuracy of the information. References to square footage or age are approximate. Interested parties must verify the information and bears all risk for any inaccuracies.

OFFERING SUMMARY



PROPERTY SUMMARY

- Now available for sale and lease, 10900 Old Gentilly Rd offers a ±10,840 SF warehouse situated on a ±1.99-acre lot in New Orleans, LA.
- The property features 16 dock-high loading bays and a fenced-in laydown yard, providing excellent functionality for logistics and distribution.
- Located on a corner lot with frontage along Old Gentilly Rd, the site offers strong visibility and access.
- Zoned GPD for General Planned Development District.
- NNN lease type.

CONTACT:

ADRIEN FOLEY FABIAN EDWARDS, JD/DCL
504.352.3783 985.974.8301

AERIAL PHOTOS



CONTACT:

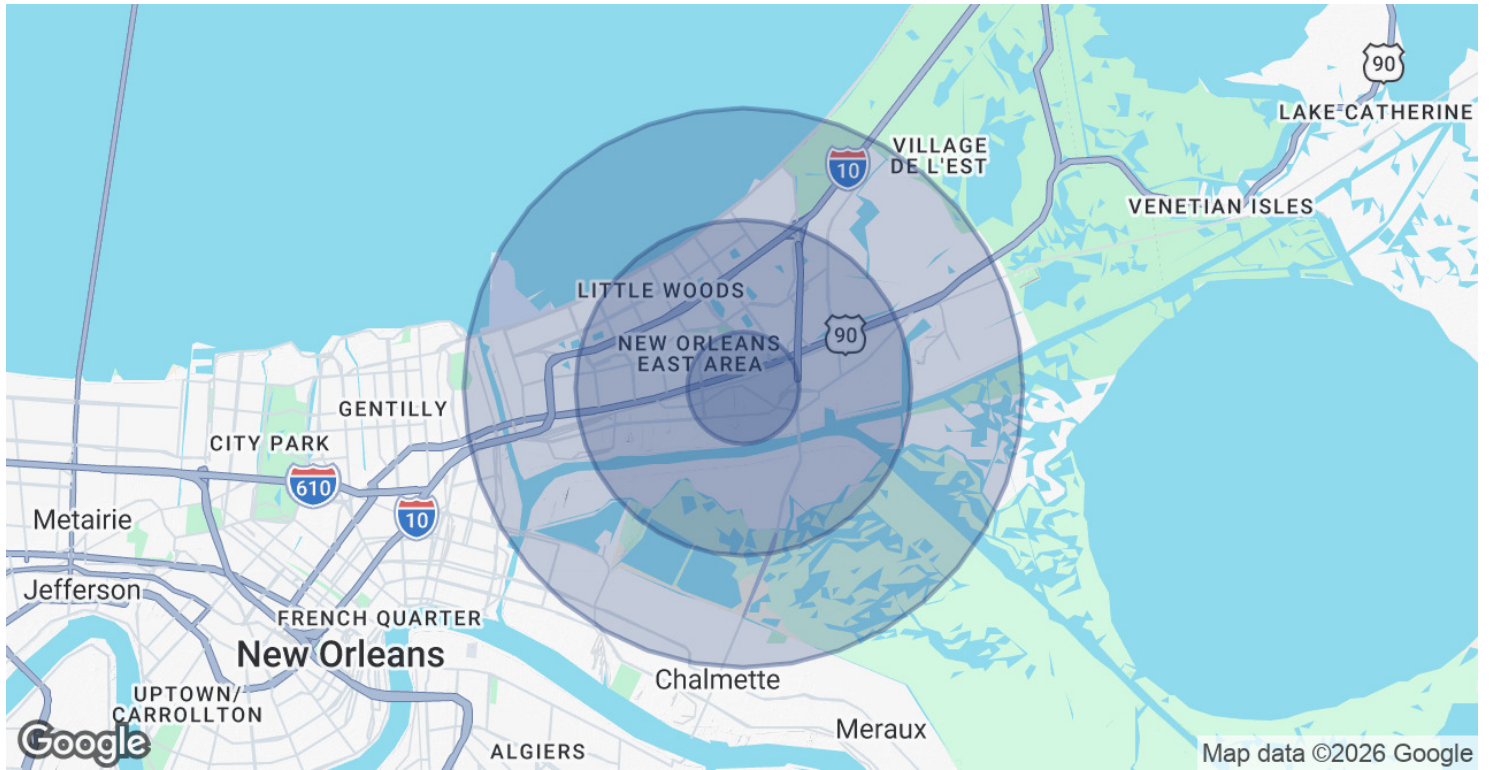
ADRIEN FOLEY FABIAN EDWARDS, JD/DCL
504.352.3783 985.974.8301

800.895.9329 | <https://elifinrealty.com> | June 2026

640 Main St, Suite A, Baton Rouge, LA 70801

Broker of Record, Mathew Laborde; Licensed by the Louisiana, Mississippi, and Ohio Real Estate Commissions. This information has been secured from sources we believe to be reliable, but we make no representations or warranties, expressed or implied, as to the accuracy of the information. References to square footage or age are approximate. Interested parties must verify the information and bears all risk for any inaccuracies.

DEMOGRAPHICS MAP & REPORT



POPULATION	1 MILE	3 MILES	5 MILES
Total Population	4,724	50,242	88,832
Average Age	40	38	37
Average Age (Male)	38	36	36
Average Age (Female)	42	39	39

HOUSEHOLDS & INCOME	1 MILE	3 MILES	5 MILES
Total Households	1,713	18,813	32,955
# of Persons per HH	2.8	2.7	2.7
Average HH Income	\$63,909	\$58,724	\$57,071
Average House Value	\$228,298	\$231,024	\$226,391

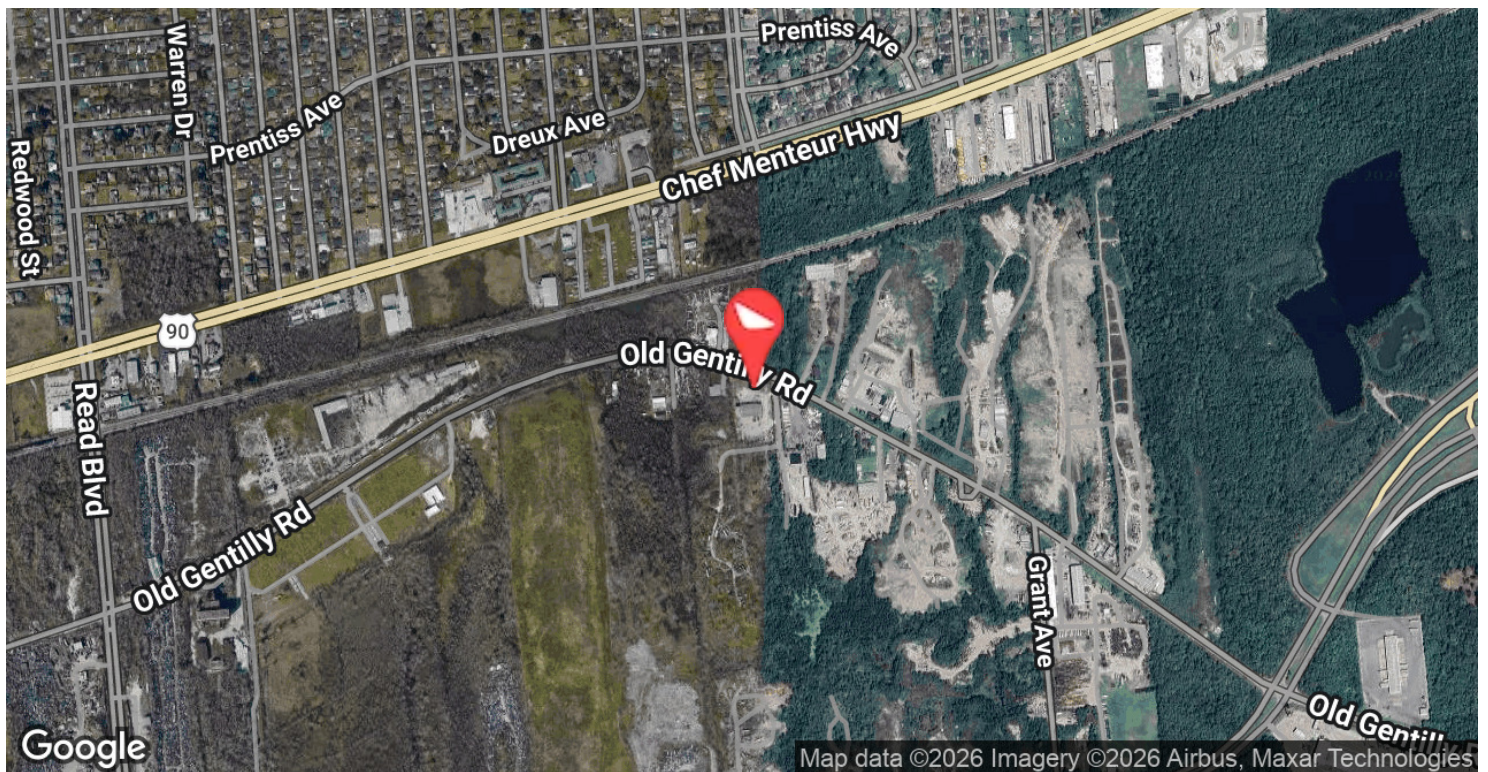
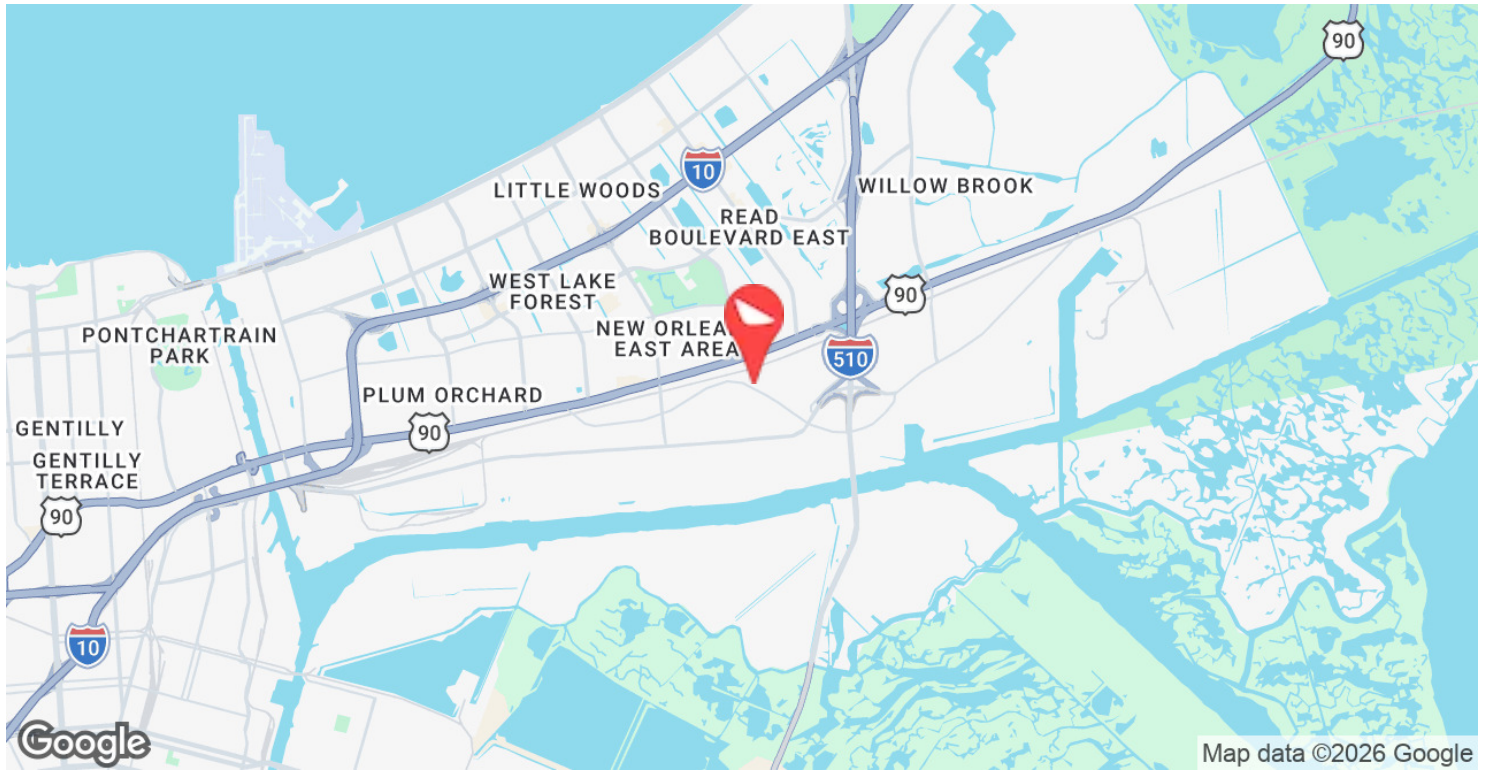
2020 American Community Survey (ACS)

CONTACT:

ADRIEN FOLEY FABIAN EDWARDS, JD/DCL
 504.352.3783 985.974.8301

800.895.9329 | <https://elifinrealty.com> | June 2026
 640 Main St, Suite A, Baton Rouge, LA 70801
 Broker of Record, Mathew Laborde; Licensed by the Louisiana, Mississippi, and Ohio Real Estate Commissions. This information has been secured from sources we believe to be reliable, but we make no representations or warranties, expressed or implied, as to the accuracy of the information. References to square footage or age are approximate. Interested parties must verify the information and bears all risk for any inaccuracies.

LOCATION MAPS



CONTACT:

ADRIEN FOLEY FABIAN EDWARDS, JD/DCL
504.352.3783 985.974.8301

800.895.9329 | <https://elifinrealty.com> | June 2026

640 Main St, Suite A, Baton Rouge, LA 70801

Broker of Record, Mathew Laborde; Licensed by the Louisiana, Mississippi, and Ohio Real Estate Commissions. This information has been secured from sources we believe to be reliable, but we make no representations or warranties, expressed or implied, as to the accuracy of the information. References to square footage or age are approximate. Interested parties must verify the information and bears all risk for any inaccuracies.