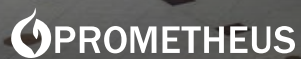


Great Ideas Thrive in Prime Locations

±48,200 SQUARE FEET CLASS A+ OFFICE SPACE
DIVISIBLE DOWN TO ±2,000 SQUARE FEET

650 CASTRO ST.

MOUNTAIN VIEW CITY CENTER





650 CASTRO WELCOME

Located on Castro Street in the heart of Mountain View's pedestrian-oriented downtown and its plethora of amenities including: dining options from an array of cultures, specialty shops, bookstores, coffeehouses and the Mountain View Center for Performing Arts.

650 Castro is walking distance from the Caltrain station's bullet stop at Downtown Mountain View Station, an intermodal transit station that serves as a stop for CalTrain (local and Baby Bullet Service), VTA light rail and numerous bus lines. The property enjoys convenient access to Highways 101, 237, 85 and 280.



Prometheus Real Estate Group manages over 1 million square feet of premium commercial, retail and office space across more than 25 properties, creating dynamic environments that inspire productivity and foster community. Our commitment to thoughtful design and exceptional service extends beyond residential neighborhoods, offering businesses a place to thrive within the heart of vibrant communities. We blend functionality with aesthetic appeal to deliver spaces that are as innovative as the companies they house.

Click [here](#) for more information.

PROPERTY HIGHLIGHTS

Located in the heart of Downtown, Mountain View City Center is miles ahead of other office buildings in this market when it comes to features and perks. Boasting plentiful parking for both tenants and guests, and planned renovations to include a new lobby design and a fitness center, this property has a full slate of amenities both on site and close by.

±48,200 SF
of Class A office
space on 3 floors

Outdoor patio
space on every level

On-site retail
includes a dry cleaner
and a UPS Store

Expansive floor plates
allow for growth

Proximity
to both Caltrain and
Light Rail

Nearby Eagle Park
has a swimming pool, green space,
kids' area and an off-leash dog run

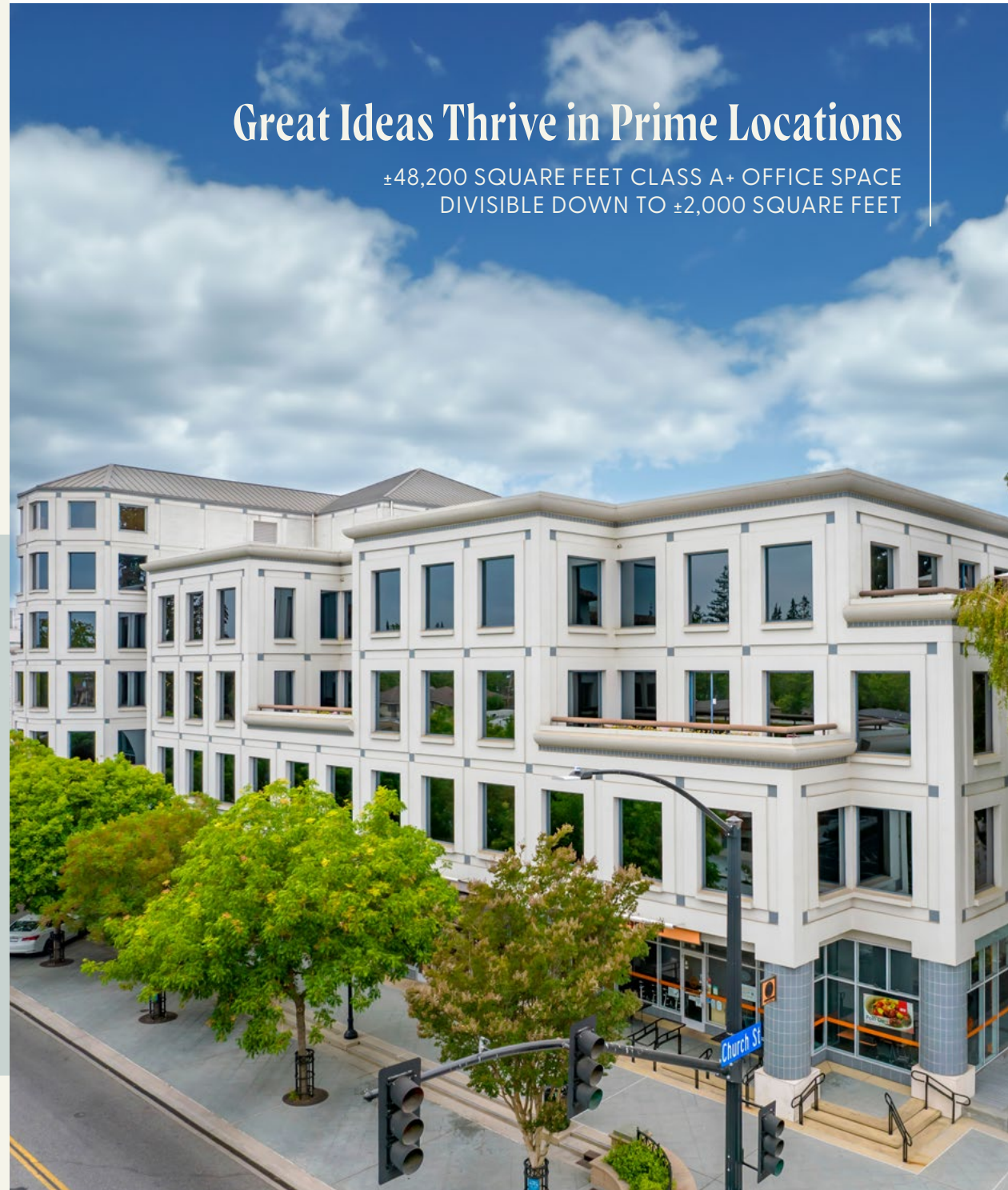
Courtyard with Starbucks
for collaborative coffee breaks

On-site eateries
include Le Boulanger, 1 Oz Coffee
and Mediterranean Grill House

Secured underground parking
3 parking spaces per 1,000 SF

Great Ideas Thrive in Prime Locations

±48,200 SQUARE FEET CLASS A+ OFFICE SPACE
DIVISIBLE DOWN TO ±2,000 SQUARE FEET



4 Floors of Class A+ Office Space

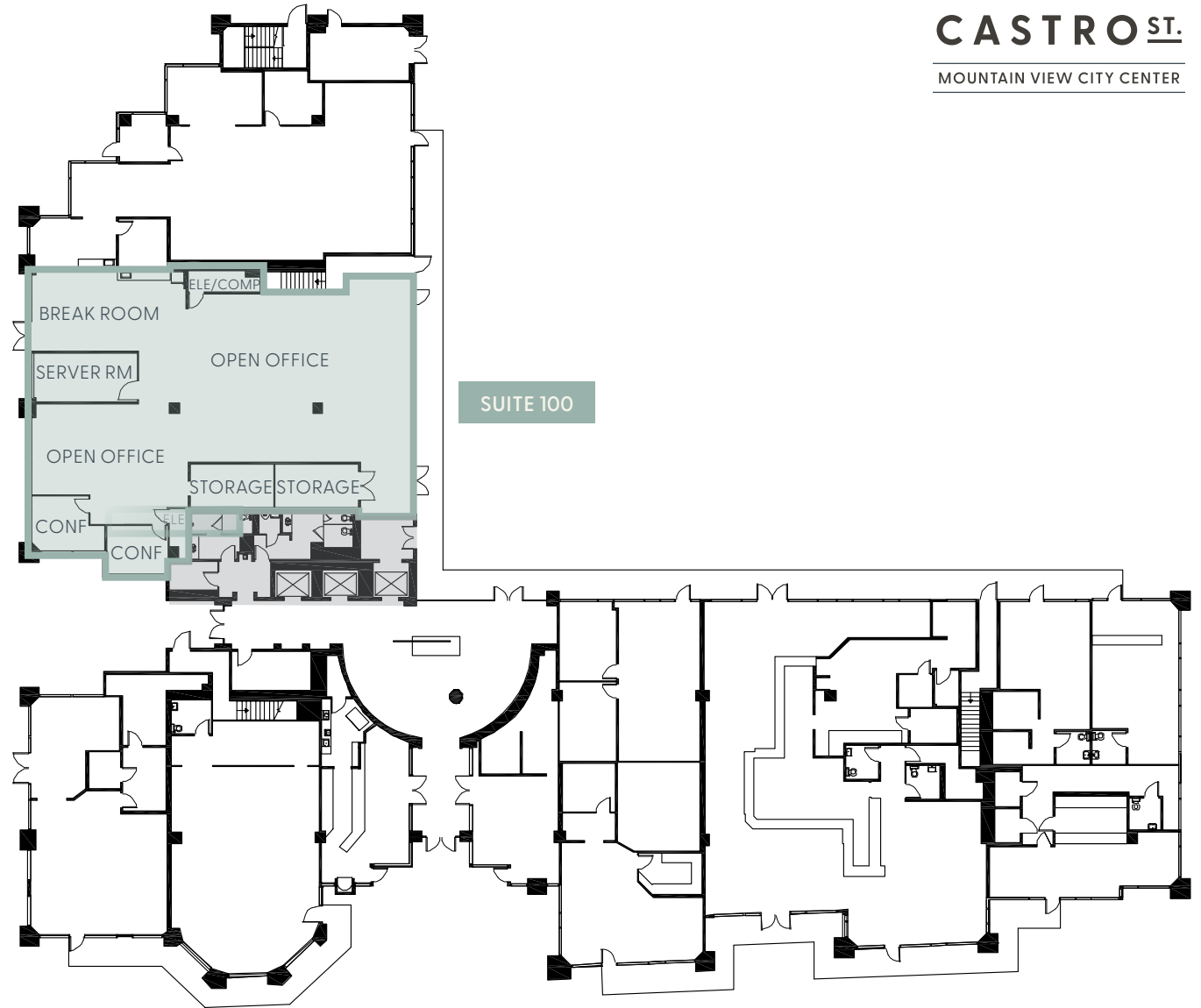
650
CASTRO ST.
MOUNTAIN VIEW CITY CENTER



FLOOR PLAN 1ST FLOOR

Suite 100 ±4,909 SF

650
CASTRO ST.
MOUNTAIN VIEW CITY CENTER



FLOOR PLAN 2ND FLOOR

Suite 200	±13,258 SF
<i>Divisible down to 2,000 SF</i>	
Suite 260	±17,879 SF
Total	±31,137 SF

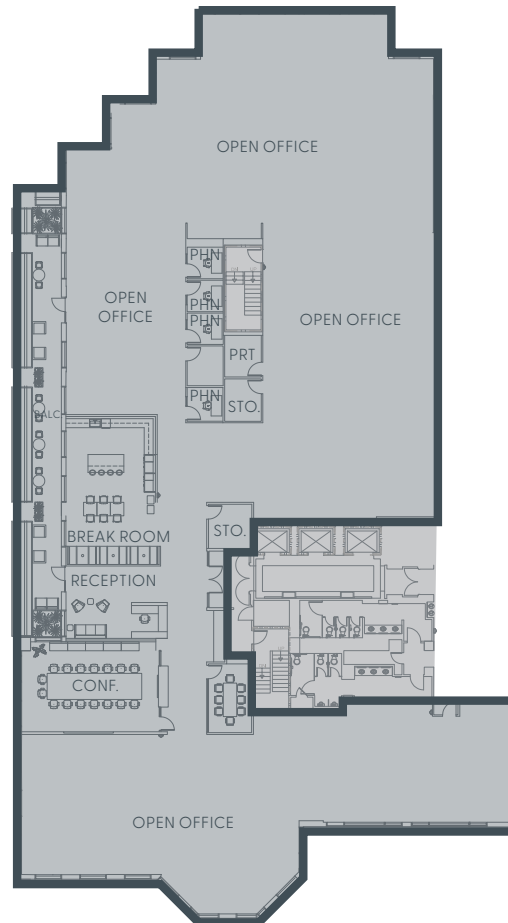
650
CASTRO ST.
MOUNTAIN VIEW CITY CENTER



SUITE 260

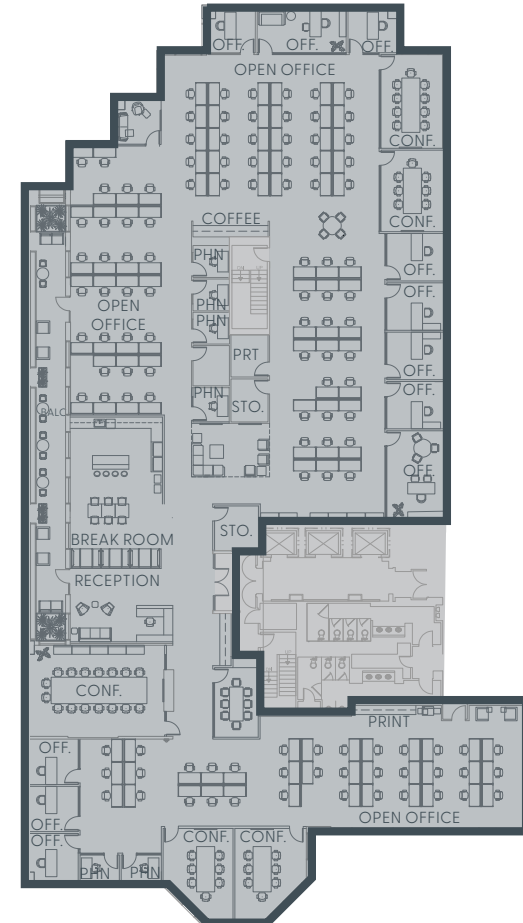
Suite 260 ±17,879 SF

CURRENT PLAN



SUITE 260

MARKET READY PLAN

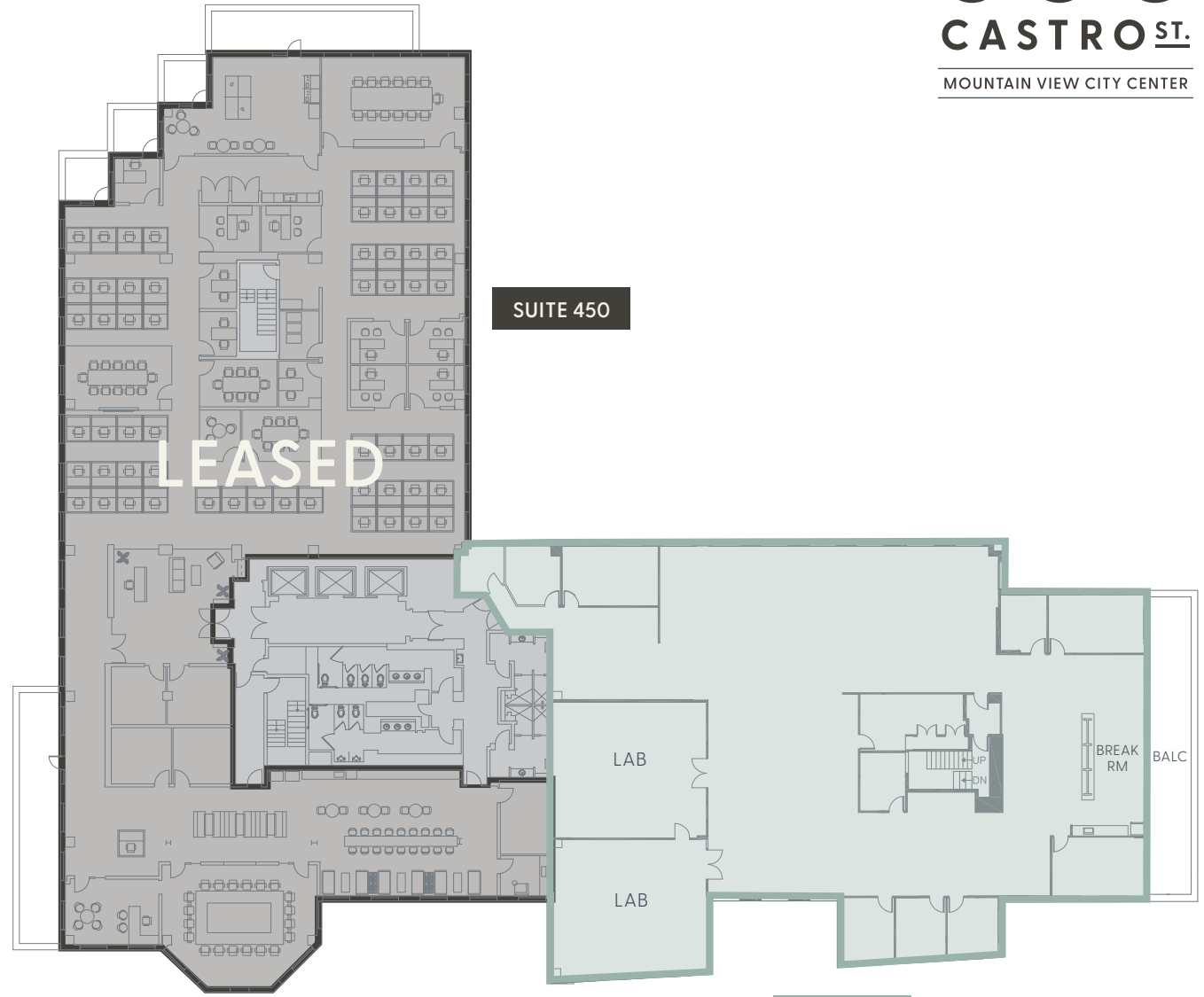


SUITE 260

FLOOR PLAN
4TH FLOOR

Suite 400 ±12,154 SF
Suite 450 LEASED

650
CASTRO ST.
MOUNTAIN VIEW CITY CENTER



SUITE 400

SUITE 450

LEASED





Renovated Lobby



Renovated Lobby



New Lockers & Showers



New Gym On-site

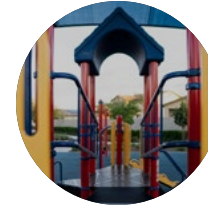
NEARBY AMENITIES

Eagle Park

Named after the mascot of the high school that once stood here, Eagle Park is like a big, amenity-filled backyard for tenants of 650 Castro. Located just steps from the building, the park has a number of amenities for visitors.



A large, lush green field is ideal for an impromptu soccer game, an after-work yoga session or just a nice, sunny walk at lunchtime.



A play area with slides, seesaws and swings is a perfect place for kids to expend some energy.



Large trees provide a shade canopy, and a variety of seating offers plenty of space to relax, read a book or just watch the world go by.



A leash-free dog area let's Fido run around with some canine buddies.



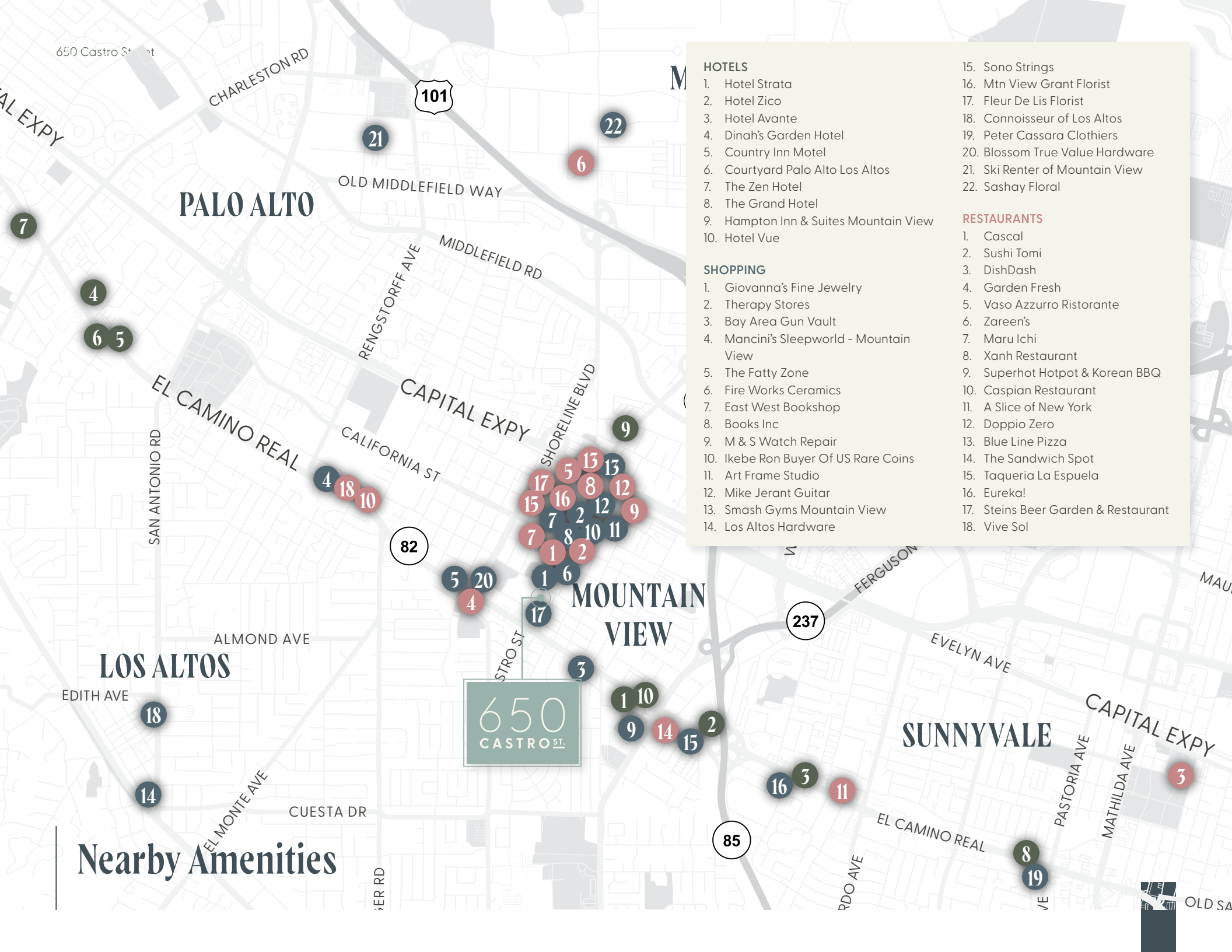
With the restaurant options available at 650 Castro, it's easy to grab some take-out and head to the park, where picnic tables provide the perfect spot for an al fresco meal.



There's an Olympic-size swimming pool where a program offers lap swim appointments and drop-in availability. A small changing area is on site.



There's an Olympic-size swimming pool where a program offers lap swim appointments and drop-in availability. A small changing area is on site.



HOTELS

- 1. Hotel Strata
- 2. Hotel Zico
- 3. Hotel Avante
- 4. Dinah's Garden Hotel
- 5. Country Inn Motel
- 6. Courtyard Palo Alto Los Altos
- 7. The Zen Hotel
- 8. The Grand Hotel
- 9. Hampton Inn & Suites Mountain View
- 10. Hotel Vue

SHOPPING

- 1. Giovanna's Fine Jewelry
- 2. Therapy Stores
- 3. Bay Area Gun Vault
- 4. Mancini's Sleepworld - Mountain View
- 5. The Fatty Zone
- 6. Fire Works Ceramics
- 7. East West Bookshop
- 8. Books Inc
- 9. M & S Watch Repair
- 10. Ikebe Ron Buyer Of US Rare Coins
- 11. Art Frame Studio
- 12. Mike Jerant Guitar
- 13. Smash Gyms Mountain View
- 14. Los Altos Hardware

RESTAURANTS

- 1. Cascal
- 2. Sushi Tomi
- 3. DishDash
- 4. Garden Fresh
- 5. Vaso Azzurro Ristorante
- 6. Zareen's
- 7. Maru Ichi
- 8. Xanh Restaurant
- 9. Superhot Hotpot & Korean BBQ
- 10. Caspian Restaurant
- 11. A Slice of New York
- 12. Doppio Zero
- 13. Blue Line Pizza
- 14. The Sandwich Spot
- 15. Taqueria La Espuela
- 16. Eureka!
- 17. Steins Beer Garden & Restaurant
- 18. Vive Sol

650
CASTRO ST.


Nearby Amenities

 Caltrain Route & Stops



650
CASTRO ST.

Connectivity



650
CASTRO ST.
MOUNTAIN VIEW CITY CENTER

For More Information, Please Contact:

DAVID HIEBERT

Vice Chairman
+1 650 320 0250
david.hiebert@cushwake.com
Lic. 01189320

DAN PERSYN

Executive Managing Director
+1 650 320 0255
dan.persyn@cushwake.com
Lic. 01184798

SOFIA LUNDELL

Director
+1 650 320 0220
sofia.lundell@cushwake.com
Lic. 02201946

