

# SOUTH SOUND



MEDICAL PORTFOLIO

## St. Clare Medical Pavilion

### FOR LEASE

CLASS A OUTPATIENT MEDICAL SPACE  
ON THE ST. CLARE HOSPITAL CAMPUS

11311 Bridgeport Way SW | Lakewood, WA

1,267 - 2,449 RSF AVAILABLE

Healthpeak

DOC  
LISTED  
NYSE

CBRE

Virginia Mason  
Franciscan Health  
St. Clare  
Medical Pavilion

# PROPERTY HIGHLIGHTS

1,267 - 2,449 RSF AVAILABLE

- Affiliated with Virginia Mason Franciscan Health
- On-Campus Class A Medical Outpatient Building
- Abundant On-Site Free Parking
- On-Site Professional Property Management
- Diverse Mix of Synergetic Medical Tenants



## AVAILABILITIES

- Suite 201: 1,587 RSF
- Suite 202: 1,267 RSF (2,449 RSF Contiguous with Suite 204)
- Suite 204: 1,182 RSF (2,449 RSF Contiguous with Suite 202)
- Suite 302: 1,443 RSF (3,196 RSF Contiguous with Suite 303)
- Suite 303: 1,753 RSF (3,196 RSF Contiguous with Suite 302)



# LOCATION

## AMENITIES & ACCESS

---





St. Clare Medical Pavilion

HOSPITAL CAMPUS



PATIENT DROP-OFF AREA



BUILDING LOBBY



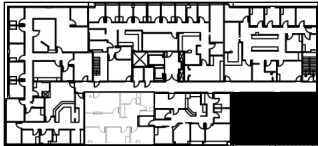
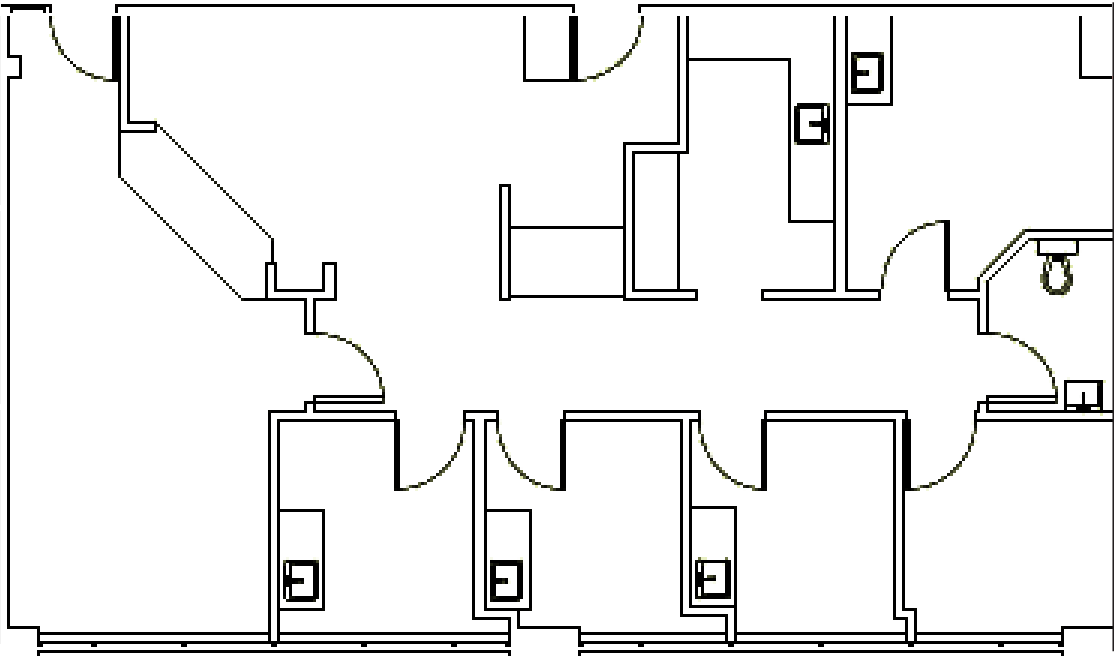
ON-SITE FREE PARKING

# SUITE 201

1,587 RSF



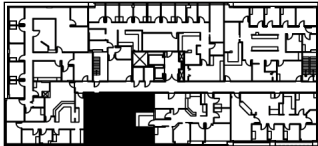
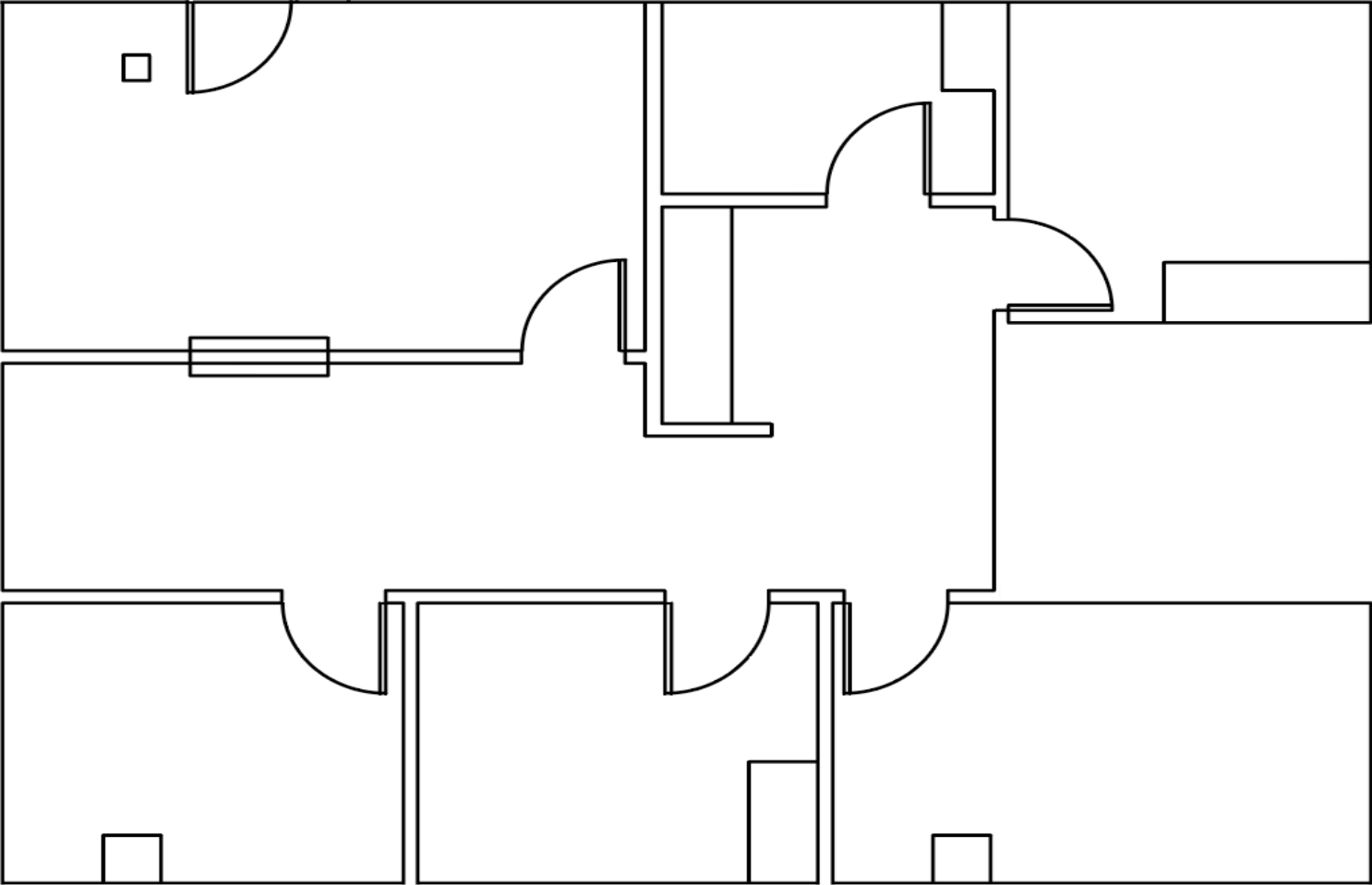
11311 Bridgeport Way SW | Lakewood, WA



# SUITE 202

1,267 RSF (2,449 RSF Contiguous with Suite 204)

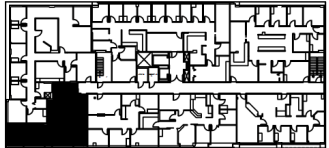
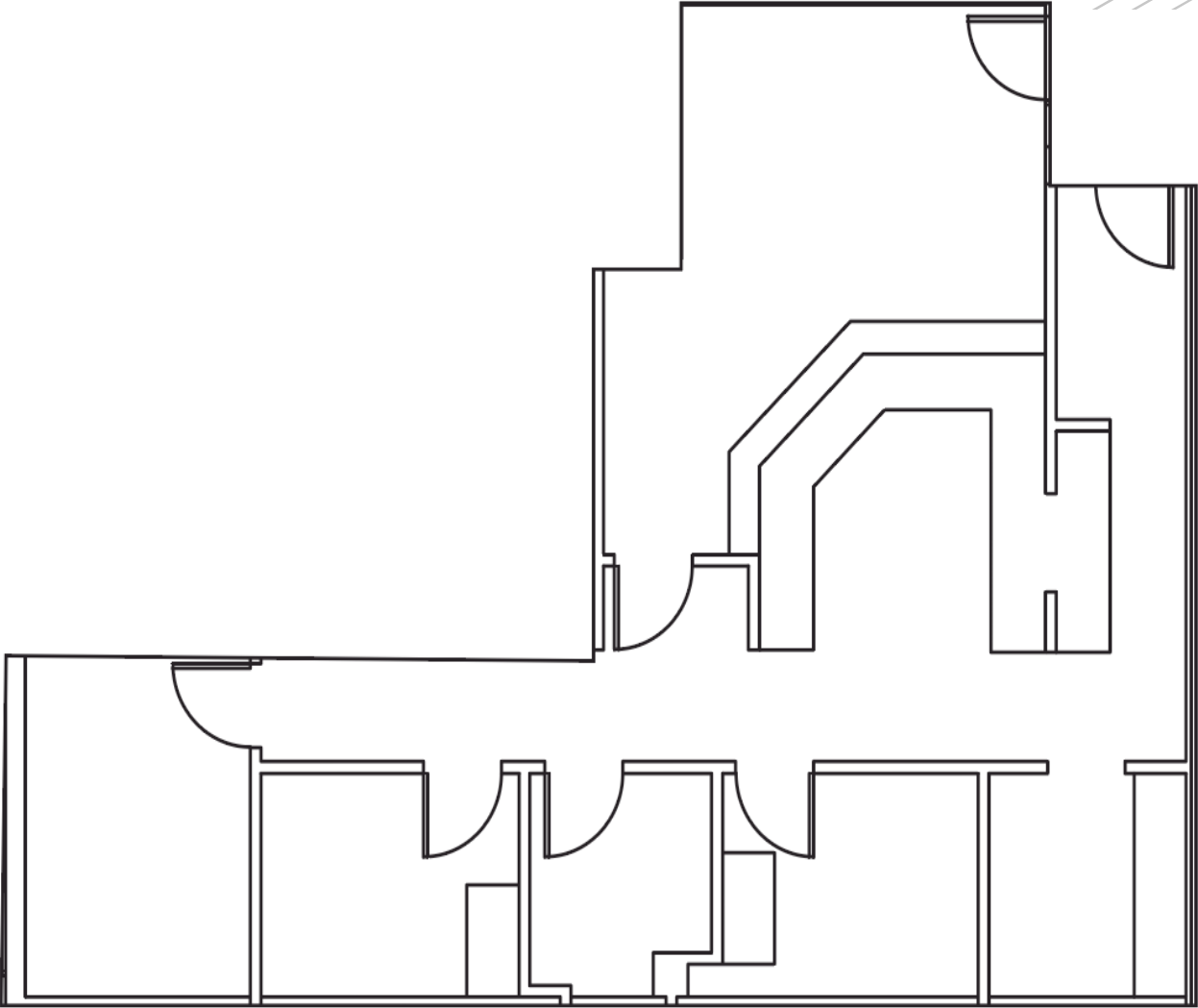
11311 Bridgeport Way SW | Lakewood, WA



# SUITE 204

1,182 RSF (2,449 RSF Contiguous with Suite 202)

11311 Bridgeport Way SW | Lakewood, WA

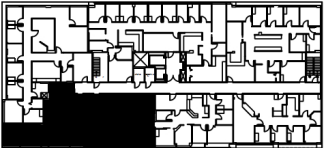
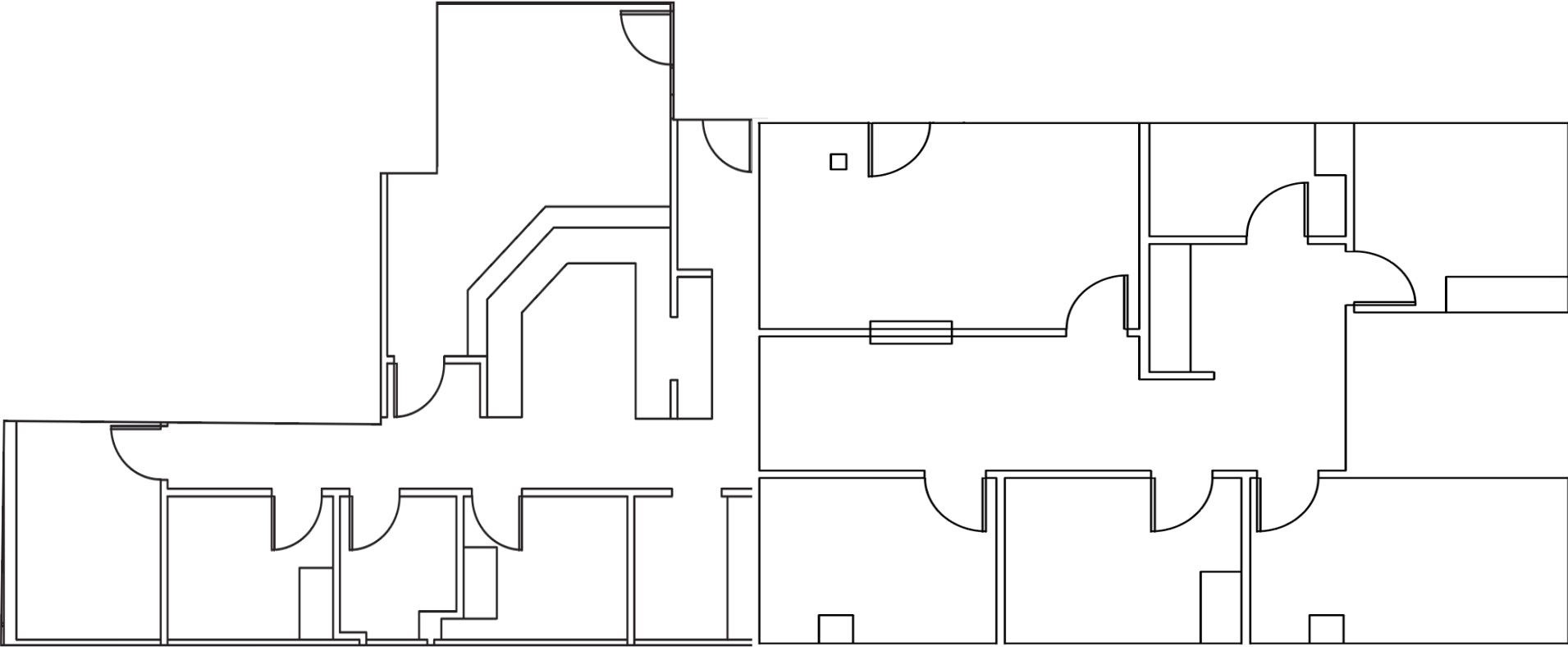


# SUITE 202 & 204

2,449 RSF (Contiguous)

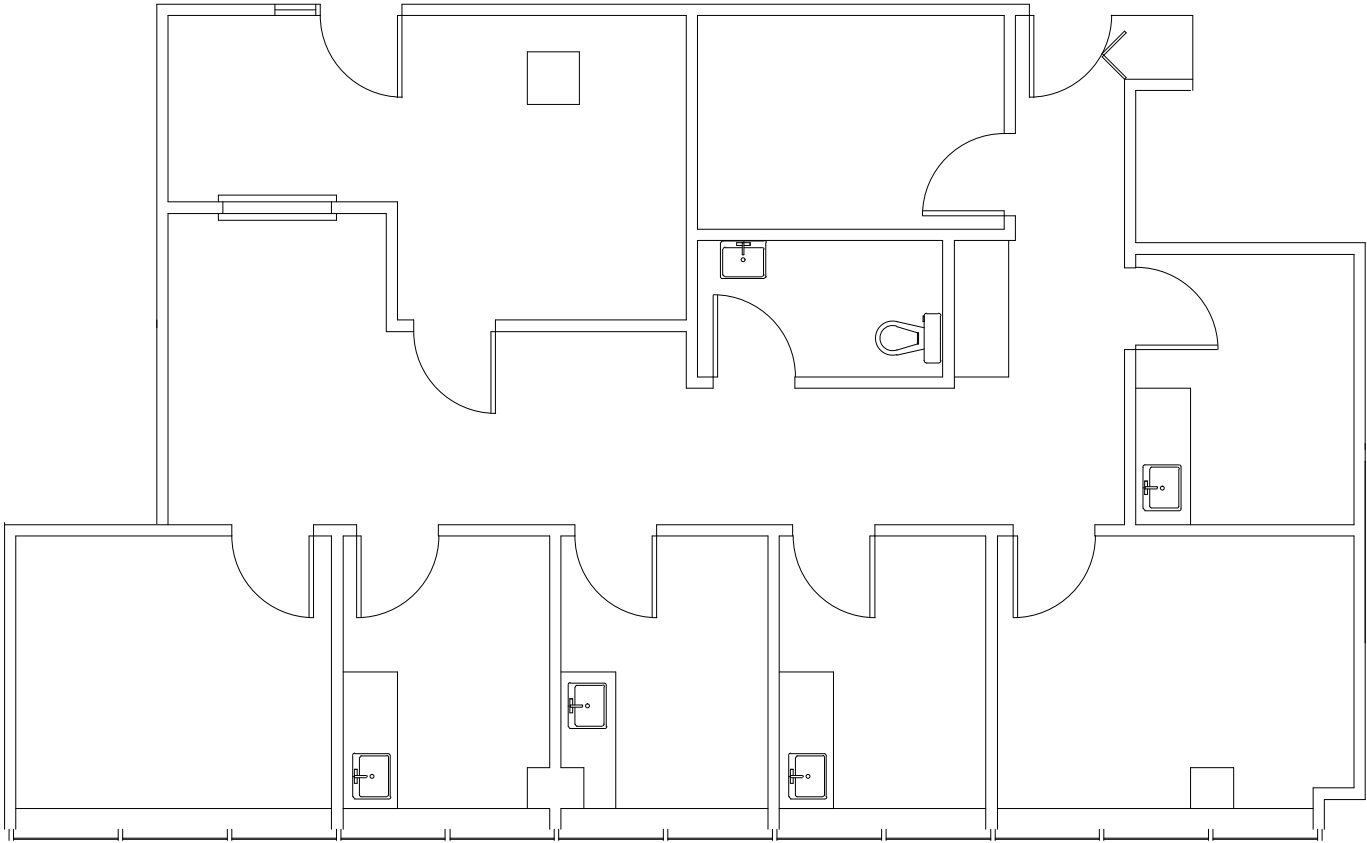


11311 Bridgeport Way SW | Lakewood, WA



# SUITE 302

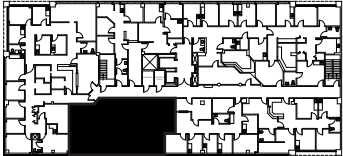
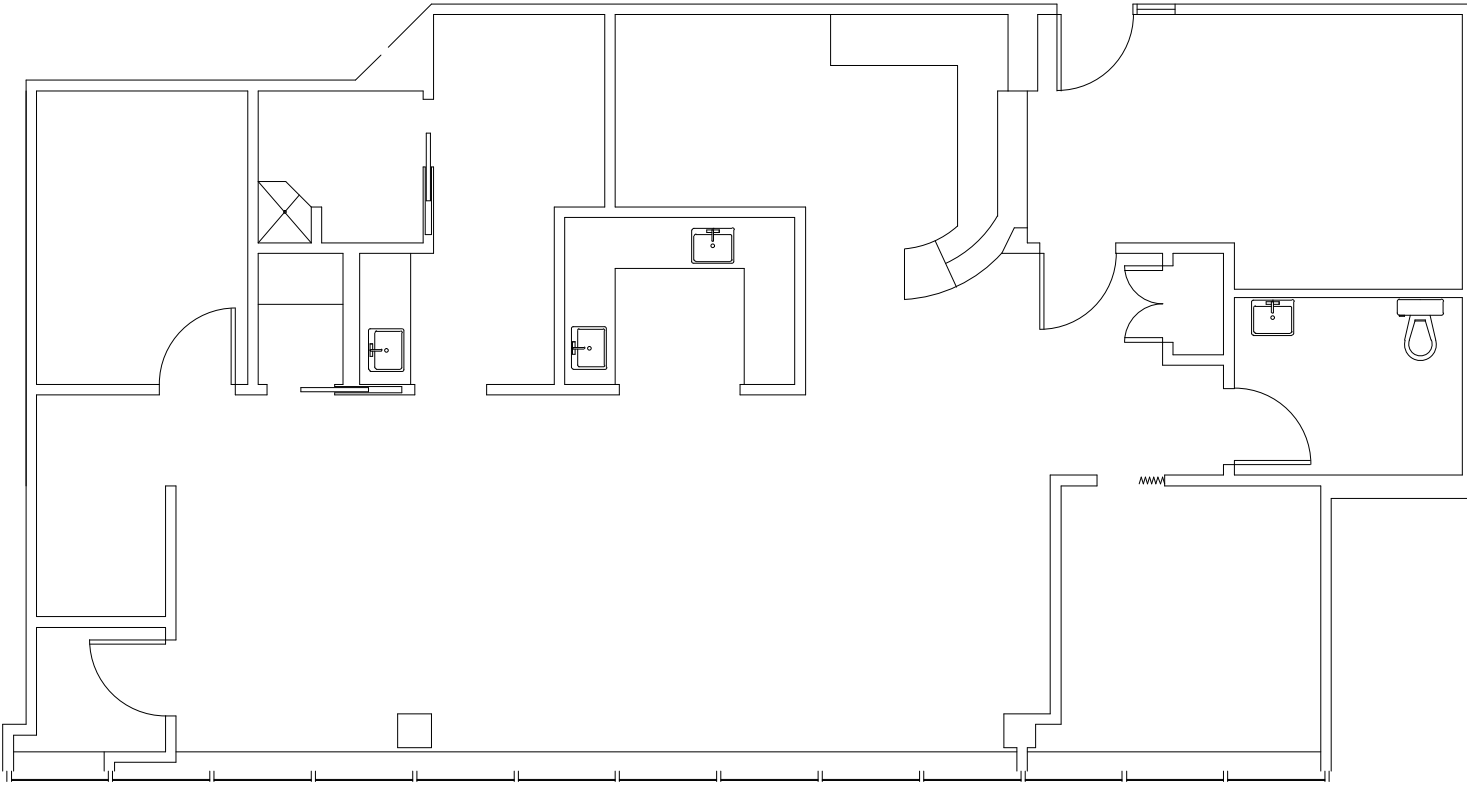
1,443 RSF (3,196 RSF Contiguous with Suite 303)



# SUITE 303

1,753 RSF (3,196 RSF Contiguous with Suite 302)

11311 Bridgeport Way SW | Lakewood, WA

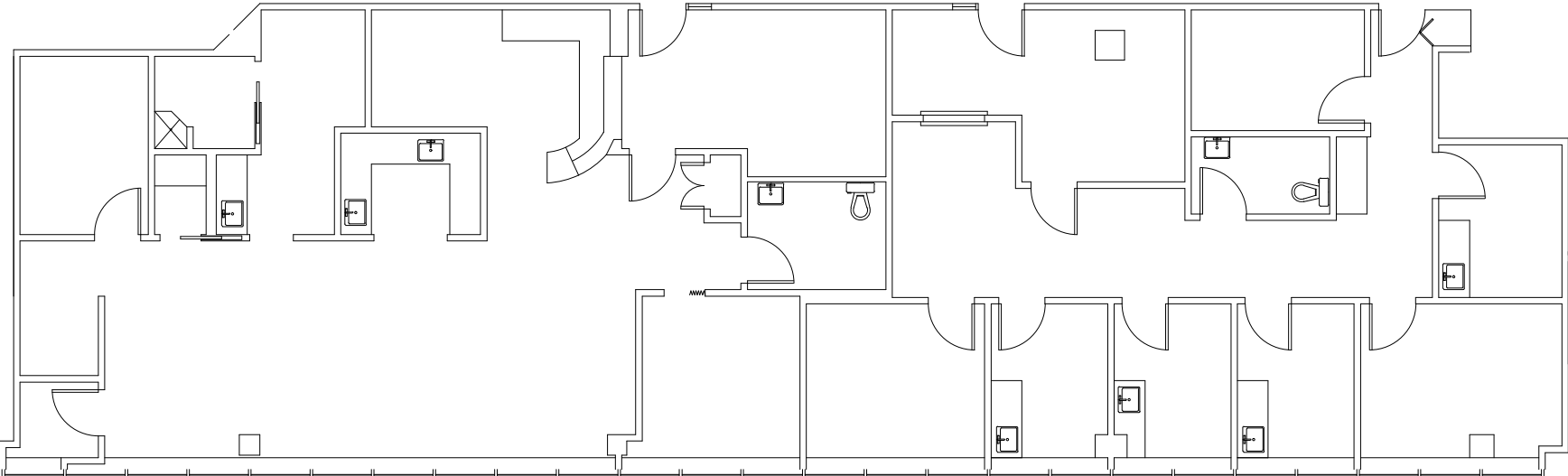


# SUITE 302 & 303

3,196 RSF (Contiguous)



11311 Bridgeport Way SW | Lakewood, WA



11311 Bridgeport Way SW | Lakewood, WA

# SOUTH SOUND



MEDICAL PORTFOLIO

St. Clare Medical Pavilion



**Marcus Yamamoto**

Senior Vice President

+1 206 979 1270

[marcus.yamamoto@cbre.com](mailto:marcus.yamamoto@cbre.com)

**Katie Smith**

Senior Associate

+1 206 949 7027

[katie.m.smith@cbre.com](mailto:katie.m.smith@cbre.com)

**Diane Di Furia**

Senior Transaction Manager

+1 206 386 3063

[diane.difuria@cbre.com](mailto:diane.difuria@cbre.com)

© 2024 CBRE, Inc. All rights reserved. This information has been obtained from sources believed reliable, but has not been verified for accuracy or completeness. You should conduct a careful, independent investigation of the property and verify all information. Any reliance on this information is solely at your own risk. CBRE and the CBRE logo are service marks of CBRE, Inc. All other marks displayed on this document are the property of their respective owners, and the use of such logos does not imply any affiliation with or endorsement of CBRE. Photos herein are the property of their respective owners. Use of these images without the express written consent of the owner is prohibited.PMStudio\_February2025

Healthpeak

DOC  
LISTED  
NYSE

CBRE