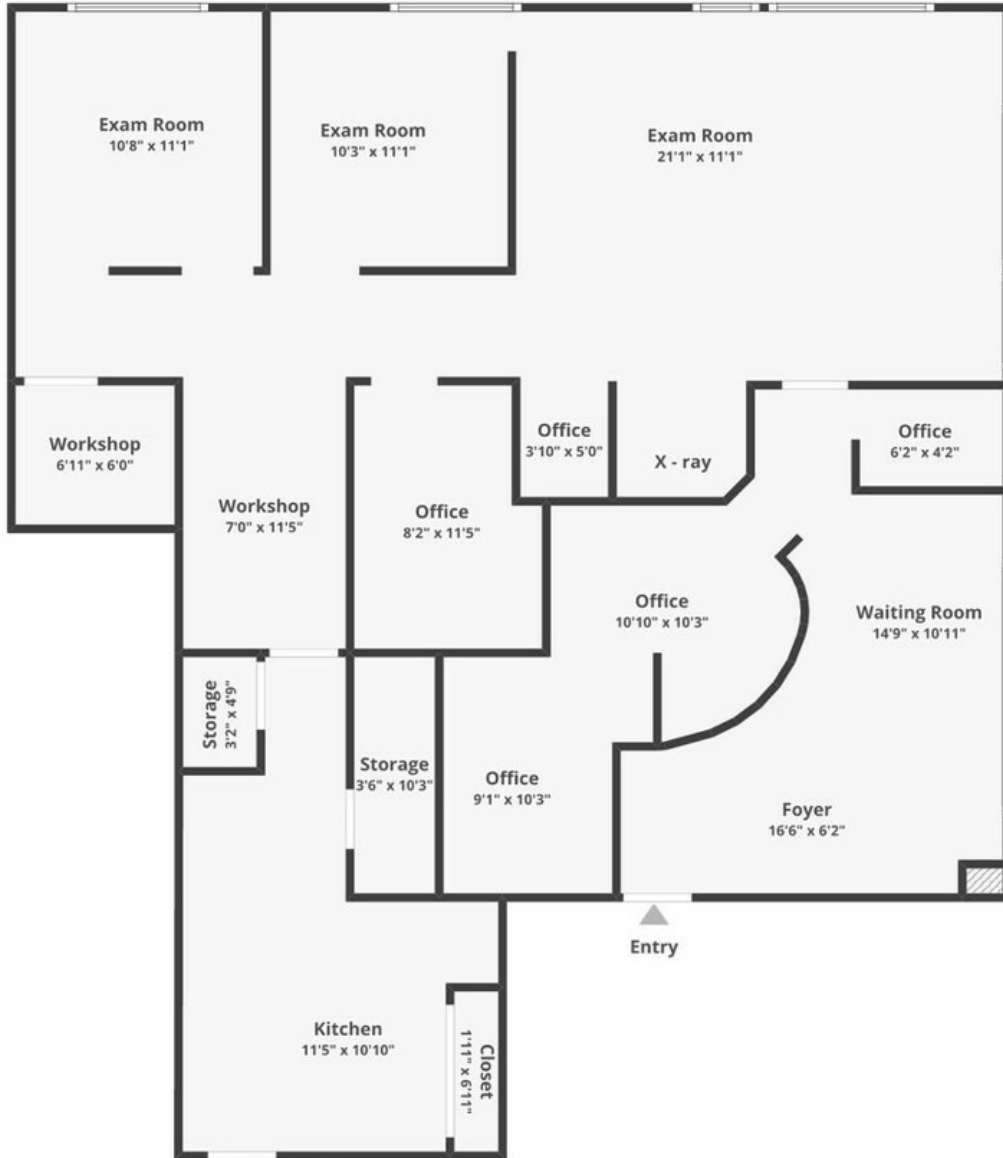


# ELK CROSSING BUSINESS CENTER

1189 South Perry Street - Bldg A | Castle Rock, CO 80104

Suite 250

1,888 SF



Suite	Size	Description
Suite 250	1,888 SF	Existing dental office buildout

Andrew Piepgras

303.882.6591  
apiepgras@lpc.com

Lincoln