

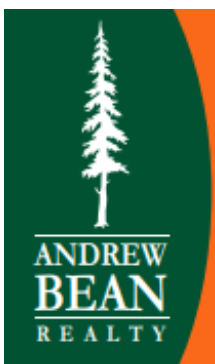
FOR SUBLEASE

9124 SE 67th Ave, Portland, Clackamas County, 97206

NO MULTNOMAH COUNTY TAXES!

DIRECT DEAL AVAILABLE

- +/-8,000 Sq. Ft. Shell of which +/-750 Sq. Ft. is Office.
- Two Grade-Level Loading Doors (14' High X 14' Wide).
 - Loading Dock with Access for 53' Trailer.
 - 14' – 16' Foot Tall Ceilings in Warehouse.
 - Bonus Mezzanine Storage.
 - 2 Bathrooms.
 - Heavy 3-Phase Power.



Andrew Bean, SIOR

503-819-5381

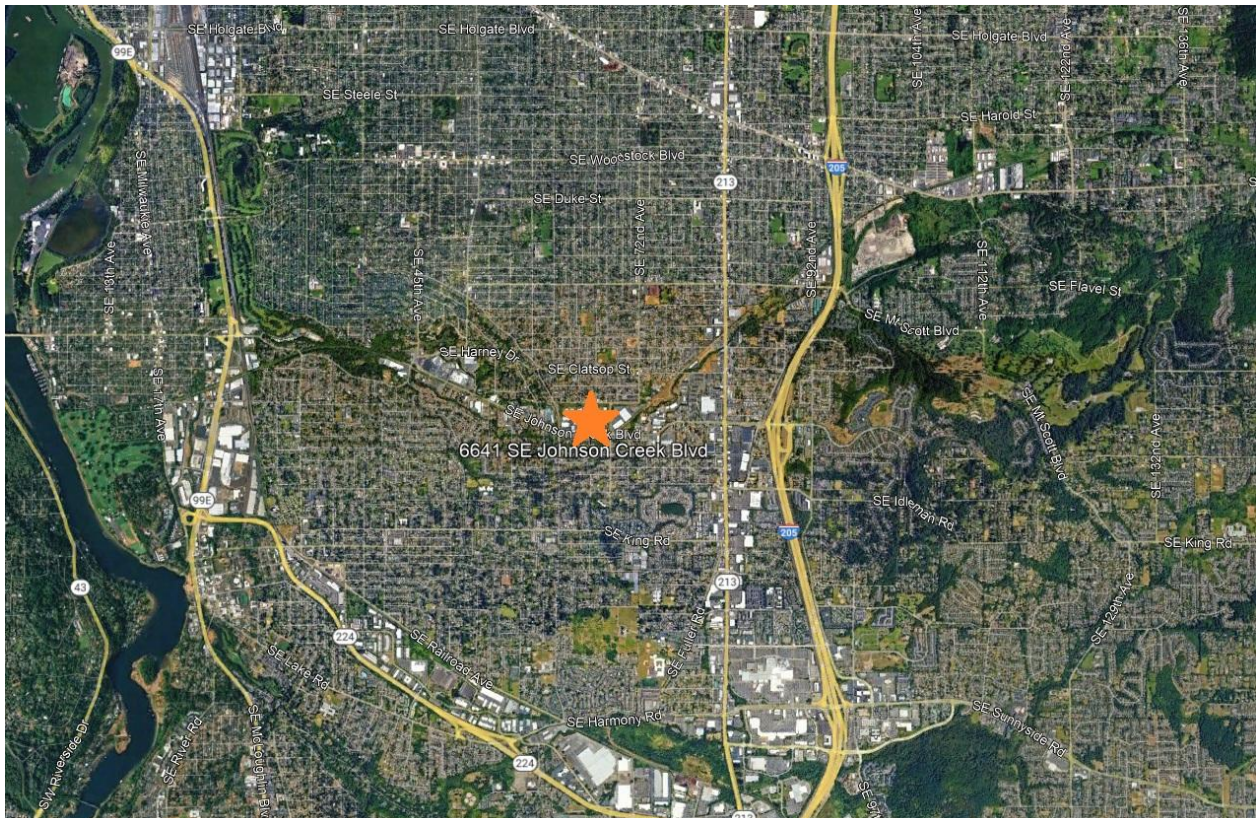
andrew@andrewbeanrealty.com

PO Box 10104
Portland, Oregon 97296

This information has been obtained by others and deemed to be reliable. However, a prospective purchaser or lessee is expected to verify all information to their own satisfaction.

FOR SUBLEASE

9124 SE 67th Ave, Portland, Clackamas County, 97206



Andrew Bean, SIOR

503-819-5381

andrew@andrewbeanrealty.com

This information has been obtained by others and deemed to be reliable. However, a prospective purchaser or lessee is expected to verify all information to their own satisfaction.