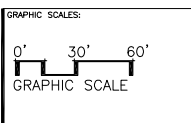


NOTE:  
FIRE LANE PAVING TO BE A MIN.  
OF 3" ASPHALT ON 6" ABC TO  
SUPPORT 83,000 GWW AS  
RECOMMENDED BY SOILS ENGINEER.

FIXTURE LEGEND	
TYPE	DESCRIPTION
	EXTERIOR MOUNTED WALL WASH FIXTURE.
	WIDE BEAM SURFACE MOUNTED LED CYLINDER.
	POLE MOUNTED FIXTURE.
	POLE MOUNTED FIXTURE.
	ADA PARKING SIGNAGE. REFER TO DETAIL.

SITE PLAN



**YAM CIRCLE**  
15600 N. HAYDEN ROAD  
SCOTTSDALE, AZ. 85260

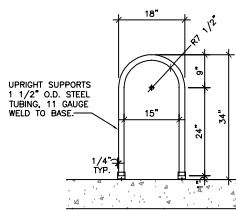
**K/G ARCHITECTS**  
788 E. REDFIELD ROAD  
SUITE 102  
SCOTTSDALE, AZ. 85260  
(480) 443-7105 - TEL.  
(480) 443-3985 - FAX



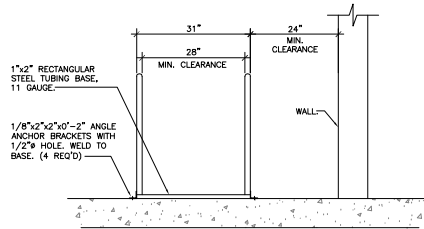
DRAWN BY:	DATE:	REVISIONS:	DATE:	ISSUED:
BIA			09-25-17	PERMIT
CHECKED BY:				
LK, PG				
PROJECT NO:	SITE PLAN			
16101				

SHEET NO:  
**A1-0**

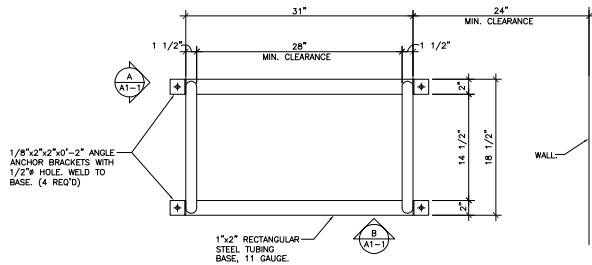
3-DR-2017



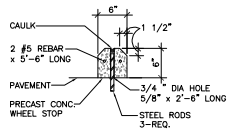
A



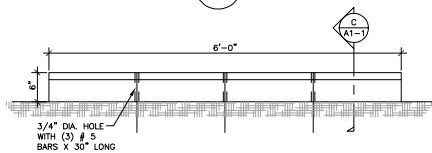
B



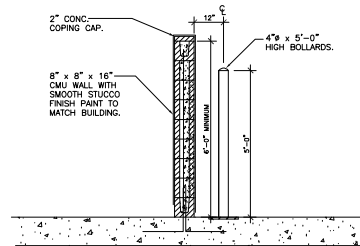
6 DOUBLE BIKE RACK  
1 1/2" = 1'-0"



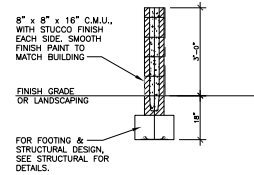
C



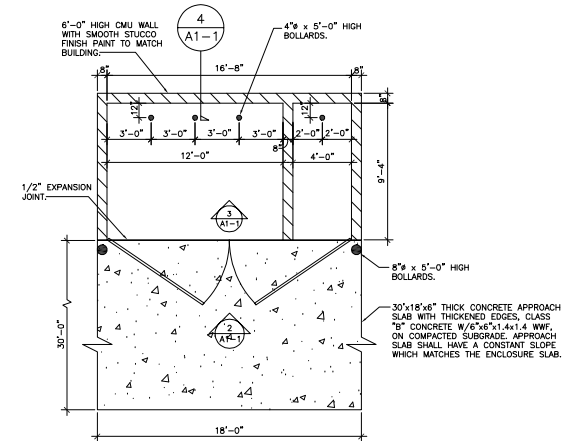
7 CAR WHEEL STOP  
1" = 1'-0"



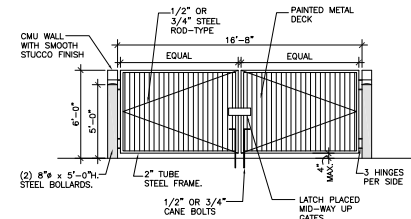
4 CMU SECTION @ TRASH ENCLOSURE  
1/2" = 1'-0"



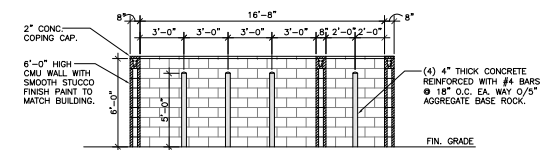
5 SITE SCREEN WALL  
1/2" = 1'-0"



1 REFUSE ENCLOSURE  
1/4" = 1'-0"  
W/ GREASE CONTAINMENT  
AREA C.O.S DETAIL 2146-2.



2 ELEVATION @ REFUSE ENCLOSURE  
1/4" = 1'-0"



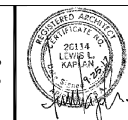
3 REFUSE ENCLOSURE  
1/4" = 1'-0"

GRAPHIC SCALES:



YAM CIRCLE  
15600 N. HAYDEN ROAD  
SCOTTSDALE, AZ. 85260

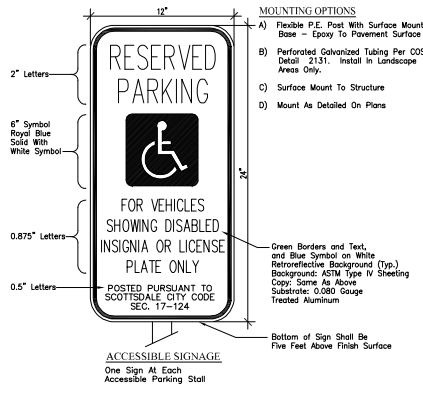
K/G ARCHITECTS  
788 E. REDFIELD ROAD  
SUITE 102  
SCOTTSDALE, AZ. 85260  
(480) 443-7105 - TEL.  
(480) 443-3985 - FAX



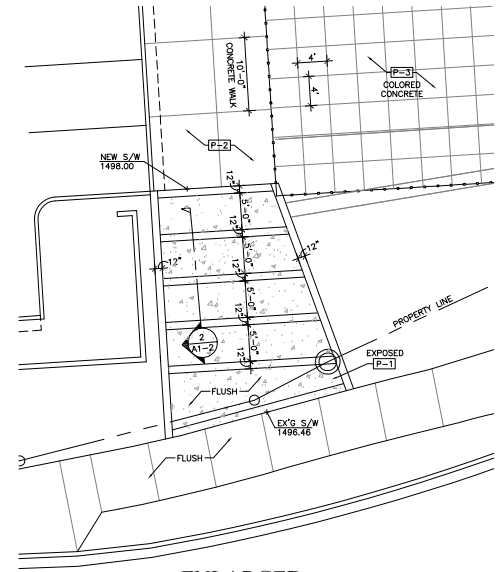
DRAWN BY:	DATE:	REVISIONS:	DATE:	ISSUED:
BIA			09-25-17	PERMIT
CHECKED BY:				
LK, PG				
PROJECT NO:	SITE DETAILS			
16101				

SHEET NO:  
**A1-1**

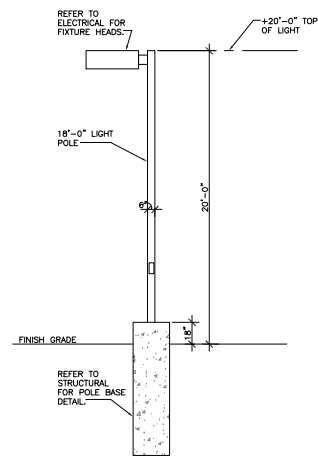
3-DR-2017



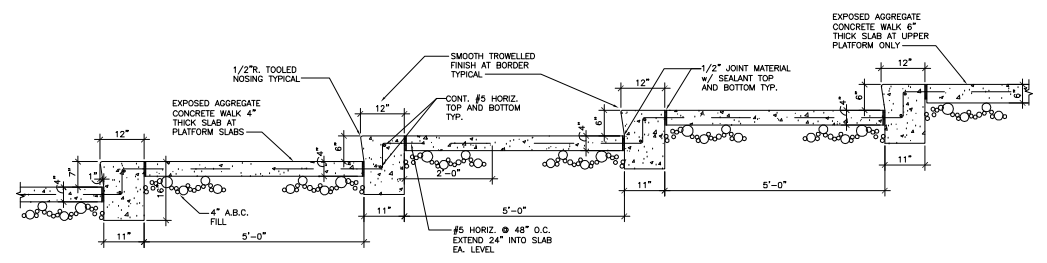
4 ACCESSIBLE PARKING SIGN  
NTS



1 ENLARGED PLAN @ PLAZA  
1/8" = 1'-0"



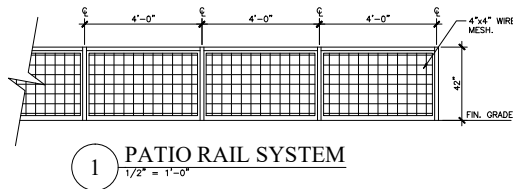
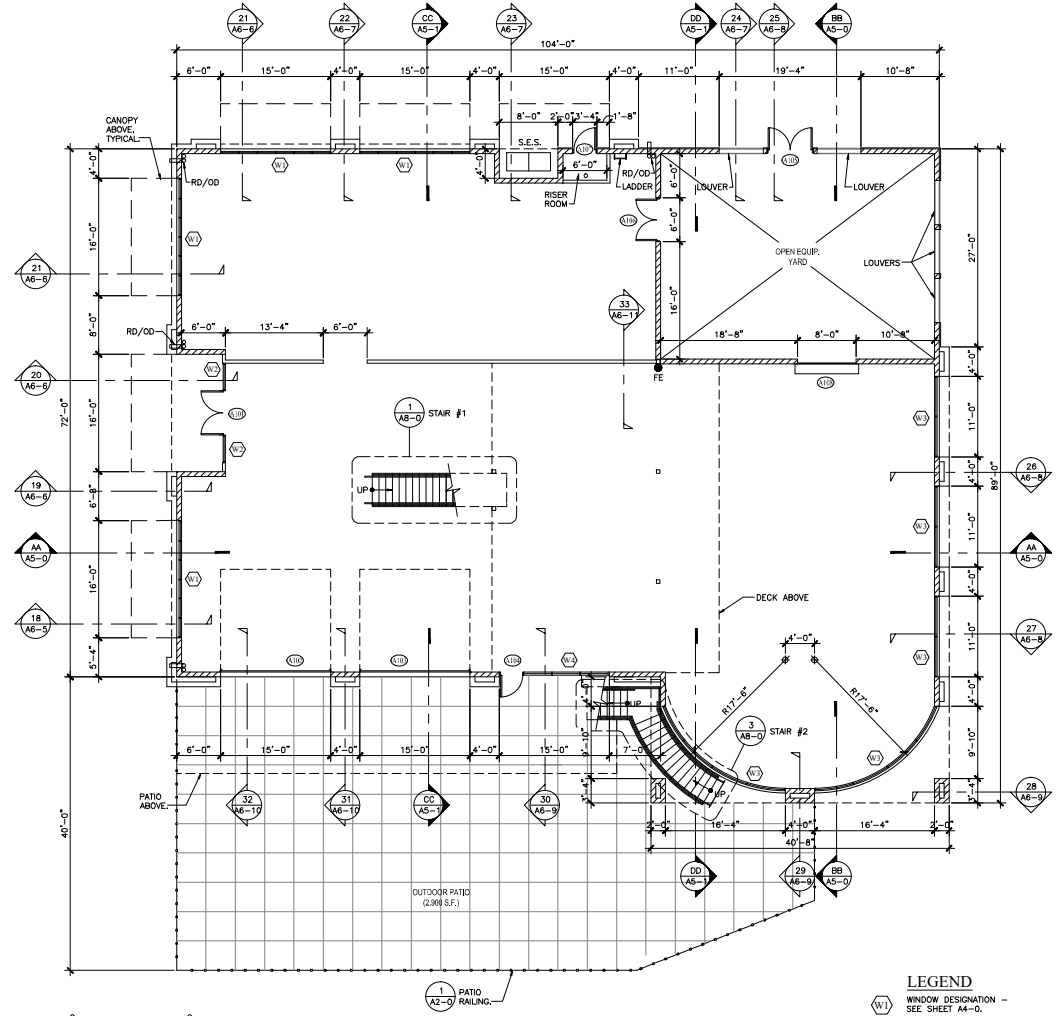
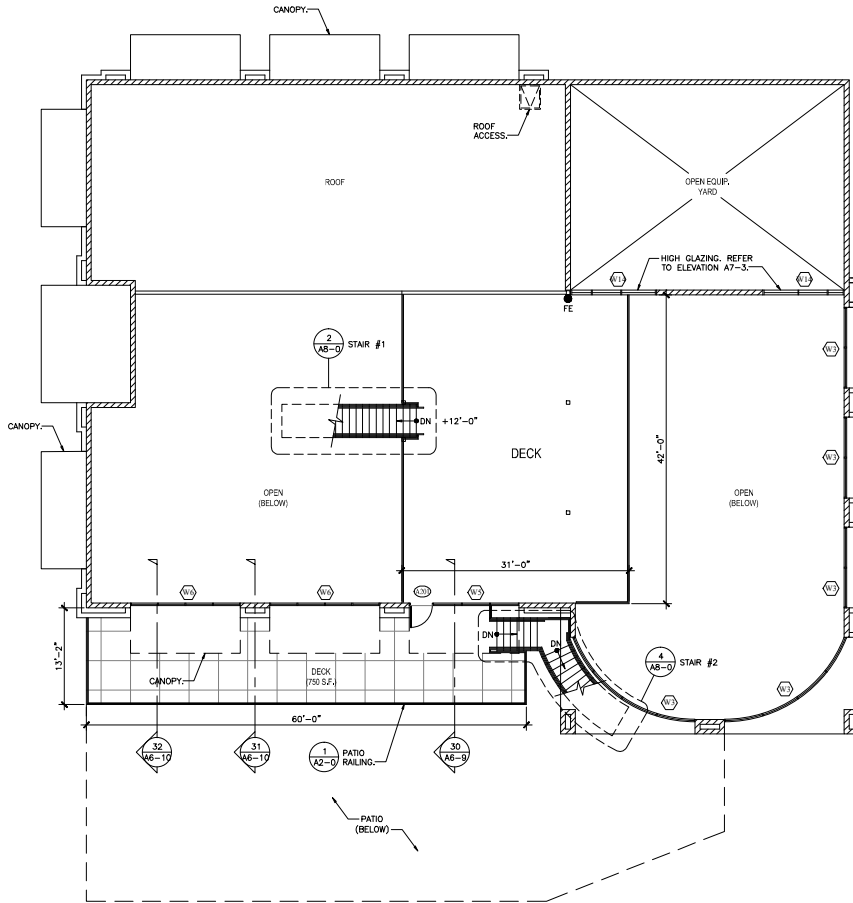
3 SITE LIGHT POLE DETAIL  
1/4" = 1'-0"



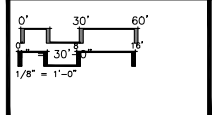
2 SECTION @ PLAZA  
3/4" = 1'-0"

GRAPHIC SCALES:		<b>YAM CIRCLE</b> 15600 N. HAYDEN ROAD SCOTTSDALE, AZ. 85260	<b>K/G ARCHITECTS</b> 7885 E. REDFIELD ROAD SUITE 702 SCOTTSDALE, AZ. 85260 (480) 443-7105 - TEL. (480) 443-8805 - FAX		DRAWN BY: BIA CHECKED BY: LK, PG PROJECT NO: 16101	DATE: 09-25-17 REVISIONS: SHEET NO: A1-2	DATE: 09-25-17 ISSUED: PERMIT SHEET NO: A1-2
					<b>SITE DETAILS</b>		<b>A1-2</b>

3-DR-2017



- LEGEND**
- (W1) WINDOW DESIGNATION - SEE SHEET A4-0.
  - (101) DOOR DESIGNATION - SEE SHEET A4-0.
  - FE FIRE EXTINGUISHER 2A TO ECG WALL MOUNTED
  - - - BUILDING SECTION
  - - - WALL SECTION
  - - - DETAIL



**YAM CIRCLE**  
15600 N. HAYDEN ROAD  
SCOTTSDALE, AZ. 85260

**K/G ARCHITECTS**  
7545 E. REDFIELD ROAD  
SUITE 102  
SCOTTSDALE, AZ. 85260  
(480) 443-7105 - TEL.  
(480) 443-3007 - FAX



DRAWN BY: BIA  
CHECKED BY:  
LK, PG  
PROJECT NO: 16101

DATE	REVISIONS	DATE	ISSUED:
09-25-17			PERMIT
BLDG. 'A' 1ST & 2ND FLOOR PLANS		SHEET NO: A2-0	

3-DR-2017