



## East Britt David Road Office Spaces

3878 E Britt David Rd  
Columbus, Georgia 31909

### Property Highlights

- Abundant parking for tenants and guests
- Easy accessibility to major roadways
- Versatile layout to accommodate various business needs
- Convenient location for staff and clients

### Property Overview

3878 E Britt David Road is a recently updated office building with one available suite. The property offers ample parking for employees and customers, convenient access to major roadways, and a well-maintained exterior. Inside, the spacious and newly renovated interior provides a flexible canvas for creating a tailored workspace. This property presents a prime opportunity to establish your business in a sought-after location.

### Offering Summary

<b>Lease Rate:</b>	\$1,500 per month (MG)
<b>Building Size:</b>	4,050 SF
<b>Available SF:</b>	+/- 1,000 SF
<b>Lot Size:</b>	0.36 Acres

### Demographics 0.3 Miles 0.5 Miles 1 Mile

<b>Total Households</b>	257	836	3,143
<b>Total Population</b>	558	1,782	6,973
<b>Average HH Income</b>	\$60,333	\$60,911	\$68,142

### For More Information

**Amy D. Gill, MICP, MRP**

O: 706 660 5418 x1009  
agill@g2cre.com | GA #381793



### Lease Information

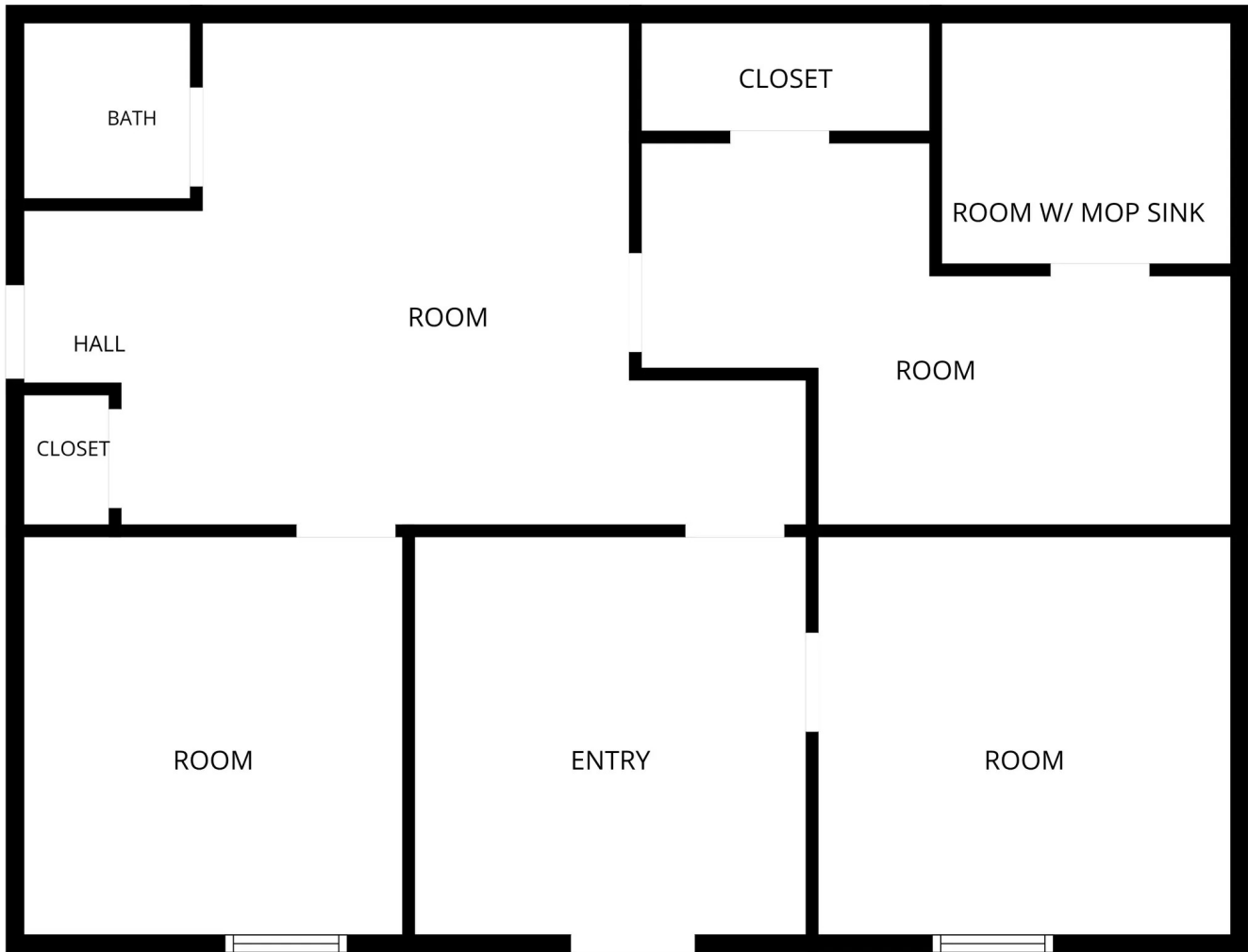
<b>Lease Type:</b>	MG	<b>Lease Term:</b>	Negotiable
<b>Total Space:</b>	1,000 SF	<b>Lease Rate:</b>	\$1,500 per month

### Available Spaces

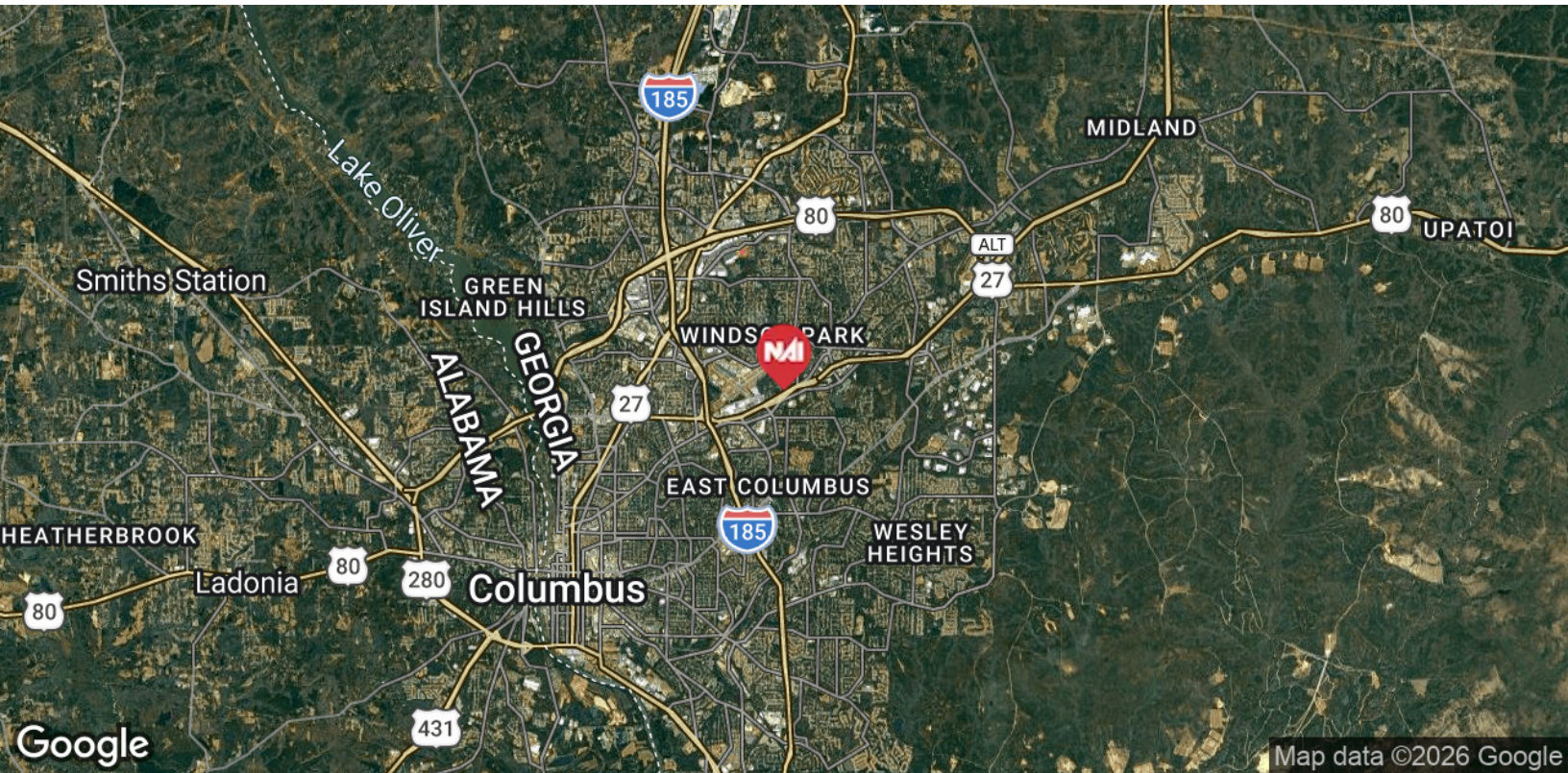
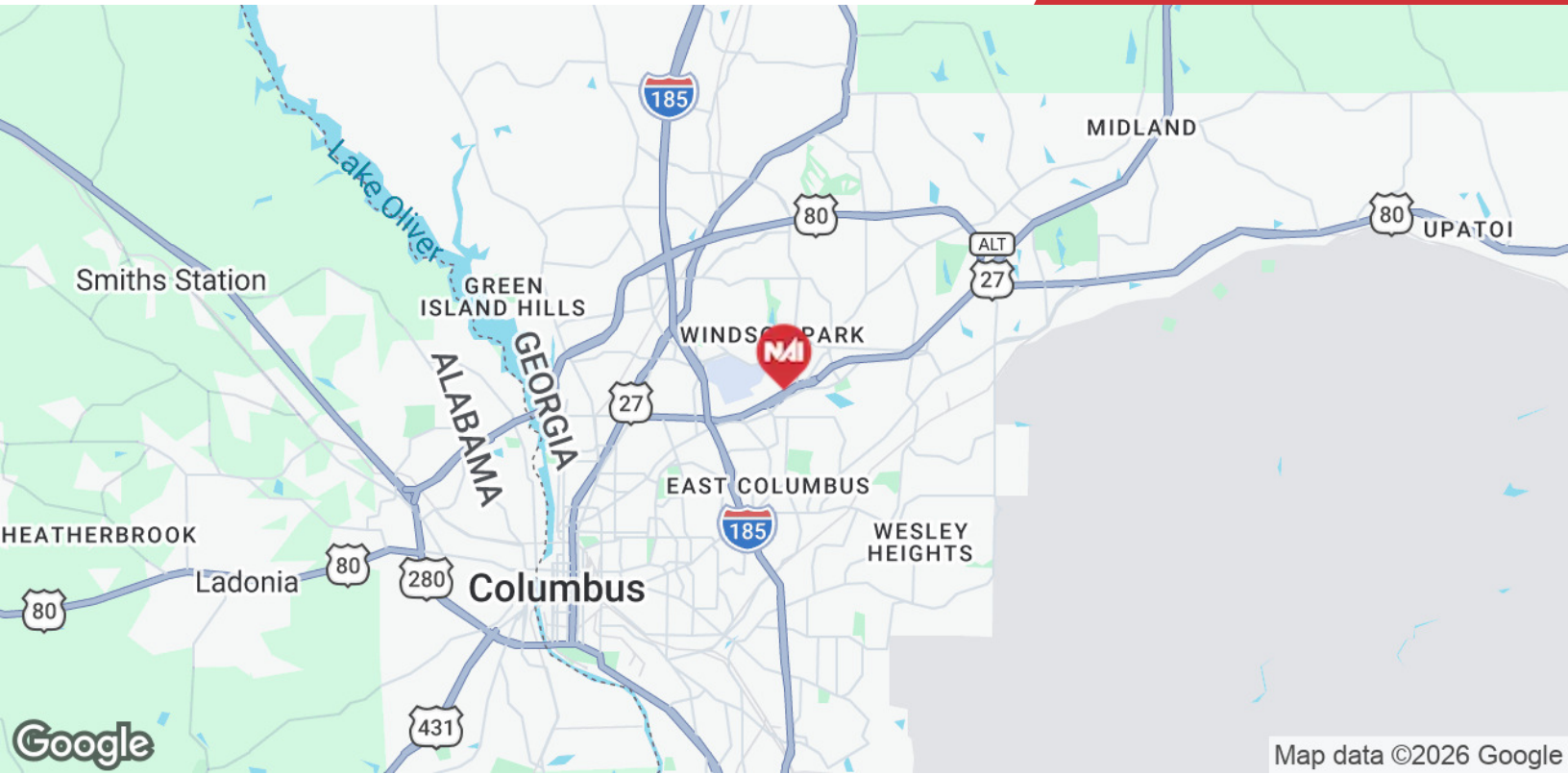
#### Suite Size (SF) Lease Type Lease Rate Description

Suite Size (SF)	Lease Type	Lease Rate	Description
Suite 3 1,000 SF	Modified Gross	\$1,500 per month	Suite 3 is designed to accommodate various work-related needs with its mix of private offices, a flexible open area, a restroom, and a compact kitchen. Available 11/1/25.



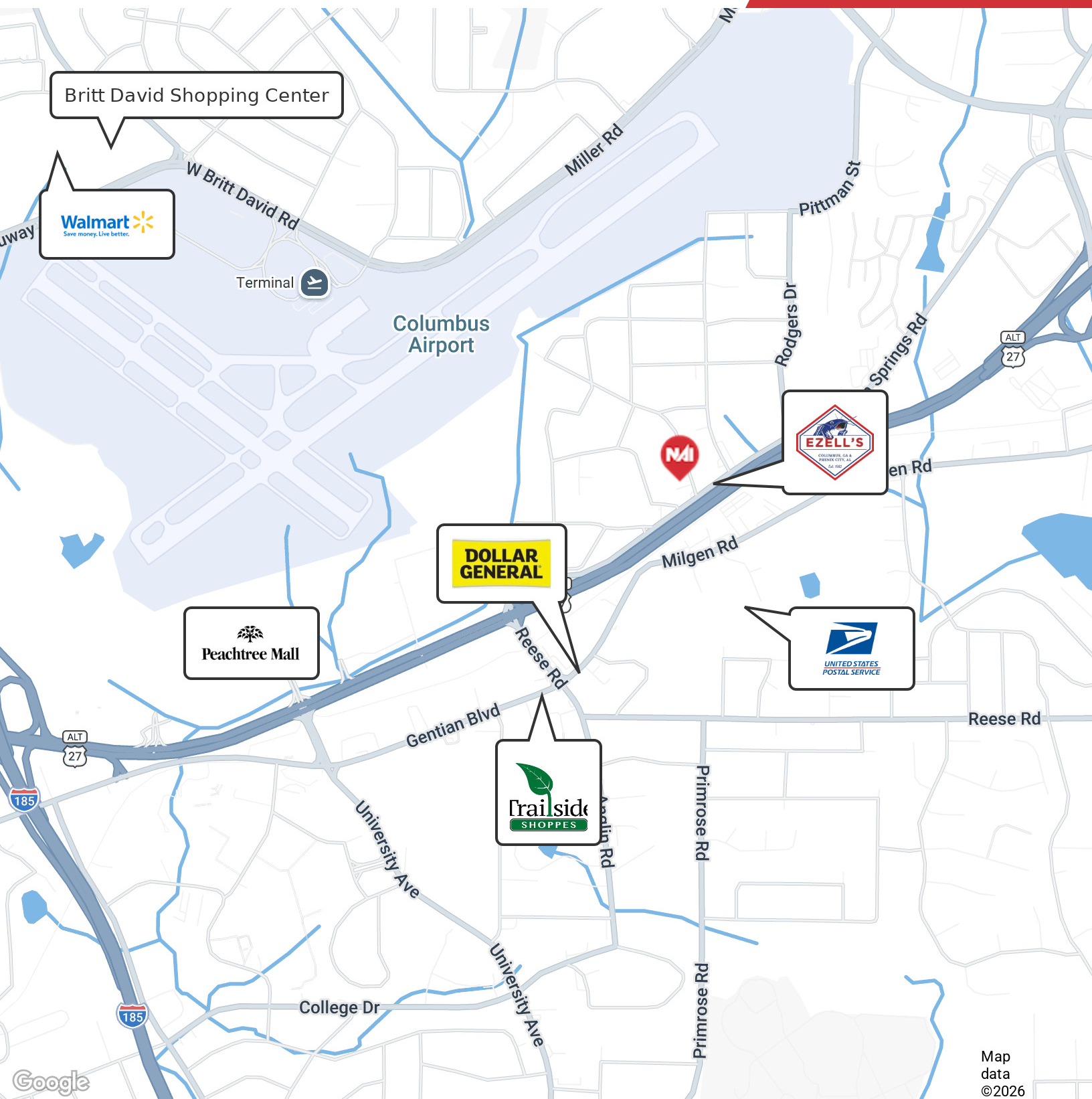


FLOOR PLAN CREATED BY CUBICASA APP. MEASUREMENTS DEEMED HIGHLY RELIABLE BUT NOT GUARANTEED.



We obtained the information above from sources we believe to be reliable. However, we have not verified its accuracy and make no guarantee, warranty or representation about it. It is submitted subject to the possibility of errors, omissions, change of price, rental or other conditions, prior sale, lease or financing, or withdrawal without notice. We include projections, opinions, assumptions or estimates for example only, and they may not represent current or future performance of the property. You and your tax and legal advisors should conduct your own investigation of the property and transaction.

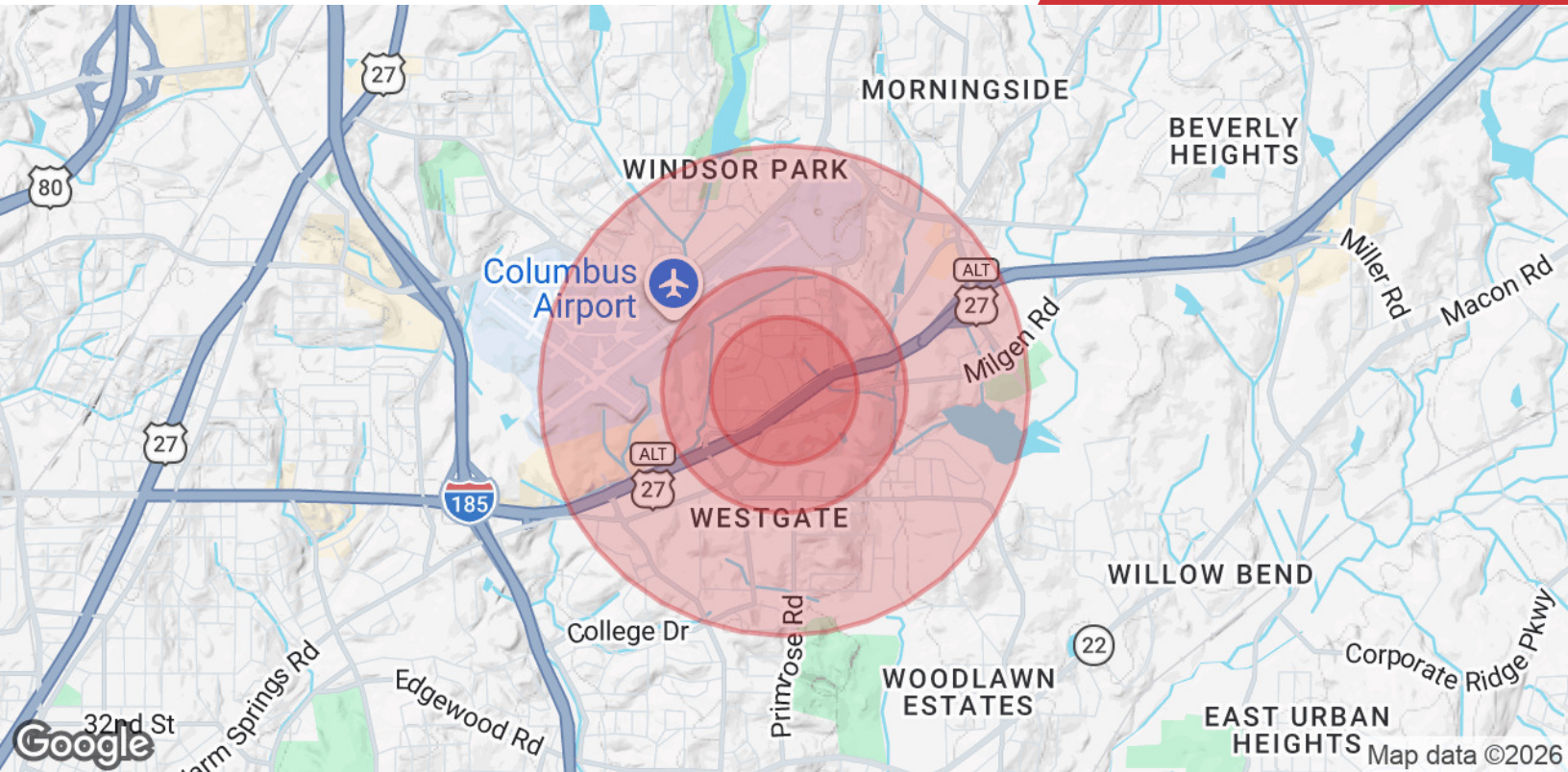
Post Office Box 4529  
Columbus, GA 31904  
706 660 5418 tel  
[G2cre.com](http://G2cre.com)



Map data ©2026

We obtained the information above from sources we believe to be reliable. However, we have not verified its accuracy and make no guarantee, warranty or representation about it. It is submitted subject to the possibility of errors, omissions, change of price, rental or other conditions, prior sale, lease or financing, or withdrawal without notice. We include projections, opinions, assumptions or estimates for example only, and they may not represent current or future performance of the property. You and your tax and legal advisors should conduct your own investigation of the property and transaction.

Post Office Box 4529  
Columbus, GA 31904  
706 660 5418 tel  
[G2cre.com](http://G2cre.com)



### Population

	0.3 Miles	0.5 Miles	1 Mile
<b>Total Population</b>	558	1,782	6,973
<b>Average Age</b>	35	35	37
<b>Average Age (Male)</b>	33	34	36
<b>Average Age (Female)</b>	36	37	39

### Households & Income

	0.3 Miles	0.5 Miles	1 Mile
<b>Total Households</b>	257	836	3,143
<b># of Persons per HH</b>	2.2	2.1	2.2
<b>Average HH Income</b>	\$60,333	\$60,911	\$68,142
<b>Average House Value</b>	\$185,570	\$198,893	\$224,990

2020 American Community Survey (ACS)

### Owner Disclosure Notice

Member(s) of the property ownership are licensed real estate professionals in the State of Georgia, and hold an ownership interest in the property being advertised.