

COMMERCIAL DEVELOPMENT LAND

TBD HWY 21

IDAHO CITY, ID 83631



rallensrealty.com



RALLENS REALTY
CONSULTANTS

FOR SALE



PROPERTY INFORMATION

ADDRESS	TBD Hwy 21
CITY, STATE, ZIP	Idaho City, ID 83631
COUNTY	Boise
ZONING	Commercial
ACRES	Total: ±5.49 Parcel 1: ±2.48 Parcel 2: ±2.97
PURCHASE PRICE	\$549,000

HIGHLIGHTS

- Excellent visibility along one of Idaho's scenic byways providing access to Sawtooth National Recreation Area from the Treasure Valley
- City Services available
- Approximately 1/2 mile of Hwy 21 frontage
- Only 30 minutes from Boise Valley
- Incredible growth area with deep history and charm
- Parcels can be sold together or separately
- Excellent location for RV storage, RV park or tiny home community

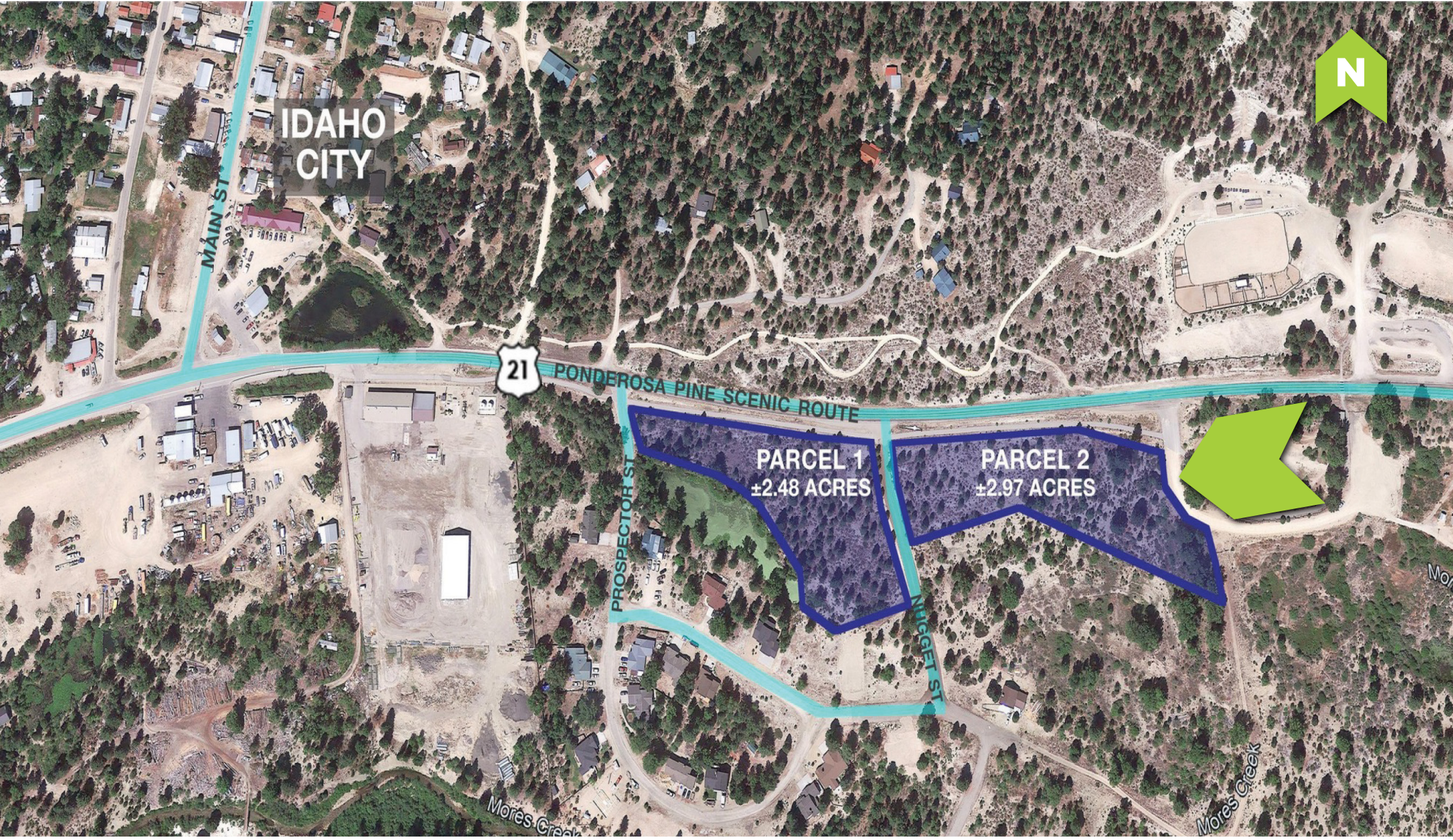
This information, while not guaranteed, is from sources we believe to be reliable. This data is subject to price change, corrections, errors, omissions, prior sale, and/or withdrawal.

BRIAN RALLENS

208.761.0924 | brian@rallensrealty.com

RALLENS REALTY CONSULTANTS | 401 W FRONT ST, SUITE 307, BOISE, ID 83702 | 208.996.1055





TBD HWY 21 | IDAHO CITY, ID 83631



BRIAN RALLENS

208.761.0924 | brian@rallensrealty.com

rallensrealty.com

