



FOR SALE



OFFICE BUILDING



13,790 SF



19801 Mariner Ave.

Torrance, California 90503

Property Highlights

- Well-maintained main two story front building with a turnkey former preschool existing CUP on the ground floor and high-quality second floor office space.
- ±12,140 SF main two story front building with additional ±1,650 SF, rear single story building on a ±42,300 SF parcel with abundant parking and backup generator.
- This property is also offered for Lease, call broker for more information.
- Versatile opportunity for an owner-user, or tenant; delivered vacant and for office, medical, light industrial uses; Existing approval for pre-school on the ground floor and possible approval for second floor pre-school.
- 3 preschool playrooms, kitchen and restrooms (on Ground floor, & executive office, restrooms, conference room and private offices on the second floor.)
- Prime South Bay location in Torrance, just off Hathorne Blvd, offering proximity to the Beach Cities, Palos Verdes Peninsula, and major employment centers.
- Convenient access to nearby neighborhoods, retail corridors, medical and profession services, three Hospitals and I-405, 110 and 91 Freeways.

OFFERING SUMMARY

Main Two Story Front Building:	12,140± SF
Rear Single Story Building:	1,650± SF

DEMOGRAPHICS

	1 MILE	3 MILES	5 MILES
Total Households	10,991	89,857	215,881
Total Population	28,659	233,688	585,860
Average HH Income	\$84,444	\$95,829	\$92,535

Sheri Messerlian

Executive Vice President | 310.436.1762
smesserlian@naicapital.com | CalDRE #00450571

Ilmar Kalviste

Vice President | 310.878.6923
ikalviste@naicapital.com | CalDRE #01331187





FOR SALE



OFFICE BUILDING



13,790 SF



Sheri Messerlian
Executive Vice President | 310.436.1762
smesserlian@naicapital.com | CalDRE #00450571

Ilmar Kalviste
Vice President | 310.878.6923
ikalviste@naicapital.com | CalDRE #01331187



www.naicapital.com

©NAI CAPITAL COMMERCIAL, INC. CONTENT IN THIS DOCUMENT MAY INCLUDE AI GENERATED OR ALTERED TEXT, IMAGES AND/OR ANALYSIS. NO WARRANTY, EXPRESS OR IMPLIED, IS MADE AS TO THE ACCURACY OF THE INFORMATION CONTAINED HEREIN. THIS INFORMATION IS SUBMITTED SUBJECT TO ERRORS, OMISSIONS, CHANGE OF PRICE, RENTAL OR OTHER CONDITIONS, WITHDRAWAL WITHOUT NOTICE, AND IS SUBJECT TO ANY SPECIAL LISTING CONDITIONS IMPOSED BY OUR PRINCIPALS, COOPERATING BROKERS, BUYERS, TENANTS AND OTHER PARTIES WHO RECEIVE THIS DOCUMENT SHOULD NOT RELY ON IT, BUT SHOULD USE IT AS A STARTING POINT OF ANALYSIS, AND SHOULD INDEPENDENTLY CONFIRM THE ACCURACY OF THE INFORMATION CONTAINED HEREIN THROUGH A DUE DILIGENCE REVIEW OF THE BOOKS, RECORDS, FILES AND DOCUMENTS THAT CONSTITUTE RELIABLE SOURCES OF THE INFORMATION DESCRIBED HEREIN. UNEDITED IMAGES VIEWABLE AT NAICAPITAL.COM | CAL DRE LIC #02130474



FOR SALE



OFFICE BUILDING



13,790 SF



Sheri Messerlian

Executive Vice President | 310.436.1762
smesserlian@naicapital.com | CalDRE #00450571

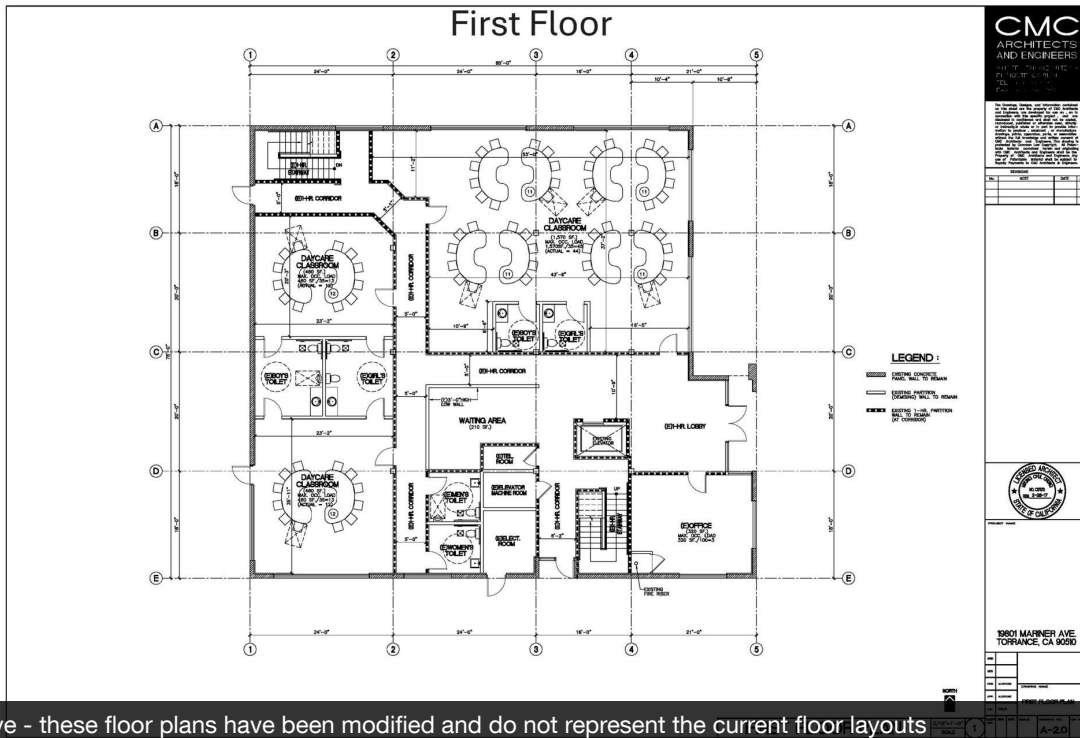
Ilmar Kalviste

Vice President | 310.878.6923
ikalviste@naicapital.com | CalDRE #01331187

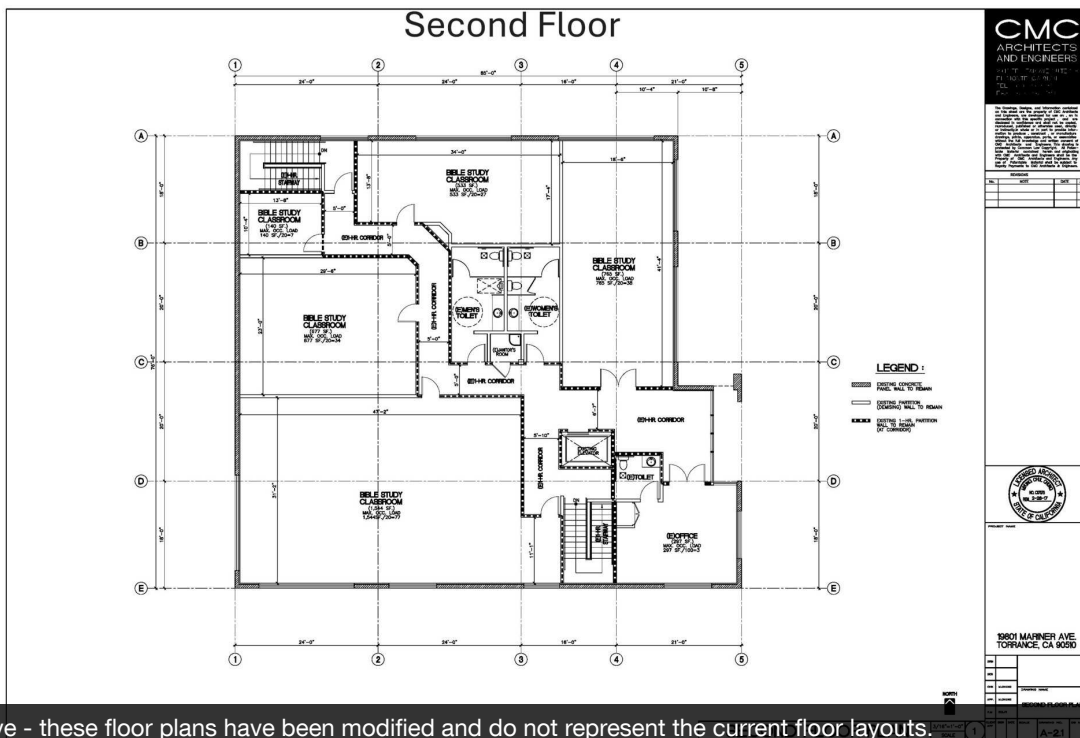


www.naicapital.com

©NAI CAPITAL COMMERCIAL, INC. CONTENT IN THIS DOCUMENT MAY INCLUDE AI GENERATED OR ALTERED TEXT, IMAGES AND/OR ANALYSIS. NO WARRANTY, EXPRESS OR IMPLIED, IS MADE AS TO THE ACCURACY OF THE INFORMATION CONTAINED HEREIN. THIS INFORMATION IS SUBMITTED SUBJECT TO ERRORS, OMISSIONS, CHANGE OF PRICE, RENTAL OR OTHER CONDITIONS, WITHDRAWAL WITHOUT NOTICE, AND IS SUBJECT TO ANY SPECIAL LISTING CONDITIONS IMPOSED BY OUR PRINCIPALS. COOPERATING BROKERS, BUYERS, TENANTS AND OTHER PARTIES WHO RECEIVE THIS DOCUMENT SHOULD NOT RELY ON IT, BUT SHOULD USE IT AS A STARTING POINT OF ANALYSIS, AND SHOULD INDEPENDENTLY CONFIRM THE ACCURACY OF THE INFORMATION CONTAINED HEREIN THROUGH A DUE DILIGENCE REVIEW OF THE BOOKS, RECORDS, FILES AND DOCUMENTS THAT CONSTITUTE RELIABLE SOURCES OF THE INFORMATION DESCRIBED HEREIN. UNEDITED IMAGES VIEWABLE AT NAICAPITAL.COM | CAL DRE LIC #02130474



Floor Plans are illustrative - these floor plans have been modified and do not represent the current floor layouts



Floor Plans are illustrative - these floor plans have been modified and do not represent the current floor layouts.

Sheri Messerlian
Executive Vice President | 310.436.1762
smesserlian@naicapital.com | CalDRE #00450571

Ilmar Kalviste
Vice President | 310.878.6923
ikalviste@naicapital.com | CalDRE #01331187





FOR SALE

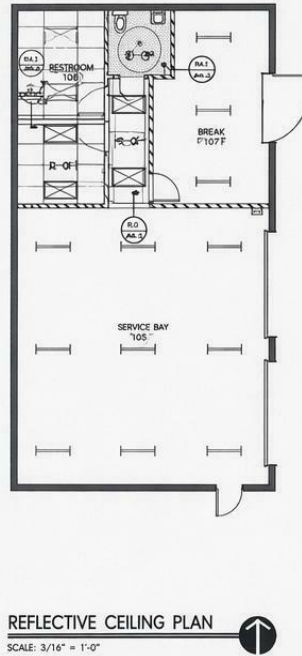
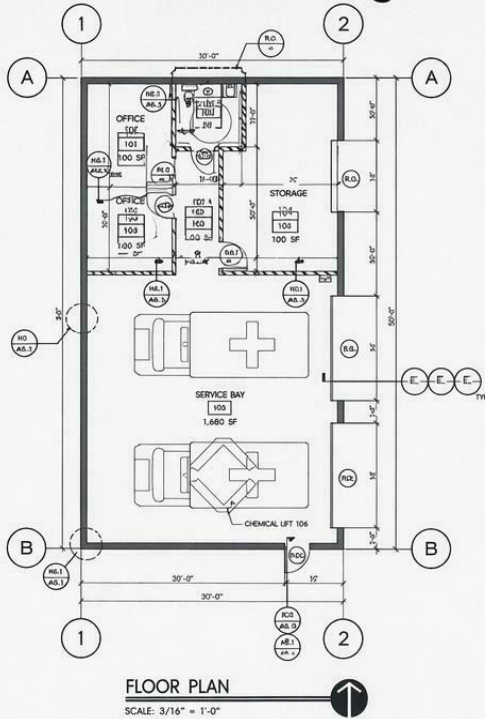
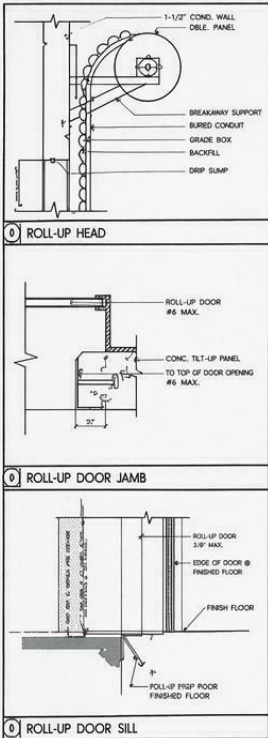


OFFICE BUILDING



13,790 SF

Rear Single Story Building



SYMBOLS LEGEND

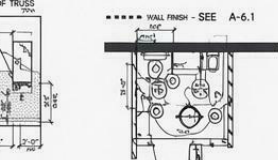
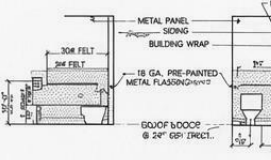
- RECESSED 2"x4" FLUORESCENT 2 LAMP LIGHT FIXTURE
- RECESSED INCANDESCENT LIGHT FIXTURE
- SURFACE WALL WASHER
- SURFACE INCANDESCENT LIGHT FIXTURE
- EMERGENCY/EXIT OR COMBO HEAD W/REMOTE LAMP FIXTURE
- EXIT SIGN
- 24x24 SUSPENDED ACOUSTICAL CEILING TILE AND GRID - 10'-0" A.F.F. (S.U.N.O.) (USE "1050" 4000 OR EQUAL, OR OWNER TO CONFIRM.)
- HARD CEILING - 10'-0" A.F.F. (S.U.N.O.) (USE "1050" 4000 DRIVALL® OR SIB® SHEETROCK SPAN OR EQUAL, AND PAINTED BY FINISH SCHEDULE)
- DRAFT STOP
- X - ROOM #
X-X OCCUPANCY GROUP
X-X EXIT CAPACITY
X-X DOOR #
- FE FIRE EXTINGUISHER MOUNTED ABOVE A.F.F.

WALL LEGEND

- CONCRETE PANEL
- EXISTING WALL
- INTERIOR CMU WALL
- LOW WALL
- NEW PARTITION - FROM FLOOR TO DECK AND CEILING SYSTEM

- ALL PARTITIONS TO BE MOUNTED TIGHT TO DECK OR TO WALL AND CALKED.
- PROVIDE FIRESTOP ACCESSORIES WHERE REQUIRED.
- ROLLED SPACE PARTITIONS (TYP.)
 - BREAKAWAY SUPPORT, BUFFERS AND PLATE
 - GYPSUM BOARD ON METAL STUDS
 - GRADE 1 EXIT HARDWARE ON EXIT DOORS
 - SPRAY 1 KIT HORIZONTAL, GWB BAR
 - PAINTED HOLLOW METAL FRAME AT COVER
 - PAINT FINISHED HOLLOW METAL DOOR
 - PAINTED HOLLOW METAL D FRAME
 - PAINT FINISHED HOLLOW METAL DOOR

- ROLLED SPACE PARTITION FOR 3 BAY COMMERCIAL INTERIOR PACKAGES (TYP. AT OFFICE AREA)
 - FLUSH INSULATED HOLLOW METAL DOOR
 - DIARY GARNERED STAMPED
 - SANITARY NAPKIN DISPENSER - S-96000D-S
 - G.C. -
 - PARTIAL GLASS IN TO IN FLUSH WALL SYSTEM
2. PARTIAL GLAZING TO BE FLUSH WALL WITH STAINLESS STEEL CHANNEL FOR PERIMETER AND CORNERS, SEE DETAILS. GLAZING IN TO BE AS SCHEDULED BY GENERAL CONTRACTOR AND ACCEPTED BY OWNER.



REVISIONS

NO.	DATE	DESCRIPTION

LUSARDI
CONSTRUCT COMPANY

D²
DESIGN/BUILD & DEVELOPMENT
1275 GARDEN PARKWAY
SUITE 200
SERRAVALLE, CA 94085
(925) 325-9800

GERBER AMBULANCE SERVICE, INC.
3981 ALEXANDER LANNER RD.
FORT WAYNE, IN 46870

DATE: 3/16/11
SCALE: 3/16" = 1'-0"
DRAWN: LAG
JOB: 20-2004

A-2.2

Sheri Messerlian
Executive Vice President | 310.436.1762
smesserlian@naicapital.com | CalDRE #00450571

Ilmar Kalviste
Vice President | 310.878.6923
ikalviste@naicapital.com | CalDRE #01331187



FOR SALE



OFFICE BUILDING



13,790 SF



Google Earth

Image Landsat / Copernicus
Data SIO, NOAA, U.S. Navy, NGA, GEBCO
Data USGS
Data LDEO, NASA, NSF, NOAA

Sheri Messerlian

Executive Vice President | 310.436.1762
smesserlian@naicapital.com | CalDRE #00450571

Ilmar Kalviste

Vice President | 310.878.6923
ikalviste@naicapital.com | CalDRE #01331187



www.naicapital.com

©NAI CAPITAL COMMERCIAL, INC. CONTENT IN THIS DOCUMENT MAY INCLUDE AI GENERATED OR ALTERED TEXT, IMAGES AND/OR ANALYSIS. NO WARRANTY, EXPRESS OR IMPLIED, IS MADE AS TO THE ACCURACY OF THE INFORMATION CONTAINED HEREIN. THIS INFORMATION IS SUBMITTED SUBJECT TO ERRORS, OMISSIONS, CHANGE OF PRICE, RENTAL OR OTHER CONDITIONS, WITHDRAWAL WITHOUT NOTICE, AND IS SUBJECT TO ANY SPECIAL LISTING CONDITIONS IMPOSED BY OUR PRINCIPALS, COOPERATING BROKERS, BUYERS, TENANTS AND OTHER PARTIES WHO RECEIVE THIS DOCUMENT SHOULD NOT RELY ON IT, BUT SHOULD USE IT AS A STARTING POINT OF ANALYSIS, AND SHOULD INDEPENDENTLY CONFIRM THE ACCURACY OF THE INFORMATION CONTAINED HEREIN THROUGH A DUE DILIGENCE REVIEW OF THE BOOKS, RECORDS, FILES AND DOCUMENTS THAT CONSTITUTE RELIABLE SOURCES OF THE INFORMATION DESCRIBED HEREIN. UNEDITED IMAGES VIEWABLE AT NAICAPITAL.COM | CAL DRE LIC #02130474