

BUILDING SIGNAGE AVAILABLE

 **SHELTER  
INSURANCE**

35 86

3590

RETAIL SPACE FOR LEASE  
**3590 FISHINGER BLVD**

HILLIARD, OH

**Logan York**

Brokerage Associate  
+1 614 315 0389  
logan.york@alliedre.com

**Ryan McHugh**

Vice President  
+1 614 940 2978  
ryan.mchugh@alliedre.com

**Grant Hartman**

First Vice President & Partner  
+1 614 312 8163  
grant.hartman@alliedre.com



# Building Highlights

Allied Real Estate Advisors is pleased to present a unique retail opportunity at 3590 Fishingier Blvd., Located in the Mill Run area in immediate proximity of the restaurants, bars, hotels and other amenities of the area. The building is also located just off I-270 with easy access to Hilliard and Upper Arlington.

Additional highlights include:



Abundant on-site parking



Building and monument signage available on Fishingier Blvd. that sees over 16,200 VPD



Easy access to I-270



Direct entry suites



Across the street from Mill Run Square



3,861 SF Available



# Location Overview

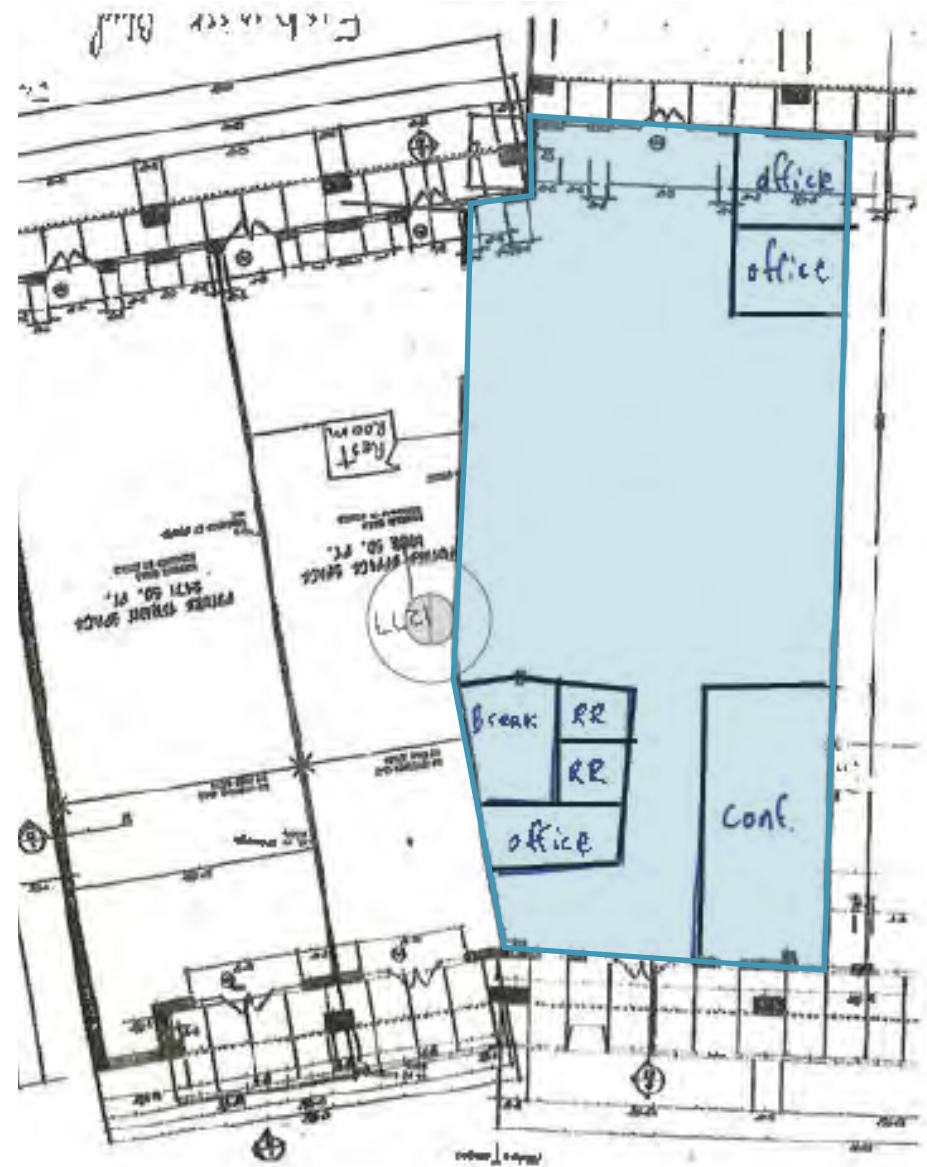
Located at 3590 Fishingier Blvd in Hilliard, OH, this property offers excellent accessibility in a highly visible and well-trafficked area. Situated just minutes from I-270 and Downtown Hilliard, it enjoys close proximity to national retailers, restaurants, and everyday conveniences including Meijer, ALDI, and LA Fitness. The surrounding area features ample surface parking, mature landscaping, and a well-established professional and retail presence, making it an ideal location for both office and medical users.



# Floor Plan

**3590 Fishinger - 3,861 SF**

\$16.50 PSF MG



Scan the QR code or [click here](#) to view a 360° property tour.





## Allied Real Estate Advisors

500 S Front St, Suite 980  
Columbus, OH 43215  
614 380 1660

### Logan York

Brokerage Associate  
+1 614 315 0389  
logan.york@alliedre.com

### Ryan McHugh

Vice President  
+1 614 940 2978  
ryan.mchugh@alliedre.com

### Grant Hartman

First Vice President & Partner  
+1 614 312 8163  
grant.hartman@alliedre.com