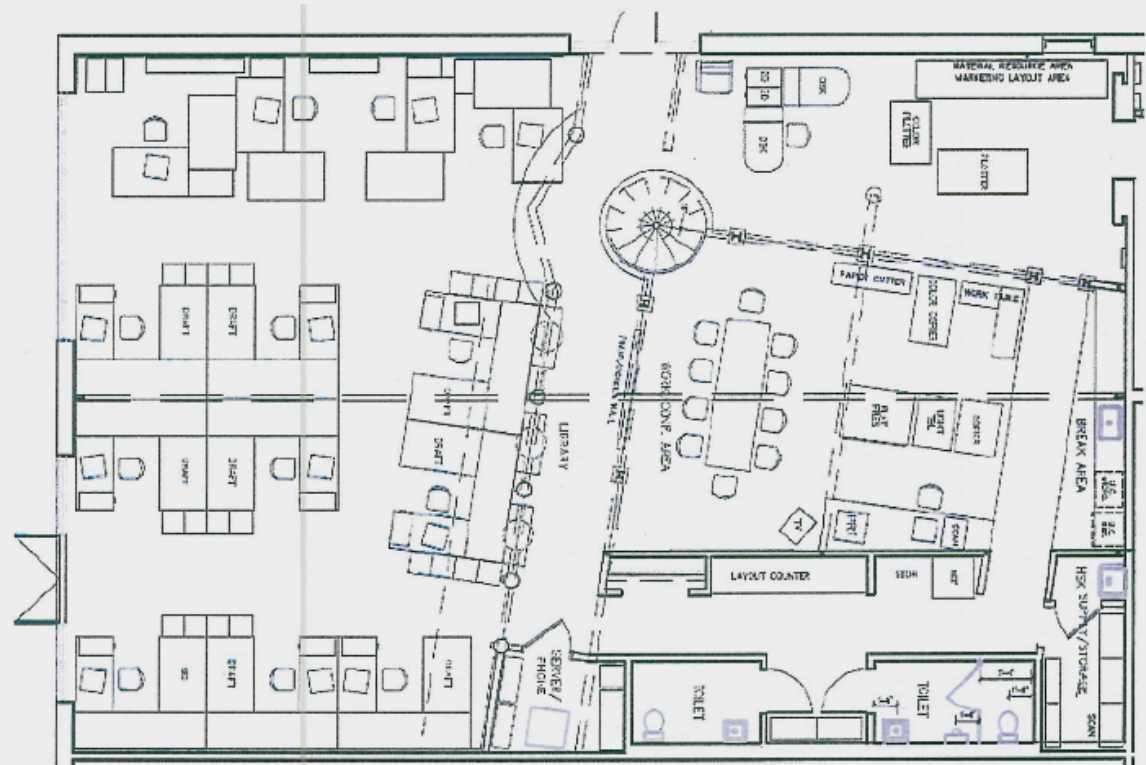


**3,500 SF OFFICE SPACE**  
1123 ZONOLITE RD | SUITE 30 | ATLANTA GA 30306

## 3,500 SF OFFICE SPACE AVAILABLE FOR LEASE

- Below Market Rental Rate
- Access to Zonolite Park and walking trails
- Outdoor space
- Private entrance
- Free Parking



### SCHEDULE A TOUR TODAY BY CONTACTING:

ELLIS MURRAY  
404.400.6633  
ellis.murray@capitalre.com

BENNETT GOTTLIEB  
404.400.7192  
bennett.gottlieb@capitalre.com

JOHN P. THORNTON  
404.400.7451  
john.thornton@capitalre.com

**1123  
ZONOLITE RD  
SUITE 30**