

AVAILABLE FOR LEASE

3605 Woodhead Drive, Unit 107
Northbrook, IL 60062

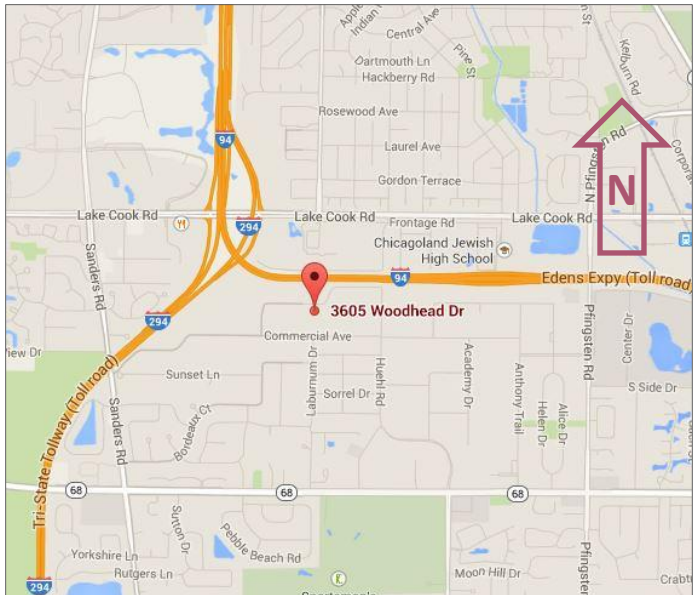


1,696 SF

OFFICE SPACE

\$17.00 PSF
GROSS

- 2,150 SF office suite available now in Sky Harbor Business Park!
- Large reception area, 6 private offices, conference room, IT/storage room, and kitchenette.
- Plenty of parking, 24 hour access, dog-friendly building
- Common area washrooms and lunchroom with vending machines
- Professionally managed by Key Investment & Management Inc.



**KEY INVESTMENT
& Management Inc.**

Office: 630.932.5757
Fax: 630.932.5755
1263 S. Highland Ave., Suite 2W,
Lombard, IL 60148
www.key-investment.com

FOR FURTHER INFORMATION CONTACT:

Kimberly Hess
Office: 630.932.5757 Fax: 630.932.5755
khess@key-investment.com

Real Estate

Brokerage

Leasing

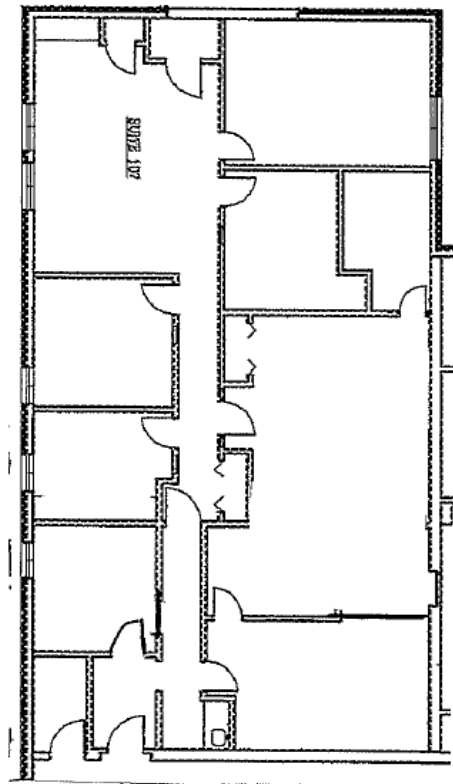
Management

3605 Woodhead Drive, Unit 107
Northbrook, IL 60062

1263 S. Highland Ave, Suite 2W
Lombard, IL 60148
Office: 630.932.5757 Ext.208 Fax: 630.932.5755
www.key-investment.com
Kimberly Hess
khess@key-investment.com



AVAILABLE FOR LEASE



PROPERTY SPECIFICATIONS

Building Size:	21,070
Available Space:	1,696 SF
Year Built:	1972
Zoning:	C3
Parking:	Open Lot
Ceiling Height:	8'
Power:	200 AMP
Washrooms:	Common Area
Sprinklered:	No
Utilities:	Gas & Electric
Real Estate Taxes:	Included
CAM:	Included
Possession:	Immediately
Lease Term:	Minimum 2 year
Lease Rate:	\$17.00 PSF \$2,403/Mo

All dimensions are approximate. Drawing not to scale.



Follow us on
Linked in

1/19/2026

Real Estate

Brokerage

Leasing

Management