



4637 Allen Rd
Stow, Ohio 44224

LEASE RATE **\$7.50/SF/NNN**

AVAILABLE SQ FT **63,904**

ACRES **7.28**

PARCELS **5618781**

YEAR BUILT **2005**

OH DOORS / DOCKS **2 / 6**

CLEAR HEIGHT **24' +/-**

POWER **3P/400A/480v**



Property Features

- 63,904/SF building with ESFR sprinklers, 6 loading docks, and 2 overhead doors.
- Secure fenced and covered outdoor storage area.
- 5,170/SF office / 58,734/SF warehouse
- Great location with immediate access to Route 8 with easy access to major highways including I-77.
- Strategically located close to Akron/Cleveland markets.

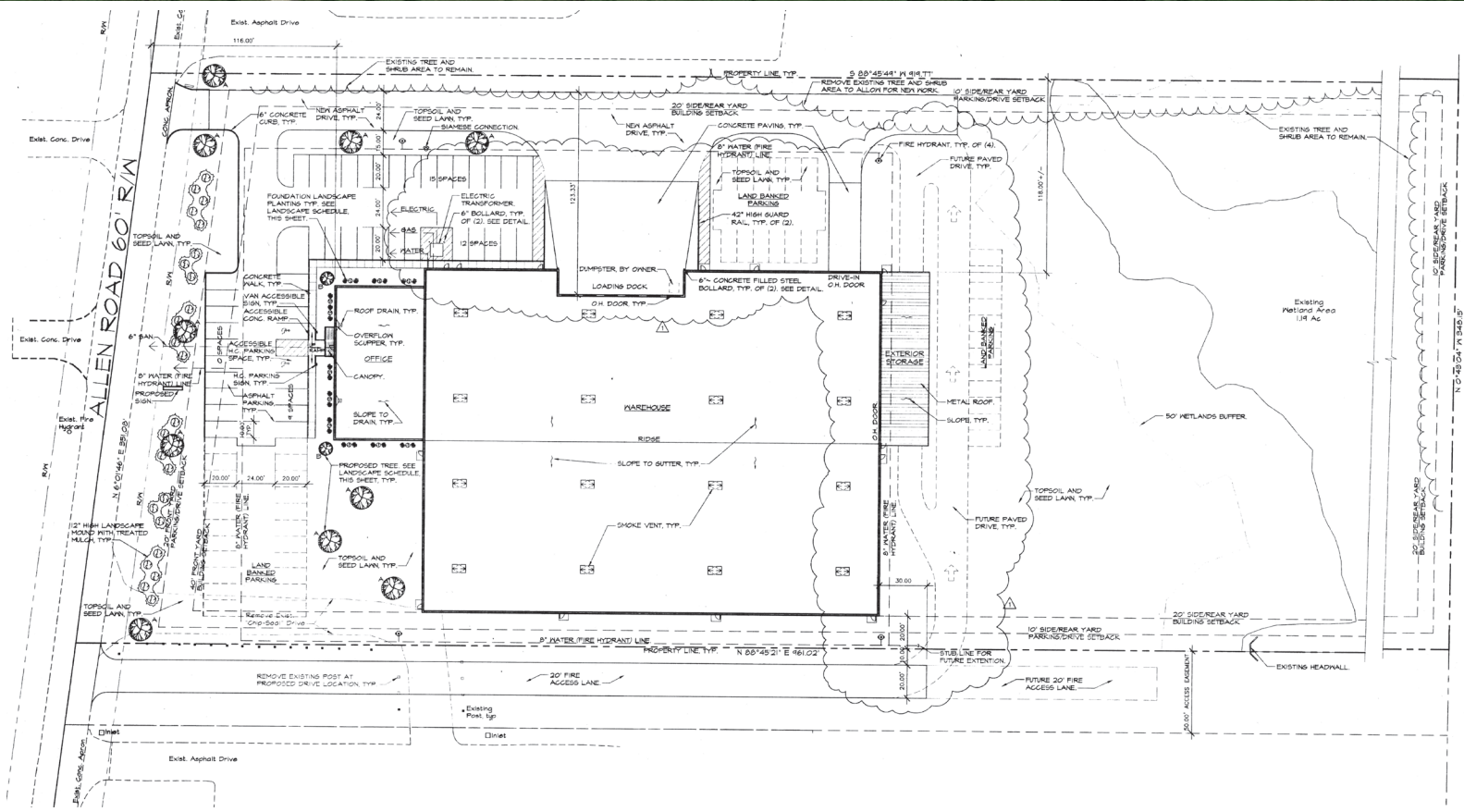
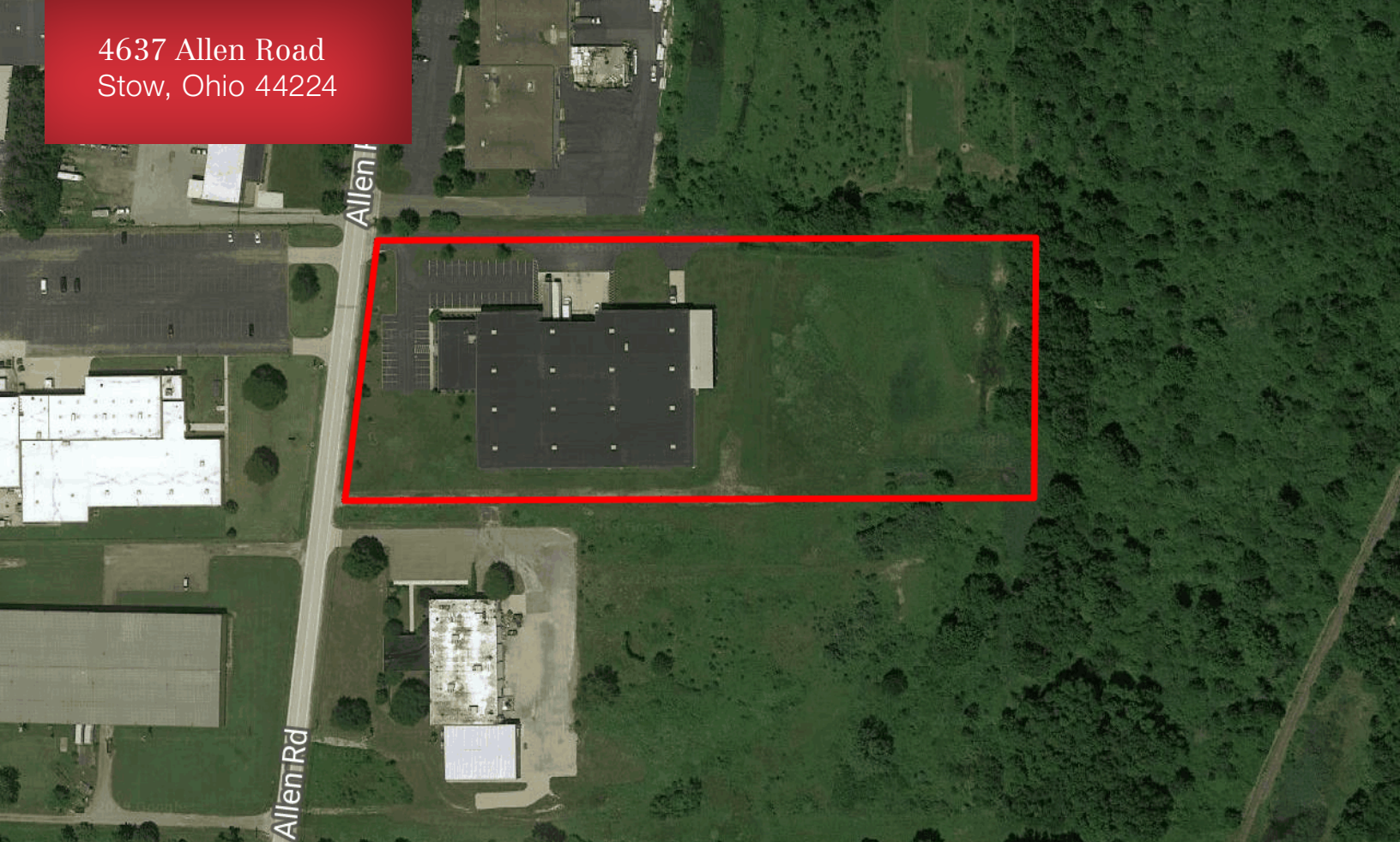
Dan Spring, SIOR

P 330 497 6249
dan@naispring.com

Kelly Sober, CCIM

P 330 497 9837
kelly@naispring.com

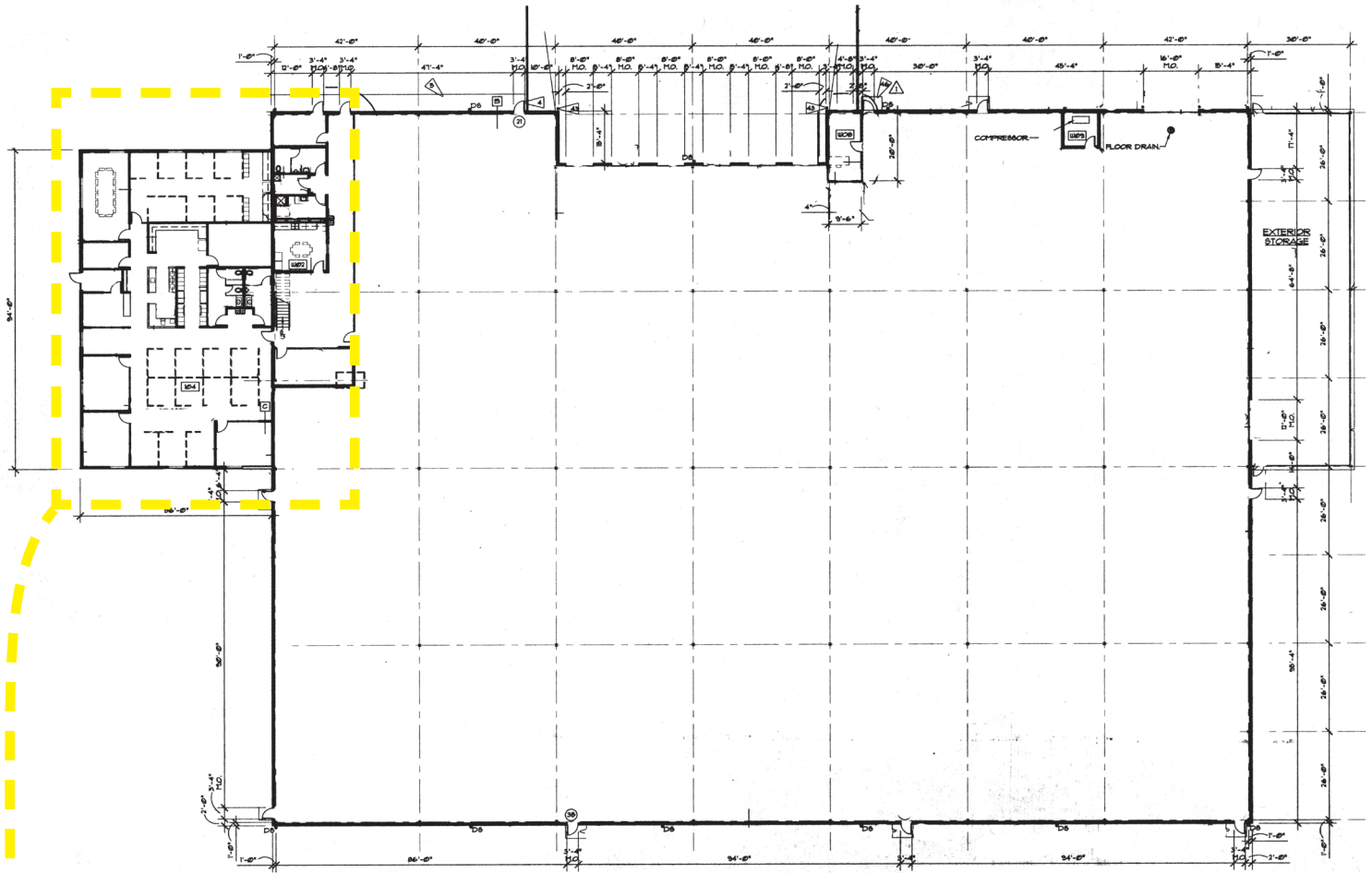
4637 Allen Road
Stow, Ohio 44224



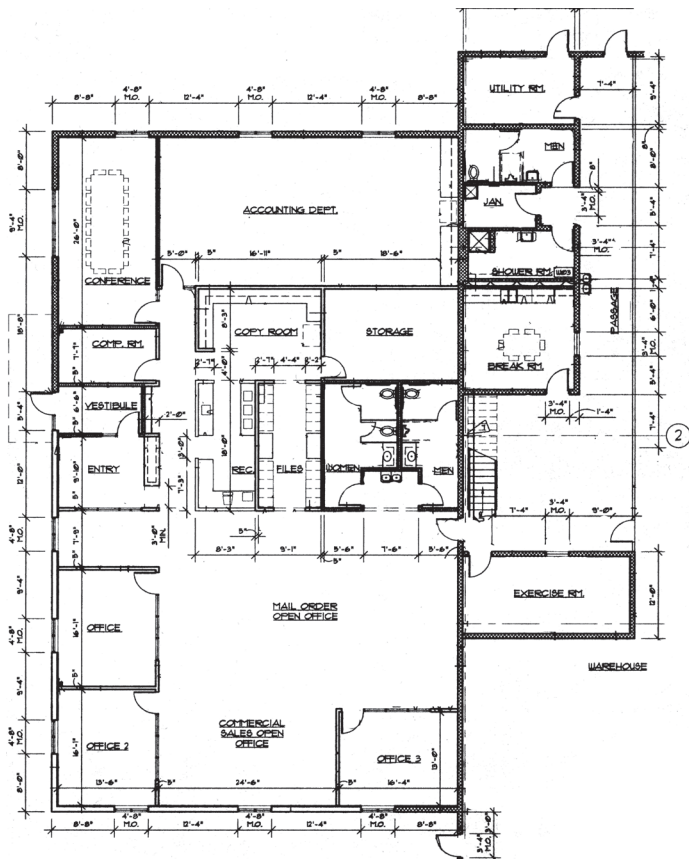
*DIMENSIONS ARE APPROXIMATE. THIS INFORMATION IS FROM RELIABLE SOURCES BUT IS NOT GUARANTEED AND IS SUBJECT TO CHANGE

NO WARRANTY OR REPRESENTATION, EXPRESS OR IMPLIED, IS MADE AS TO THE ACCURACY OF THE INFORMATION CONTAINED HEREIN, AND THE SAME IS SUBMITTED SUBJECT TO ERRORS, OMISSIONS, CHANGE OF PRICE, RENTAL OR OTHER CONDITIONS, PRIOR SALE, LEASE OR FINANCING, OR WITHDRAWAL WITHOUT NOTICE, AND OF ANY SPECIAL LISTING CONDITIONS IMPOSED BY OUR PRINCIPALS NO WARRANTIES OR REPRESENTATIONS ARE MADE AS TO THE CONDITION OF THE PROPERTY OR ANY HAZARDS CONTAINED THEREIN ARE ANY TO BE IMPLIED.

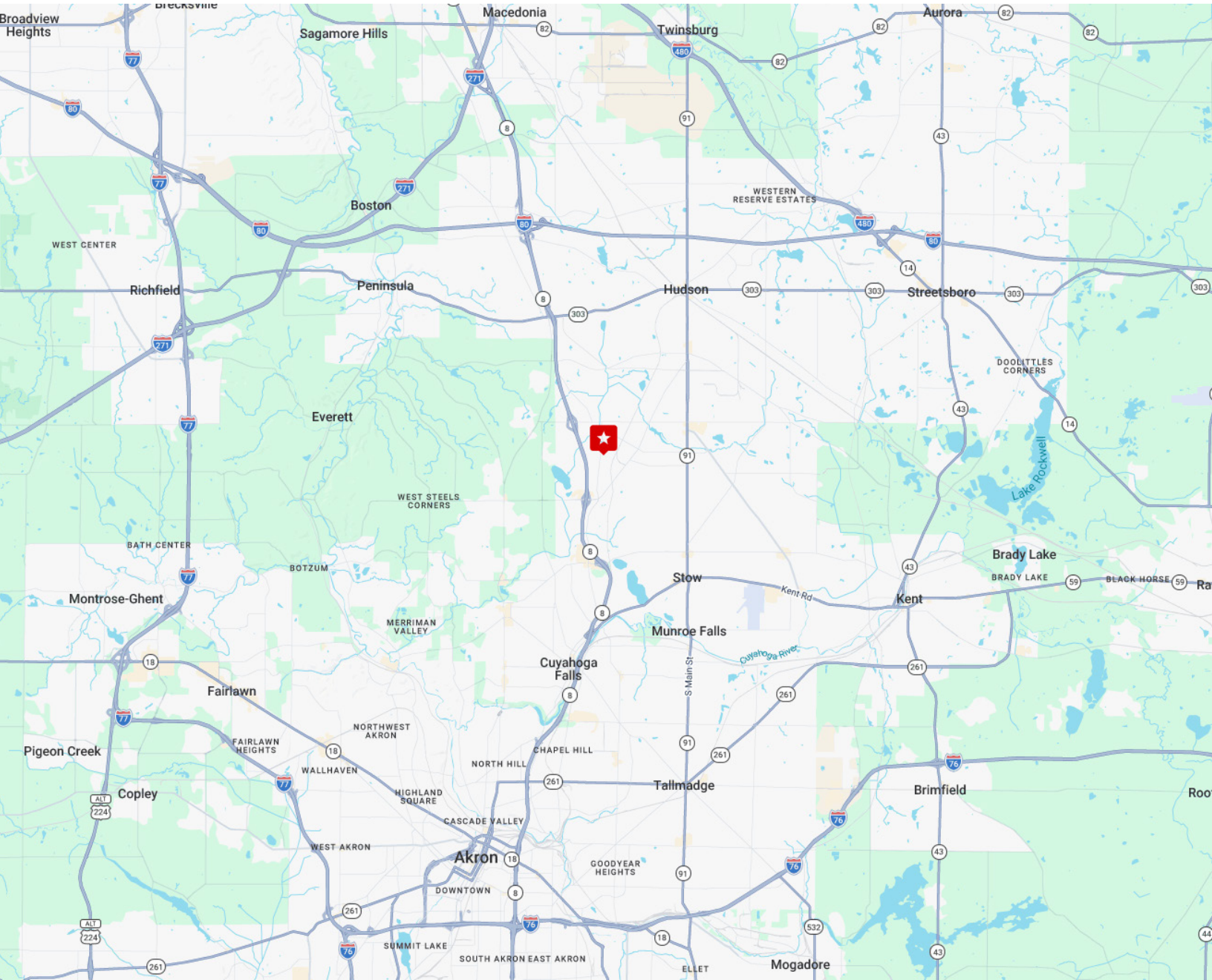
8234 Pittsburg Ave NW
North Canton, OH 44720
+1 330 966 8800
naispring.com



OFFICE



4637 Allen Road
Stow, Ohio 44224



NO WARRANTY OR REPRESENTATION, EXPRESS OR IMPLIED, IS MADE AS TO THE ACCURACY OF THE INFORMATION CONTAINED HEREIN, AND THE SAME IS SUBMITTED SUBJECT TO ERRORS, OMISSIONS, CHANGE OF PRICE, RENTAL OR OTHER CONDITIONS, PRIOR SALE, LEASE OR FINANCING, OR WITHDRAWAL WITHOUT NOTICE, AND OF ANY SPECIAL LISTING CONDITIONS IMPOSED BY OUR PRINCIPALS NO WARRANTIES OR REPRESENTATIONS ARE MADE AS TO THE CONDITION OF THE PROPERTY OR ANY HAZARDS CONTAINED THEREIN ARE ANY TO BE IMPLIED.

8234 Pittsburg Ave NW
North Canton, OH 44720
+1 330 966 8800
naispring.com