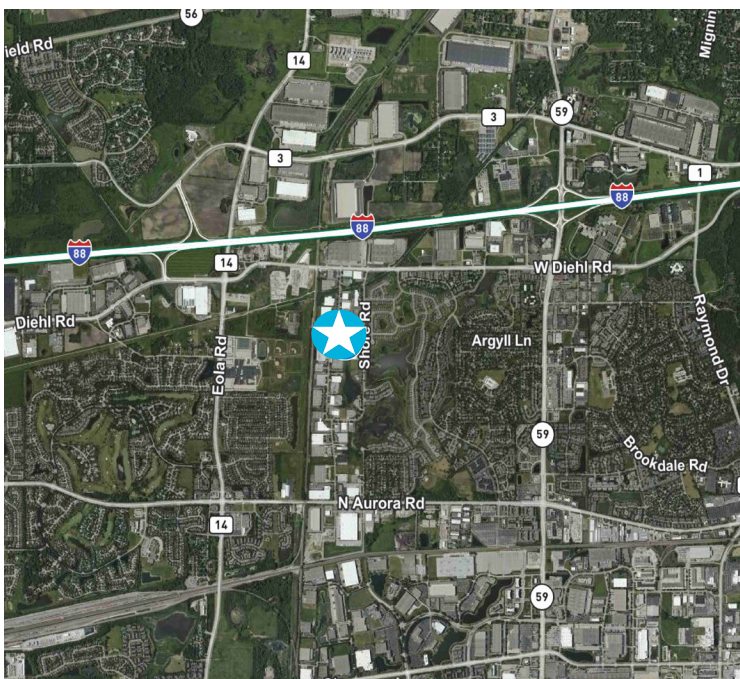


2768 Golfview Drive Naperville, IL

14,979 SF Available For Sale

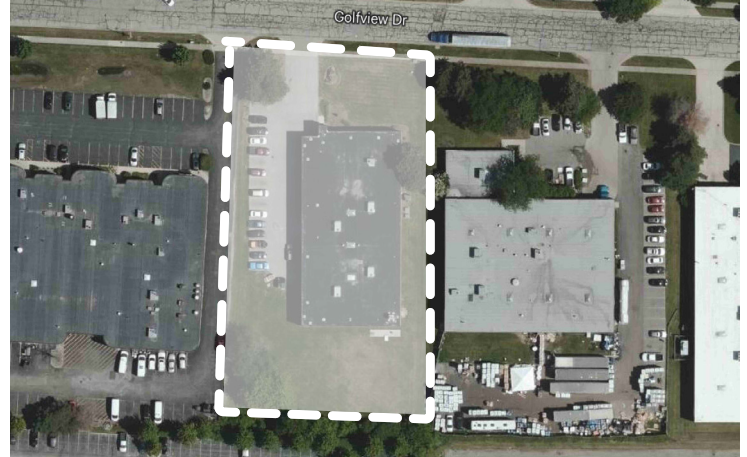


Property Specifications

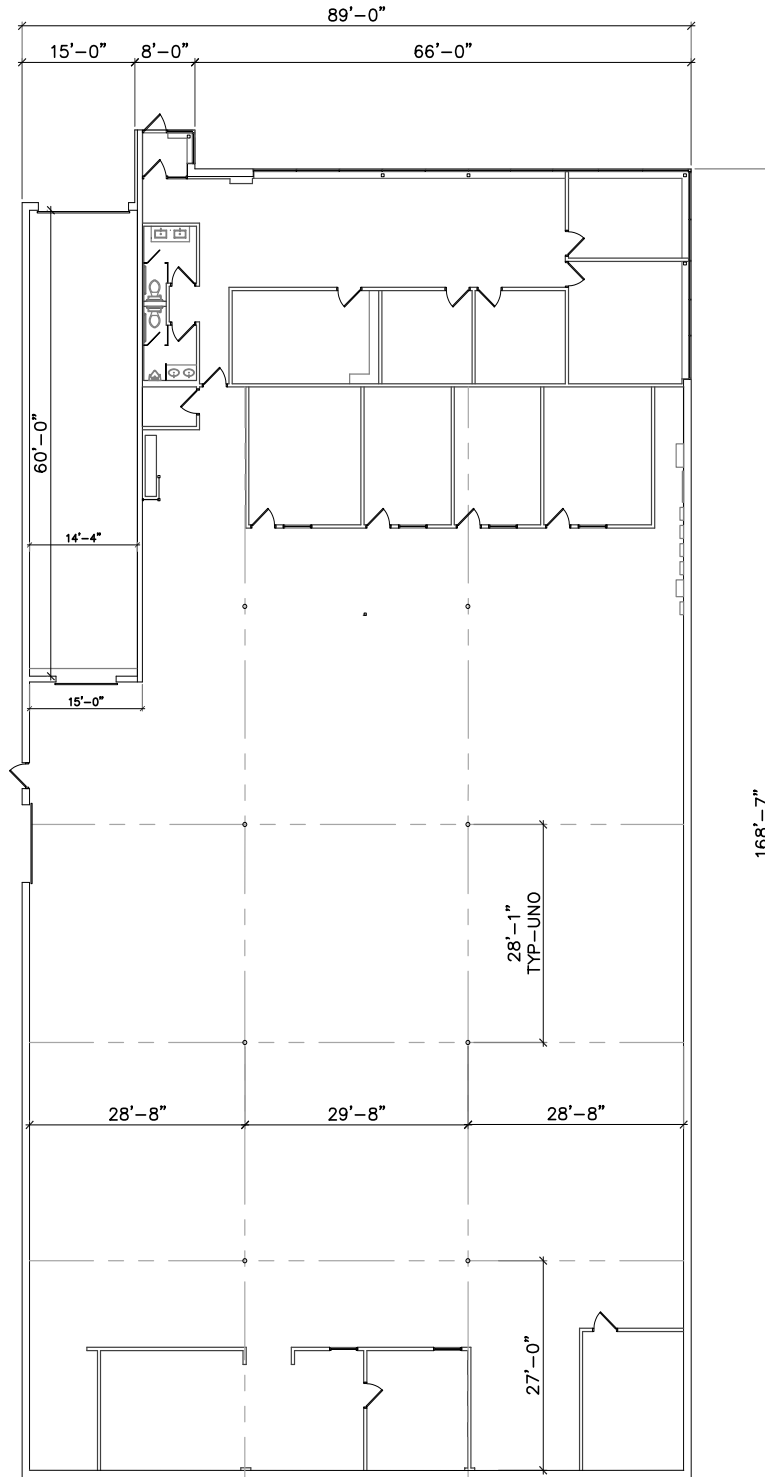
Site Size	1.26-acres
Building Size	14,979 SF
Office Size	3,929 SF
Loading	1 interior dock 1 drive-in door
Ceiling Height	16' clear
Power	2,000 amps, 3-phase
HVAC	Fully air-conditioned
Asking Sale Price	Subject to offer

Highlights

- Immediate access to I-88 and IL-Rte. 59
- Fully air-conditioned
- Heavy power with multiple services
- Potential for outside storage or building expansion



Site Plan



Contact Us

Clayton Thorson
Associate
+1 630 344 2560
clayton.thorson@cbre.com

Matt Mulvihill
Vice Chairman
+1 312 493 5522
matt.mulvihill@cbre.com

© 2026 CBRE, Inc. All rights reserved. This information has been obtained from sources believed reliable, but has not been verified for accuracy or completeness. You should conduct a careful, independent investigation of the property and verify all information. Any reliance on this information is solely at your own risk. CBRE and the CBRE logo are service marks of CBRE, Inc. All other marks displayed on this document are the property of their respective owners, and the use of such logos does not imply any affiliation with or endorsement of CBRE. Photos herein are the property of their respective owners. Use of these images without the express written consent of the owner is prohibited.

