



Accelerating success

FOR LEASE

Lease rate:

\$16.75

PSF, FS

Contact us:

Graham Gordon

+1 501 978 6503

graham.gordon@ar.colliers.com

Todd Rice, CCIM

+1 501 850 0702

todd.rice@ar.colliers.com

1 Allied Drive, Suite 1500,
Little Rock, AR 72202
P: +1 501 372 6161
colliers.com/arkansas

1020 West 4th Street, Little Rock, AR

For Lease: AFMC Office Building 5th Floor

Features

- 11,206 SF available (may be subdivided)
- Full floor availability
- Generous on-site parking
- Fiber optics in building
- Lease rate: \$16.75/SF, full service

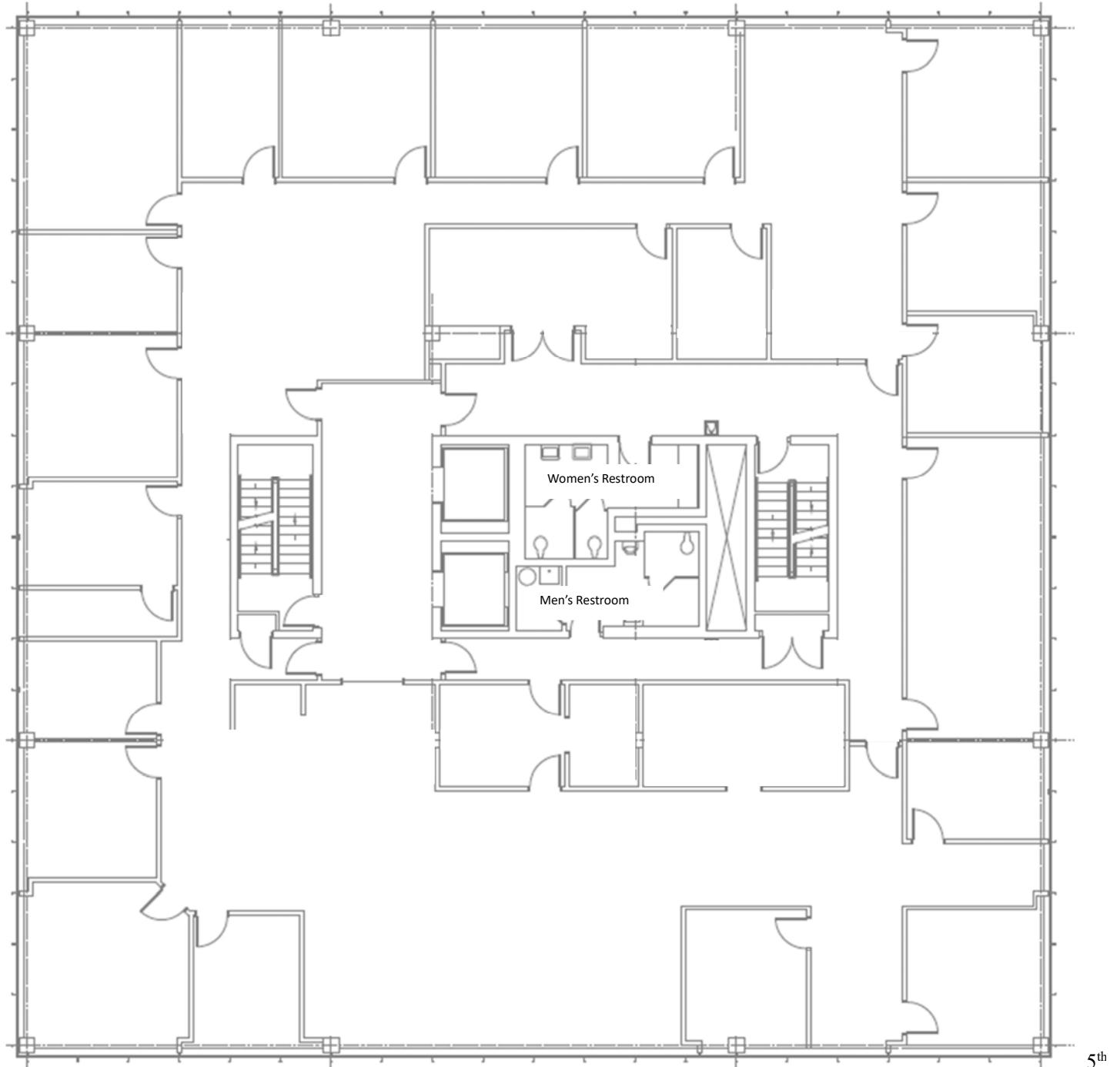
Copyright © 2021 Colliers International.

Information herein has been obtained from sources deemed reliable, however its accuracy cannot be guaranteed. The user is required to conduct their own due diligence and verification.

5th Floor Plan

Colliers

TOTAL SIZE: 11,206 SF



5th

CONTACT US:

Todd Rice, CCIM
+1 501 850 0702
todd.rice@ar.colliers.com

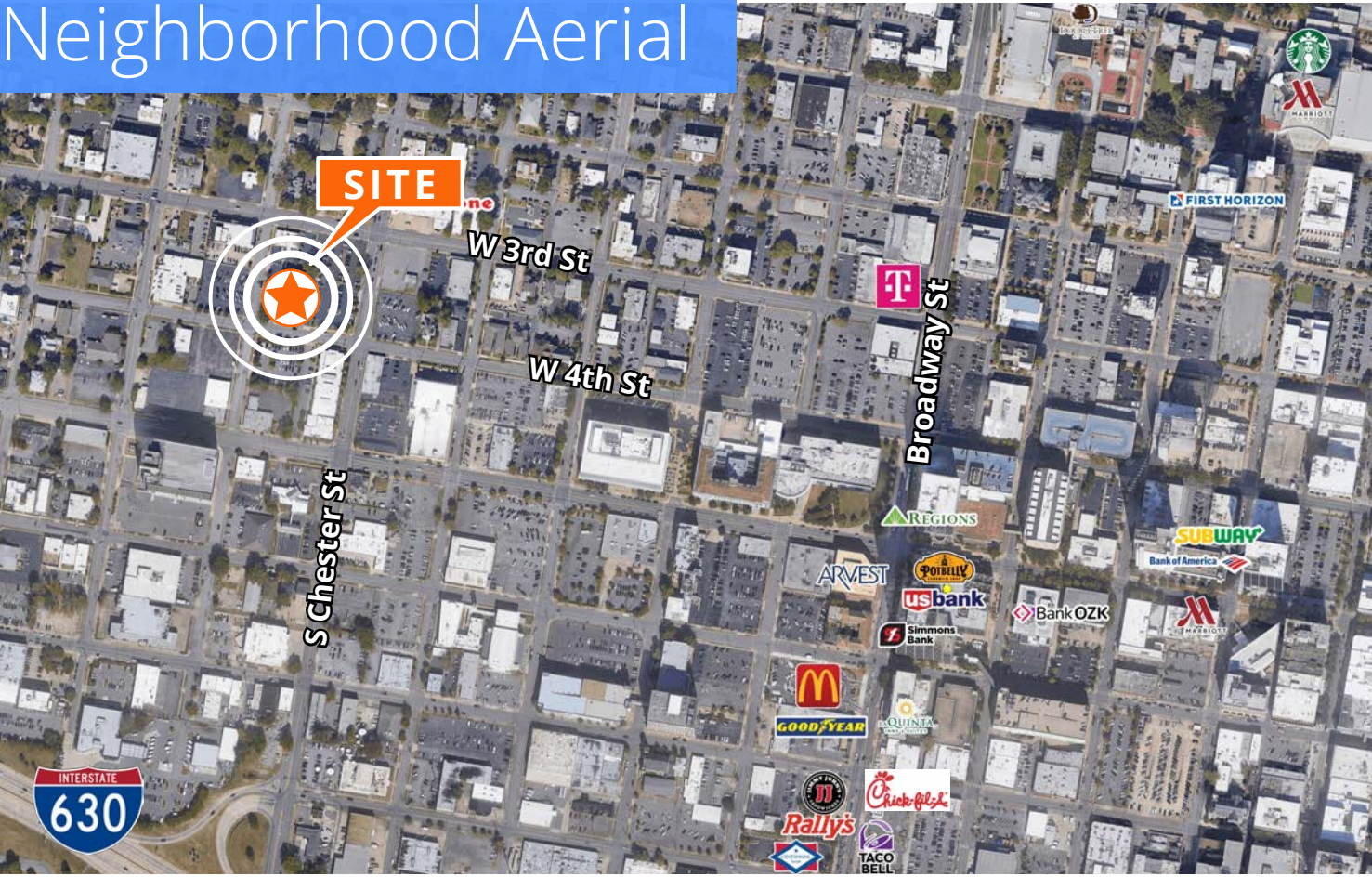
Graham Gordon
+1 501 978 6503
graham.gordon@ar.colliers.com

1 Allied Drive, Suite 1500,
Little Rock, AR 72202
P: +1 501 372 6161
colliers.com/arkansas

Parking Aerial



Neighborhood Aerial



Property Photos

Colliers

