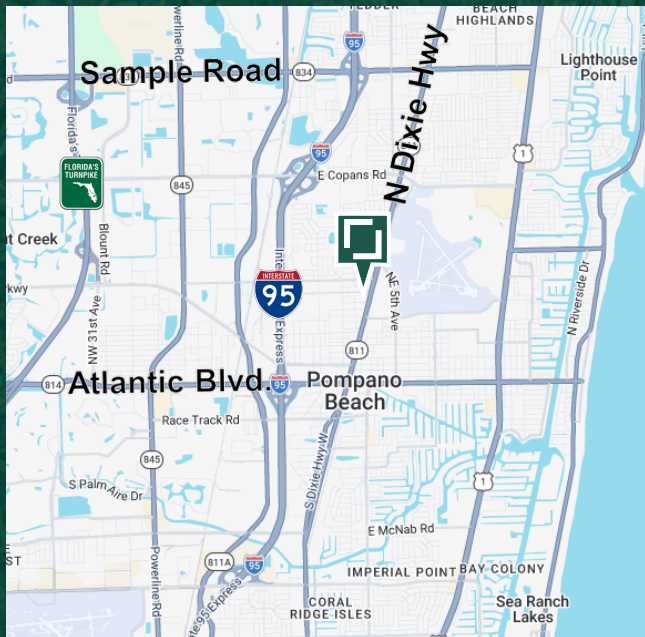


Airpark Commerce Center



1241 – 1251 N Dixie Highway, Pompano Beach, FL 33060

For Lease



HIGHLIGHTS

- 1,200 SF - 3,600 SF Units available
- In-Unit Office & Restroom
- Immediate Occupancy
- Asking Rent: \$23.65 / SF (MG)
- 15' Clear Height
- Parking Ratio: 2 per 1,000 SF
- 10' x 12' Grade-Level Loading Doors
- Direct frontage and signage opportunities on Dixie Highway
- Zoning: Heavy Business (B-4)
- Located on Dixie Highway, less than a mile east of I-95, between Copans Road and Atlantic Boulevard

Rowan Gilbert

954.292.2788

RGilbert@BergerCommercial.com

Calder Alfano

954.652.2041

CAlfano@BergerCommercial.com

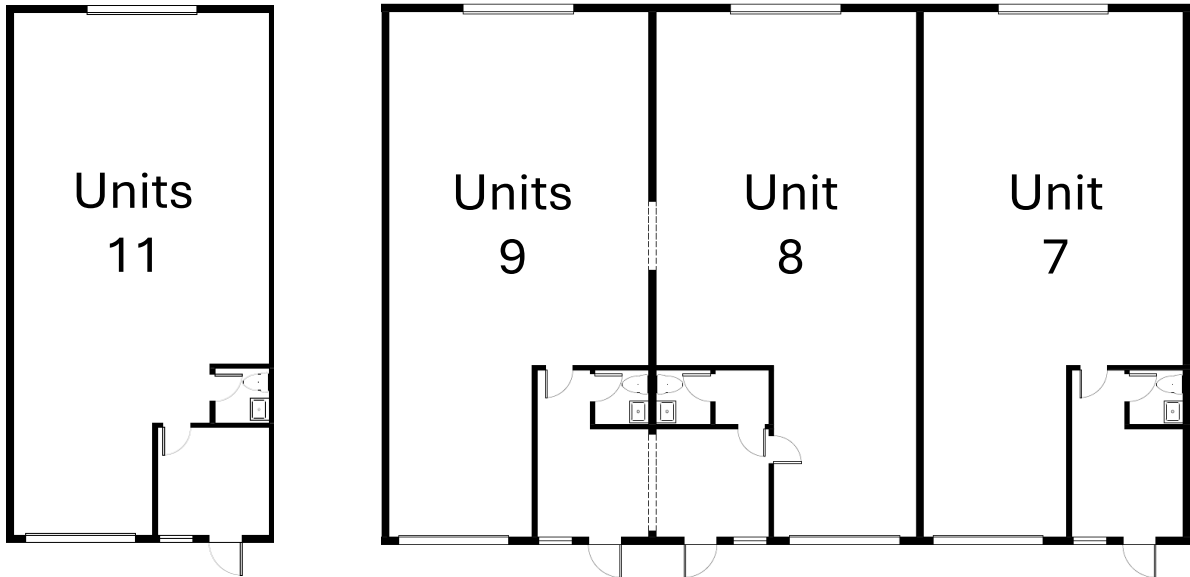


COMMERCIAL BROKERAGE AND PROPERTY MANAGEMENT

Space Plan

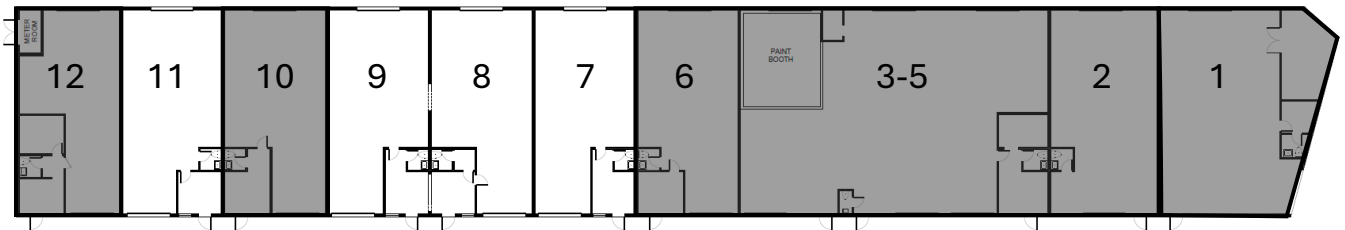
1241 – 1251 N Dixie Highway, Pompano Beach, FL 33060

Available Units



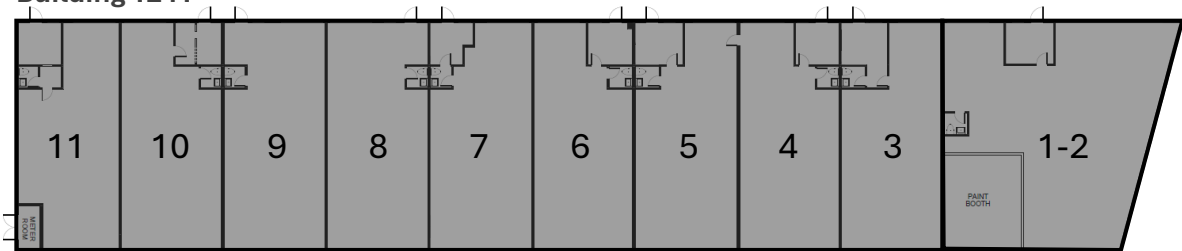
Building 1251

Park Plan



■ Leased □ Available

Building 1241



Rowan Gilbert

954.292.2788

RGilbert@BergerCommercial.com

Calder Alfano

954.652.2041

CAlfano@BergerCommercial.com



COMMERCIAL, INDUSTRIAL AND PROPERTY MANAGEMENT

Planned Renovations

1241 – 1251 N Dixie Highway, Pompano Beach, FL 33060

Current



Planned



Rowan Gilbert

954.292.2788

RGilbert@BergerCommercial.com

Calder Alfano

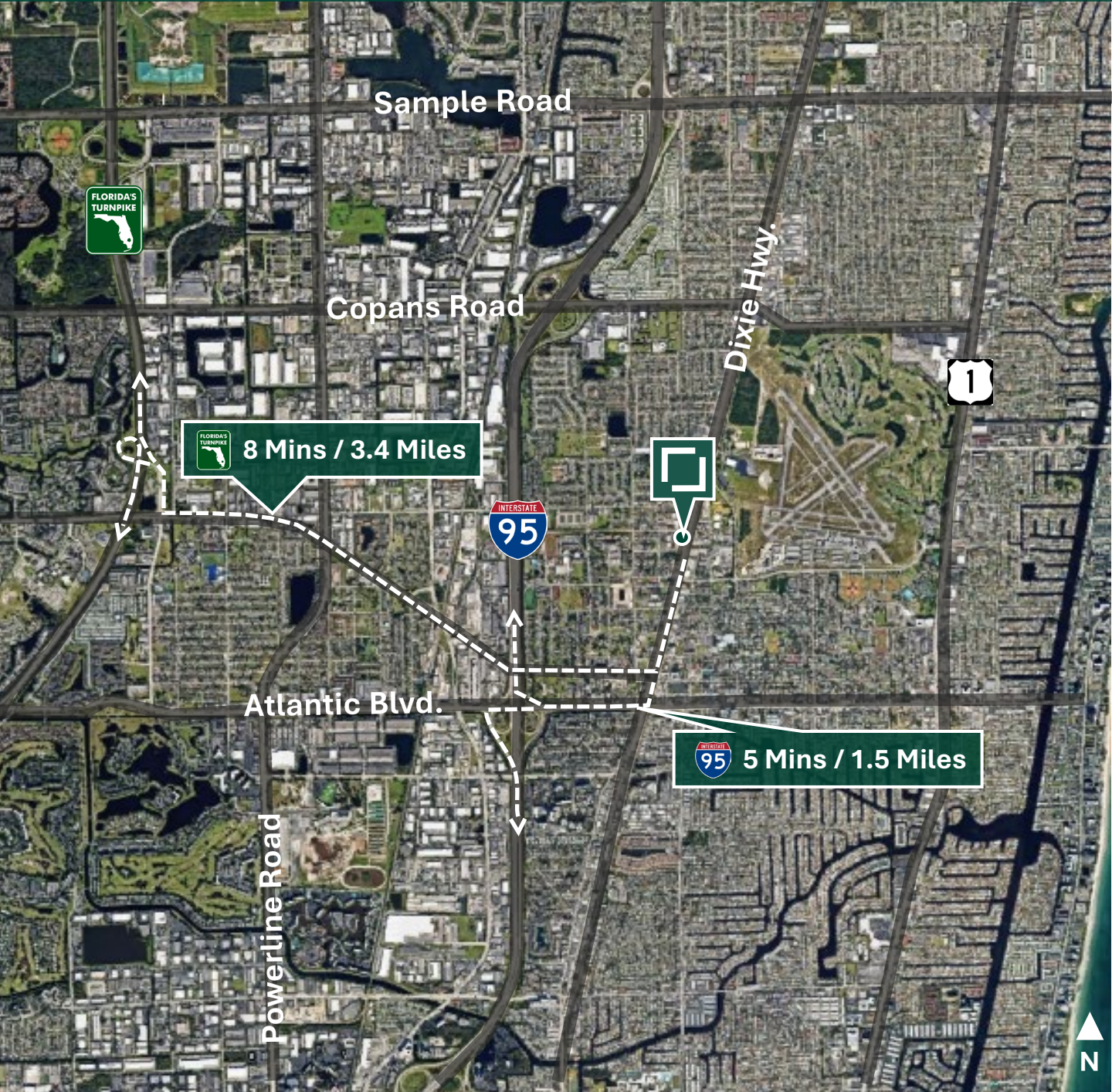
954.652.2041

CAlfano@BergerCommercial.com

Access Map



1241 – 1251 N Dixie Highway, Pompano Beach, FL 33060



Rowan Gilbert
954.292.2788
RGilbert@BergerCommercial.com

Calder Alfano
954.652.2041
CAlfano@BergerCommercial.com



COMMERCIAL, INDUSTRIAL AND PROPERTY MANAGEMENT