

# FOR LEASE | Fully Built, Fully Ready: 3,200—4,700 SF of Opportunity

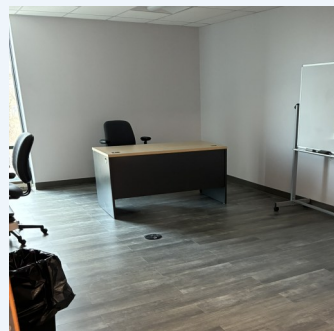
## MOVE-IN READY OFFICE SPACE FOR LEASE

335 Broad Street, 2nd Floor  
Manchester, CT 06040

Modern. Clean. Convenient. Discover a professional, fully built-out office environment at 335 Broad Street. Perfectly suited for a growing business or a professional practice, this suite offers a seamless transition with zero downtime.



## OVERVIEW



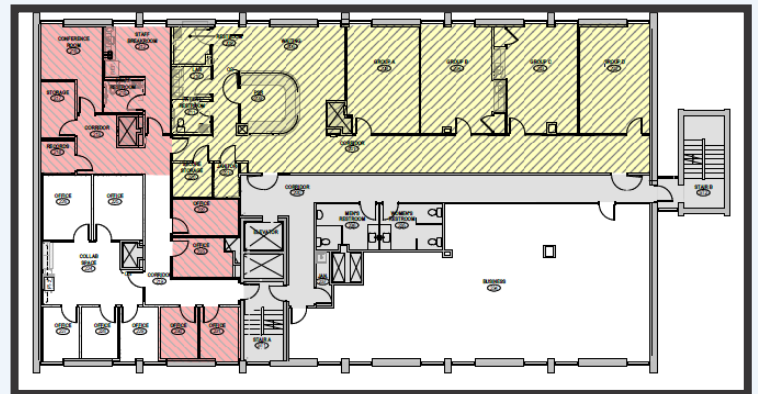
## PROPERTY HIGHLIGHTS

**Size:** 3,200—4,700 SF (2nd Floor)

**Condition:** Clean, vacant, and fully built-out for immediate occupancy.

**Amenities:** In-suite **kitchen** and **private restrooms** for exclusive use.

**Layout:** Efficient floor plan designed for modern workflows.



## LOCATION & ACCESSIBILITY

Experience the convenience of a Manchester address with rapid access to the entire Greater Hartford region.

**Prime Transit:** Seconds away from **Middle Turnpike W** and **Route 6**.

**Commuter Friendly:** Located just minutes from **Downtown Hartford**.

**Walkable Perks:** Surrounded by essential amenities including **retail shopping**, **grocery stores**, and **business services**.

## CONTACT DETAILS

PHOEBE KY | 860-313-5400 X 145 | PHOEBE@F8PROPERTIES.COM | WWW.F8PROPERTIES.COM

