

±29,800 SQ FT

Freestanding, clean technology/
manufacturing space



250 Hillside Blvd

SOUTH SAN FRANCISCO, CA

CONTACTS

Marshall Hydorn

Lic. 00960660

(650) 577-2990

marshall.hydorn@cbre.com

David Black

Lic. 00687895

(650) 577-2992

david.black@cbre.com

Matt Murray

Lic. 02083830

(650) 577-2934

matt.murray@cbre.com

CBRE

Property Highlights

ASKING: \$1.65/SF NNN
OPEX: \$0.27/SF MONTH



±29,800 SF total



±8,500 SF office/lab space



Dock-high doors:
one (1) recessed loading positions



Grade-level loading: one (1)



Power: 1600amps @480v 3-phase 4w



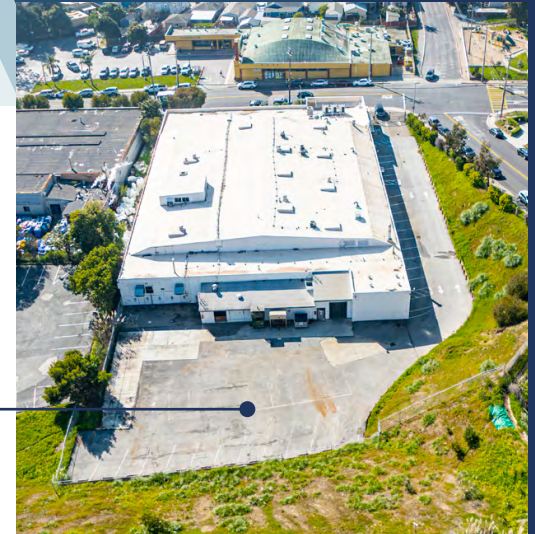
20' Clear height



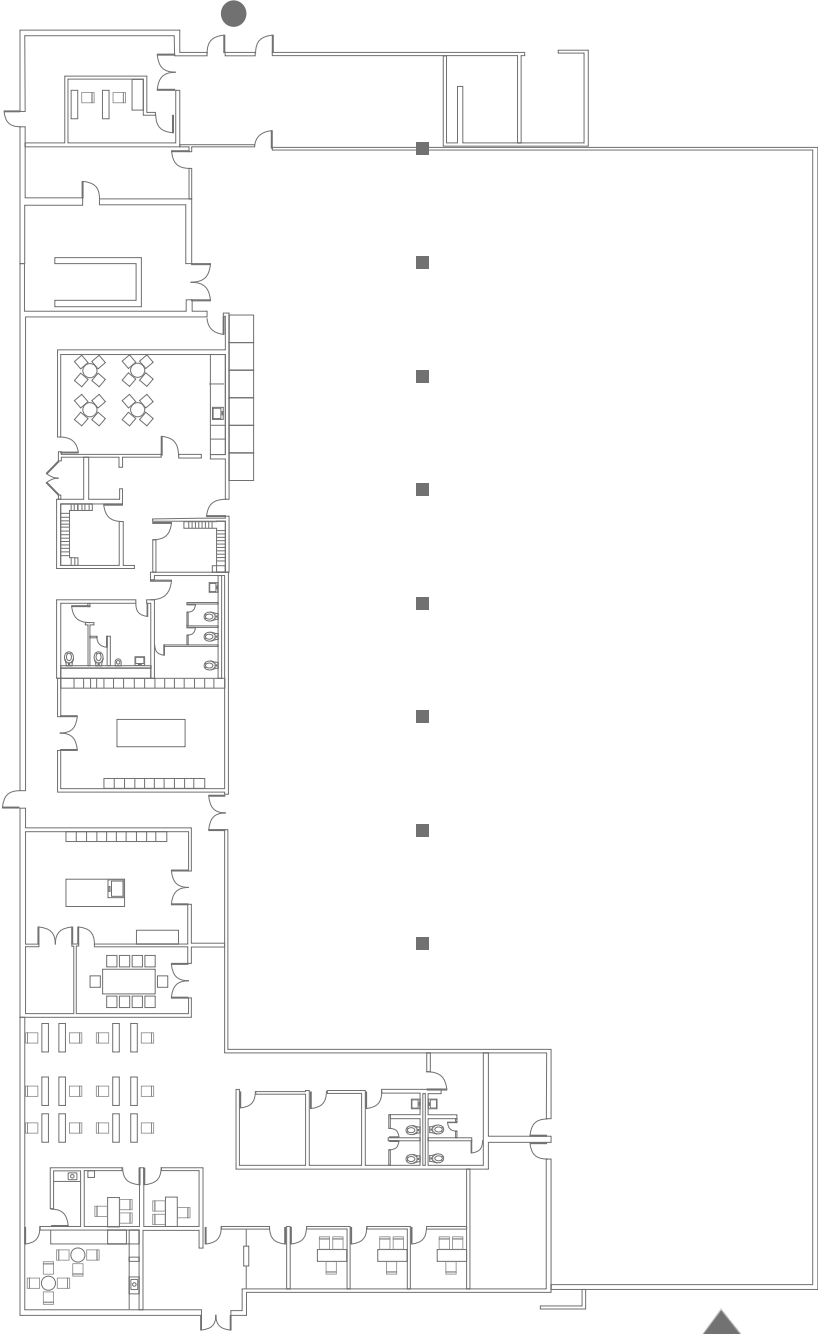
Parking: 37 striped stalls



Standalone building with nicely improved offices



Floor Plan



▼ DOCK-HIGH DOOR
● GRADE-LEVEL DOOR

HILLSIDE BLVD

Office Photos



Warehouse Photos



250 Hillside Blvd

SOUTH SAN FRANCISCO, CA

250 Hillside Blvd
SOUTH SAN FRANCISCO, CA



Airport Blvd



Grand Ave



Oyster Point
Marina



Caltrain:
1 mile



SFO:
5 minutes



Downtown San Francisco:
20 minutes

CONTACTS

Marshall Hydorn

Lic. 00960660

(650) 577-2990

marshall.hydorn@cbre.com

David Black

Lic. 00687895

(650) 577-2992

david.black@cbre.com

Matt Murray

Lic. 02083830

(650) 577-2934

matt.murray@cbre.com

CBRE

© 2026 CBRE, Inc. All rights reserved. This information has been obtained from sources believed reliable but has not been verified for accuracy or completeness. CBRE, Inc. makes no guarantee, representation or warranty and accepts no responsibility or liability as to the accuracy, completeness, or reliability of the information contained herein. You should conduct a careful, independent investigation of the property and verify all information. Any reliance on this information is solely at your own risk. CBRE and the CBRE logo are service marks of CBRE, Inc. All other marks displayed on this document are the property of their respective owners, and the use of such marks does not imply any affiliation with or endorsement of CBRE. Photos herein are the property of their respective owners. Use of these images without the express written consent of the owner is prohibited.