

**PRICE
REDUCTION**

**BERKSHIRE
HATHAWAY**
HOMESERVICES | UTAH
PROPERTIES

COMMERCIAL DIVISION



FABULOUS OFFICE SPACE ON PARK CITY MAIN STREET

OLD TOWN 309 MAIN STREET | PARK CITY, UTAH 84060

\$43.00/SF
~~\$45.00/SF~~ NNN | CAM \$8.86/SF

JILL SNYDER
(435) 671-0793
jill@utahcre.com

TODD McLACHLAN
(801) 520-9005
todd@utahcre.com

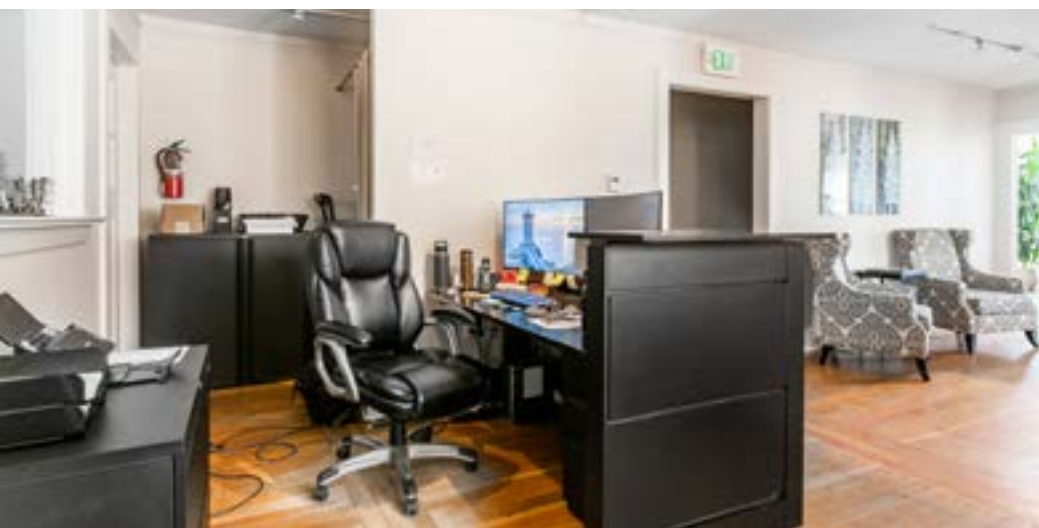
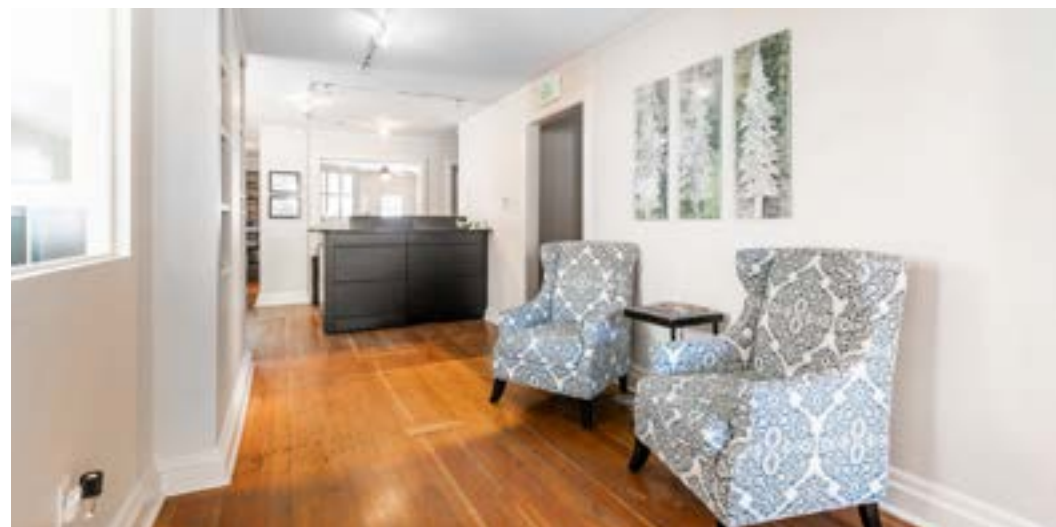
CHELSEA WALL
(435) 671-3541
chelsea@utahcre.com

- 1,500 SF
- High visibility and foot traffic
- Convenient access to transportation
- Picturesque views
- Versatile office space w/modern amenities

© 2025 BHH Affiliates, LLC. An independently owned and operated franchisee of BHH Affiliates, LLC. Berkshire Hathaway HomeServices and the Berkshire Hathaway HomeServices symbol are registered service marks of Columbia Insurance Company, a Berkshire Hathaway affiliate. Equal Housing Opportunity. Information not verified or guaranteed. Berkshire Hathaway HomeServices and/or its representatives do not warrant or guarantee this information. Information herein was provided by Owner/Seller. Lessee/Purchaser is responsible to confirm any information considered a factor in a decision to lease or purchase.

PROPERTY PHOTOS

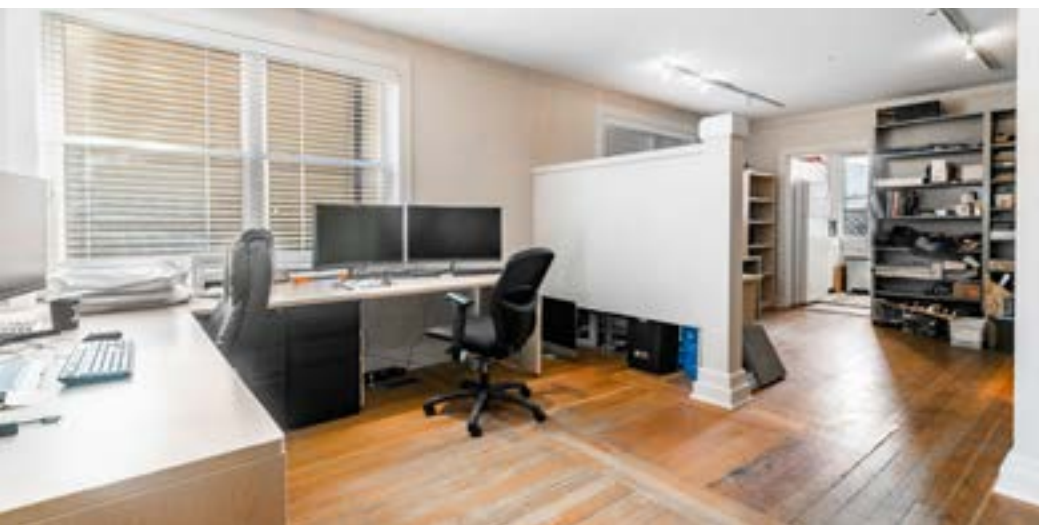
OLD TOWN 309 MAIN STREET | PARK CITY, UTAH 84060





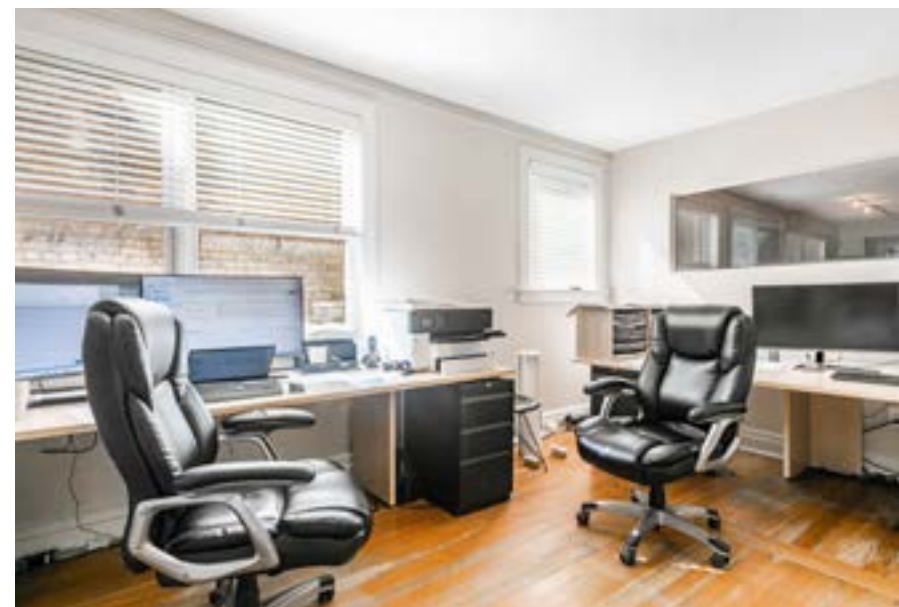
PROPERTY PHOTOS

OLD TOWN 309 MAIN STREET | PARK CITY, UTAH 84060



PROPERTY PHOTOS

OLD TOWN 309 MAIN STREET | PARK CITY, UTAH 84060



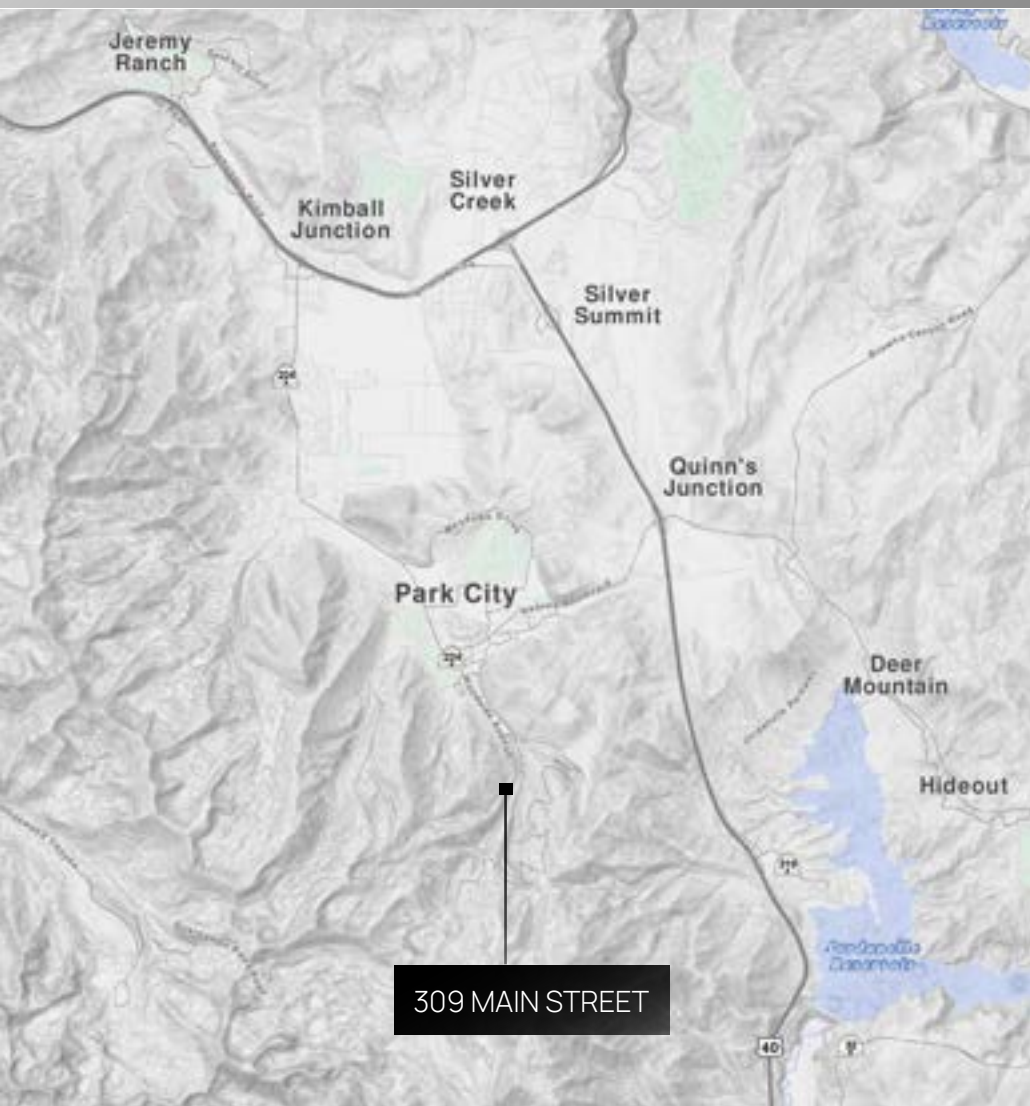
FLOOR PLANS

OLD TOWN 309 MAIN STREET | PARK CITY, UTAH 84060



LOCATION

OLD TOWN 309 MAIN STREET | PARK CITY, UTAH 84060





OLD TOWN

309 MAIN STREET

PARK CITY, UTAH 84060

- Situated on Main Street, the heart of Park City, offering high visibility and foot traffic, ideal for businesses looking to establish a presence in a busy area.
- Convenient access to public transportation, parking facilities, and major highways, ensuring ease of commute for employees and clients alike.
- Enjoy picturesque views of Park City's charming surroundings from the second-floor vantage point with 1,500 square feet. Including 5 offices, kitchen, bathroom and a large workspace. Providing an inspiring and pleasant work environment.
- The office space boasts versatility, suitable for a variety of businesses such as tech startups, creative agencies, law firms, or consultancy services.
- Equipped with modern amenities including high-speed internet connectivity, HVAC systems, and adequate lighting, fostering a comfortable and productive workspace.
- Surrounded by an array of amenities including restaurants, cafes, retail shops, Park City Mountain Resort and recreational facilities, offering convenience and enhancing the overall work-life balance for employees.

i

BHHSUTAH.COM

JILL SNYDER
(435) 671-0793
jill@utahcre.com

TODD McLACHLAN
(801) 520-9005
todd@utahcre.com

CHELSEA WALL
(435) 671-3541
chelsea@utahcre.com

**BERKSHIRE
HATHAWAY**
HOMESERVICES

UTAH
PROPERTIES

COMMERCIAL DIVISION