

FOR LEASE

1,500 SF | \$1.10/SF/MO. NNN

Small Northeast Bend Industrial Space

62980 Boyd Acres Road, D8, Bend, OR 97701



PHOTO OF SIMILAR UNIT



PHOTO OF SIMILAR UNIT

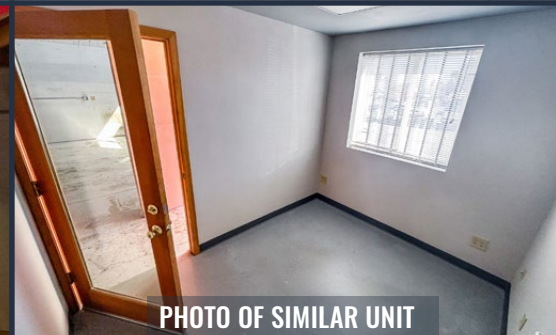


PHOTO OF SIMILAR UNIT

PROPERTY DETAILS

- Unit D8:** 1,500 SF
- Lease Rate:** \$1.10/SF/Mo. NNN
- NNN Exp.:** Est. at \$0.23/SF/Mo.
(Electricity, gas, phone and internet paid by tenant)
- Zoning:** Light Industrial (IL)
- Date Avail.:** October 1st, 2026

HIGHLIGHTS

- Unit is comprised of a warehouse, an office and a restroom
- 14' roll-up door
- Mezzanine storage
- Easy access off of Empire Ave. and Hwy 97
- Located in the Brinson Business Park

Russell Huntamer, CCIM | Jay Lyons, SIOR, CCIM
Eli Harrison, Broker

600 SW Columbia St., Ste. 6100 | Bend, OR 97702
541.383.2444 | www.CompassCommercial.com

COMPASS
COMMERCIAL

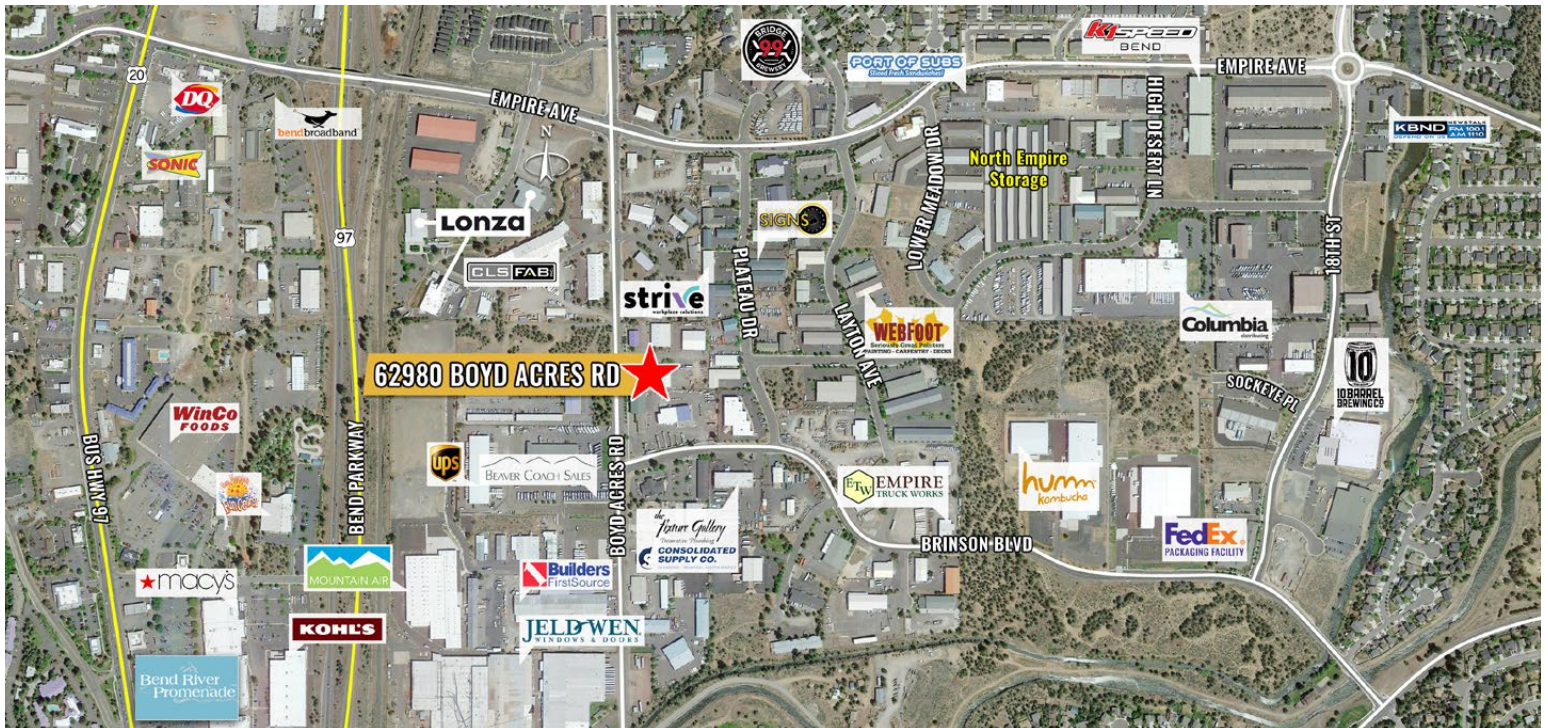
REAL ESTATE SERVICES

FOR LEASE

1,500 SF | \$1.10/SF/MO. NNN

Small Northeast Bend Industrial Space

62980 Boyd Acres Road, D8, Bend, OR 97701



Brokers are licensed in the state of Oregon. This information has been furnished from sources we deem reliable, but for which we assume no liability. This is an exclusive listing. The information contained herein is given in confidence with the understanding that all negotiations pertaining to this property be handled through Compass Commercial Real Estate Services. All measurements are approximate.



Russell Huntamer, CCIM
Partner, Principal Broker
Cell 541.419.2634
rh@compasscommercial.com



Jay Lyons, SIOR, CCIM
Partner, Principal Broker
Cell 541.410.6519
jlyons@compasscommercial.com



Eli Harrison
Broker
Cell 541.977.2890
eharrison@compasscommercial.com

COMPASS COMMERCIAL
REAL ESTATE SERVICES