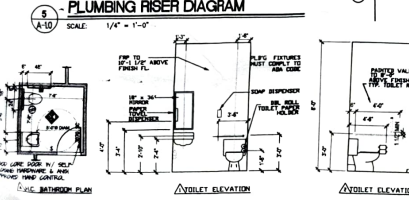
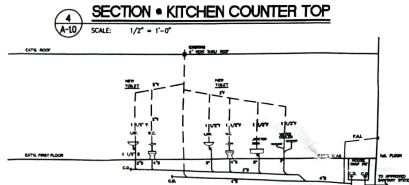
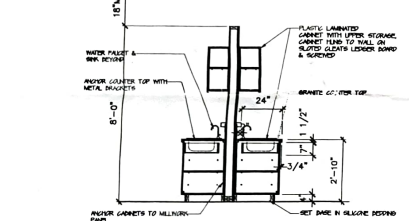


**WALL SECTION 1**  
SCALE: 1" = 1'-0"

**WALL SECTION 2**  
SCALE: 1" = 1'-0"



- NOTES:**
- 1) ANY MODIFICATIONS TO FIRE SPRINKLERS OR SMOKE DETECTOR AND FIRE SYSTEM MUST BE PERMITTED BY FIRE MARSHAL.
  - 2) ALL LIGHT FIXTURES TO REMAIN, RELOCATE AS SHOWN.
  - 3) BATHROOMS AND KITCHENS DISPLAYS ONLY (NOT IN WORKING CONDITIONS).
  - 4) EXISTING ROOF TOP HVAC TO REMAIN AS PERMITTED W/ ORIGINAL BLDG. PERMIT.

**BUILDING CODE NOTES**

**OCCUPANCY CLASSIFICATIONS:**  
"M" MERCHANTILE

**CONSTRUCTION CLASSIFICATIONS:**  
TYPE 2b (SPRINKLER & SMOKE & FIRE DETECTOR EXISTING NO CHANGE REQUIRED ALL PARTITIONS 18" OR MORE FROM CEILING)

**ALTERATION LEVEL:** "2"

SPACES MUST CONFORM TO SECTIONS 6 & 7 OF THE EXT.G. BLDG. CODE

NO CHANGE TO BLDG. ENVELOPE  
(NEW INSULATED GLASS EXIT DOOR)  
NO CHANGES TO MECHANICAL EQUIPMENT  
(REGISTER LOCATION MODIFIED)

LIGHTING LOCATION MODIFIED

**INTERIOR FINISHES:**  
FLOORS SHALL COMPLY WITH CLASS II MATERIALS UNLESS THEY ARE OF MATERIALS THAT ARE NOT COMPRESSED OF FIBERS: WOOD FLOORS, VINYL, TERRAZO OR CERAMIC WHICH ARE PERMITTED.  
WALLS & CEILING SHALL BE CLASS "0" OR BETTER

**FIRE SPRINKLERS:**  
EXISTING FIRE SPRINKLER SYSTEM TO REMAIN MODIFICATION RECD. AS SHOWN  
SMOKE & FIRE DETECTION SHALL COMPLY WITH F.M. AND PREPARE RECD. DRAWINGS  
THESE DWGS. ARE SCHEMATIC ONLY, IT IS THE CONTRACTOR RESPONSIBILITY TO CONFORM TO MASSAU COUNTY F.M. STANDARD

**SMOKE & FIRE DETECTION:**  
EXISTING SMOKE & FIRE DETECTION SYSTEM TO REMAIN MODIFICATION RECD. AS SHOWN  
SMOKE & FIRE DETECTION SHALL COMPLY WITH F.M. AND PREPARE RECD. DRAWINGS  
THESE DWGS. ARE SCHEMATIC ONLY, IT IS THE CONTRACTOR RESPONSIBILITY TO CONFORM TO MASSAU COUNTY F.M. STANDARD

**WALL LEGEND**

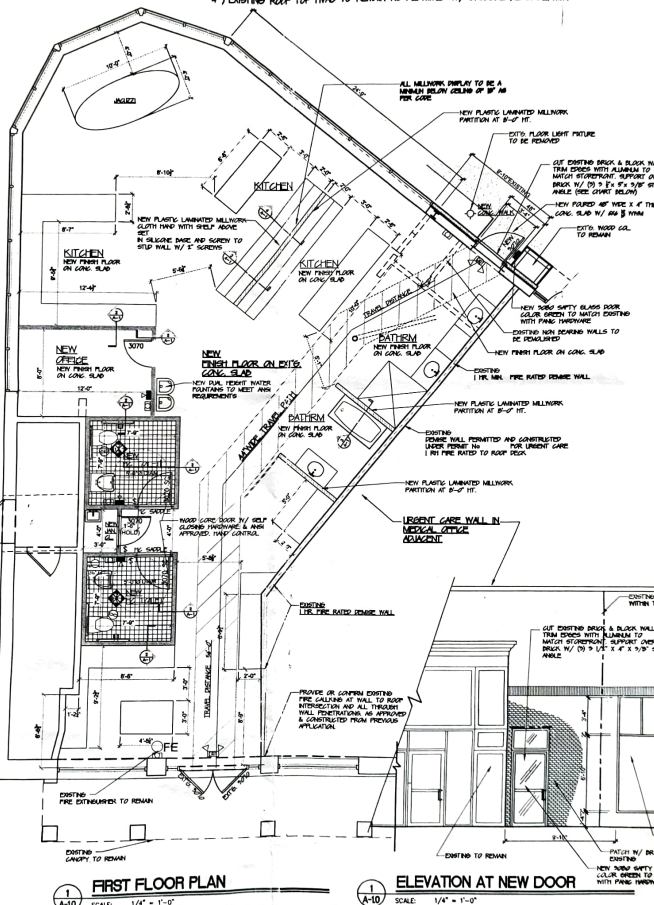
	EXISTING TO BE DEMOLISHED
	EXISTING PARTITIONS
	EXISTING TENANT DEMISE WALL
	NEW 3" 20 GA. MT. STUD WALL
	NEW 8'-0" WALL (MALL WORK)

**PARTITION TYPES**

SYMBOL	DESCRIPTION	DETAILS & HEIGHT
	GENERAL INTERSECTION	1/2" Gypsum Board on 2x4 Stud 1/2" Gypsum Board on 2x4 Stud 1/2" Gypsum Board on 2x4 Stud 1/2" Gypsum Board on 2x4 Stud 1/2" Gypsum Board on 2x4 Stud 1/2" Gypsum Board on 2x4 Stud
	SWITCH & MIRROR NICHES	1/2" Gypsum Board on 2x4 Stud 1/2" Gypsum Board on 2x4 Stud 1/2" Gypsum Board on 2x4 Stud 1/2" Gypsum Board on 2x4 Stud 1/2" Gypsum Board on 2x4 Stud 1/2" Gypsum Board on 2x4 Stud
	EXISTING WALL TO BE REMOVED	
	EXISTING WALL TO BE REMOVED	

**LOOSE LINTEL C.M.U.**

WALL HEIGHT UP TO 4'-0"	4'-0" TO 6'-0"
1" WALL: 12" x 12" x 8" C.M.U.	12" x 12" x 8" C.M.U.
2" WALL: 12" x 12" x 16" C.M.U.	12" x 12" x 16" C.M.U.



**NOTARIO GRUPP ASSOCIATES ARCHITECTS & PLANNERS**

1005 GLEN COVE AVENUE SUITE 1000  
ROSELAND, N.J. 07068  
TEL: (201) 609-2102 FAX: (201) 609-2100

**INTERIOR RENOVATION 50 GLEN COVE AVENUE SUITE 1000 ROSELAND, N.J. 07068**

**EXT. C. FIRST FLOOR PLAN**

**A-1.0**