



# 339 BROADWAY MENANDS, NY 12204

INDUSTRIAL PROPERTY  
TRIPLE NET LEASE  
FULLY LEASED


OFFERING MEMORANDUM


# EXCLUSIVELY *PRESENTED BY*



**Anthony Pasquarella**

VP of Acquisitions


 (518) 588-7215


 [anthony@ironhornenterprises.com](mailto:anthony@ironhornenterprises.com)




**Ryan Jenkins**


VP of Dispositions


 (631) 833-5152

 [rjenkins@ironhornenterprises.com](mailto:rjenkins@ironhornenterprises.com)

**IronHorn Enterprises**

 315-214-8406

 [www.ironhornenterprises.com](http://www.ironhornenterprises.com)

 5912 N Burdick St,  
East Syracuse, NY 13057



## PROPERTY OVERVIEW

Executive Summary  
Investment Highlights

## FINANCIAL OVERVIEW

Financial Summary  
Rent Roll  
Tenant Summary

## LOCATION OVERVIEW

About Menands, NY  
Demographics  
Map

# EXECUTIVE SUMMARY

339 Broadway is a fully leased industrial investment totaling 58,940 SF on 7.11 acres in the highly sought-after Menands submarket of the Capital Region. The property offers 20' clear heights, 2 dock-high doors, 2 drive-in doors, and approximately 6,000 SF of office space, providing functional versatility for a wide range of industrial uses. The expansive site includes valuable excess land, supporting outdoor storage, fleet parking, or future expansion potential—enhancing long-term value and optionality for investors.

The property is less than 2 miles from I-787, offering immediate connectivity to Albany, I-90 (NYS Thruway), and I-87 (Adirondack Northway). Located under one mile from the Port of Albany and approximately five miles from Albany International Airport, the site benefits from direct access to multimodal transportation infrastructure and a strong regional labor pool. Positioned along Broadway (NY-32), a primary industrial corridor, 339 Broadway offers durable cash flow backed by a strategic infill location with long-term upside.

## THE OFFERING

<b>Building SF</b>	58,940 SF
<b>Year Built</b>	1969
<b>Lot Size (Acres)</b>	7.11
<b>Parcel ID</b>	55.6-2-6 and -7
<b>Clear Height</b>	20'
<b>Drive Ins</b>	2
<b>Docks</b>	2

# INVESTMENT HIGHLIGHTS



**Prime Location & Accessibility:** Less than two miles from Albany via I-787, the site offers immediate access to I-90 (NYS Thruway), I-87 (Adirondack Northway), the Port of Albany, and Albany International Airport, anchoring the asset within the Capital Region's core logistics network.



**Expansive Space:** Situated on 7.11 acres, the property offers an unusually large site footprint for an infill location, providing valuable excess land for outdoor storage, fleet parking, or future expansion.



**Strategic Features:** Clear heights ranging from 20', combined with multiple drive-in doors and dedicated office space, create a highly adaptable layout that supports tenant retention and long-term demand.



**Industrial Infrastructure:** Functional loading with dock and drive-in access, strong power capacity, and efficient truck circulation along the NY-32 corridor deliver the core infrastructure required for modern industrial operations.



**Zoning Advantage:** Located within an established industrial zoning district in Menands, the property supports a wide range of warehouse, distribution, and service-oriented uses, preserving long-term leasing flexibility and exit optionality.



# FINANCIAL SUMMARY

	In Place	Year 1	Year 2	Year 3	Year 4	Year 5
<b>GROSS REVENUE</b>						
BASE RENTAL REVENUE	\$494,129	\$503,337	\$517,393	\$531,844	\$546,702	\$561,978
TAX & INS; MANGEMENT FEE	\$81,935	\$83,574	\$85,245	\$86,950	\$88,689	\$90,463
EFFECTIVE GROSS REVENUE	\$576,064	\$586,910	\$602,638	\$618,794	\$635,391	\$652,441
<b>OPERATING EXPENSES</b>						
PROPERTY TAX	\$75,690	\$77,204	\$78,747	\$80,322	\$81,929	\$83,568
INSURANCE	\$6,245	\$6,370	\$6,498	\$6,628	\$6,760	\$6,895
TOTAL OPERATING EXPENSES	\$81,935	\$83,574	\$85,245	\$86,950	\$88,689	\$90,463
NET OPERATING INCOME	\$494,129	\$503,337	\$517,393	\$531,844	\$546,702	\$561,978

# RENT ROLL

## 339 BROADWAY RENT ROLL

UNIT	TENANT NAME	SQFT	Annual Rent	Annual Rent/SQFT	Lease From	Lease To
Space 1	Extreme Molding LLC	38,000	\$204,609	\$5.38	03/01/2023	07/01/2033
Space 2	First Student Inc.	8,000	\$199,874	\$24.98	04/01/2023	03/31/2033
Space 3	New Rochelle Carpet	12,940	\$89,646	\$6.93	10/15/2023	10/31/2028
TOTAL		58,940	\$494,129			



# TENANT SUMMARY

## Extreme Molding, LLC



Extreme Molding LLC, founded in 2002, specializes in silicone injection molding, offering services like overmolding, compression molding, and packaging. They serve industries such as healthcare, consumer products, and pet care, focusing on durable, precise silicone components for various applications.

### LEASE OVERVIEW

Lease Type	Triple Net
Lease Commencement	03/01/2023
Lease Expiration	07/01/2033
Base Term Remaining	7 years
Options	Two (2) Options to Extend for Five (5) years
Rental Increase	+2.5% Annually
Tenant Purchase Rights	ROFR



## First Student Inc.

First Student, Inc. is North America's leading provider of school transportation, operating about 44,050 vehicles and transporting 5 million students daily. They offer services including regular school routes, special-needs transportation, field trips, and charter bus rentals. The company was sold to EQT Infrastructure in 2021.

### LEASE OVERVIEW

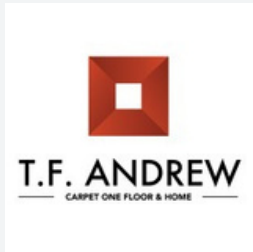
Lease Type	Triple Net
Lease Commencement	04/01/2023
Lease Expiration	03/31/2033
Base Term Remaining	7 years
Options	Two (2) Options to Extend for Five (5) years-
Rental Increase	+3& Annually



# TENANT SUMMARY

## New Rochelle Carpet Inc.

New Rochelle Carpet, Inc. specializes in flooring services, including the installation of carpets, hardwood floors, and tiles. They also offer wood floor refinishing, design consultations, and assistance with insurance claims related to flooring. The company caters to both residential and commercial clients, providing a range of flooring solutions tailored to customer needs.



## LEASE OVERVIEW

<b>Lease Type</b>	Triple Net
<b>Lease Commencement</b>	10/15/2023
<b>Lease Expiration</b>	10/31/2028
<b>Base Term Remaining</b>	4 years
<b>Options</b>	Two (2) Options to Extend for Five (5) years
<b>Rental Increase</b>	+3% Annually

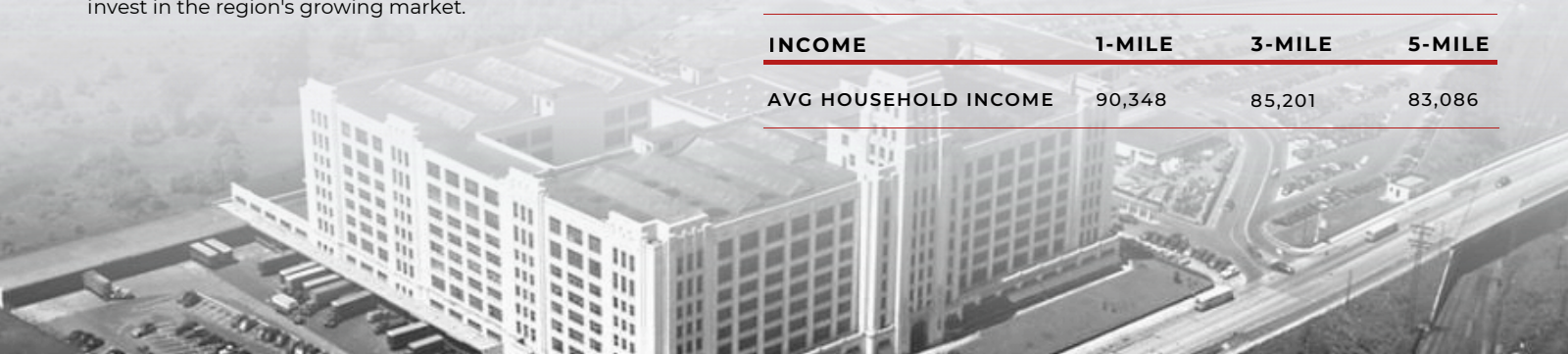
# ABOUT MENANDS, NY

Menands, New York, is a village in Albany County with a dynamic commercial real estate market that includes office, industrial, and retail properties. The area offers a range of opportunities for businesses and investors due to its proximity to Albany and major transportation routes.

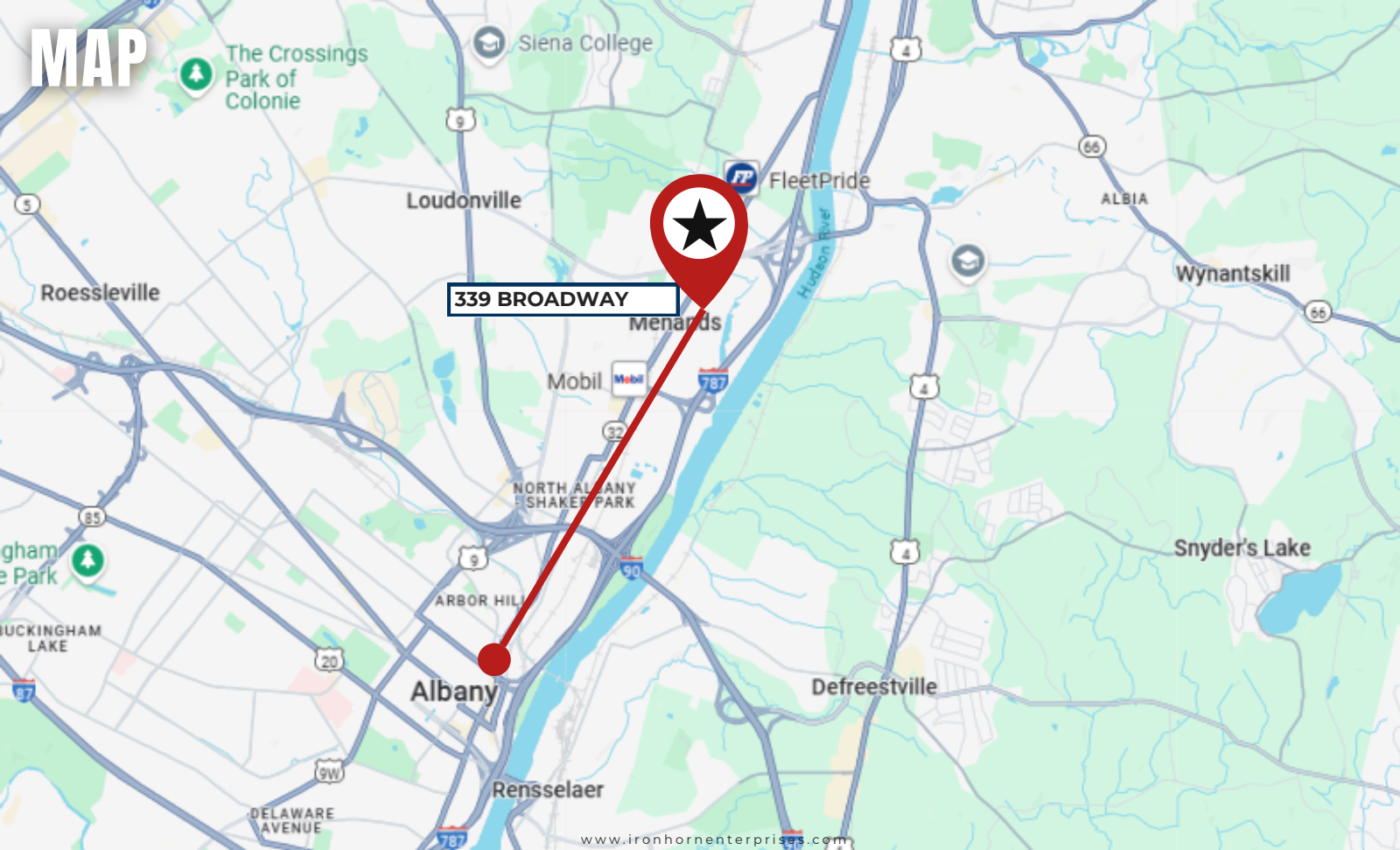
The office sector provides significant availability, making it suitable for businesses looking to establish a professional presence. The industrial market is robust, with ample space for warehousing, manufacturing, and logistics operations. Retail properties also cater to a variety of business needs, supporting both local and regional commerce.

Menands' strategic location and diverse property offerings make it an attractive destination for businesses seeking to expand or invest in the region's growing market.

<b>POPULATION</b>	<b>1-MILE</b>	<b>3-MILE</b>	<b>5-MILE</b>
<b>2029 PROJECTION</b>	2,706	66,877	210,625
<b>2024 POPULATION</b>	2,642	67,569	213,087
<b>2020 CENSUS</b>	2,175	67,939	215,606
<b>HOUSEHOLD</b>	<b>1-MILE</b>	<b>3-MILE</b>	<b>5-MILE</b>
<b>2029 PROJECTION</b>	1,252	28,395	90,216
<b>2024 HOUSEHOLDS</b>	1,224	28,698	91,305
<b>2020 CENSUS</b>	1,020	28,903	92,603
<b>INCOME</b>	<b>1-MILE</b>	<b>3-MILE</b>	<b>5-MILE</b>
<b>AVG HOUSEHOLD INCOME</b>	90,348	85,201	83,086



# MAP



The Crossings  
Park of  
Colonie

Siena College

Loudonville

FleetPride

ALBIA

Wynantskill

339 BROADWAY

Menands

Mobil

NORTH ALBANY  
SHAKER PARK

Snyder's Lake

Albany

Defreestville

Rensselaer

DELAWARE  
AVENUE

# 339 BROADWAY | MENANDS, NY 12204

OFFERING MEMORANDUM

## EXCLUSIVELY LISTED BY



**Anthony Pasquarella**

VP of Acquisitions

📞 (518) 588-7215

✉️ [anthony@ironhornenterprises.com](mailto:anthony@ironhornenterprises.com)



**Ryan Jenkins**

VP of Dispositions

📞 (631) 833-5152

✉️ [rjenkins@ironhornenterprises.com](mailto:rjenkins@ironhornenterprises.com)



**IronHorn Enterprises**

📞 315-214-8406

🌐 [www.ironhornenterprises.com](http://www.ironhornenterprises.com)

📍 5912 N Burdick St,  
East Syracuse, NY 13057

## CONFIDENTIALITY AGREEMENT & DISCLAIMER

**CONFIDENTIALITY STATEMENT** The information contained in the following offering memorandum is proprietary and strictly confidential to IRONHORN ENTERPRISES and its related entities. It is intended to be reviewed only by the intended recipient from IRONHORN ENTERPRISES and it should not be made available to any other person or entity without the explicit written consent of IRONHORN ENTERPRISES. By taking possession of and reviewing the information contained herein, the recipient agrees to hold and treat all such information in the strictest confidence. The recipient further agrees that the recipient will not photocopy or duplicate any part of the offering memorandum. This offering memorandum has been prepared to provide summary, unverified financial and physical information to prospective purchasers in order to establish a preliminary level of interest in the subject property. The information contained herein is not intended as a substitute for due diligence by the recipient or any interested party in the subject property. IRONHORN ENTERPRISES has not made any investigation, makes no warranty or representation with respect to the income and expenses for the subject property, the future projected financial performance of the property, the size and square footage of the property, capital improvements, the presence or absence of contaminating substances, PCBs or asbestos, the compliance with local, state and federal regulations, the physical condition of the improvements thereon, the financial condition or business prospects of any tenant, or any tenant's plans or intentions to continue its occupancy of the subject property. The information contained in this offering memorandum has been obtained from sources that are believed to be reliable; however, IRONHORN ENTERPRISES has not verified, and will not verify nor has any duty to verify for the recipient, any of the information contained herein, nor has IRONHORN ENTERPRISES conducted any investigation regarding these matters and makes no warranty or representation whatsoever regarding the accuracy or completeness of the information provided. All potential buyers must take appropriate measures to verify all of the information set forth herein. Prospective buyers shall be responsible for their costs and expenses of investigating the subject property. Prospective buyers shall not use any of the information contained within the offering memorandum to contact any tenant unless given express permission from IRONHORN ENTERPRISES. PROPERTY SHOWINGS ARE BY APPOINTMENT ONLY. PLEASE CONTACT THE IRONHORN ENTERPRISES LISTED AGENT FOR MORE INFORMATION.