

# FRYE ROAD BUSINESS PARK

2555 WEST FAIRVIEW STREET  
CHANDLER, AZ

**100% HVAC**















**8,692 SF SUITE AVAILABLE**

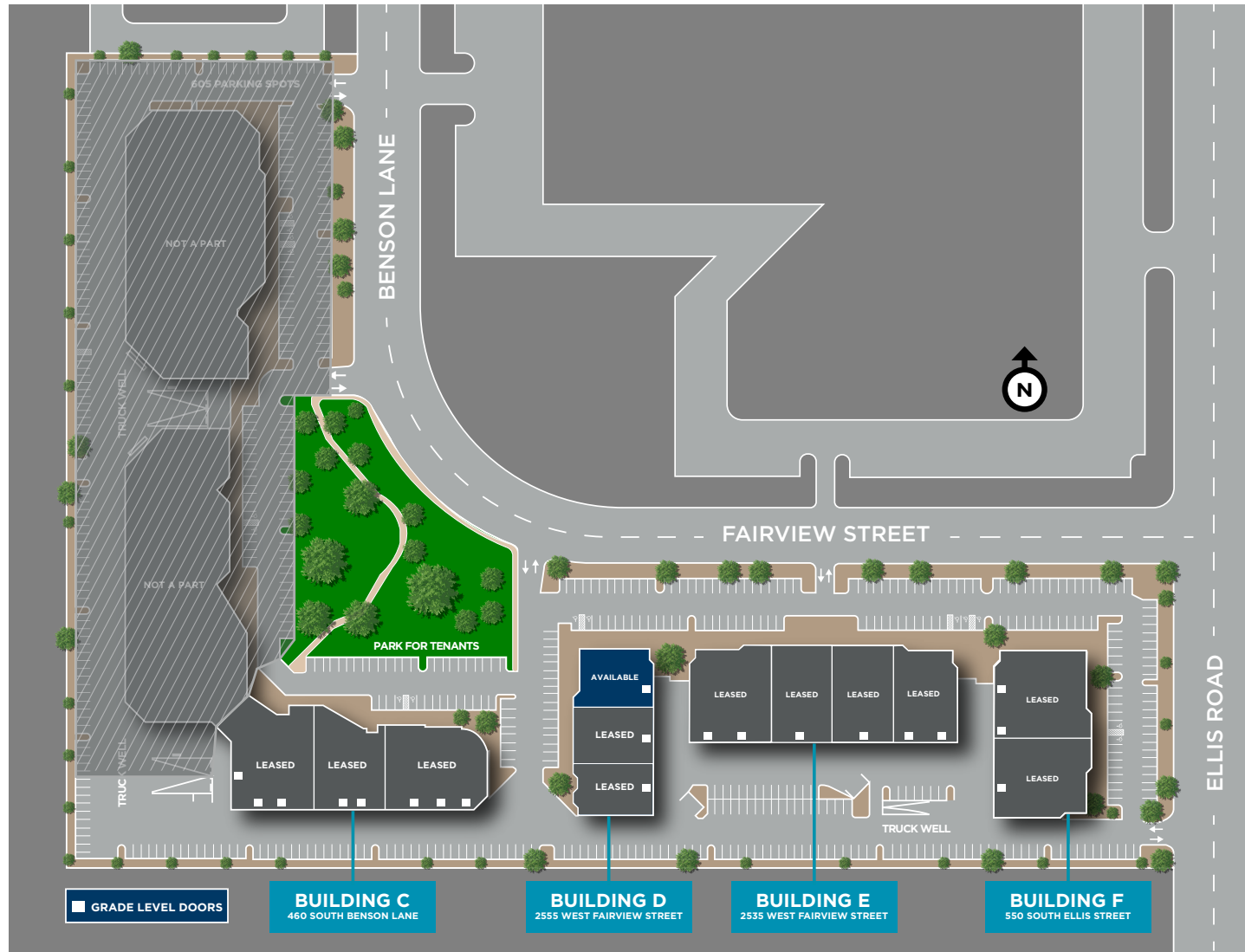


# 2555 WEST FAIRVIEW STREET

Chandler, AZ

## PROPERTY OVERVIEW

-  **Address**  
2555 West Fairview Street  
Chandler (Phoenix), AZ
-  **Site Area**  
9.05 Acres
-  **Number of Buildings**  
4
-  **Year Built**  
Buildings C: 2000  
Buildings D, E, & F: 2004
-  **Zoning:**  
I-1
-  **Area**  
Price Road Corridor
-  **County**  
Maricopa
-  **Total Parking Spots**  
3.1/1,000
-  **Electrical Provider**  
SRP
-  **Water & Sewer**  
City of Chandler
-  **Fiber**  
Cox Communications
-  **100% HVAC**



# CORPORATE NEIGHBORS MAP



4.6 MILES

PRICE ROAD CORRIDOR


GILA RIVER INDIAN RESERVATION LAND

1.0 MILE TO 202

202

ASML

Western Digital

Bashas'

CHANDLER FASHION CENTER 0.9 MILES

101

UTC Aerospace Systems

ELLIS STREET

FAIRVIEW STREET

KLA+

TEL  
TOKYO ELECTRON

WGNSTAR  
WGNSTAR COMMUNICATIONS

APPLIED MATERIALS

BENYON LANE

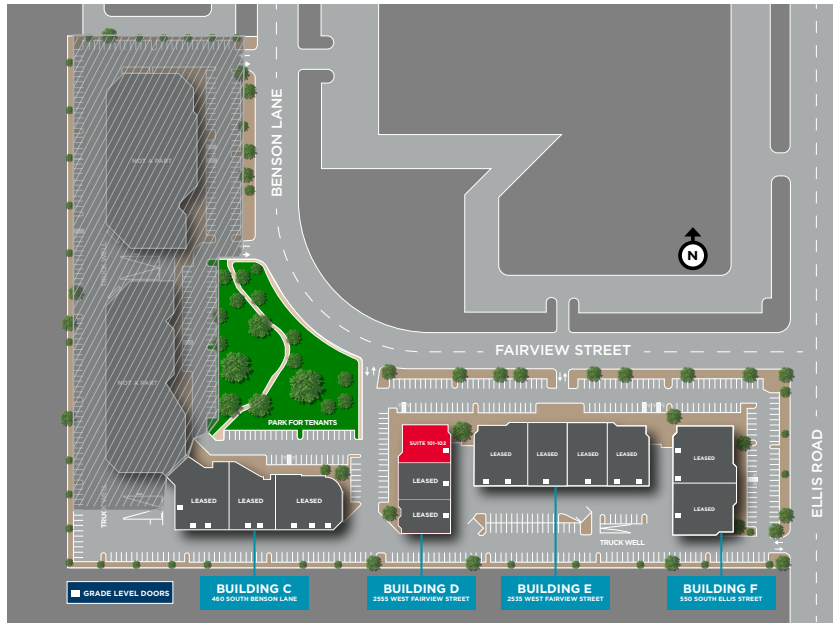
BRACKEN LANE

FRYE ROAD

0.3 MILES TO 101



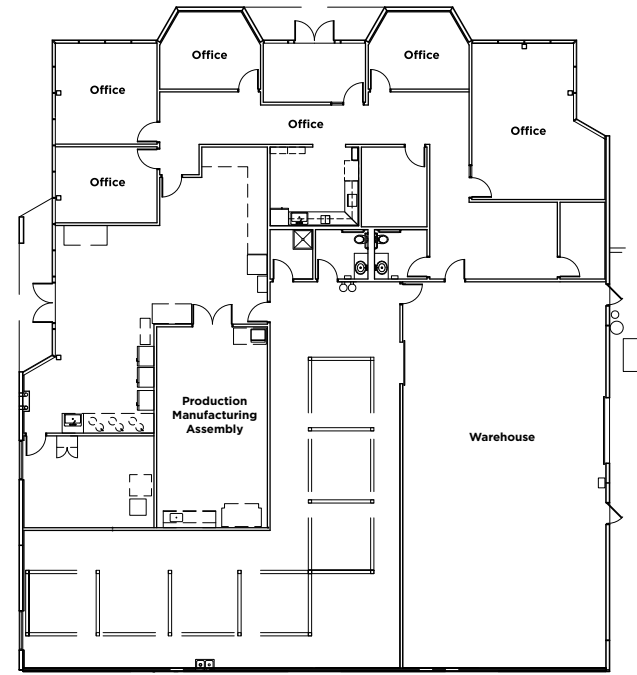
# SUITE 101/102 AVAILABILITY



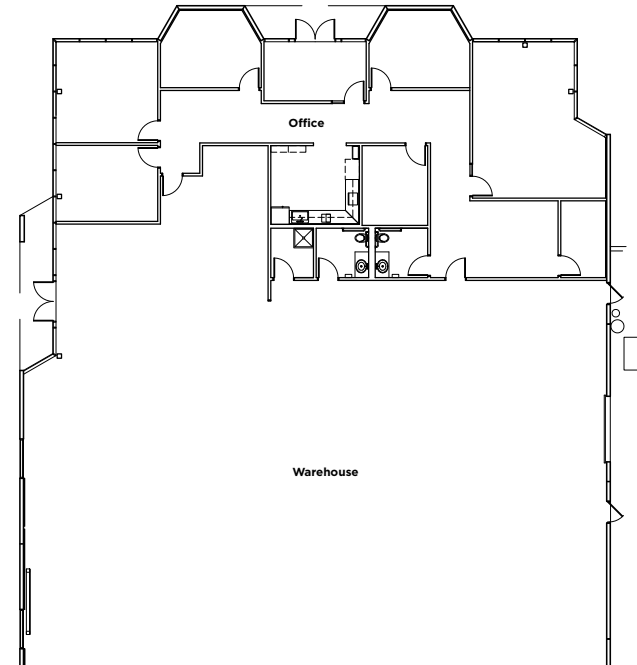
■ SUITE 101-102  
 ■ AVAILABLE  
 ■ LEASED  
 ■ NOT A PART

<b>Total SF</b>	8,692 SF
<b>Grade Level Door</b>	1
<b>Clear Height</b>	22'
<b>Parking Ratio</b>	3.1/1,000
<b>Power</b>	1,300 Amps
<b>Truckwell</b>	Access to Common Truckwell
<b>HVAC</b>	100%
<b>Status</b>	Available June 2026

## CURRENT PLAN



## POTENTIAL PLAN





**FOR MORE INFORMATION, CONTACT:**

**JUSTIN SMITH**

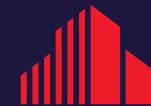
Director  
+1 602 586 5938  
[justin.p.smith@cushwake.com](mailto:justin.p.smith@cushwake.com)

**MIKE HAENEL**

Executive Vice Chair  
+1 602 224 4404  
[michael.haenel@cushwake.com](mailto:michael.haenel@cushwake.com)

**JORDAN SIMS**

Associate  
+1 602 468 8589  
[jordan.sims@cushwake.com](mailto:jordan.sims@cushwake.com)



**CUSHMAN &  
WAKEFIELD**

2555 East Camelback Road, Suite 400  
Phoenix, AZ 85016  
+1 602 954 9000  
[cushmanwakefield.com](http://cushmanwakefield.com)