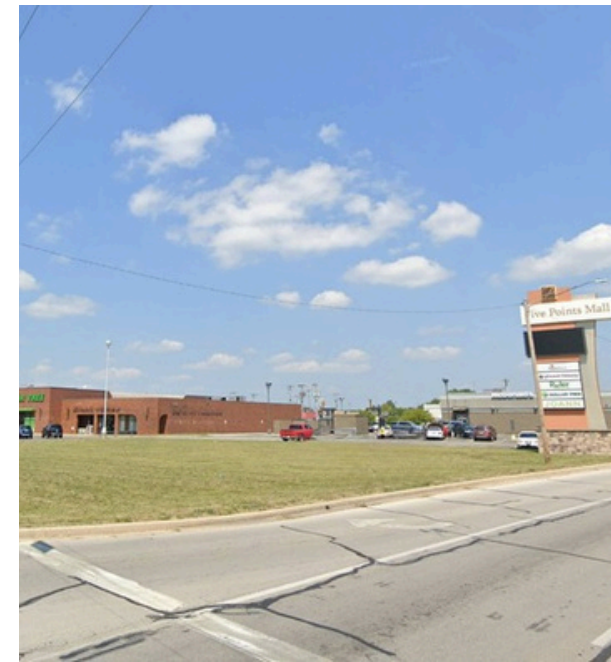


FIVE POINTS MALL JR ANCHOR

1129 N BALDWIN AVE, MARION, IN 46952



OVERVIEW

Located at 1129 N Baldwin Avenue, this property comprises an enclosed shopping center on a 37-acre site. Primary tenants of the shopping center include Roses and Planet Fitness. The property also contains outlots with Ruler Foods by Kroger, Dollar Tree, Buffalo Wild Wings, McDonalds, and new 7Brew Coffee at the entrance.

The location has traffic counts exceeding 21,000 VPD and features multiple signalized entrances and a pylon sign. Five Points Mall is within a mile of Marion's largest employers, GM and Marion General Hospital, and is less than 5 miles from Indiana Wesleyan University, home to 3,000 students.

65,534

Trade Area
Population

26,108

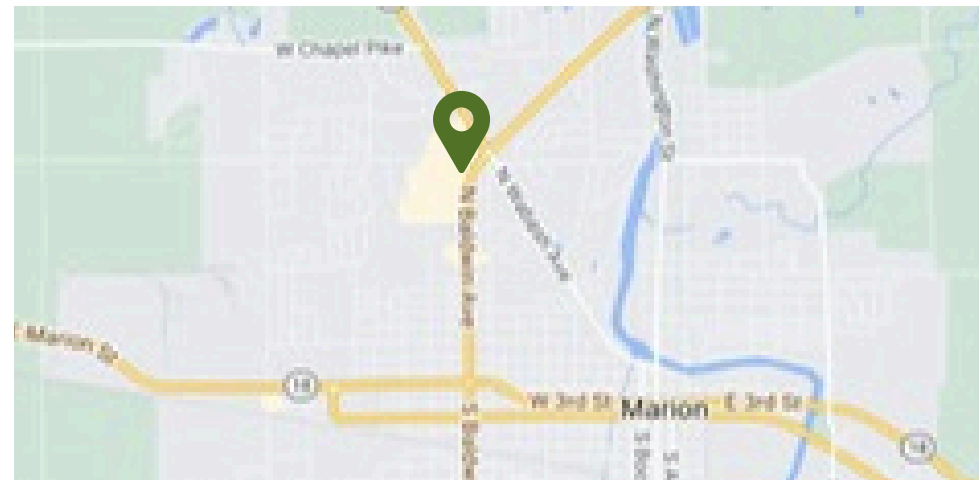
Households in
Trade Area

\$64,779

Avg HH Income in
Trade Area

\$1.35B

Total Household
Expenditure in
Trade Area



Keith W. Stark
CEO
O 317.684.6864
kstarke@activusre.com

Indianapolis Office - HQ
3815 River Crossing Pkwy, Ste. 100
Indianapolis, IN 46240
activusre.com

Member
Hospitality Indiana **ICSC** **Urban Land Institute**

 **ACTIVUSRE**

FIVE POINTS MALL

1129 N BALDWIN AVE, MARION, IN 46952



Keith W. Stark
CEO
O 317.684.6864
kstarke@activusre.com

Indianapolis Office - HQ
3815 River Crossing Pkwy, Ste. 100
Indianapolis, IN 46240
activusre.com

Member
Hospitality Indiana | ICSC | Urban Land Institute



FIVE POINTS MALL

1129 N BALDWIN AVE, MARION, IN 46952



Keith W. Stark
 CEO
 O 317.684.6864
 kstark@activusre.com

Indianapolis Office - HQ
 3815 River Crossing Pkwy, Ste. 100
 Indianapolis, IN 46240
 activusre.com

Member



FIVE POINTS MALL

1129 N BALDWIN AVE, MARION, IN 46952



Keith W. Stark
CEO
O 317.684.6864
kstar@activusre.com

Indianapolis Office - HQ
3815 River Crossing Pkwy, Ste. 100
Indianapolis, IN 46240
activusre.com

Member

