

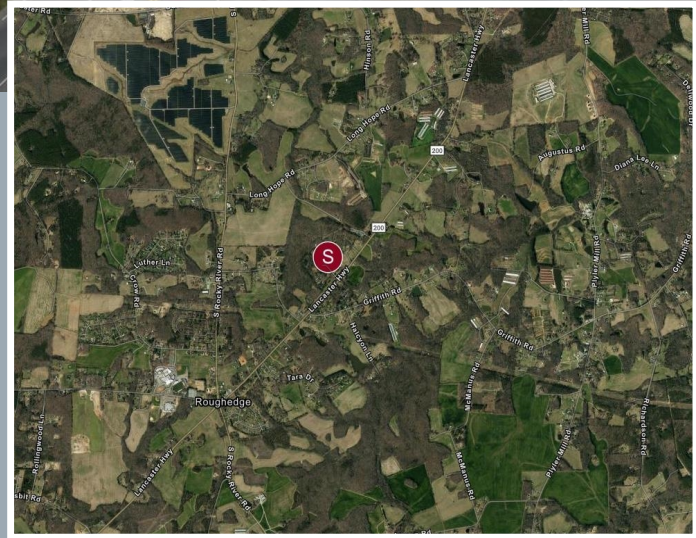
# 2.6 Acre Commercial Lot

4526 Lancaster Hwy  
Monroe NC 28112



## HIGHLIGHTS:

- » Offered at \$440,000
- » 2.6 Acre Graded Lot
- » Adjacent to Dollar General
- » Zoned GB (General Business)
- » Union County Parcel ID 09327001U



Exclusively Marketed by:

**Emily Cline**

MW Commercial Realty, LLC

Partner

(704) 280-1314

emily@mwcommercialrealty.net

303799



<https://www.mwcommercialrealty.net>