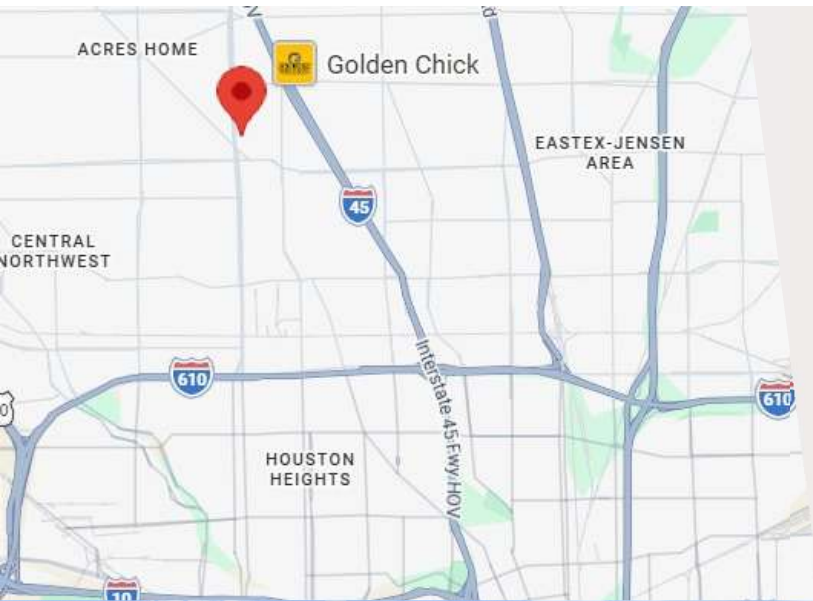




632 Northew & 6004 Shepherd
Houston, TX 77091

*FOR LEASE:
20,575 SF
(DIVISIBLE)*



PROPERTY INFORMATION:

Address: 632 Northew & 6004 Shepherd, Houston, TX 77091

Available:

Rate:

Northew: 10,000 SF (5,000 SF units)

\$8.64/ft + NNN

Shepherd: 10,575 SF (Two Buildings)

\$8.16/ft + NNN

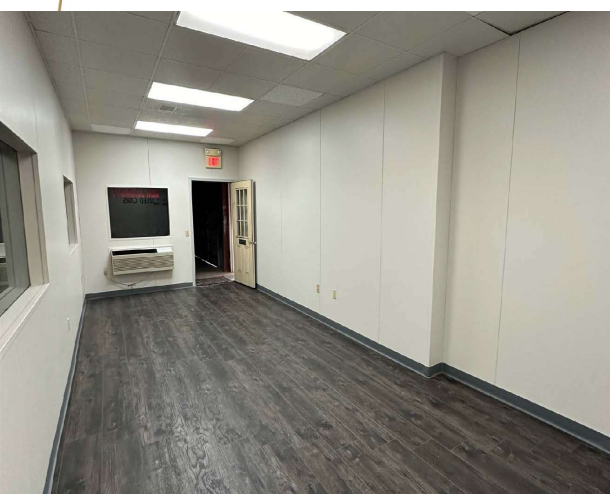
NNN: \$2.95/ft

Highlights:

- Newly Renovated Offices
- 14' to 16' Clear Height
- Multiple Grade Level Doors
- 3 Phase/ 480V Power
- LED Lights
- Quick Access to I45, SH 249, Hardy Toll Road

SITEPLAN







CONTACT

Alexander Montano



amontano@amarco.com



(682) 261-5765 cell



(469) 310-1461 office