

468–496 Queen Street East
Toronto, Ontario



LEASING CONTACT

Emma Turner
D 416 304 9180 T 416 977 9002
eturner@alliedreit.com

LEASING CONTACT

Sam Carr
D 647.409.5454 T 416 977 9002
scarr@alliedreit.com

ALLIED

With more than 200 properties across Canada, comprising more than 15 million square feet, Allied has earned a reputation for contributing to the vitality of Canada's most vibrant urban neighbourhoods, and for developing workplaces distinguished by thoughtful, human-scale design, proactive property management, and an unsurpassed occupant experience.

PROPERTY HIGHLIGHTS

Located on the north side of Queen Street East near Sumach Street is Dominion Square, a beautifully restored Class I, brick-and-beam building. The modern glass elevator tower provides tenants a view of the exposed brick visible throughout the building.

AMENITIES

- Security Guard

TELECOM PROVIDER

- Bell

WHEELCHAIR ACCESSIBLE

- Yes

PARKING

- Available

TRANSPORTATION

- 20 Minute Walk to PATH
- 31 Minute Walk to Union Station
- 1 Minute Walk to Streetcar
 - 501 Queen
- 20 Minute Walk to Queen Subway Station

SUITE INFORMATION

SUITE	SF	TYPE	AVAILABILITY	VIRTUAL TOUR
200*	1,358	Office	Immediate	Click Here
203**	1,451	Office	Immediate	N/A
210*	4,752	Office	Immediate	N/A
301***	1,754	Office	Immediate	N/A
302*	2,012	Office	Immediate	N/A
303**	8,024	Office	Immediate	N/A
400***	3,040	Office	Immediate	N/A
500**	5,690	Office	Immediate	N/A

*South Building

**North Building

***478 Queen St E

Net Rent

Call Leasing Contact

Additional Rent

Suites 200, 210: \$21.81

Includes Utilities
Excludes In-Suite Janitorial

Suite 203, 303, 503: \$21.24

Suite 301, 400: \$22.47

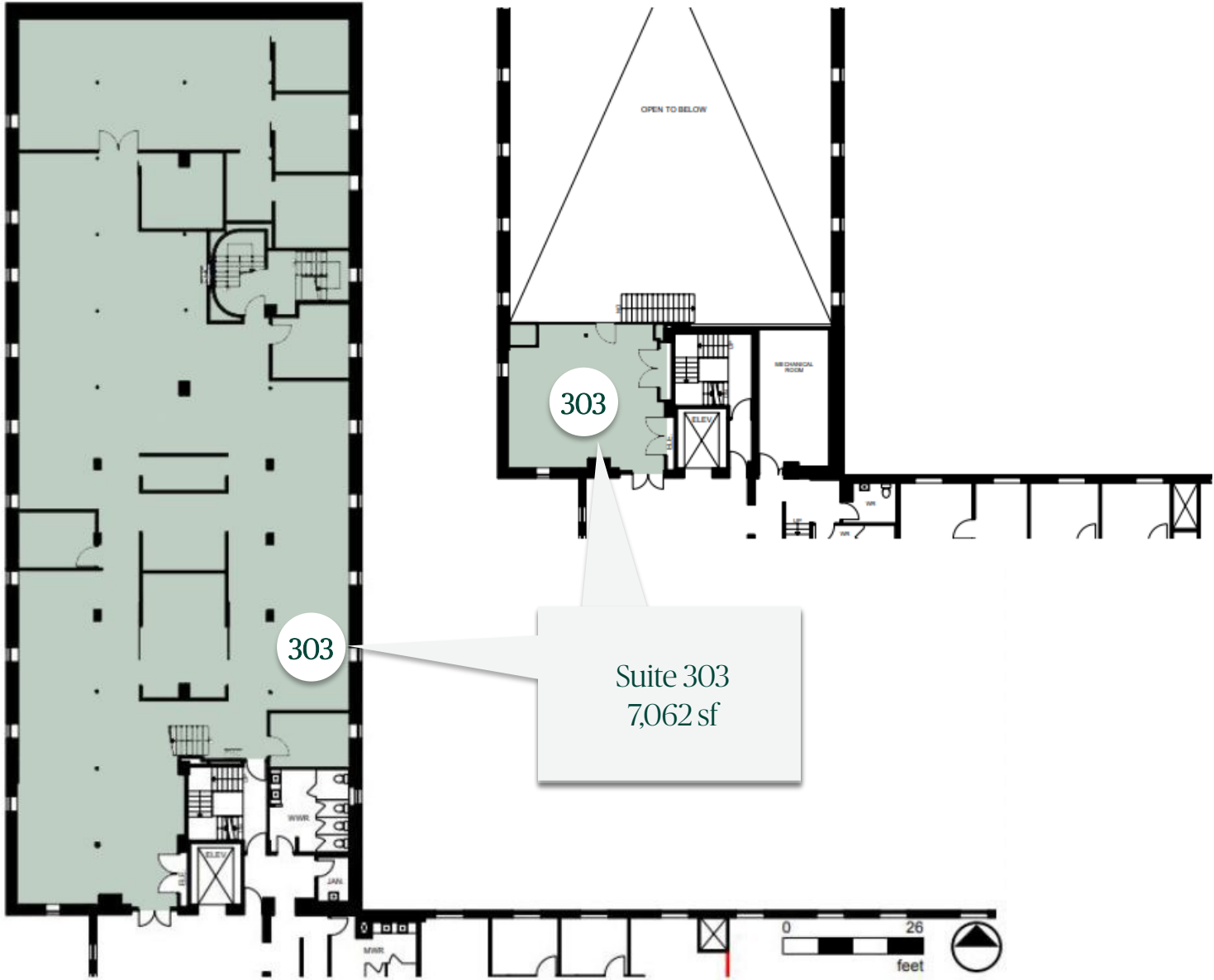
468 Queen Street East - North Second Floor Floorplan



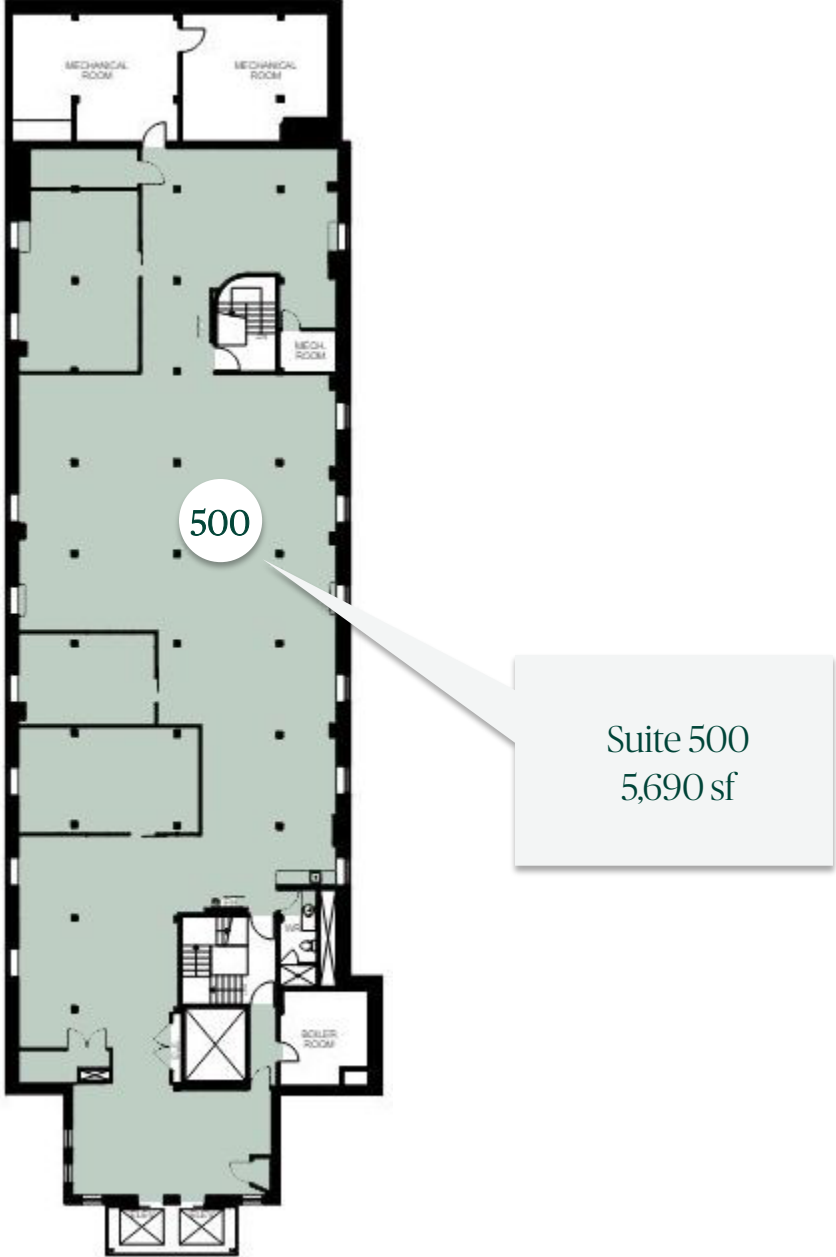
Suite 203
1,451 sf



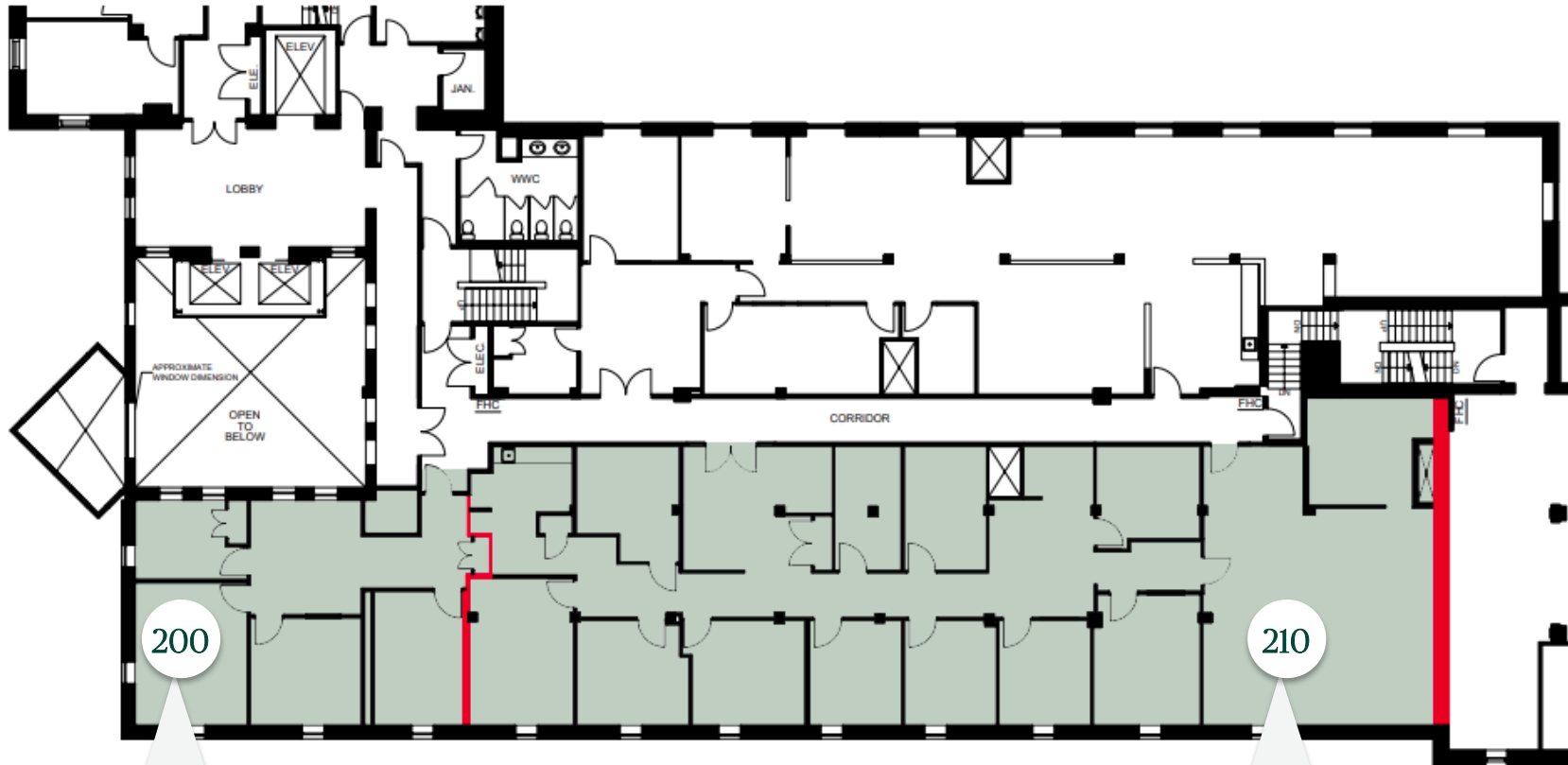
468 Queen Street East - North Third Floor Floorplan



468 Queen Street East - North Fifth Floor Floorplan



468 Queen Street East - South Second Floor Floorplan



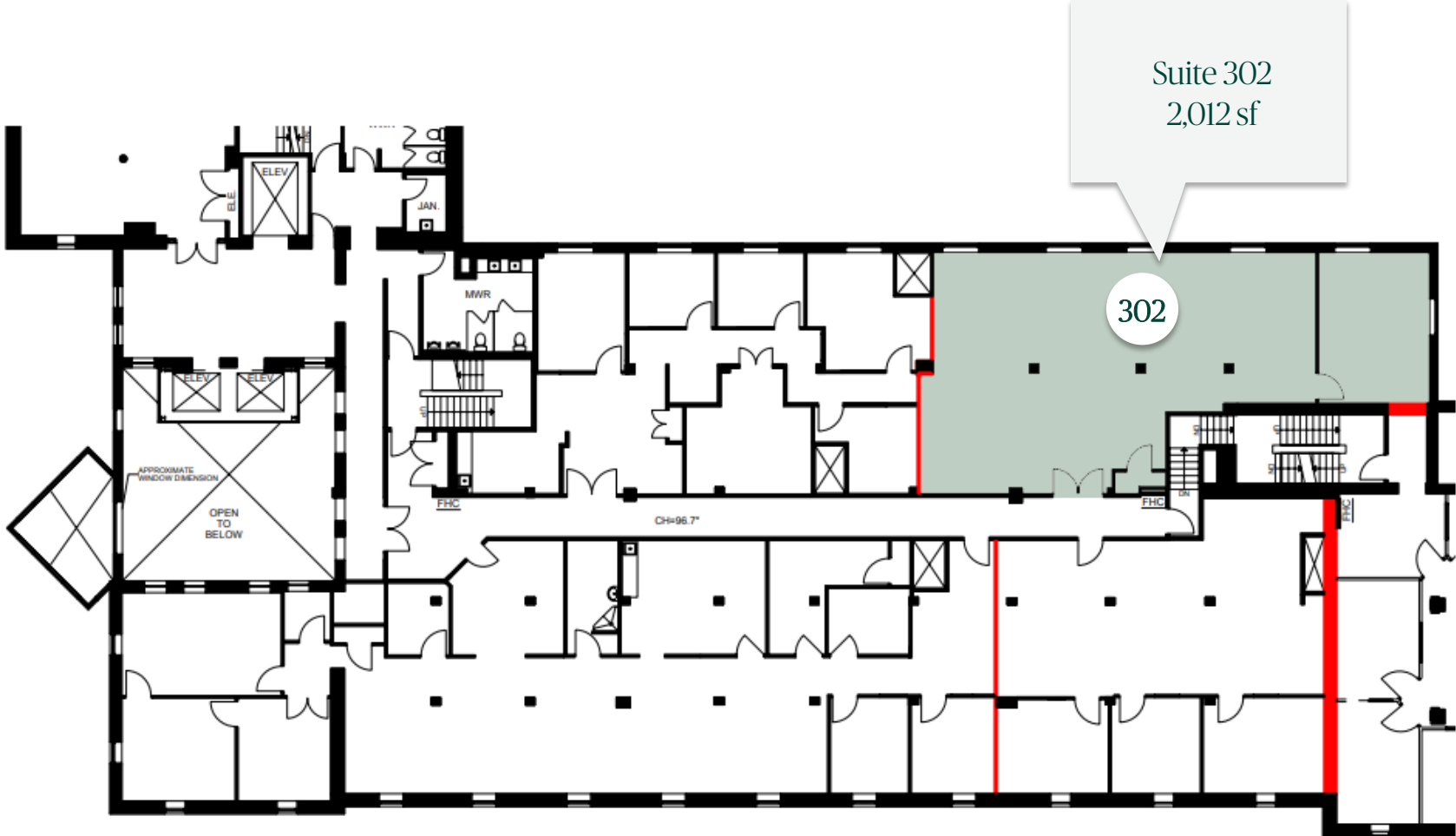
200

Suite 200
1,358 sf

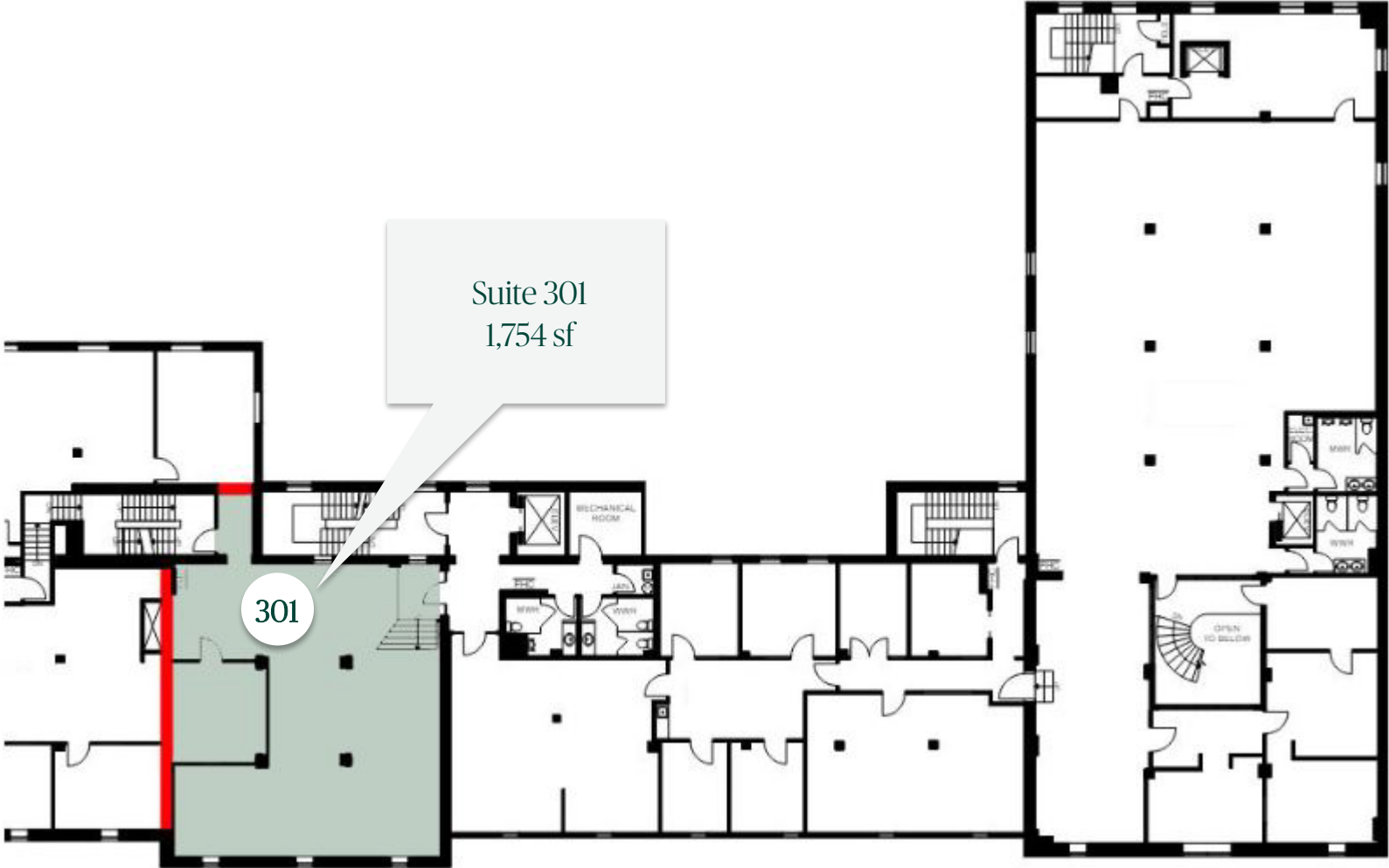
210

Suite 210
4,752 sf

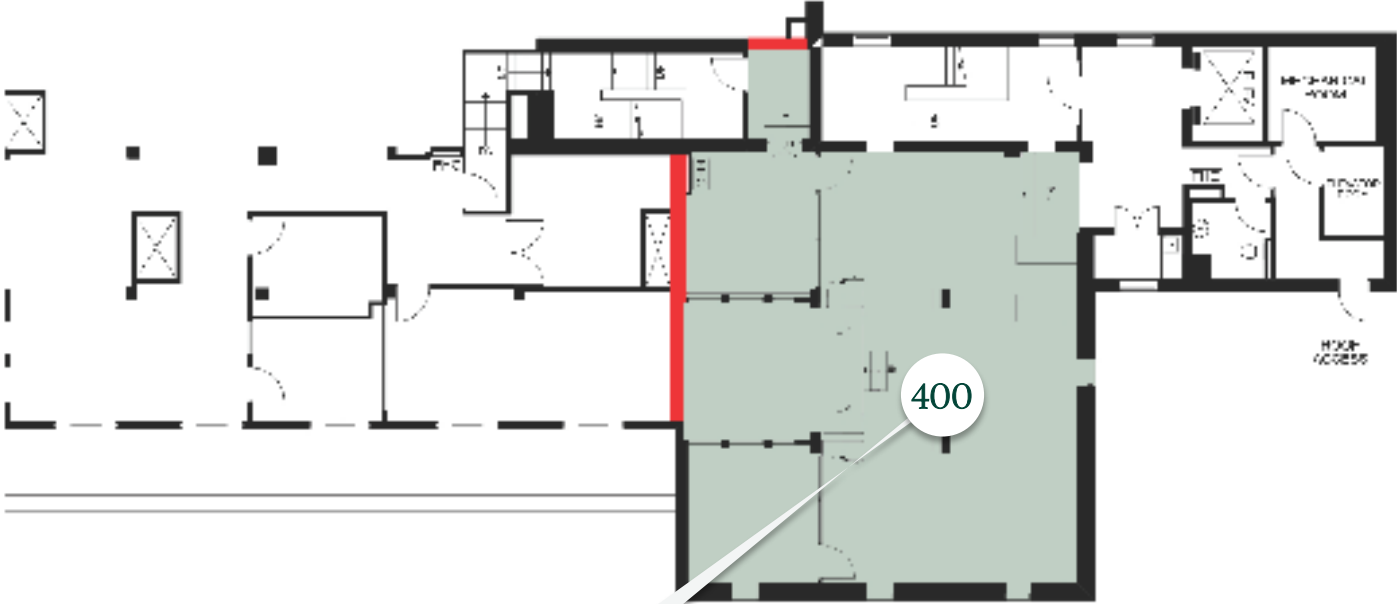
468 Queen Street East - South Third Floor Floorplan



478-496 Queen Street
Third Floor Floorplan

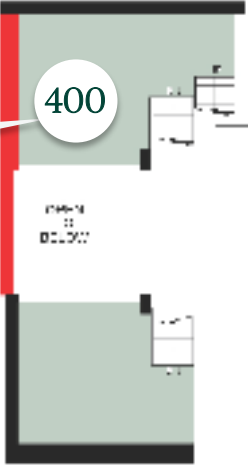


478-496 Queen Street
Fourth Floor Floorplan

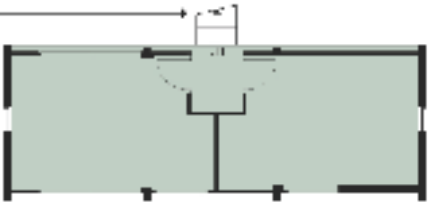


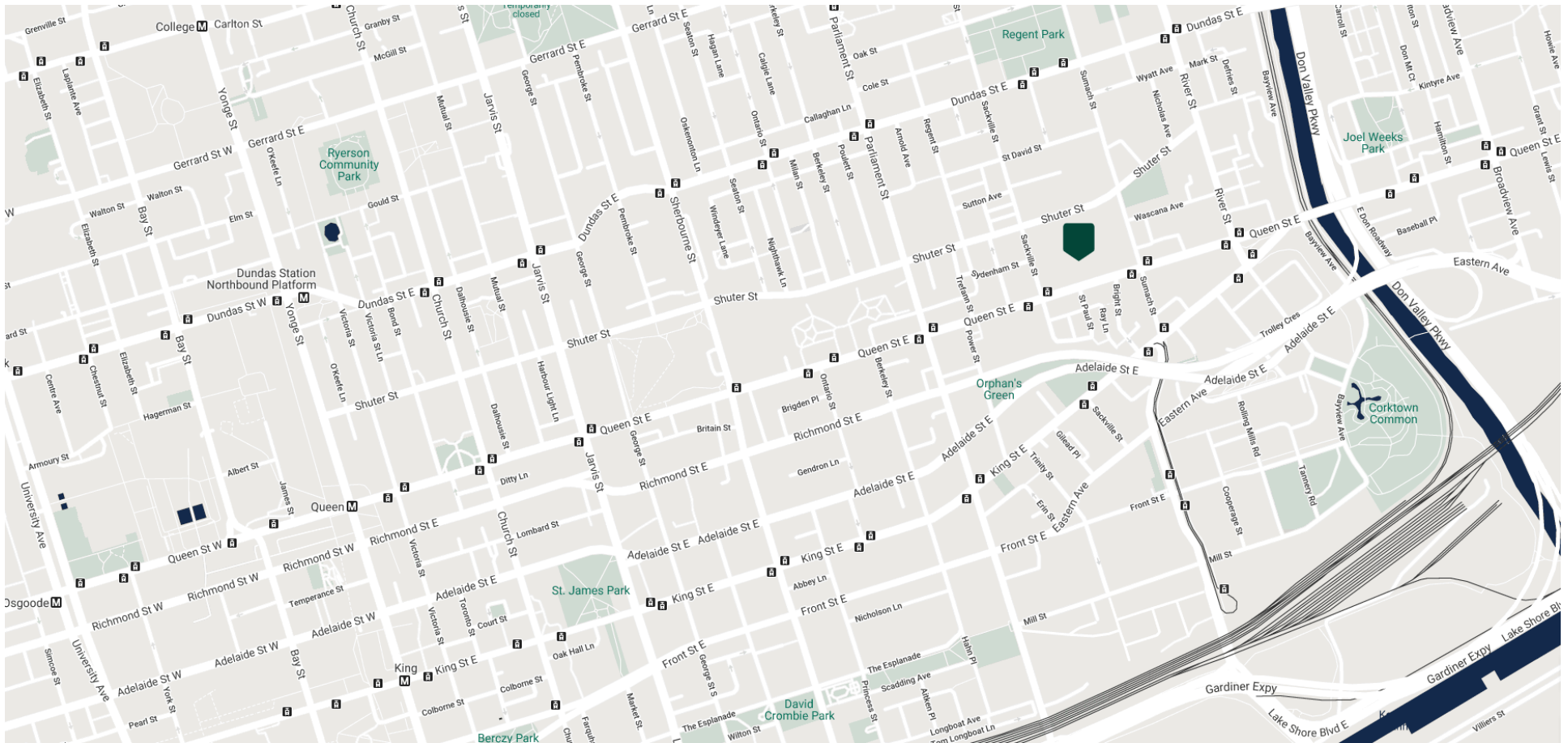
Suite 400
3,040 sf

MEZZANINE
A



MEZZANINE
B





LOCATION

Walk Score® | 94 Walker's Paradise
 Transit Score® | 100 Rider's Paradise
 Bike Score® | 97 Rider's Paradise
 Less than two minute walk to streetcars

RESTAURANTS

Flame Shack
 Fusili
 Kiza Restaurant & Lounge
 King Solomon and Queen of Sheba
 Ethiopian Restaurant

HEALTH & WELLNESS

Hardknocks Boxing Club
 Fuel Training Club King East
 Body + Soul Fitness
 OBF Gyms

SERVICES

BMO Bank of Montreal
 FreshCo.
 The Broadview Hotel
 Regent Park Community
 Centre Kabul Farms Supermarket

ALLIED

ALLIED PROPERTIES

134 Peter St, Suite 1700 Toronto, On M5v 2H2
T 416 977 9002 F 416 306 8704
alliedreit.com