

RENO AIRCENTER BUILDING 5

AIRPORT SUBMARKET

4792 Longley Lane,
Reno, NV 89502



FOR LEASE

11,332 SF



LEASED BY

Colliers

RENO AIRCENTER BUILDING 5

AIRPORT SUBMARKET

4792 Longley Lane
Reno, NV 89502

BUILDING SPECIFICATIONS

Lease Rate	Negotiable
Est. OPEX	\$0.20/SF
Available Space	11,332 SF
Office Space	1,206 SF
Dock-High Doors/Drive-In Doors	4 Dock, 1 Drive-In
Clear Height	18'
Sprinklers	.33/3,000
Power	400 AMP, 480/277 volts, 3-Phase
Built	1986

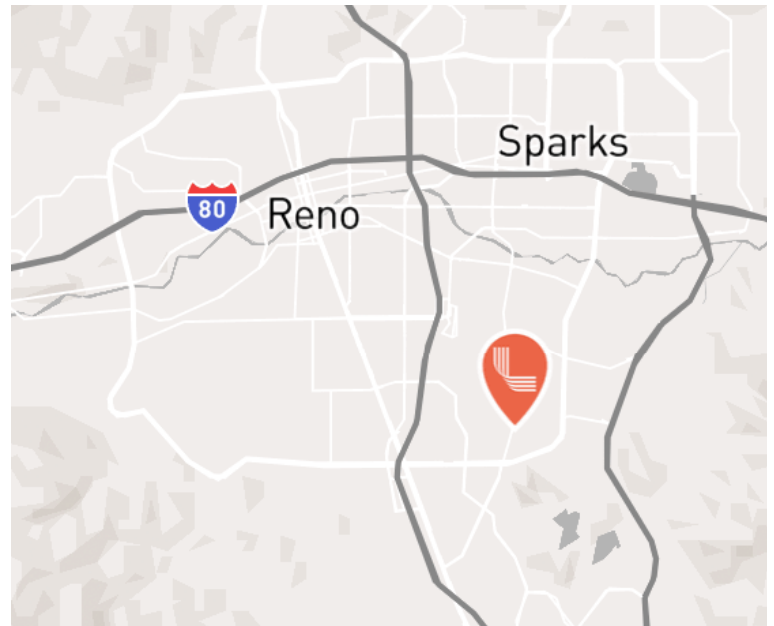
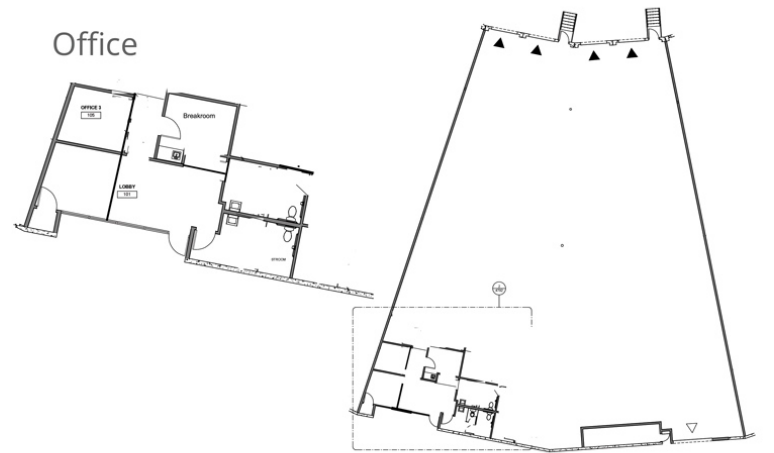
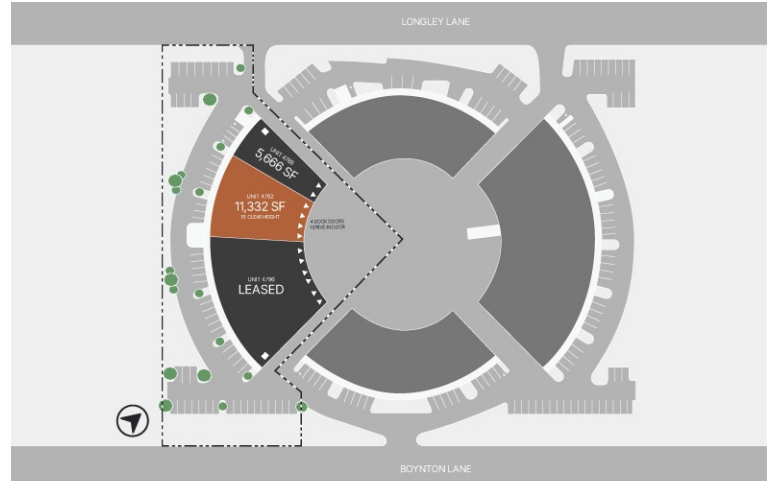
Located in Reno's Airport submarket, 4792 Longley Lane is a professionally managed facility built in 1986. Includes 18' clear height, four dock-high door, one drive-in door, 1,206 SF of office space, and a .33/3,000 sprinkler rating.

FOR LEASE

±11,332 SF

Steve Kucera, SIOR, CCIM
steve.kucera@colliers.com
(775) 823-4665
NV Lic. # S.0172550

Makenna Backstrom
makenna.backstrom@colliers.com
(775) 823-6622
NV Lic. # S.0194236



This is not an offer or acceptance of an offer to lease space. A lease will only be offered or made in a written agreement signed by landlord. No representation or warranty of any kind is made by landlord unless set forth in a written definitive lease executed by the landlord.

AIRPORT SUBMARKET