

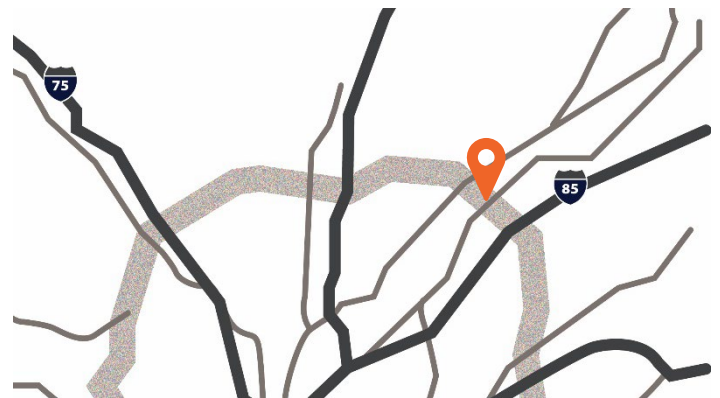


2605 N. Berkeley Lake Rd, Ste 600, Duluth, GA 30096

Opportunity

- 13,870 sf available
- 2,111 sf office space
- 190,380 total building size
- 30' clear height
- 250' building depth
- 40'x50' Column Spacing
- 110' Truck Court
- 2 DH, 1 DI
- ESFR Sprinkler System

Location



35 Miles to
Airport



2.2 Miles to
I-85

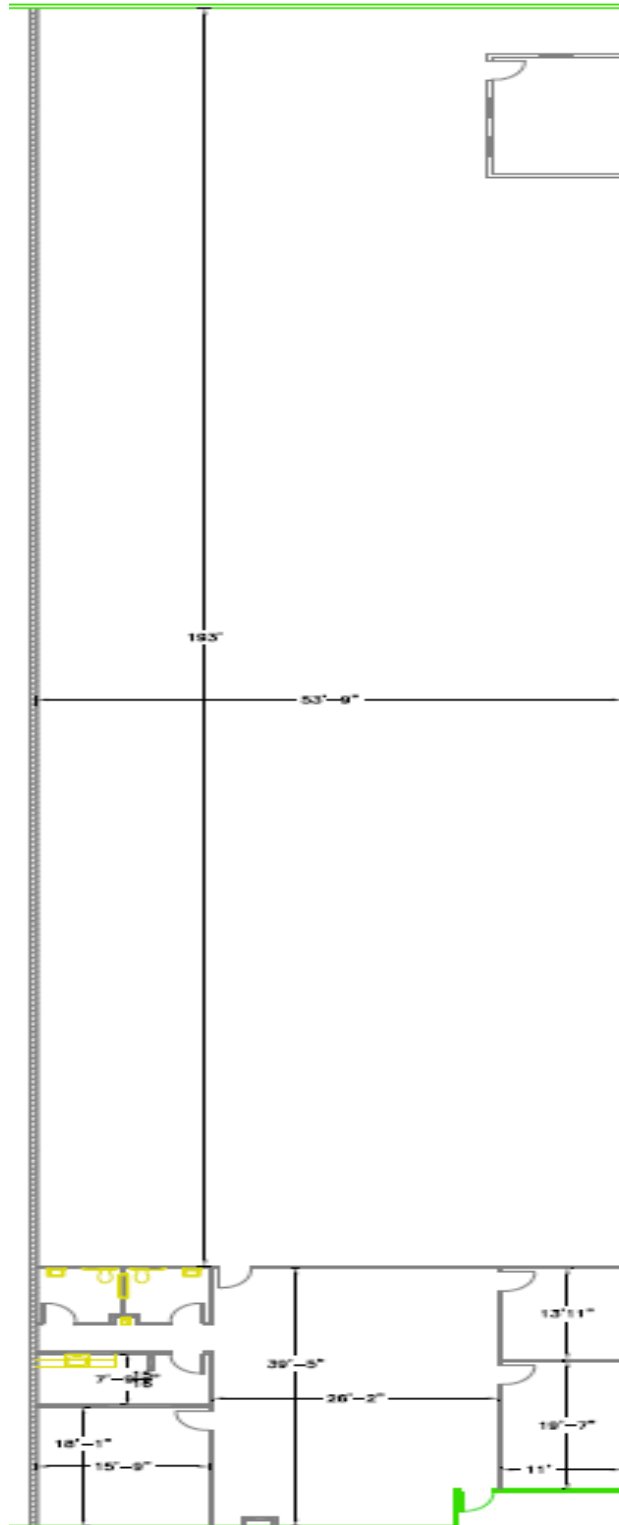


10 Miles to
I-285

For further information

Ben Parker, SIOR
ben.parker@avisonyoung.com
+1 404 409 5678

Benjamin Yim
benjamin.yim@avisonyoung.com
+1 678 777 0275



For further information

Owned by:



Ben Parker, SIOR
ben.parker@avisonyoung.com
+1 404 409 5678

Benjamin Yim
benjamin.yim@avisonyoung.com
+1 678 777 0275

