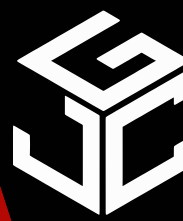


FOR LEASE

480 24th Ave NW,
Suite 146-156
Norman, OK 73069



Johnson

Commercial Group

JohnsonCommercialGroup.com



Offering Summary

Suite SF: 7,685 SF

Lease Rate: \$18 SF/YR

NNN Rate: \$4.50 SF/YR

Zoning: C-2

Year Built: 2010

Traffic Count: 18,451

Building Size: 85,726 SF

Property Overview

Suite 146-156 at Madison Square offers 7,685 SF of expansive office space designed for larger users. The layout includes three large open areas previously configured with cubicles, six private offices, and a utility closet, providing flexibility for a variety of office setups. Additional features include five restrooms and two kitchenettes, offering convenience for employees and clients alike. This suite is ideal for companies seeking a sizable, functional space in a high-visibility NW Norman location with room to grow and customize.

Chris Johnson
chris@jcgok.com
405.435.3572



BRICK & BEAM
REALTY

Sally Allen
sally@jcgok.com
405.623.7920

FOR LEASE

480 24th Ave NW,
Suite 146-156
Norman, OK 73069



Johnson

Commercial Group

JohnsonCommercialGroup.com



Chris Johnson
chris@jcgok.com
405.435.3572



Sally Allen
sally@jcgok.com
405.623.7920

FOR LEASE

480 24th Ave NW,
Suite 146-156
Norman, OK 73069



Johnson

Commercial Group

JohnsonCommercialGroup.com



Chris Johnson
chris@jcgok.com
405.435.3572



Sally Allen
sally@jcgok.com
405.623.7920

FOR LEASE

480 24th Ave NW,
Suite 146-156
Norman, OK 73069



Johnson

Commercial Group

JohnsonCommercialGroup.com



Chris Johnson
chris@jcgok.com
405.435.3572



BRICK & BEAM
REALTY

Sally Allen
sally@jcgok.com
405.623.7920

FOR LEASE

480 24th Ave NW,
Suite 146-156
Norman, OK 73069



Johnson

Commercial Group

JohnsonCommercialGroup.com



Chris Johnson
chris@jcgok.com
405.435.3572



Sally Allen
sally@jcgok.com
405.623.7920

FOR LEASE

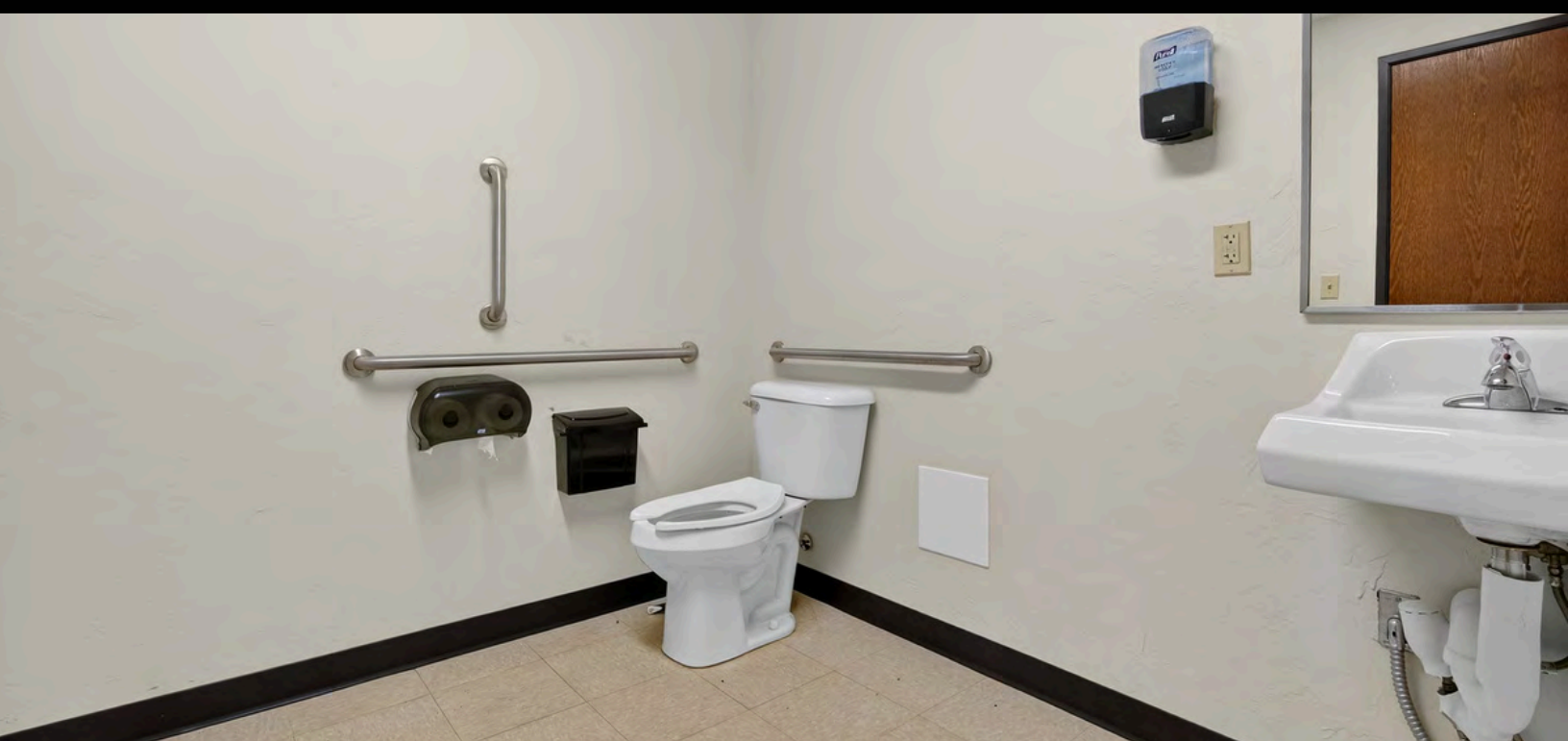
480 24th Ave NW,
Suite 146-156
Norman, OK 73069



Johnson

Commercial Group

JohnsonCommercialGroup.com



Chris Johnson
chris@jcgok.com
405.435.3572

 **BRICK & BEAM**
REALTY

Sally Allen
sally@jcgok.com
405.623.7920

FOR LEASE

480 24th Ave NW,
Suite 146-156
Norman, OK 73069



Johnson

Commercial Group

JohnsonCommercialGroup.com



Chris Johnson
chris@jcgok.com
405.435.3572



Sally Allen
sally@jcgok.com
405.623.7920

FOR LEASE

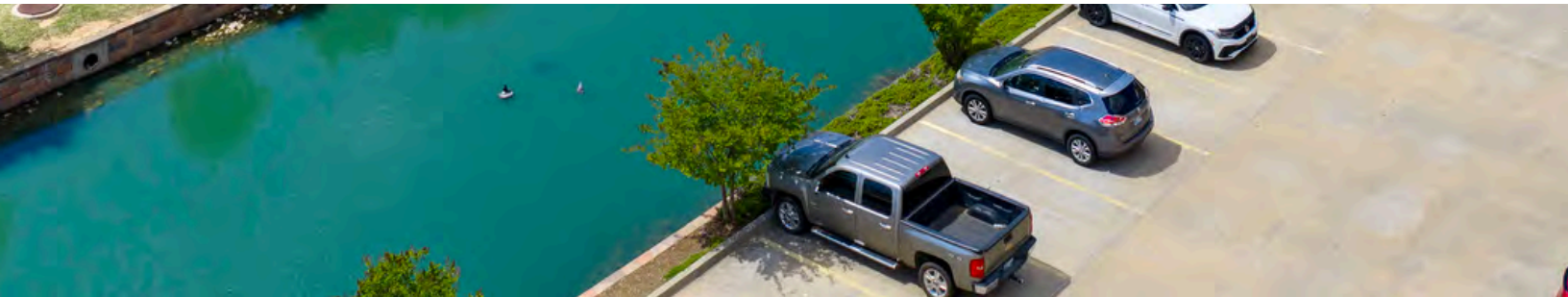
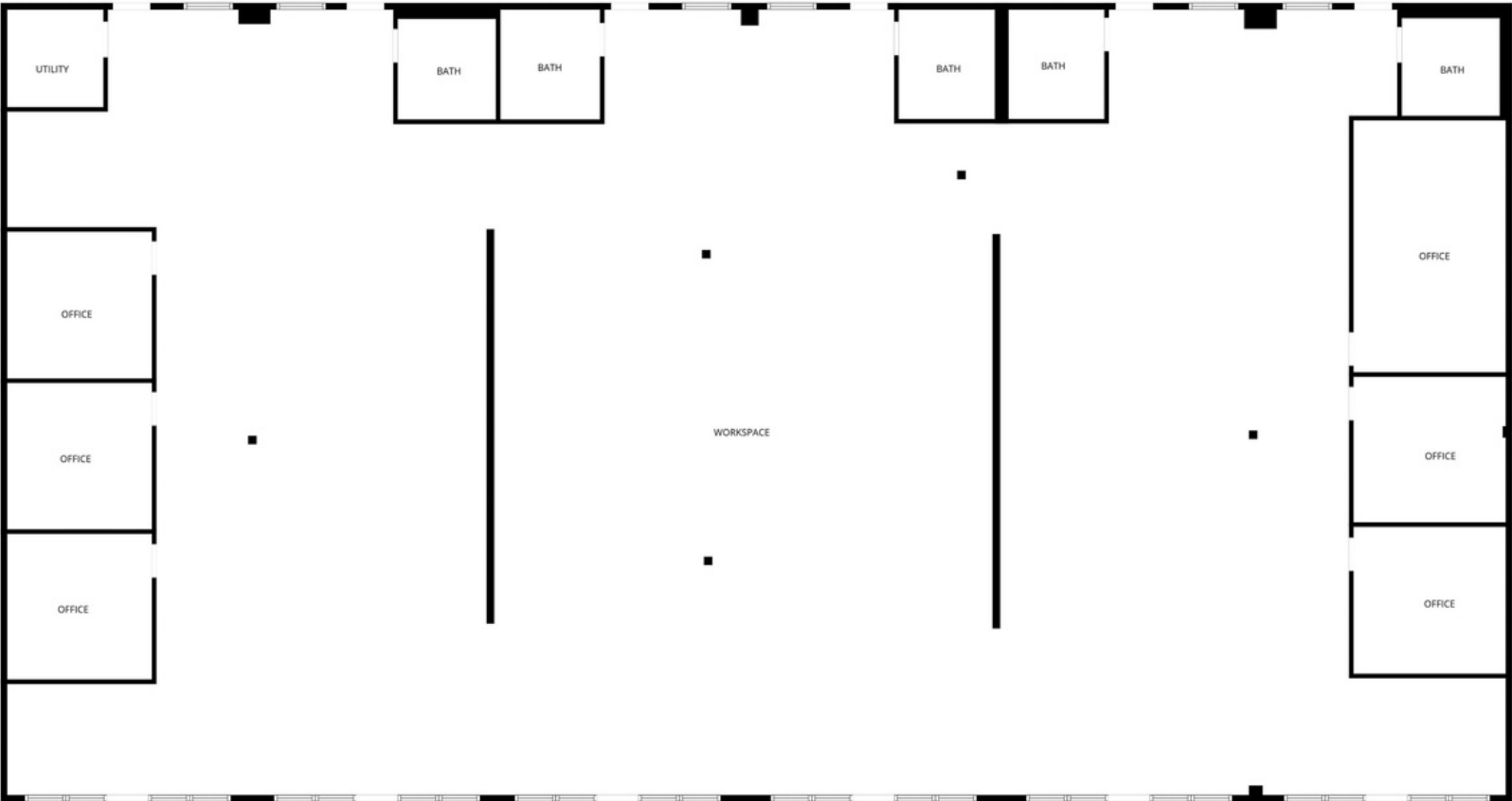
480 24th Ave NW,
Suite 146-156
Norman, OK 73069



Johnson

Commercial Group

JohnsonCommercialGroup.com



Chris Johnson
chris@jcgok.com
405.435.3572



Sally Allen
sally@jcgok.com
405.623.7920

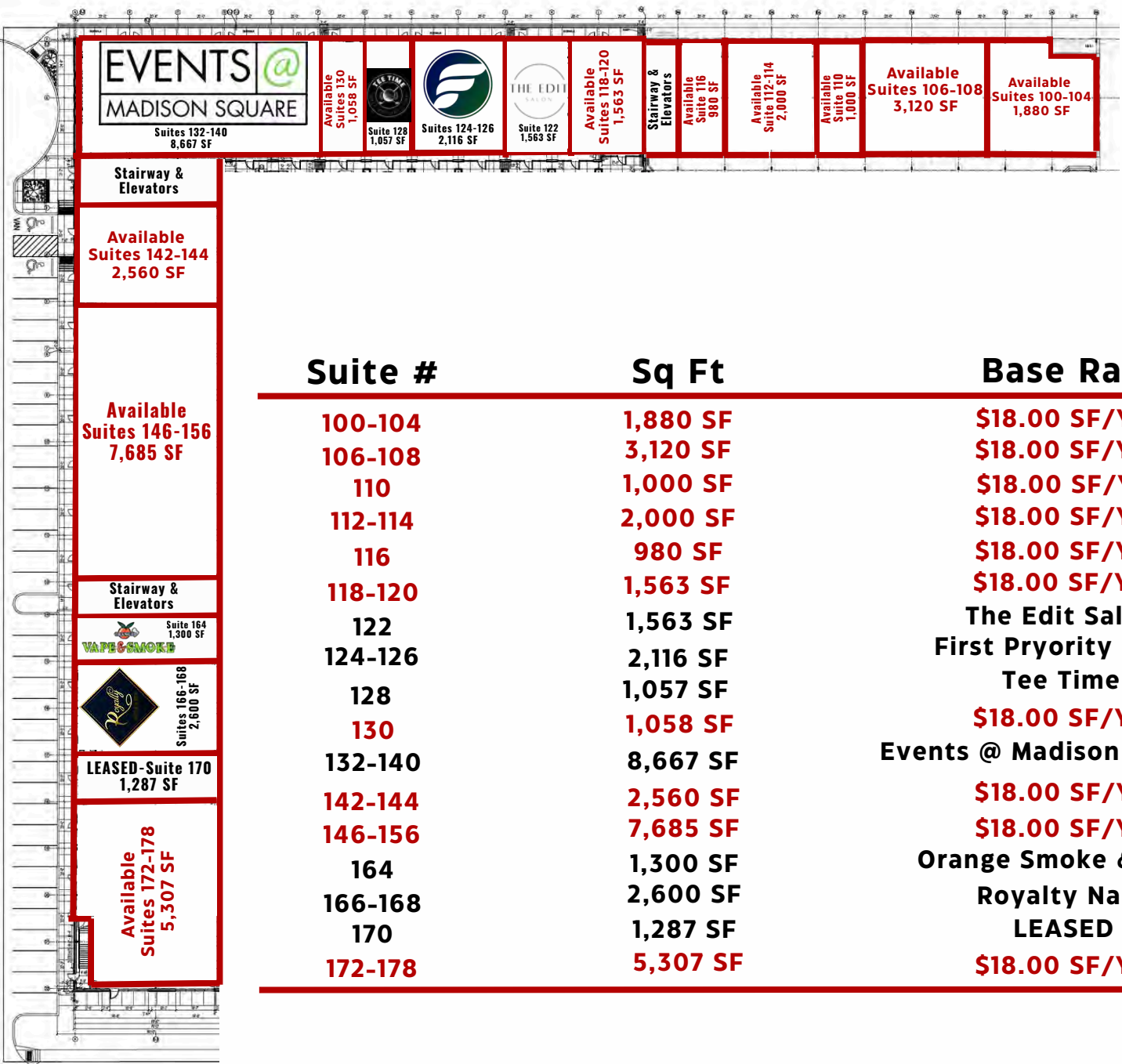
FOR LEASE

**First Floor
Suites 100-178**



Johnson
Commercial Group

JohnsonCommercialGroup.com



Suite #	Sq Ft	Base Rate
100-104	1,880 SF	\$18.00 SF/YR
106-108	3,120 SF	\$18.00 SF/YR
110	1,000 SF	\$18.00 SF/YR
112-114	2,000 SF	\$18.00 SF/YR
116	980 SF	\$18.00 SF/YR
118-120	1,563 SF	\$18.00 SF/YR
122	1,563 SF	The Edit Salon
124-126	2,116 SF	First Priority Bank
128	1,057 SF	Tee Time
130	1,058 SF	\$18.00 SF/YR
132-140	8,667 SF	Events @ Madison Square
142-144	2,560 SF	\$18.00 SF/YR
146-156	7,685 SF	\$18.00 SF/YR
164	1,300 SF	Orange Smoke & Vape
166-168	2,600 SF	Royalty Nails
170	1,287 SF	LEASED
172-178	5,307 SF	\$18.00 SF/YR

Chris Johnson
chris@jcgok.com
405.435.3572



Sally Allen
sally@jcgok.com
405.623.7920

FOR LEASE

Second Floor
Suites 210-272



Johnson
Commercial Group

JohnsonCommercialGroup.com

Suites 210-272
39,983 SF of Available
Contiguous Space

Executive Suites
Fully Leased

Suite

Sq Ft

Base Rate

210	1,007 SF	\$16.00 SF/YR
212	1,007 SF	\$16.00 SF/YR
214	1,007 SF	\$16.00 SF/YR
216	1,237 SF	\$16.00 SF/YR
218	1,027 SF	\$16.00 SF/YR
220	1,048 SF	\$16.00 SF/YR
222	1,048 SF	\$16.00 SF/YR
224	1,048 SF	\$16.00 SF/YR
226	1,048 SF	\$16.00 SF/YR
228	1,048 SF	\$16.00 SF/YR
230	1,048 SF	\$16.00 SF/YR
232-246	6,904 SF	\$16.00 SF/YR
248-258	10,306 SF	\$16.00 SF/YR
260-266	7,000 SF	\$16.00 SF/YR
268-272	4,200 SF	\$16.00 SF/YR

Chris Johnson
chris@jcgok.com
405.435.3572

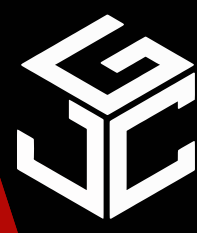


BRICK & BEAM
REALTY

Sally Allen
sally@jcgok.com
405.623.7920

FOR LEASE

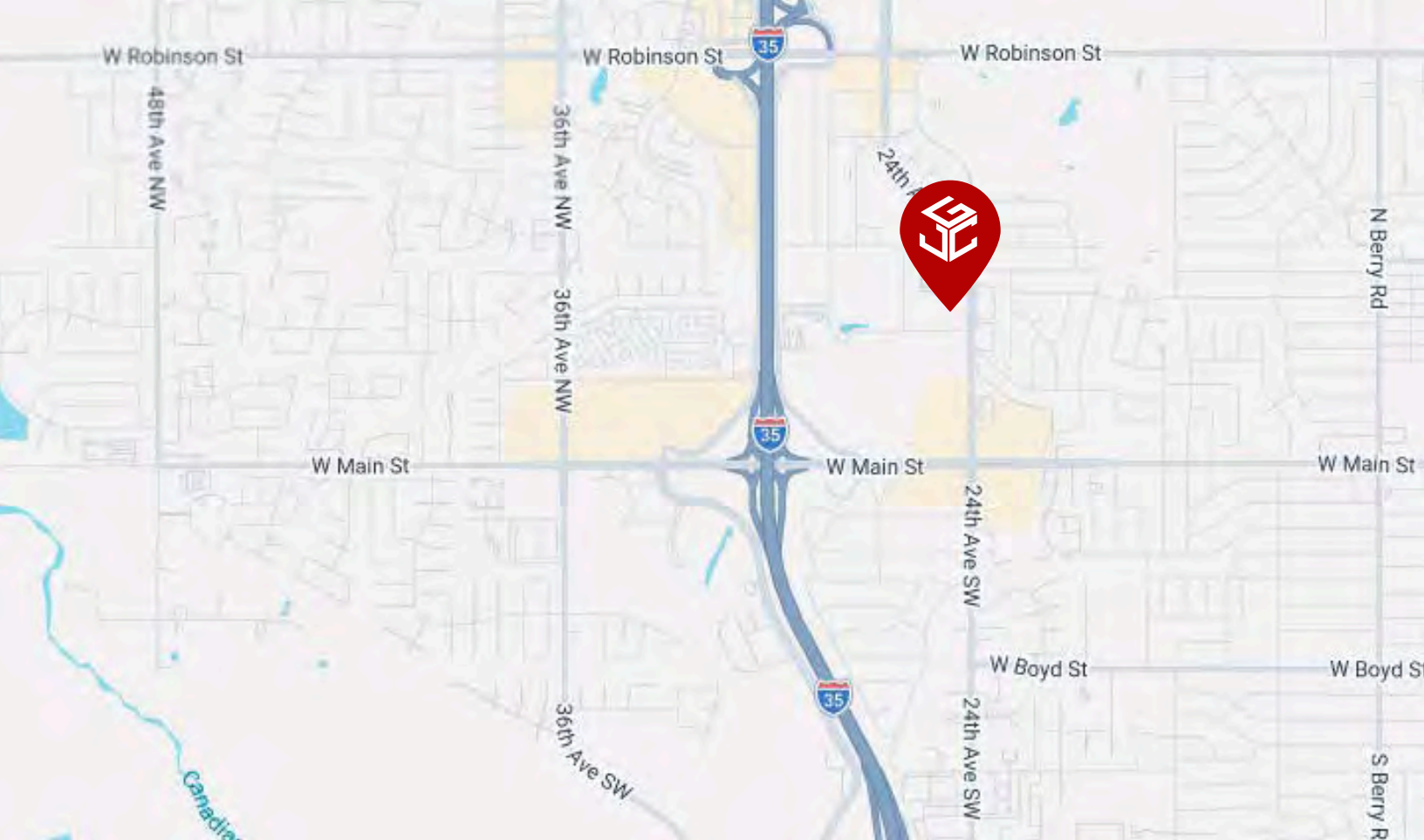
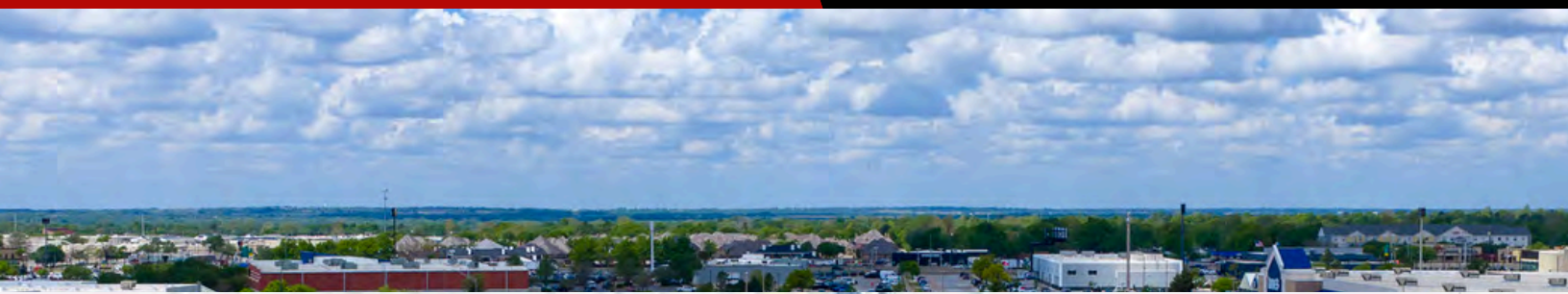
480 24th Ave NW,
Norman, OK 73069



Johnson

Commercial Group

JohnsonCommercialGroup.com



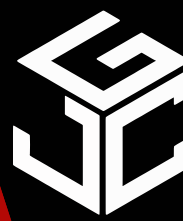
Chris Johnson
chris@jcgok.com
405.435.3572



Sally Allen
sally@jcgok.com
405.623.7920

FOR LEASE

480 24th Ave NW,
Norman, OK 73069



Johnson

Commercial Group

JohnsonCommercialGroup.com



Disclaimer

A real estate broker is not authorized to give legal or tax advice. No representation is made by Johnson Commercial Group, its agents or employees, as to the legal effect or tax consequences of the information contained herein or any transaction relating thereto. Although all information furnished regarding property sales or financing options are from sources deemed to be reliable, such information has not been verified and no express representation is made on, or is in any way implied as to the accuracy thereof and is subject to errors, omissions, change of price, or other conditions prior to sale or withdrawal without notice.

Chris Johnson
chris@jcgok.com
405.435.3572



Sally Allen
sally@jcgok.com
405.623.7920