

# 531

## HOWARD

*San Francisco, CA*

# Highlights

New creative 2,000 SF suite

Conveniently located within 1-2 blocks of Transbay Terminal/Park and BART/MUNI

Historic brick and timber building

Flexible lease terms



**Available Now**

**Colliers**

531 HOWARD STREET | SAN FRANCISCO

# Second Floor

±2,000 SF

±2,000 SF, full floor

Furnished space opportunity

Furnished with 12 desks

Open plan

High, exposed ceiling

Hardwood floors

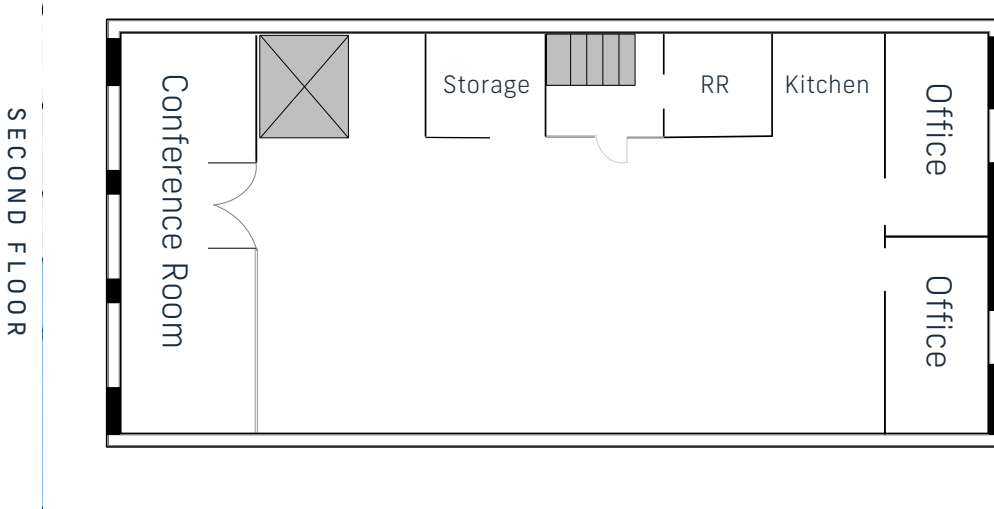
Kitchen

Private restroom with upgraded fixtures

Secure entry

Storage room

Exposed brick walls







SALESFORCE PARK

SALESFORCE

INTERSTATE  
80

MARKET STREET

# 531 HOWARD *San Francisco, CA*

## Exclusive Advisors

Brad Van Blois  
+1 415 288 7845  
brad.vanblois@colliers.com  
Lic. 01208137

*This document/email has been prepared by Colliers for advertising and general information only. Colliers makes no guarantees, representations or warranties of any kind, expressed or implied, regarding the information including, but not limited to, warranties of content, accuracy and reliability. Any interested party should undertake their own inquiries as to the accuracy of the information. Colliers excludes unequivocally all inferred or implied terms, conditions and warranties arising out of this document and excludes all liability for loss and damages arising there from. This publication is the copyrighted property of Colliers and /or its licensor(s). © 2026. All rights reserved. This communication is not intended to cause or induce breach of an existing listing agreement.*

