

GLADDEN FARMS | NEC OF TANGERINE RD & LON ADAMS RD | MARANA, AZ

Projected Opening Q3 2024

**ACRES:**

±21.79

SQUARE FEET:

±155,300

ZONING:

COMMERCIAL

ADDRESS:

NEC OF N TANGERINE RD & N LON ADAMS RD, MARANA, AZ

SUMMARY:

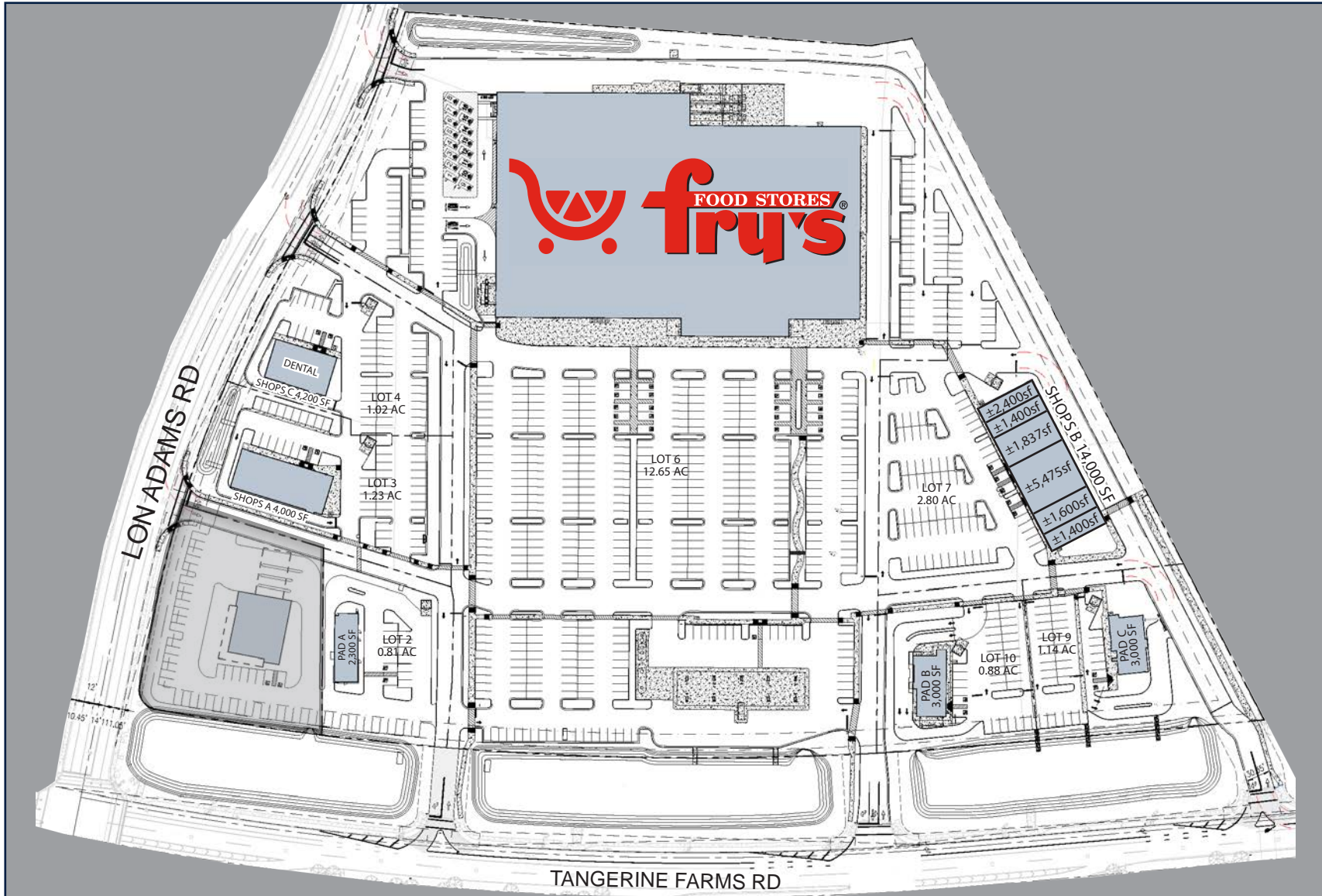
This grocery anchored neighborhood center is in the heart of the Gladden Farms subdivision located in the rapidly growing Tucson suburb of Marana, AZ. Situated on the corner of Lon Adams Rd and Tangerine Rd. just off Interstate 10 this area boasts an average daily traffic count of nearly 88,000 VPD. The center's seven mile trade area contains a population of nearly 40,000 with an average household income of over \$100,000 per year.



2415 E Camelback Rd, Suite 900
Phoenix, Arizona, 85016
www.BarclayGroup.com

Brett Sheets
Senior Vice President
Leasing
602.224.4147 Direct
480.596.9399 Office
bsheets@barclaygroup.com

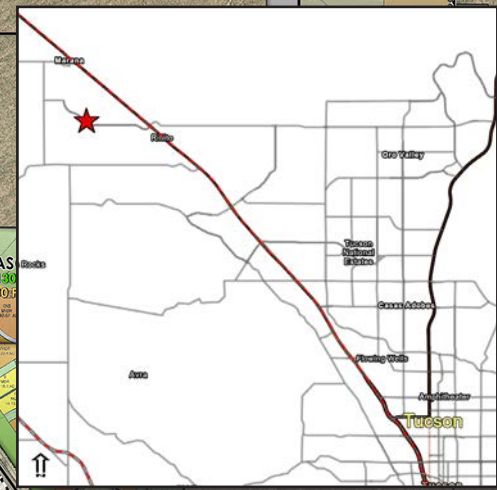
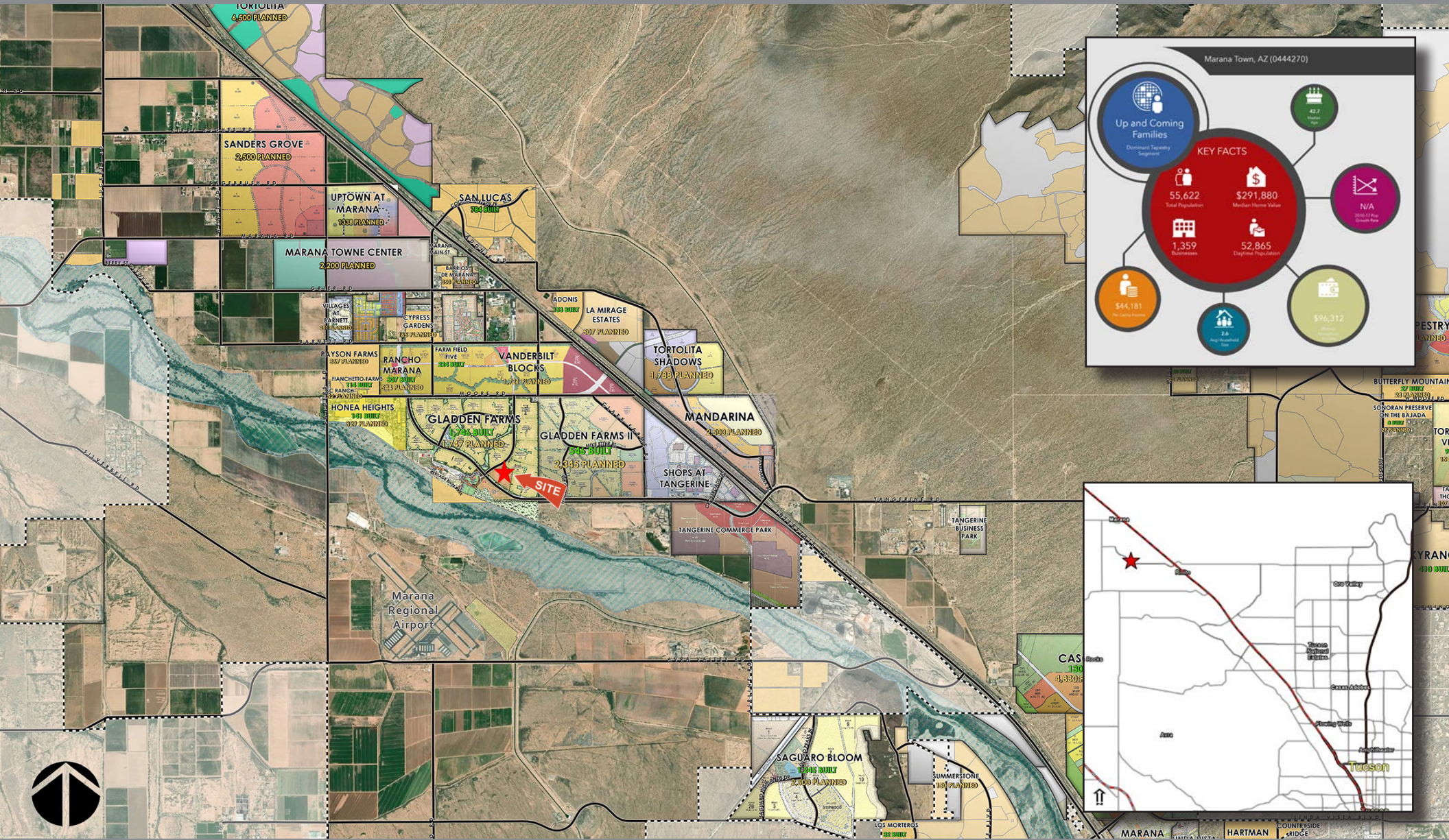
GLADDEN FARMS | SITE



2415 E Camelback Rd, Suite 900
Phoenix, Arizona, 85016
www.BarclayGroup.com

Brett Sheets
Senior Vice President
Leasing
602.224.4147 Direct
480.596.9399 Office
bsheets@barclaygroup.com

GLADDEN FARMS | MAPS & DEMOS



2415 E Camelback Rd, Suite 900
Phoenix, Arizona, 85016
www.BarclayGroup.com

Brett Sheets
Senior Vice President
Leasing
602.224.4147 Direct
480.596.9399 Office
bsheets@barclaygroup.com

The information presented was obtained from sources deemed reliable; however, Barclay Group makes no warranty or representation, expressed or implied, as to the accuracy of the information contained herein, and the same is submitted to errors, omissions, change of price, rental or conditions, withdrawal without notice, and to any special listing conditions imposed by our principals.