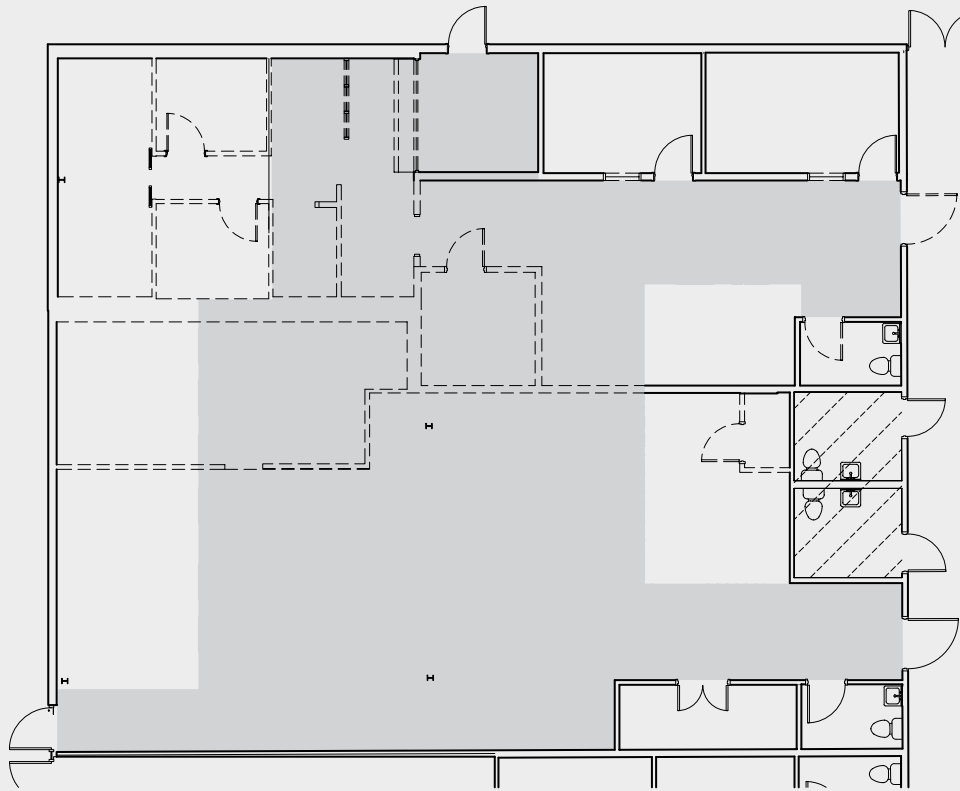
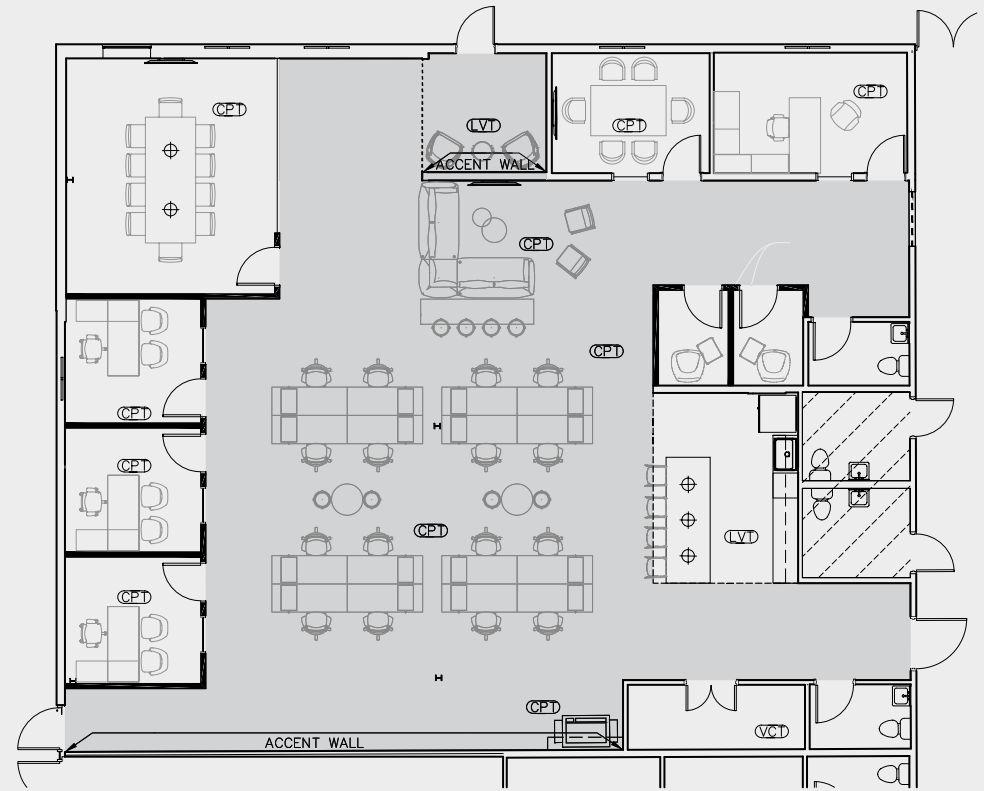


3,989 SF OFFICE SPACE
1123 ZONOLITE RD | SUITE 17 & 18 | ATLANTA GA 30306



DEMOLITION PLAN



PRELIMINARY PLAN

SCHEDULE A TOUR TODAY BY CONTACTING:

ELLIS MURRAY
404.400.6633
ellis.murray@capitalre.com

BENNETT GOTTLIEB
404.400.7192
bennett.gottlieb@capitalre.com

JOHN P. THORNTON
404.400.7451
john.thornton@capitalre.com

1123 ZONOLITE RD
SUITE 17 & 18