

INDUSTRIAL FOR LEASE

7,054 SF



5788 WARD COURT

VIRGINIA BEACH, VA 23455

AIRPORT INDUSTRIAL PARK



THALHIMER

PROPERTY HIGHLIGHTS

Located in Virginia Beach's established industrial market, 5788 Ward Court offers a functional mix of office and warehouse space with excellent accessibility and on-site parking. The property is well-suited for a variety of industrial, distribution, and service-oriented users seeking a flexible and efficient facility.

Available SF: 7,054 SF

Office: 3,250 SF

Zoning: I-L, Light Industrial

Clear Height: 23'

Power: 3-Phase

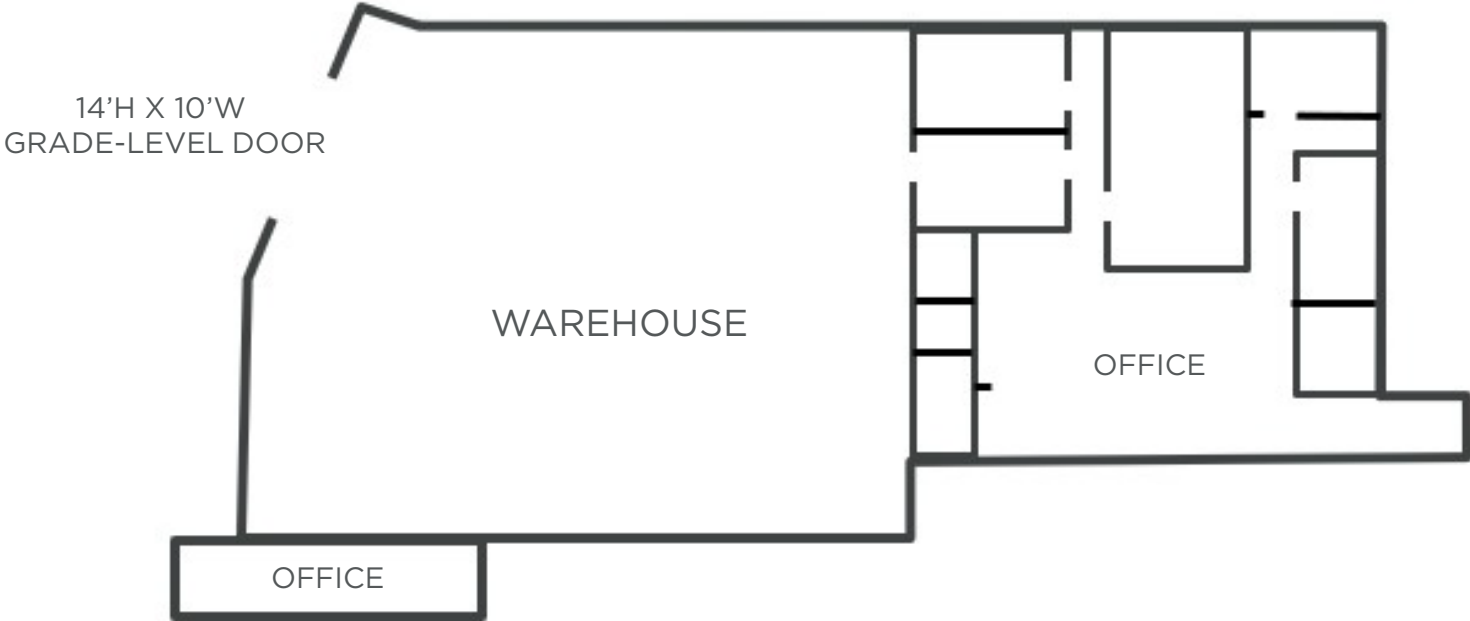
Loading: One (1) 14'h x 10'w grade-level door

Parking: ±20 employee spaces

Lease Rate: \$9.50 PSF, NNN

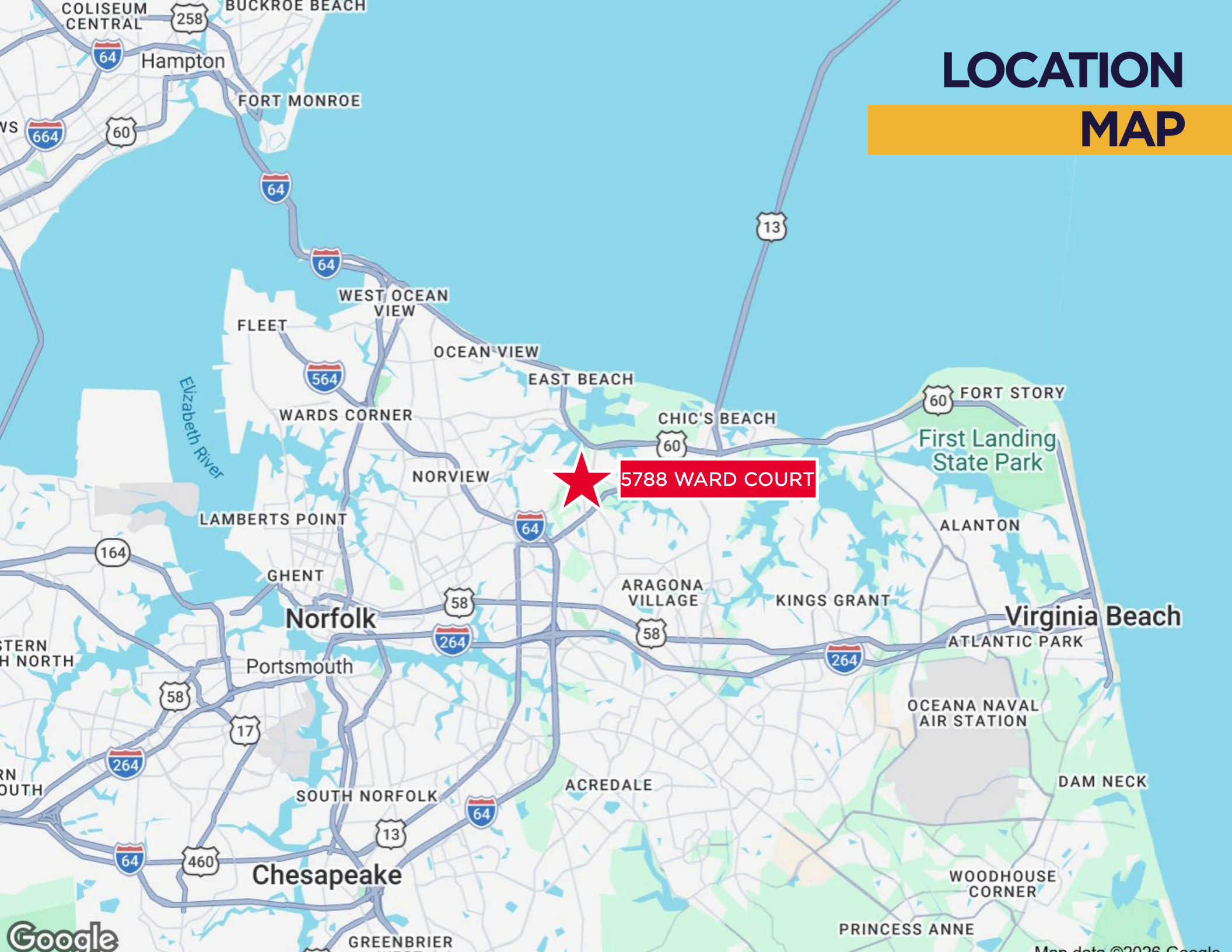
OPEX: \$1.65 PSF





FLOOR PLAN
7,054 SF

LOCATION MAP



5788 WARD COURT



CONTACT INFORMATION

TAYLOR ANDERSON

Industrial Advisory
+1 757 213 4150
taylor.anderson@thalhimer.com



**CUSHMAN &
WAKEFIELD**

THALHIMER

The Town Center of Virginia Beach
222 Central Park Avenue
Suite 1500
Virginia Beach, VA 23462
thalhimer.com

Independently Owned and Operated / A Member of the Cushman & Wakefield Alliance

Cushman & Wakefield | Thalhimer © 2026. No warranty or representation, express or implied, is made to the accuracy or completeness of the information contained herein, and same is submitted subject to errors, omissions, change of price, rental or other conditions, withdrawal without notice, and to any special listing conditions imposed by the property owner(s). As applicable, we make no representation as to the condition of the property (or properties) in question.