



FOR SUBLEASE
Call for Details



SITE 8.3± ACRES

- Zoned HI under the Berkley County
- View zoning ordinance [here](#)
- Additional 3 acres of yard space will be available



SHOP 7,000± SF

- 3 drive-in bays

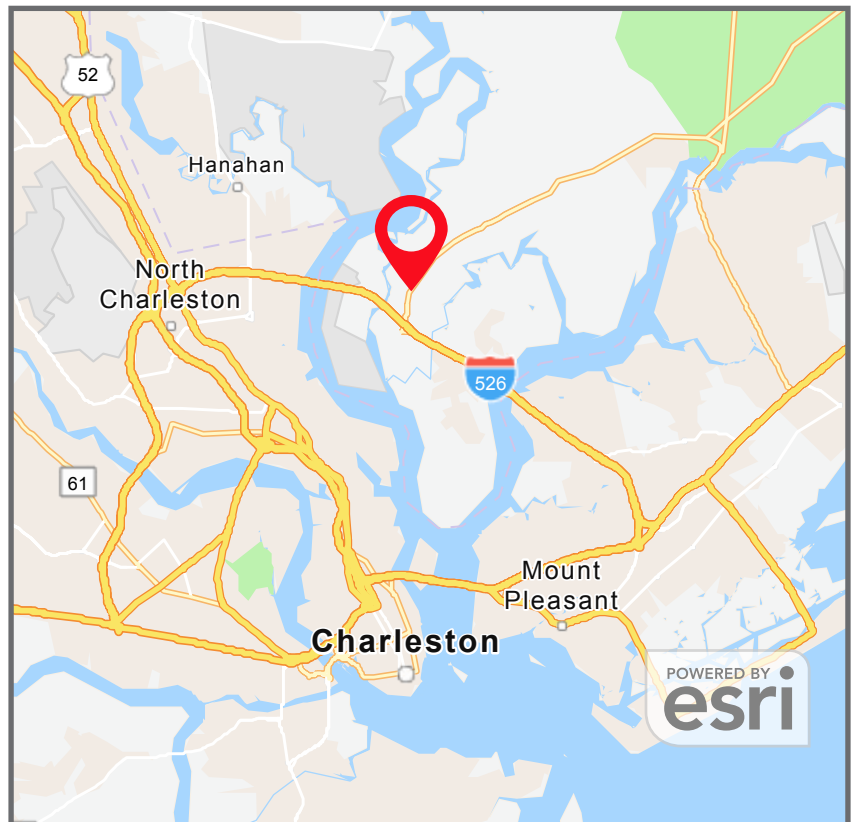


OFFICE 2,000± SF



LOCATION

- Well located with convenient I-525 access



CONTACT US



Eric McFarlin
Principal
336.996.2550
ericm@burrtemkin.com

Parker Dotson
Broker
336.682.2560
parker@burrtemkin.com

935 E. Mountain St.
Suite O
Kernersville, NC 27284



CONTACT US



Eric McFarlin
Principal
336.996.2550
ericm@burrtemkin.com

Parker Dotson
Broker
336.682.2560
parker@burrtemkin.com

935 E. Mountain St.
Suite O
Kernersville, NC 27284



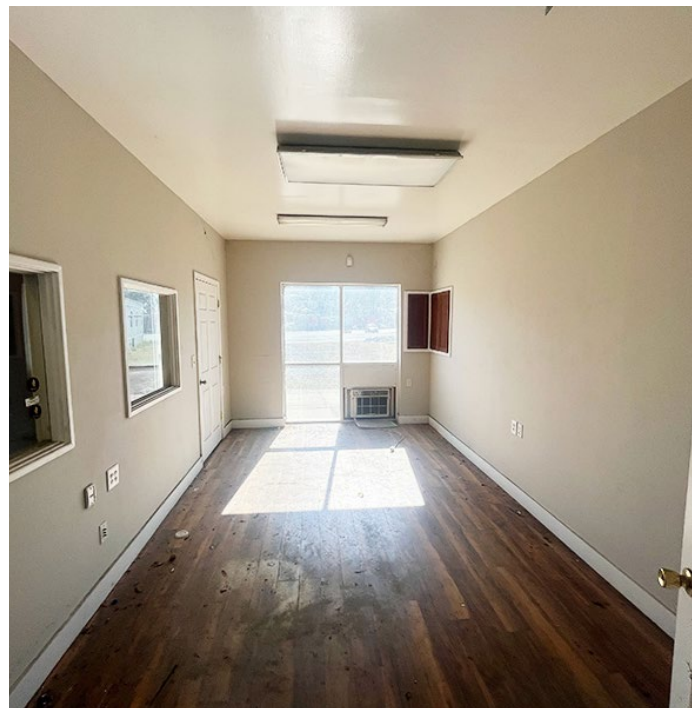
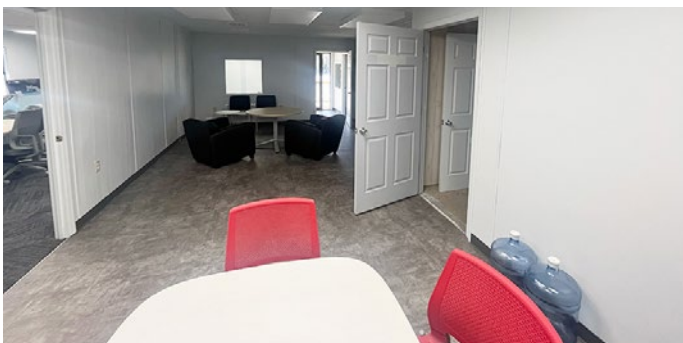
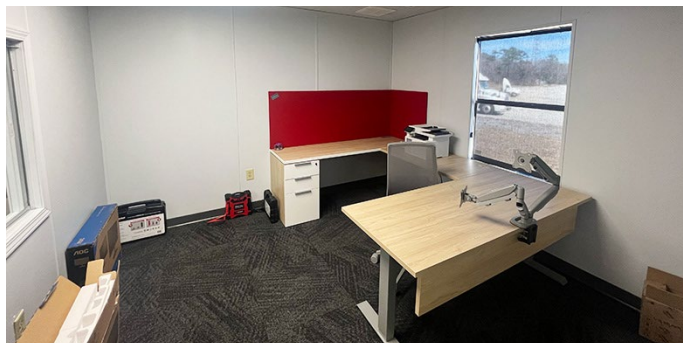
CONTACT US



Eric McFarlin
Principal
336.996.2550
ericm@burrttemkin.com

Parker Dotson
Broker
336.682.2560
parker@burrttemkin.com

935 E. Mountain St.
Suite O
Kernersville, NC 27284



CONTACT US



Eric McFarlin
Principal
336.996.2550
ericm@burrttemkin.com

Parker Dotson
Broker
336.682.2560
parker@burrttemkin.com

935 E. Mountain St.
Suite O
Kernersville, NC 27284



Two adjacent outdoor storage sites will be available for lease, creating an opportunity for expansion from 8± acres to 11± acres.

 **SITE 1**

- 1+ acres
- Available August 2024
- Zoned HI under the Berkley County
- View zoning ordinance [here](#)

 **SITE 2**

- 2+ acres
- Available April 2024
- Zoned HI under the Berkley County
- View zoning ordinance [here](#)



CONTACT US



Eric McFarlin
Principal
336.996.2550
ericm@burrtemkin.com

Parker Dotson
Broker
336.682.2560
parker@burrtemkin.com

935 E. Mountain St.
Suite O
Kernersville, NC 27284