

±5,000 SF SHOP & 5.5 ACRES OF OUTSIDE STORAGE FOR SUBLEASE

4467 Moreland Avenue, Conley, GA 30288



CHASE BURKS

404.431.1991

chase.burks@oakleyrep.com

JASON FUQUA

770.861.3301

jason.fuqua@oakleyrep.com

oakley
REAL ESTATE PARTNERS

OVERVIEW

4467 MORELAND AVENUE, CONLEY, GA 30288

4467 Moreland Avenue, located in the bustling industrial hub of Conley, GA, presents a prime opportunity for businesses in need of adaptable space. This recently updated industrial storage lot includes a maintenance shop and an office, offering practical and efficient operations. The expansive lot provides ample room for storage and various activities, while the maintenance shop is ideal for equipment upkeep and repairs. The on-site office is well-equipped for handling administrative tasks, ensuring business needs are met conveniently. With its strategic location offering easy access to major transport routes, this property is an excellent choice for enhancing operational efficiency.

SHOP SF	± 5,000 SF
OFFICE SF	± 1,600 SF
LOT SIZE	± 5.5 Acres
LOADING	5 Drive-In Doors
LEASE EXPIRATION	05/30/2030



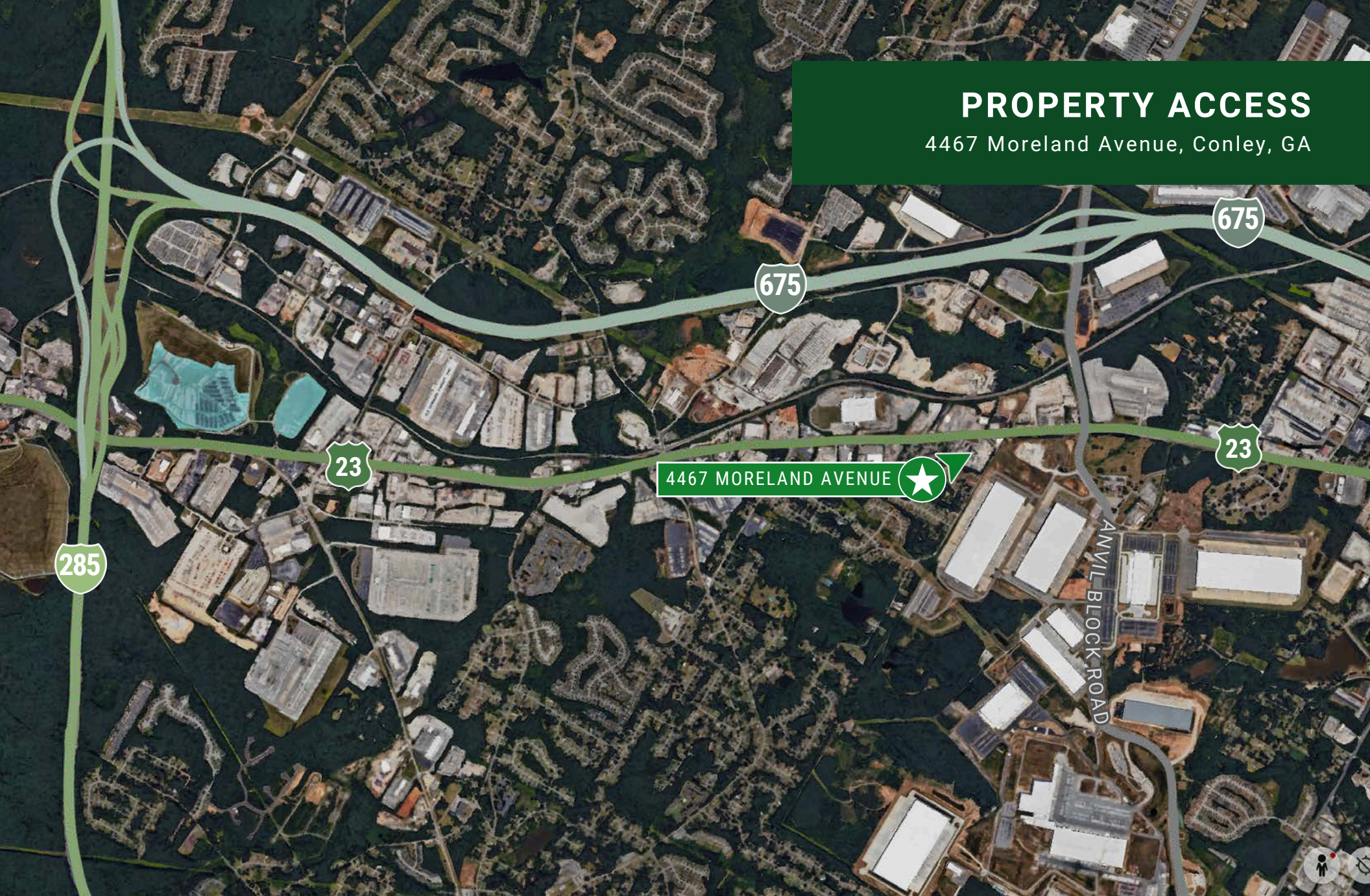
CHASE BURKS
404.431.1991
chase.burks@oakleyrep.com

JASON FUQUA
770.861.3301
jason.fuqua@oakleyrep.com

 **oakley**
REAL ESTATE PARTNERS

PROPERTY ACCESS

4467 Moreland Avenue, Conley, GA



CHASE BURKS

404.431.1991

chase.burks@oakleyrep.com

JASON FUQUA

770.861.3301

jason.fuqua@oakleyrep.com

oakley
REAL ESTATE PARTNERS

±5,000 SF SHOP & 5.5 ACRES OF OUTSIDE STORAGE FOR SUBLEASE

4467 Moreland Avenue, Conley, GA 30288

JASON FUQUA

770.861.3301

jason.fuqua@oakleyrep.com

CHASE BURKS

404.431.1991

chase.burks@oakleyrep.com

JORDAN CAMP

404.969.9487

jordan.camp@oakleyrep.com

