

FOR LEASE

Highly Functional Warehouse Space



1035 Murray Street
Berkeley CA 94710



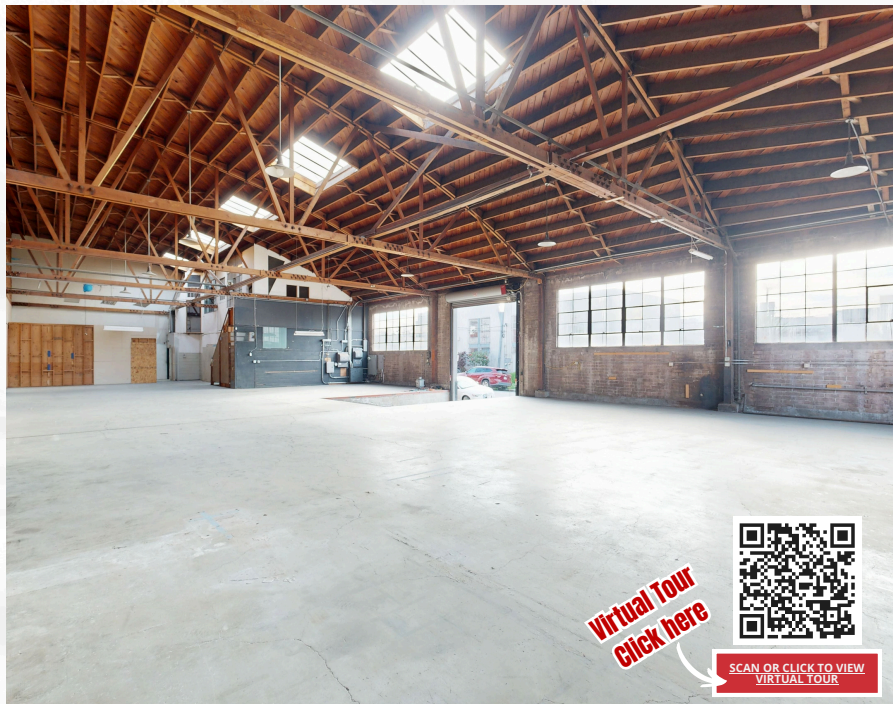
ADDITIONAL OPPORTUNITY

Adjacent Unit 1037 (± 4,590 SF) is also available and can be combined with this unit for a total of ± 10,960 SF.

± 6,370 SF

\$1.55/sf/month
Industrial Gross

- Prime industrial space for lease in the heart of Berkeley.
- Ideal for manufacturing, warehousing, or light industrial use.
- Right off of Ashby Ave with convenient access to both I-80 and I-580 highways.



Virtual Tour
Click here

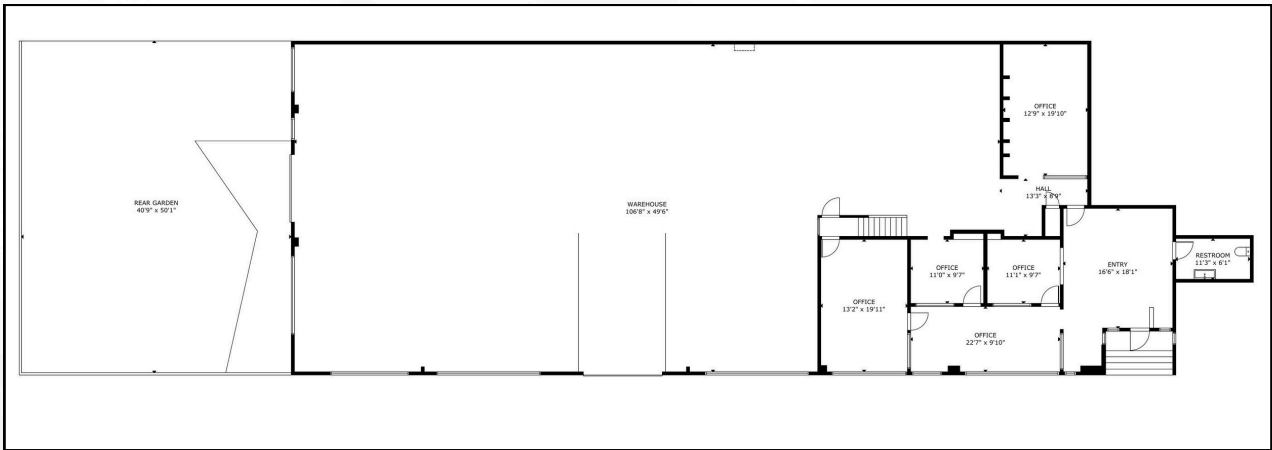
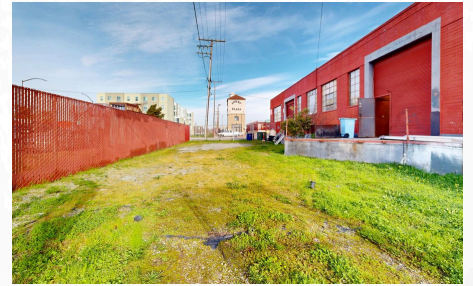
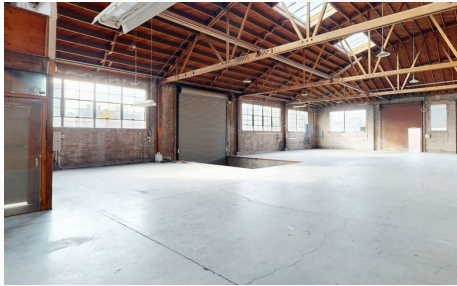
SCAN OR CLICK TO VIEW
VIRTUAL TOUR



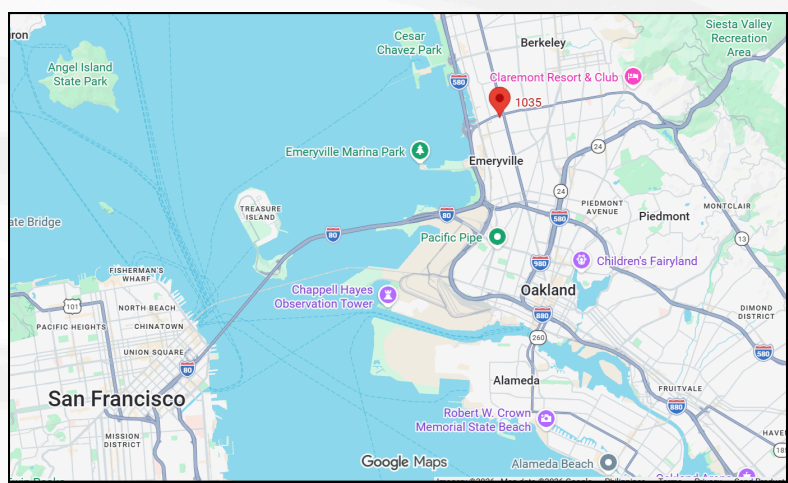
DIGITALLY ENHANCED

Property Features - 1035 Murray St

- ±1,100 SF of front office/reception area
- Excellent natural light
- Mostly open warehouse with high ceilings
- Two (2) roll-up doors (one grade-level and one dock-high)
- Shared loading / parking area
- ±800 SF of bonus mezzanine/storage area
- MULI zoning
- 400 amp, 3-phase power



PROPERTY LOCATION



CONTACT US NOW



Colby Katz
 (510)450-1420
 ckatz@mrecommercial.com
 LIC# 01949015



Francis Griffin
 (510)450-1405
 fgriffin@mrecommercial.com
 LIC# 02016713

www.mrecommercial.com

All information herein is offered in good faith and deemed accurate but not guaranteed.