

**FOR LEASE**

THE ROBERTSON BUILDING

2234 E

7TH AVE

TAMPA, FLORIDA 33605

**JPRE**  
DEVELOPMENT



**CASA YBOR**  
RETAIL | RESIDENTIAL | OFFICE  
EST. 2016 | YBOR CITY, FL



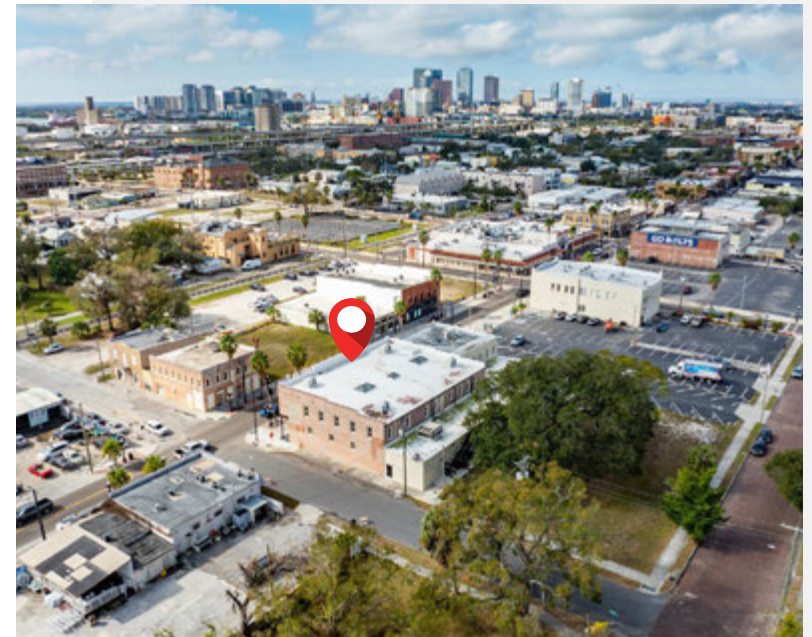
# PROPERTY HIGHLIGHTS

- 12,000 square feet/ DIVISIBLE
- Turnkey restaurant space with fully built out kitchen
- 17 Dedicated parking stalls
- Directly across the street the World-Famous Columbia Restaurant
- All uses considered

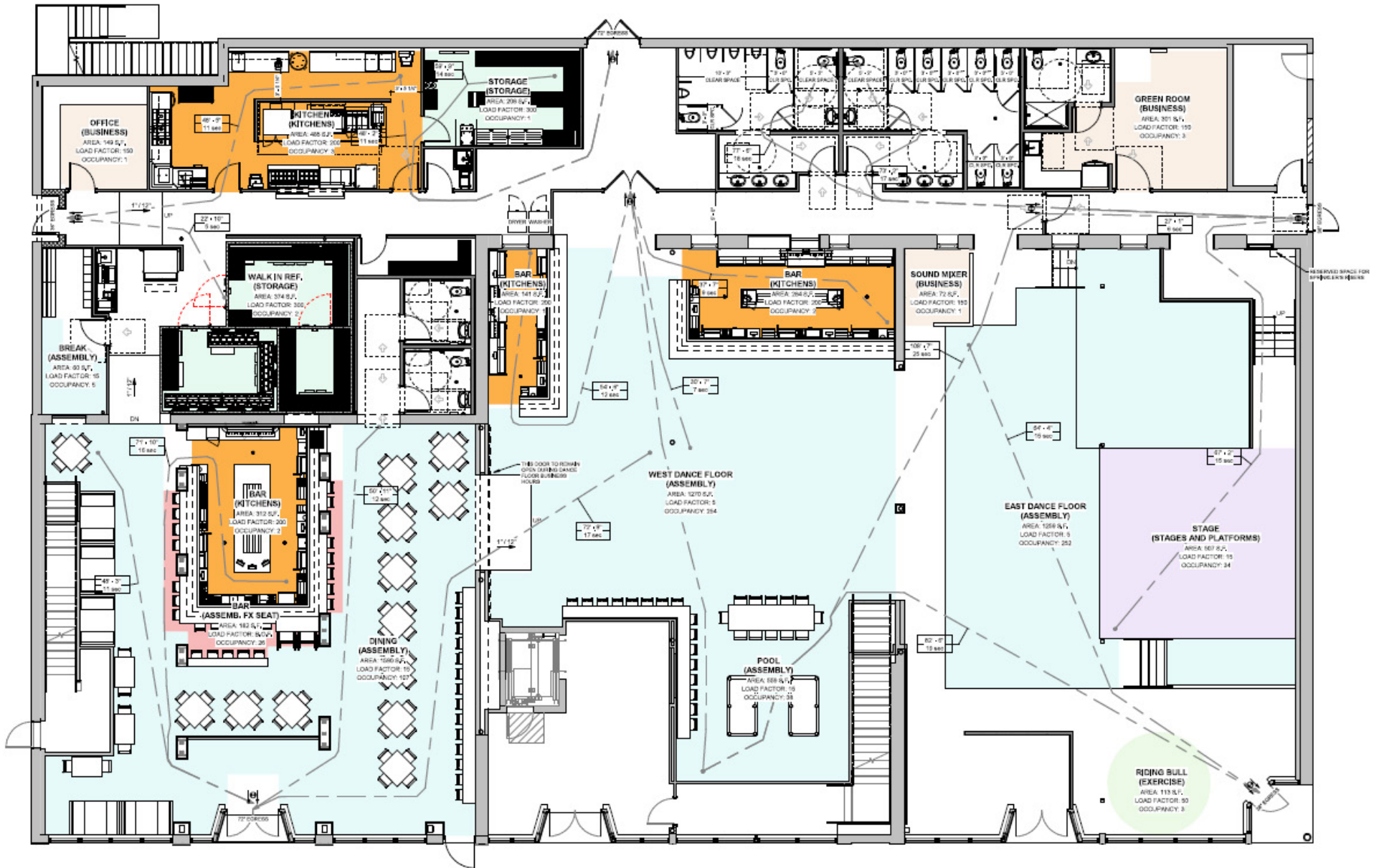


## PROPERTY OVERVIEW

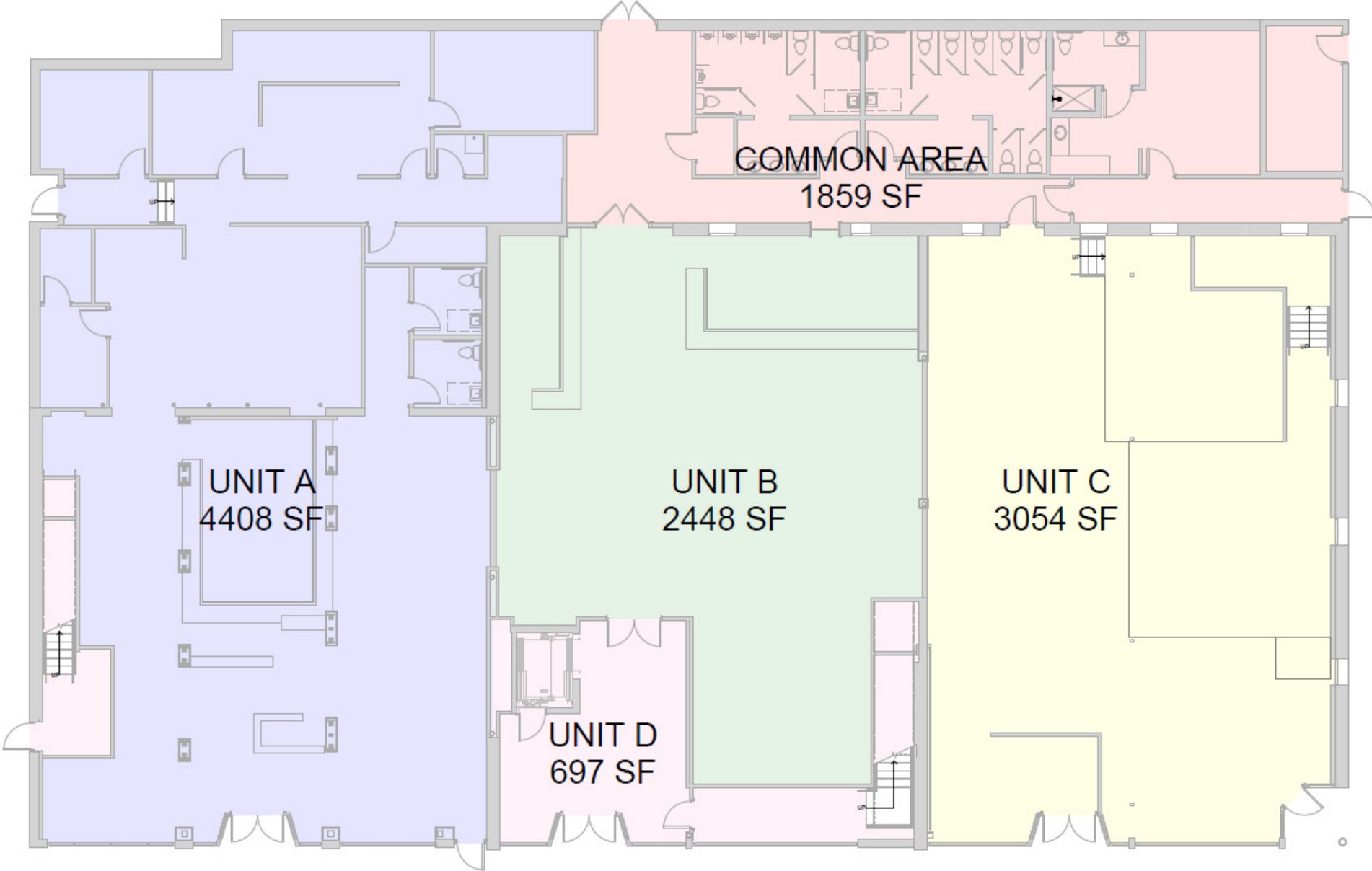
Property Address:	2234 E 7th Ave, Tampa, FL 33605
Lease Rate:	Contact Broker
Available SF:	2,000-12,000 SF (Divisible)
User:	All users



# CURRENT FLOOR PLAN



# REPRESENTATIVE FLOOR PLAN



# TAMPA, FL

Click below to read how Florida, Tampa, and Ybor is THE AREA everyone is talking about!

# #1

**TAMPA NAMED BEST PLACE TO LIVE IN FLORIDA BY FORBES**

**Forbes**  
ADVISOR



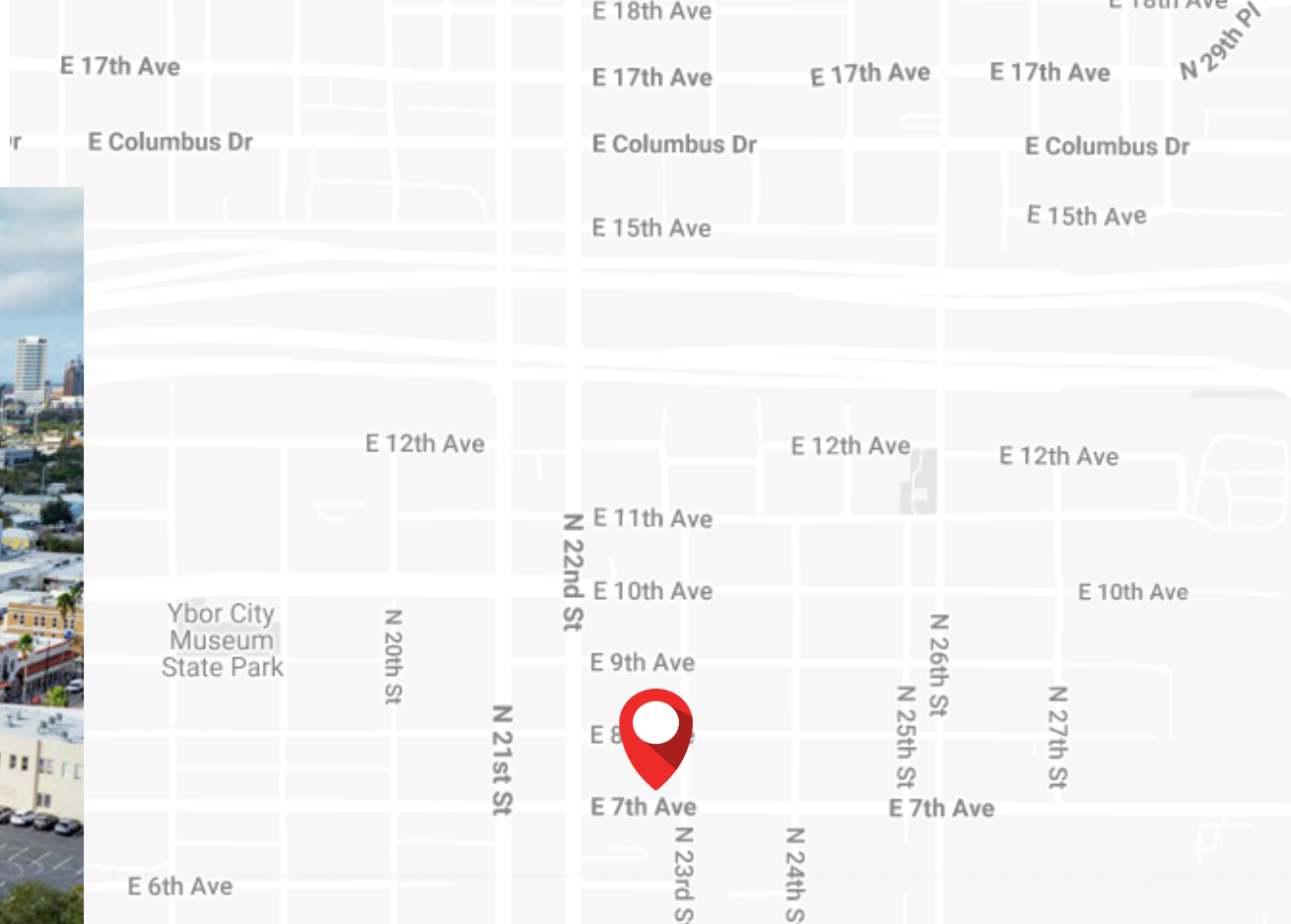
**Tampa's next big splash: history-rich GASWORX, connecting Ybor City and more**

**Florida Ranks #1 in Total Net Migration**

Florida ranked #1 in domestic migration, #2 in international migration, and #1 with the most people moving in per day at 1,218.



# AREA MAP



## WHY YBOR?

Ybor City, a historic district just northeast of downtown Tampa, has rapidly evolved into one of Florida's most dynamic neighborhoods. Known for its rich Cuban and Spanish heritage, the area blends old-world charm with modern vibrancy. Its walkable streets are lined with brick buildings housing a mix of award-winning restaurants, craft breweries, boutique shops, and creative workspaces.

Thanks to ongoing revitalization efforts, like Gasworx, Ybor has become a magnet for young professionals, entrepreneurs, and artists. Proximity to downtown Tampa, strong public transportation options, and incentives for business development make it an attractive location for startups and established companies alike.

With a growing residential population, a thriving nightlife, and a unique cultural identity, Ybor City is both a desirable place to live and a smart choice for business investment.



# LOCAL DEVELOPMENT

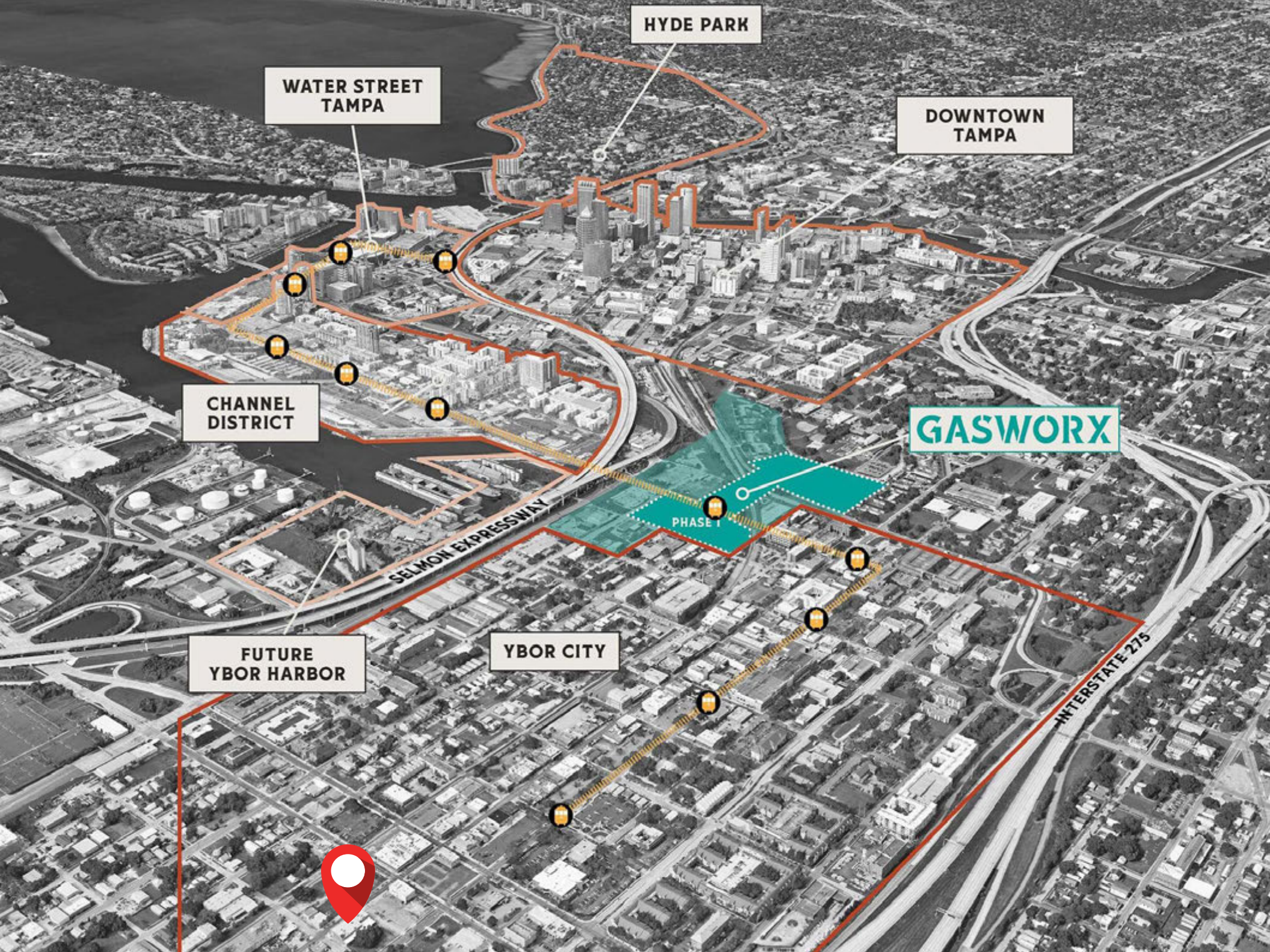
Welcome to Tampa's newest neighborhood, built to honor its oldest, Ybor City. **Gasworx** is a six-million-square-foot mixed-use development that will reconnect a community with its rich cultural heritage and restore Ybor City to its rightful place as one of America's truly great neighborhoods.

With an ambitious commitment to reshape the future of Ybor City, Gasworx spans over 500,000 square feet of office space, bringing 5,000 residences, and 150,000 square feet of retail to life. A blend of purpose and vision, enriched by generous public amenities and robust infrastructure, the neighborhood seamlessly bridges the past and present to create a dynamic, enduring community.

Gasworx sits at the crossroads of Tampa's most vibrant neighborhoods, effortlessly linking Ybor City to Water Street, Downtown, Hyde Park, and the Channel District. With 27 million annual visitors and easy access to major roadways, transit, and walkable streets, it offers seamless connectivity to the city's best dining, culture, and entertainment.

# GASWORX





WATER STREET TAMPA

HYDE PARK

DOWNTOWN TAMPA

CHANNEL DISTRICT

GASWORX

PHASE I

SELMON EXPRESSWAY

FUTURE YBOR HARBOR

YBOR CITY

INTERSTATE 275



## CONTACT

**COOPER ROSARIO**  
COOPERROSARIO@JPREDDEV.COM  
352.223.8319

**JOSHUA PARDUE**  
JOSHPARDUE@JPREDDEV.COM  
646.634.0888

**CLAIRE CHAPIN**  
CLAIRECHAPIN@JPREDDEV.COM  
646.764.3036

**JPRED**  
DEVELOPMENT



### **PARDUE ADVISORY LLC**

This document has been prepared by Pardue Advisory LLC for advertising and general information only and contains information from sources believed reliable but has not been verified for accuracy or completeness. Pardue Advisory LLC makes no guarantees, representations, or warranties of any kind, expressed or implied, regarding the information including, but not limited to, warranties of content, accuracy, and reliability. Any interested party should undertake their own inquiries as to the accuracy of the information. Pardue Advisory LLC excludes unequivocally all inferred or implied terms, conditions and warranties arising out of this document and excludes all liability for loss and damages arising there from.