

15 HILL ST, SOUTHAMPTON

Southampton Village Grocery Opportunity

3,100sf Market in Premier Mixed-Use Complex



COMPASS
COMMERCIAL



Prime Location Within a Newly Renovated Complex – Situated at the signalized intersection of Hill St, Windmill Ln, and Jobs Ln, this **3,100sf market** occupies one of Southampton Village’s most visible and accessible corners, directly across from Agawam Park. Surrounded by public parking and steady year-round activity, the site benefits from strong pedestrian presence and convenient access.

Established Market Operation With Flexible Layout – The space features an open floor plan with soaring central ceilings and clerestory windows that flood the interior with natural light. Currently configured as a full-service grocery format, the layout supports a wide range of merchandising - from fresh and specialty categories to grab-and-go offerings - with **modified electric cooking capabilities** allowing expanded prepared-food orientation without full restaurant buildout.

Village Business Zoning With Multiple Use Pathways – In addition to continued grocery use, Village Business zoning supports a range of **retail, office, and personal service** uses, creating flexibility to refine the concept over time or reposition the space to match evolving operator needs.

Modern Complex With Long-Term Value – As part of a recently redeveloped commercial property, the unit is supported by updated infrastructure, refreshed façade, and complementary co-tenancy. This is a turnkey opportunity to operate an established market presence in one of the Hamptons’ most prestigious and supply-constrained retail environments.

Asking Rent: \$240,000 + NNN

Surrounding Businesses:

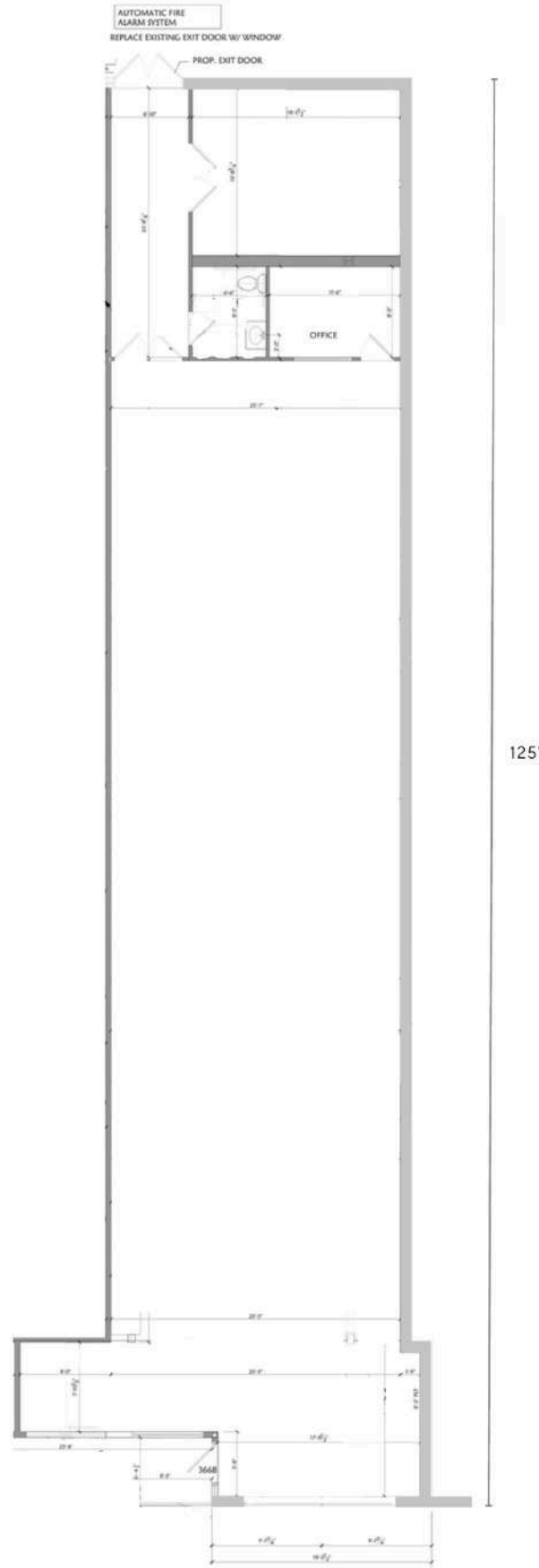
El Verano, Shippy’s, Limoncello Ristorante, Southampton Playhouse,
Southampton Cultural Center, Southampton Arts Center

Inquire with the Hamptons Commercial RE Team for additional information.









Floor plan, furniture, and fixture measurements and dimensions are approximate and are for illustrative purposes only. The representative gives no guarantee, warranty or representation as to the accuracy and completeness of the floor plan.



**HAMPTONS COMMERCIAL
REAL ESTATE TEAM**

**Apprx SqFt:
3,100**

Southampton Village



MAIN ST

- 1 Stop & Shop
- 2 CVS Pharmacy
- 3 Golden Pear Cafe
- 4 Omare
- 5 Boujaron Rugs
- 6 Steve Madden
- 7 Ranna Gill
- 8 Juice Press
- 9 Tenet
- 10 Mint Clothing Boutique
- 11 Brandy Melville
- 12 Edward Archer
- 13 Hampton Arrow Cleaners
- 14 Veronica Beard
- 15 Aerin
- 16 Main Street Optics
- 17 Flying Point Surf & Sport
- 18 75 Main
- 19 Southampton Chamber
- 20 Henry Lehr
- 21 Xanadu
- 22 Main Street Market
- 23 Tennis East
- 24 Verizon
- 25 Katherine Tess
- 26 Ralph's Barber Shop
- 27 The Fudge Company
- 28 Moscot
- 29 Corwin's Jewelers
- 30 SpaUnique
- 31 Ever After
- 32 The Westside
- 33 Hildreth's
- 34 Piccola Bella
- 35 London Jewelers
- 36 Bluemercury
- 37 Luxury Fashion Group

- 38 Breezin Up
- 39 Urban Soul
- 40 Herrick Hardware
- 41 Therapy Life & Style
- 42 Le Charlot
- 43 Club Monaco
- 44 Jorge L. Gómez Studio
- 45 Sharis Place
- 46 Sant Ambroeus
- 47 Handvaerk
- 48 Michael Kors
- 49 Brown Harris Stevens
- 50 Tamara Comolli
- 51 Zimmermann
- 52 Village Hall
- 53 Gorjana
- 54 Dopo Argento
- 55 Brachu Walker
- 56 LoveShackFancy
- 57 Cheese Shoppe
- 58 Contessa Gallery
- 59 Collette's Basement
- 60 Jenni Kayne
- 61 Peter Millar
- 62 Tate's Bake Shop

JOBS LN

- 63 Southampton Publick House
- 64 Bamboo
- 65 Coldwell Banker
- 66 Little Lucy's Accessories
- 67 Aloof Icon
- 68 Brazil Breeze
- 69 Hamptons Hot Yoga
- 70 J. McLaughlin
- 71 Everything But Water
- 72 Michelle Farmer Collaborate

- 73 Southampton Arts Center
- 74 Glenn Bradford Fine Jewelry
- 75 Charleston Shoe Co.
- 76 Eres
- 77 Carleen Ligozio
- 78 Asprey
- 79 Shoe-Inn
- 80 Carvel
- 81 Ruby & Jenna
- 82 Jennifer Miller Jewelry
- 83 Arthur T. Kalaher Fine Art
- 84 Ann Madonna Antiques
- 85 La Vie Style House
- 86 Ric Michel Fine Art
- 87 Polo Ralph Lauren
- 88 Marina St Barth
- 89 Jade Trau
- 90 Kevin Maple Salon
- 91 SFerra
- 92 Oscar Molina Gallery
- 93 Dazzelle
- 94 TaRoo
- 95 Hound Hill Design
- 96 Topiaire Flower Shop
- 97 Hidden Gem
- 98 Cashmere Emporium
- 99 Fivestory
- 100 Jetsam Studio
- 101 Roller Rabbit
- 102 Herbert & Rist Wine
- 103 Coco Cabana
- 104 Twin Hearts Vintage
- 105 Sea Green Designs
- 106 Stevenson's Toys
- 107 Bean 2 Tween
- 108 Douglas Elliman
- 109 Sean's Place
- 110 J & G Happy Feet

HAMPTON RD

- 111 Citarella
- 112 Starbucks
- 113 Alex Vinash
- 114 27 Hamptons Salon
- 115 The Perfect Purse
- 116 White's Apothecary
- 117 James Christian Cosmetics
- 118 Town & Country Real Estate
- 119 BuddhaBerry
- 120 Farm & Forage Market
- 121 Sip N Soda
- 122 AT&T
- 123 Uno Mas
- 124 Kelly's Cafe & Deli
- 125 Morphew World
- 126 Mattress Firm
- 127 Wells Fargo Advisors
- 128 Merrill Lynch
- 129 Runrunner Home

HILL ST

- 130 SLT
- 131 Little Bird Healing Spa
- 132 Gym Tech
- 133 Sorella Hair Design and Spa
- 134 Charles Schwab
- 135 The UPS Store
- 136 Gubbins Running Ahead
- 137 Hill Street Boxing
- 138 Optimum
- 139 Revolve Hair
- 140 Sunrise To Sunset Surf-Sport
- 141 Luxe Specialty Market
- 142 Bestie Nail Spa
- 143 Cosmic Nails & Spa

- 144 The Plaza Cafe
- 145 Southampton Inn
- 146 Claude's Restaurant
- 147 Lucia's Angels
- 148 Yippee Feet
- 149 LMS Design
- 150 CENTURY 21
- 151 Paul's
- 152 Barryville General Market
- 153 Corey Anderson Salon

WINDMILL LN

- 154 El Verano
- 155 New York Pilates
- 156 Pachute
- 157 Le Closet
- 158 The Beauty Bar
- 159 Biba Southampton
- 160 Le Shop x Riviera Maison
- 161 Par East Mortgage Co.
- 162 Job's Lane Jewelers
- 163 Hamptons Tan & Airbrush
- 164 Windmill Lane Bakery
- 165 Hampton Photo Arts
- 166 Johnson Fitness & Wellness
- 167 Rotations Bicycle Center
- 168 Shippy's
- 169 Nica B. Strunk, Attorney
- 170 La Corezza Salon
- 171 Capital One Bank
- 172 V&J Auto Body
- 173 Brownings Fitness

JAGGER LN

- 174 Four Oaks
- 175 Lamplighter Wines & Liquors
- 176 Pure Nail and Spa
- 177 Clean by Meurice
- 178 DeJesus Grocery
- 179 La Hacienda
- 180 Southampton Dry Cleaners

NUGENT ST

- 181 Rite Aid
- 182 Tutto il Giorno
- 183 Sotheby's Real Estate
- 184 Arais Designs
- 185 Inter-Science Research
- 186 Chic Beauty

HAMPTON RD

- 187 Aboff's Points
- 188 The Morley Agency
- 189 Lolly Nail Salon
- 190 La Parmagiana
- 191 Ovando

POND LN

- 192 Homenature
- 193 Southampton Cultural Center



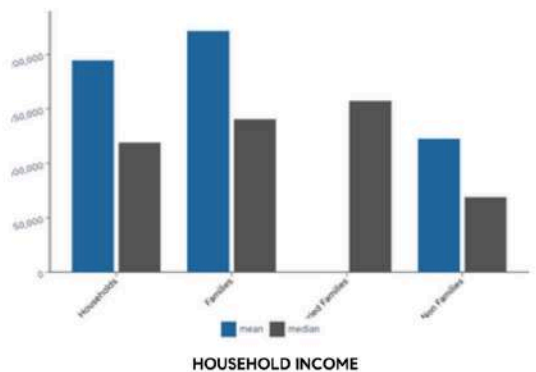
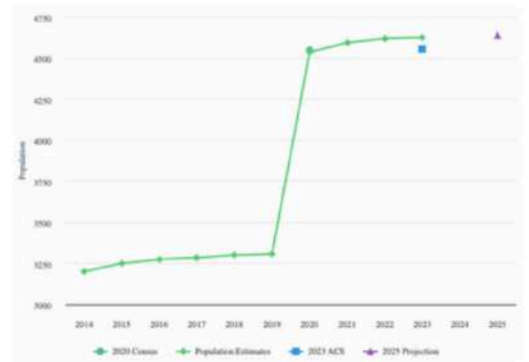
SOUTHAMPTON

Southampton is the largest hamlet within the Town of Southampton, located just 87 miles east of Manhattan. The area was settled in 1640 through Conscious Point and was later incorporated as a village in 1894. The estates, beaches, restaurants, shops, parks, farms, wineries, and proximity to New York City that Southampton has attracts international appeal.

As of 2023, Southampton has a population of 4,627, with an average household income of \$194,861. Southampton is currently growing at a rate of 0.2% annually, and its population is projected to increase to 4,641 in 2025.

Visitors can explore the charming boutique stores of Main Street, ranging from luxury fashion retailers to quaint home decor shops. History enthusiasts can step back in time at landmarks such as the Southampton Historical Museum or the Halsey House, a beautifully preserved colonial homestead. For those who prefer outdoor activities, Coopers Beach offers stunning ocean views, while local parks such as Agawam Park provide scenic spaces for picnics, walks, and family-friendly events.

The area is home to a variety of iconic restaurants and cafés, serving everything from fresh seafood to artisanal coffee. Southampton’s culinary scene is a perfect complement to its sophisticated appeal, with a broad range of options for all connoisseurs.



PARKS

ACCOMODATION

ATTRACTIONS

SHOPPING

- | | | | |
|---|--|--|---|
| <ul style="list-style-type: none"> • Agawam Park • Lola Prentice Memorial Park • Downs Family Park • Coopers Beach • Richard L. Fowler Nature Walk | <ul style="list-style-type: none"> • Southampton Inn • The 1708 House • Harpoon House • Villa Southampton Village • Southampton Village Motel | <ul style="list-style-type: none"> • Southampton Arts Center • Parrish Art Museum • Southampton History Museum • Southampton Cultural Center • Tate’s Bake Shop | <ul style="list-style-type: none"> • Flying Point Surf & Sport • Hildreth’s • TENET • London Jewelers • Ralph Lauren |
|---|--|--|---|

COMPASS COMMERCIAL



Hal Zwick

Lic. R.E. Salesperson
631.678.2460
hal.zwick@compass.com

Jeffrey Sztorc

Lic. R.E. Salesperson
631.903.5022
jeffrey.sztorc@compass.com

Sean Deery

Lic. R.E. Salesperson



HAMPTONS COMMERCIAL RE
ADVISORY TEAM