

120 NW 14th Avenue | Portland

# Pearl Place Office Space For Lease

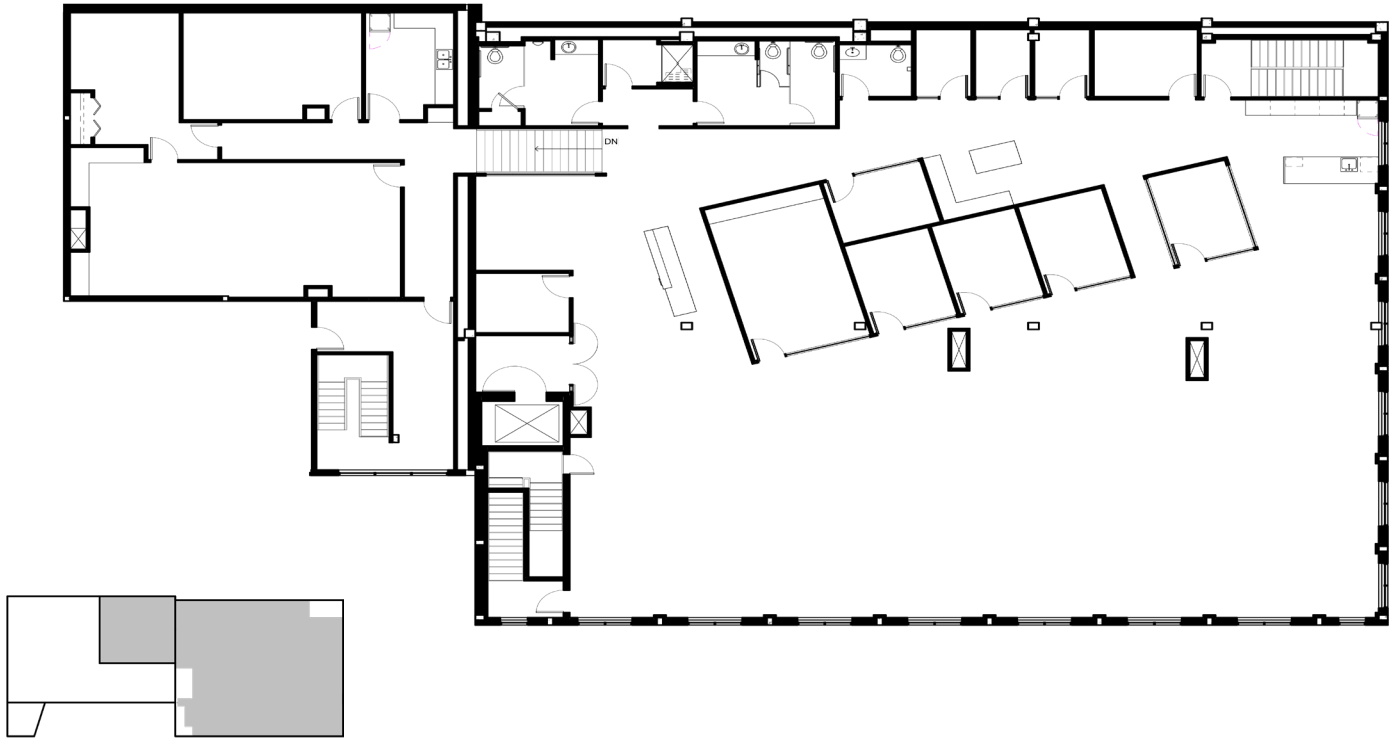
High end creative office space with secure parking in the heart of the Pearl District.

## Seth Platsman

Associate Vice President  
+1 503 542 5481  
seth.platsman@colliers.com



# Floor Plan



## Offering Summary Lease Highlights

- Rate: \$26.00/SF FSG
- Parking: 1/1000 secured
- Efficient blend of private offices and open space
- Excellent window line
- Private restrooms and showers
- Move-in ready condition



9,821 SF  
available





# Location Overview

The Pearl District is one of Portland's most vibrant and sought-after neighborhoods, known for its blend of upscale urban living, thriving businesses, and cultural attractions. Once an industrial area, the district has transformed into a dynamic hub featuring high-end retail, trendy restaurants, luxury residences, and creative workspaces.



Bike Score  
**100**



Walk Score  
**90**



Transit Score  
**65**





[View Online Listing](#)

120 NW 14th Avenue, Portland

**Seth Platsman**

Associate Vice President  
+1 503 542 5481  
seth.platsman@colliers.com

This document has been prepared by Colliers for advertising and general information only. Colliers makes no guarantees, representations or warranties of any kind, expressed or implied, regarding the information including, but not limited to, warranties of content, accuracy and reliability. Any interested party should undertake their own inquiries as to the accuracy of the information. Colliers excludes unequivocally all inferred or implied terms, conditions and warranties arising out of this document and excludes all liability for loss and damages arising there from. This publication is the copyrighted property of Colliers and/or its licensor(s). Copyright © 2025. All rights reserved. This communication is not intended to cause or induce breach of an existing listing agreement. Portland, OR.

[colliers.com](https://www.colliers.com)

Accelerating success.