

**TCP**  
**TOUCHSTONE**  
COMMERCIAL PARTNERS



**625** 2ND  
STREET

FOR LEASE  
BEST IN CLASS BRICK & TIMBER CREATIVE BUILDING



Corp. Lic. 01112906

**ZACH HAUPERT**

zhaupert@tcpcre.com | C 415.812.1219

**MICHAEL SANBERG**

msanberg@tcpcre.com | C 415.697.6088

**ETHAN MANN**

ethan@tcpcre.com | C 415.990.9127



# 625<sup>2ND</sup> STREET

625 2nd Street,  
San Francisco, CA 94107

---

- 03 ..... **PROPERTY SUMMARY**
- 06 ..... **FOURTH FLOOR**
- 10 ..... **THIRD FLOOR**
- 15 ..... **LOCATION OVERVIEW**
- 16 ..... **NEARBY AMENITIES**

625 2ND STREET

# PROPERTY SUMMARY

# 625<sup>2ND</sup> STREET

## PROPERTY SUMMARY

### ADDRESS

625 2nd Street, San Francisco, CA 94107

LOCATED IN SOUTH BEACH

### AVAILABLE SPACE

Fourth Floor

+/- 21,690 SQUARE FEET

Third Floor

+/- 15,000 SQUARE FEET

### RENTAL RATE

\$52 - \$80 / SF / Year, Industrial Gross

SUITE AND FLOOR DEPENDENT

### USE

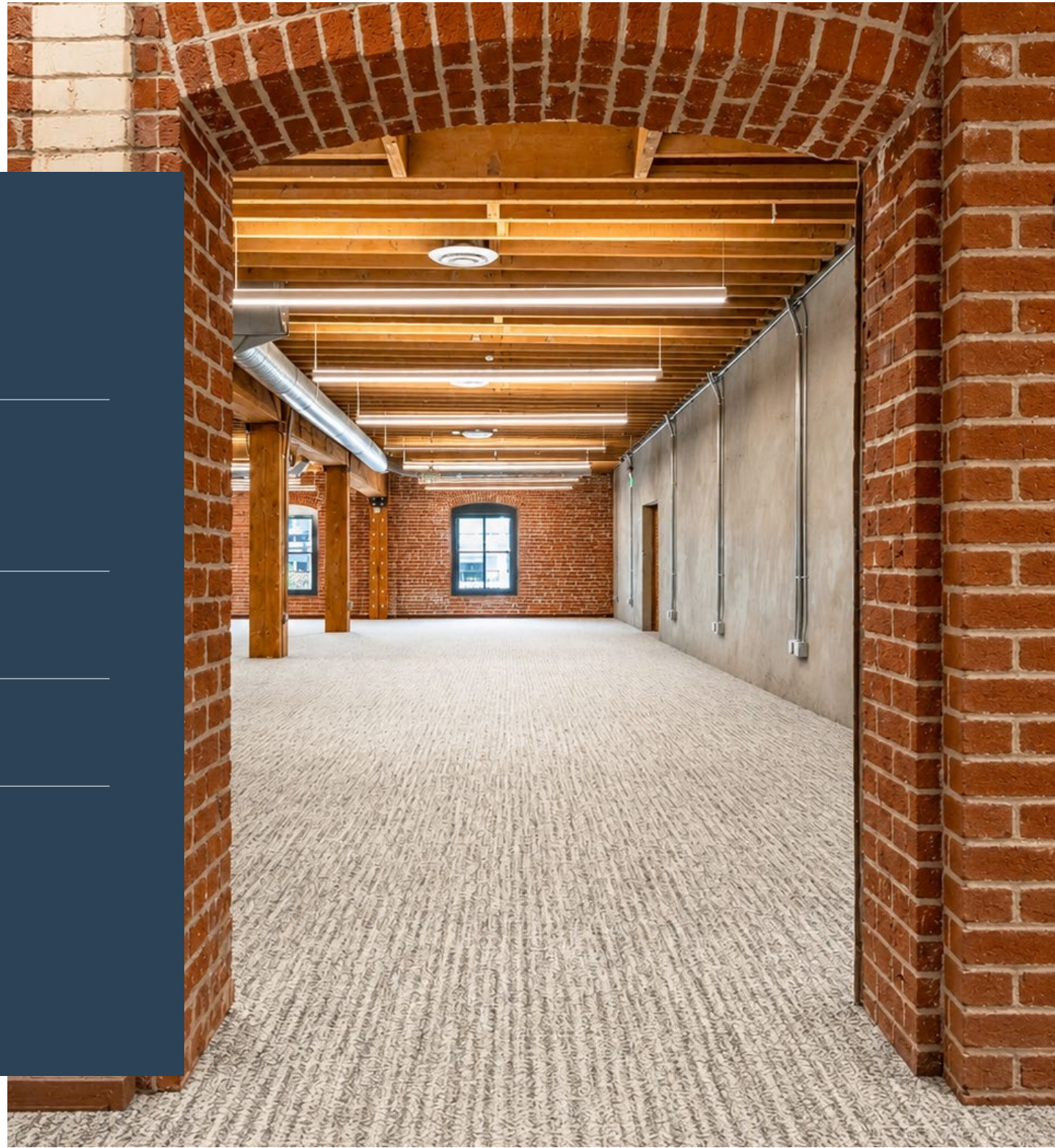
Office - Multi-Tenant Building

LEED GOLD & ENERGY STAR RATED PROPERTY

### AVAILABLE

Immediately

MOVE-IN READY CONDITION & TI'S AVAILABLE





UNIQUE OPPORTUNITY FOR  
TENANTS OF ALL SIZES



GREAT SIGNAGE AND  
VISIBILITY OPPORTUNITIES



FULLY RENOVATED CREATIVE  
BRICK & TIMBER BUILDING



LEED GOLD & ENERGY STAR  
RATED



FULL HVAC THROUGHOUT



LOCATED IN SOUTH BEACH,  
ACCESS TO MANY AMENITIES



WALKING DISTANCE TO  
TRANSIT OPTIONS



ON-SITE PARKING



625 2ND  
STREET

FOURTH FLOOR

# 625<sup>2ND</sup> STREET

## FOURTH FLOOR

### ADDRESS

625 2nd Street, San Francisco, CA 94107

### AVAILABLE SPACE

+/- 21,690 Square Feet

### RENTAL RATE

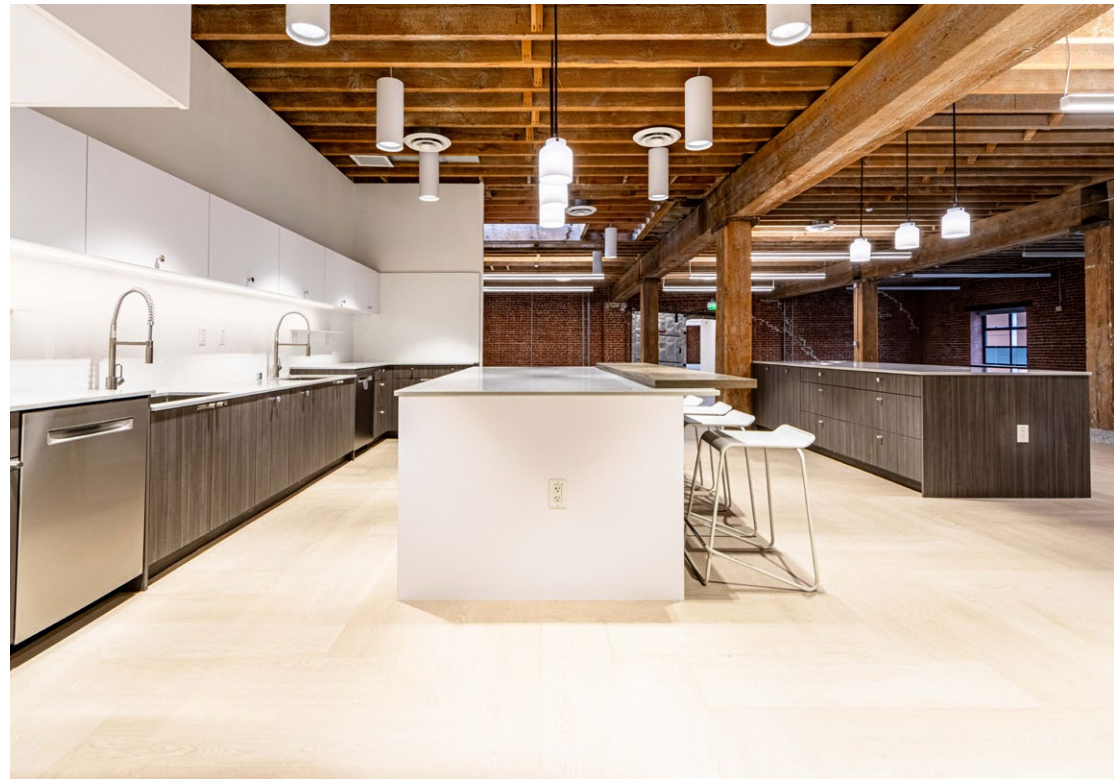
\$80 / SF / Year, Industrial Gross

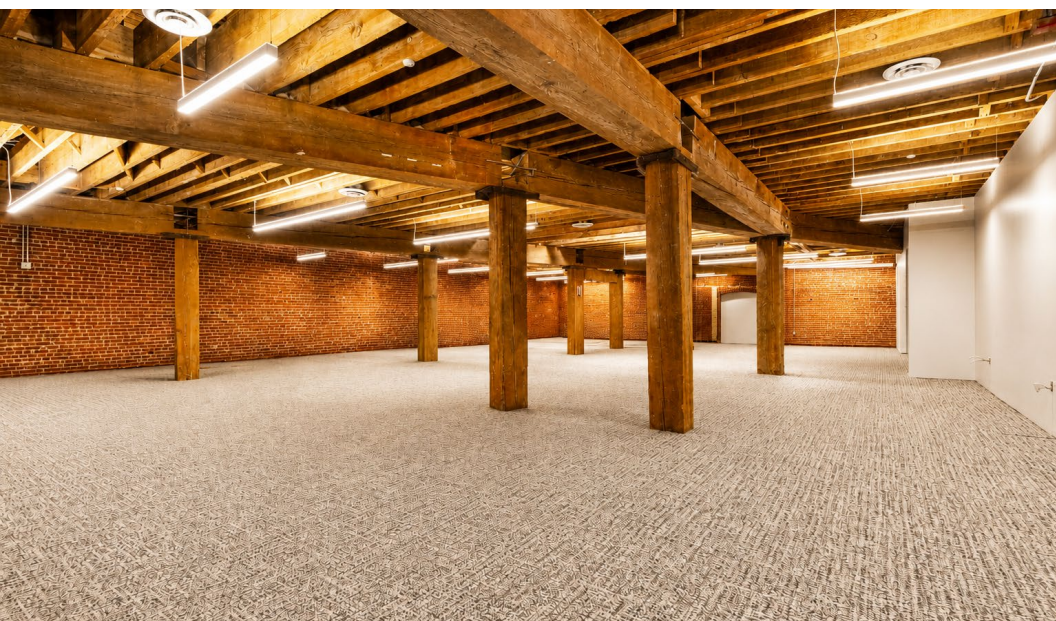
### AVAILABLE

Immediately

### SUITE ATTRIBUTES

- Beautifully Renovated Brick & Timber Space
- High Ceilings w/ Skylights & Abundant Natural Light
- Spec Work In Progress
- Full HVAC Throughout





Suite 401: +/- 21,690 Square Feet



625<sup>2ND</sup>  
STREET

THIRD FLOOR



# 625<sup>2ND</sup> STREET

## THIRD FLOOR

### ADDRESS

625 2nd Street, San Francisco, CA 94107

### AVAILABLE SPACE

Suite 300: +/- 15,000 Square Feet

### RENTAL RATE

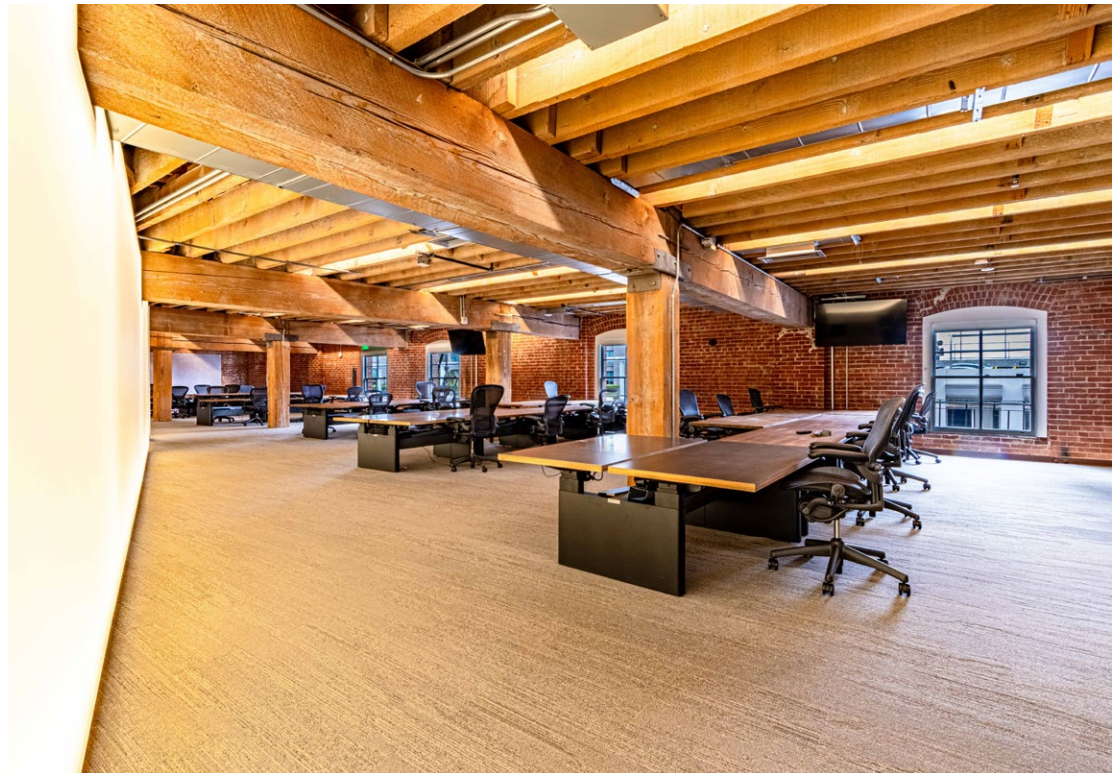
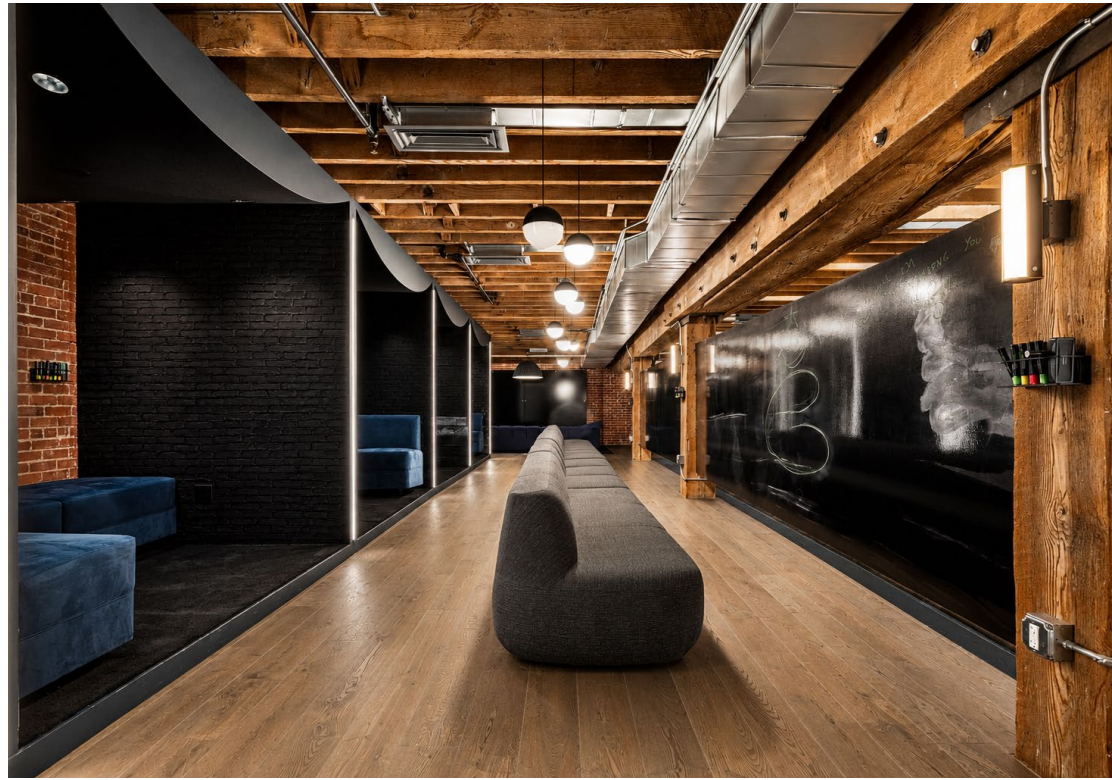
\$52 / SF / Year, Industrial Gross

### AVAILABLE

Immediately

### FLOOR ATTRIBUTES

- Move-In Ready Brick & Timber Space
- Furniture Available
- Abundance of Private Rooms & Call Rooms
- Full HVAC Throughout



### SUITE 300 ATTRIBUTES

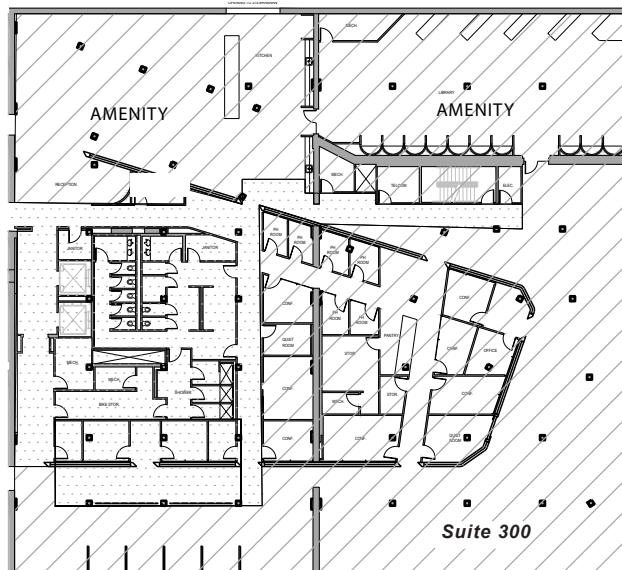
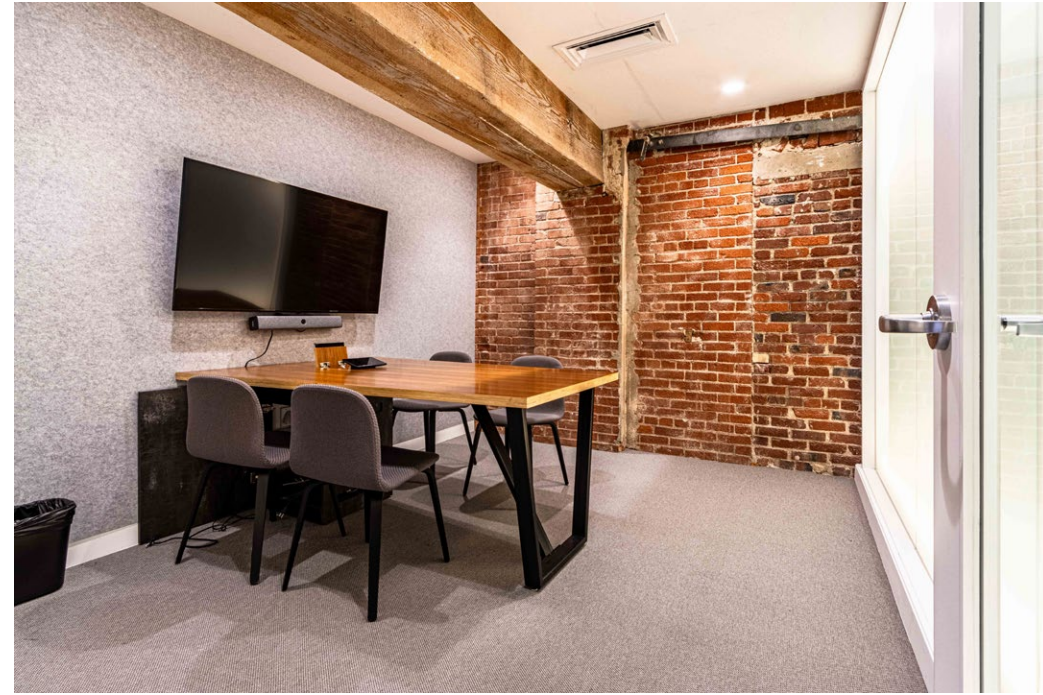
AVAILABLE SPACE +/- 15,000 Square Feet

RENTAL RATE \$52 / SF / Year, Industrial Gross

AVAILABLE Immediately

#### SUITE NOTES

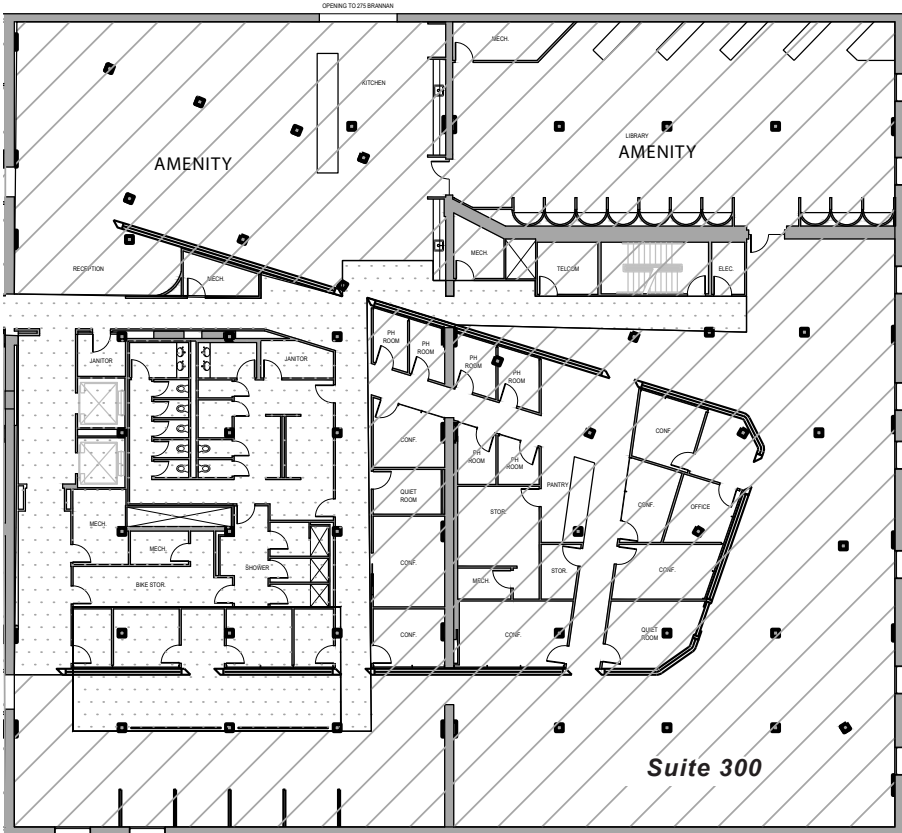
- Abundance of Meeting Rooms
- Furniture & TI's Available
- Full HVAC Throughout
- Brick & Timber w/ Window Line
- Kitchenette / Break Area



# 625<sup>2ND</sup> STREET

## FLOOR PLAN

Suite 300: +/- 15,000 Square Feet



625 2ND STREET

LOCATION OVERVIEW & AMENITIES



# 625<sup>2ND</sup> STREET

## LOCATION OVERVIEW

### LOCATION OVERVIEW

Desirable South Park location, walkable to nearby amenities and to surrounding neighborhoods.



**03 MIN** to King St MUNI  
**10 MIN** to 4th St Caltrain  
**20 MIN** to Montgomery BART



**05 MIN** to Financial District  
**06 MIN** to Union Square  
**10 MIN** to Mission District



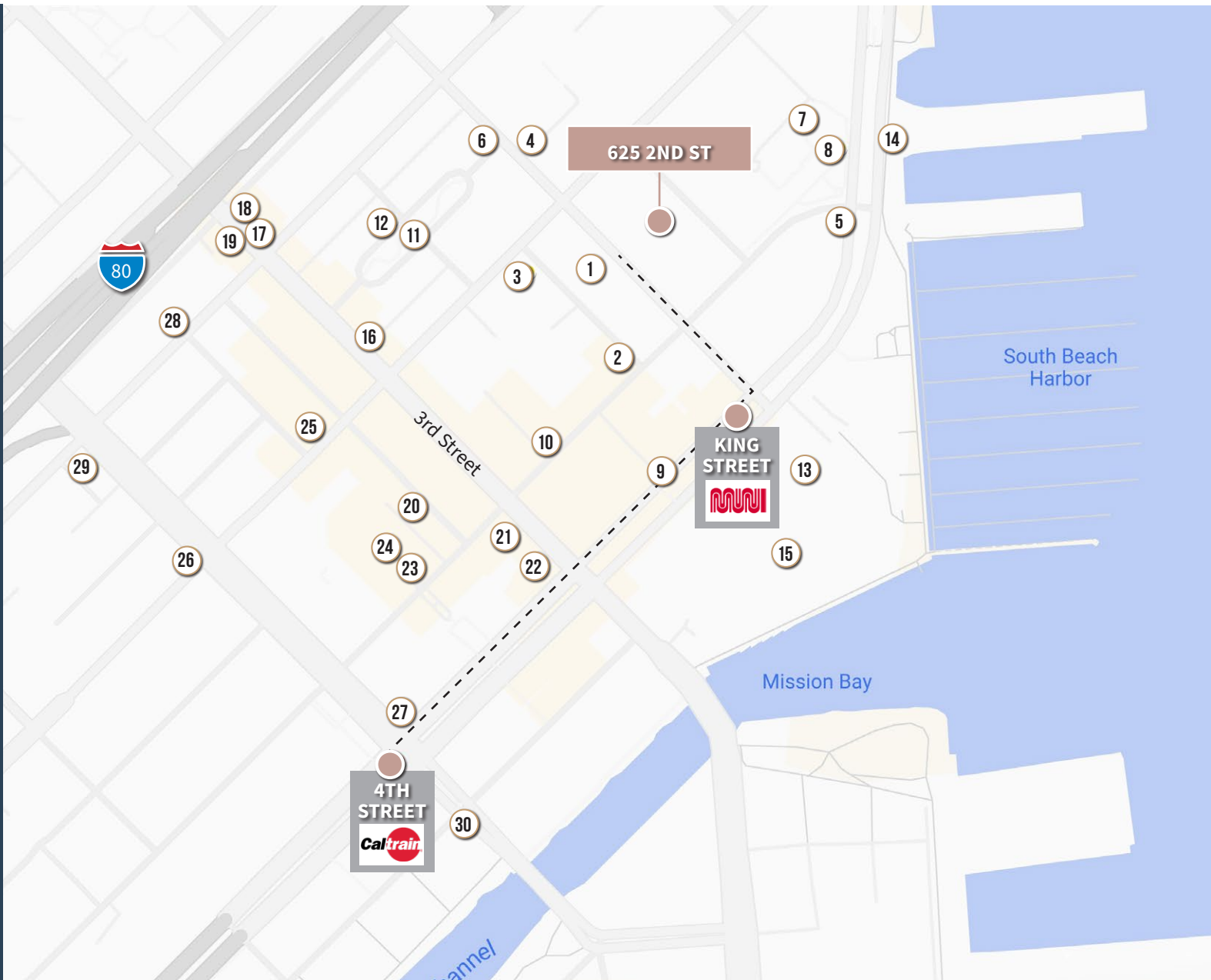
**03 MIN** to 80 On-Ramp  
**04 MIN** to 280 On-Ramp  
**07 MIN** to 101 On-Ramp



# 625<sup>2ND</sup> STREET

## NEARBY AMENITIES

- 1.....SAJJ Mediterranean
- 2.....Merkado
- 3.....ROOH SF
- 4.....21st Amendment
- 5.....South Beach Cafe
- 6.....Blue Bottle Coffee
- 7.....House Of Hunan Restaurant
- 8.....Town's End Brunch
- 9.....BarVIA
- 10.....Saison
- 11.....South Park
- 12.....Caffe Centro SP
- 13.....Super Duper Burger
- 14.....Pier 38
- 15.....Oracle Park
- 16.....Golden Goat Coffee
- 17.....Flour & Branch
- 18.....Garaje
- 19.....Hakashi Japanese Sushi
- 20.....Little Skillet
- 21.....Taco Bell Cantina
- 22.....Lucky Strike San Francisco
- 23.....Cafe Okawari
- 24.....ROOFTOP 25
- 25.....Brickhouse Cafe & Bar
- 26.....Marlowe
- 27.....Safeway
- 28.....Black Hammer Brewing
- 29.....Thriller Social Club
- 30.....Philz Coffee



# 625<sup>2ND</sup> STREET

## NEARBY AMENITIES



ORACLE PARK



SAISON



BLUE BOTTLE COFFEE



LITTLE SKILLET



ROOFTOP 25



# 625 2ND STREET

**TCP**  
**TOUCHSTONE**  
COMMERCIAL PARTNERS

Corp. Lic. 01112906  
www.tcp.com

**ZACH HAUPERT** DRE # 01822907  
zhaupert@tcp.com | C 415.812.1219

**MICHAEL SANBERG** DRE # 01930041  
msanberg@tcp.com | C 415.697.6088

**ETHAN MANN** DRE # 0222326  
ethan@tcp.com | C 415.990.9127

This document has been prepared by Touchstone Commercial Partners for advertising and general information only. Touchstone Commercial Partners makes no guarantees, representations or warranties of any kind, expressed or implied, regarding the information including, but not limited to, warranties of content, accuracy and reliability. Any interested party should undertake their own inquiries as to the accuracy of the information. Touchstone Commercial Partners excludes unequivocally all inferred or implied terms, conditions and warranties arising out of this document and excludes all liability for loss and damages arising there from. This publication is the copyrighted property of Touchstone Commercial Partners and/or its licensor(s). ©2026. All rights reserved.