

# FOR LEASE

## DAVIS PAVILION

**DAVIS PAVILION**  
697-719 DAVIS ROAD  
STOCKBRIDGE, GA 30281

AMERICAN CAPITAL PROPERTIES

**LOCATED IN WALMART ANCHORED SHOPPING CENTER**



## OVERVIEW

- » Located in the Walmart Supercenter on N Henry Blvd and Lake Spivey Pkwy in Stockbridge
- » Single-story retail center with abundant parking and three points of access (two from Davis Rd, the other to the neighboring Walmart)
- » Excellent retail tenant mix with nationally recognized tenants such as Game Stop, CATO and Shoe Show
- » Surrounding community is currently experiencing significant growth in population and commerce

## AVAILABLE SPACES

- » 2,000 - 4,000 sf
- » Design & Buildout Available

## LOCATION

- » Easily accessible location within one mile of I-675 and I-75
- » One of the busiest retail corridors in Stockbridge
- » Stockbridge, GA, is one of metro-Atlanta's most popular suburban communities

## ASKING RATE

- » Contact Agent

## SPACE AVAILABLE

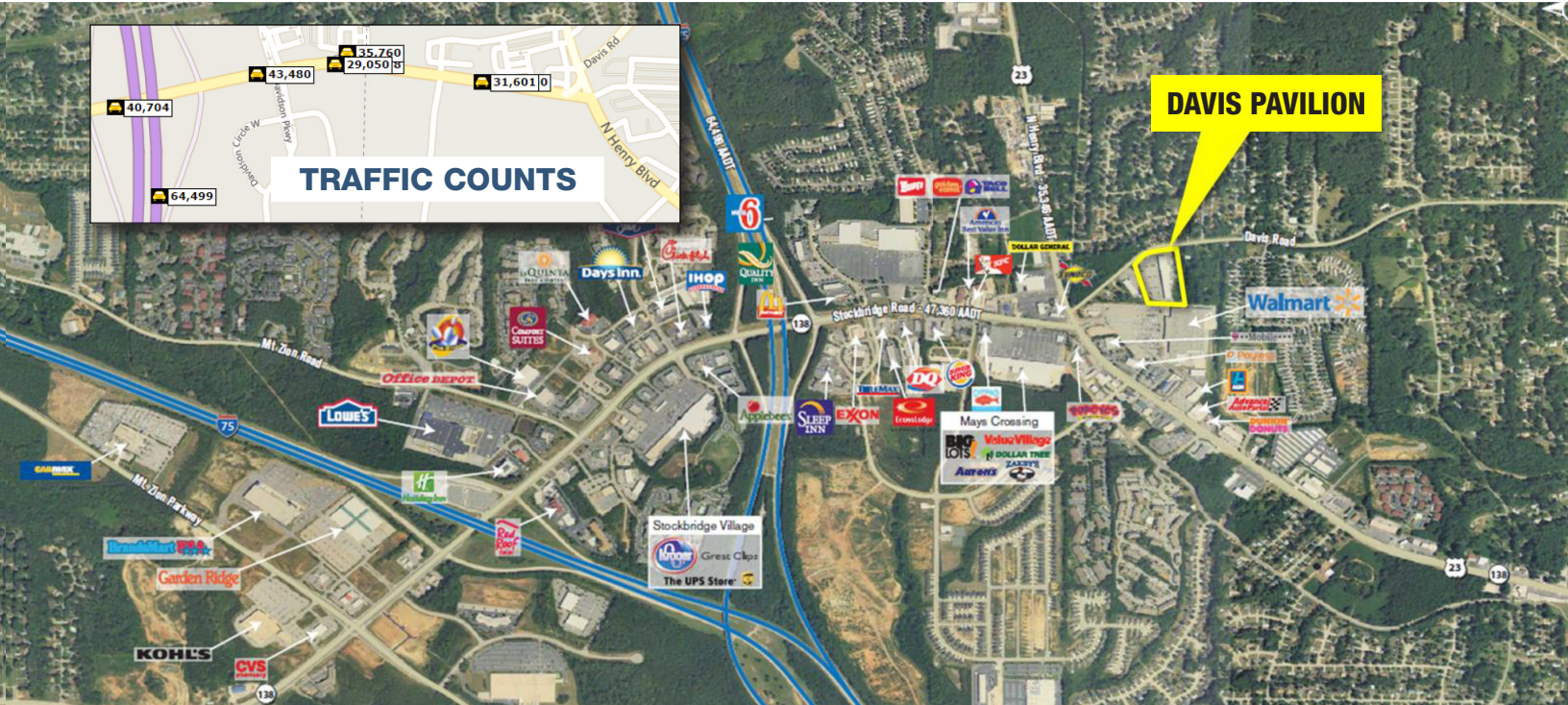
- » 1,200 - 4,000 sf

## FOR LEASING INFORMATION, PLEASE CONTACT:

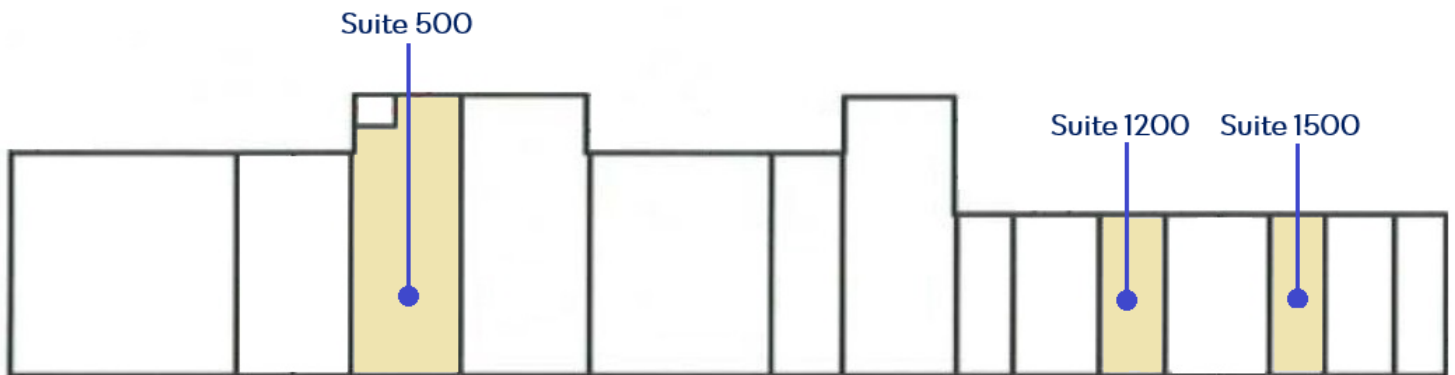
KENT WALKER | 770.530.0896  
KENTWALKER@AMERICANCAPITALPROPERTIESLLC.COM

FOR OTHER AVAILABILITY, VISIT US AT [WWW.ACP-SE.COM](http://WWW.ACP-SE.COM)

**AERIAL MAP | TRAFFIC COUNTS | BUILDING FLOOR PLAN**



**Suite Availability**



**FOR LEASING INFORMATION, PLEASE CONTACT:**

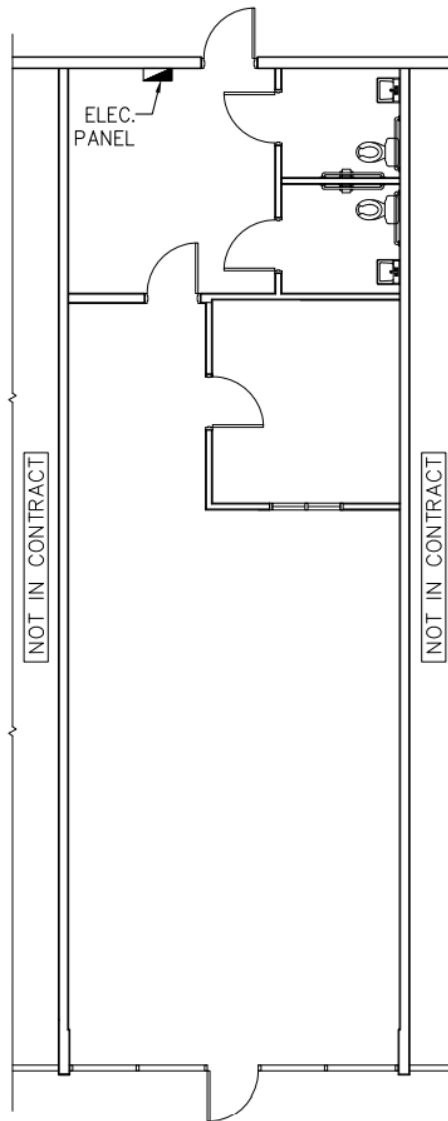
KENT WALKER | 770.530.0896  
 KENTWALKER@AMERICANCAPITALPROPERTIESLLC.COM

FOR OTHER AVAILABILITY, VISIT US AT [WWW.ACP-SE.COM](http://WWW.ACP-SE.COM)

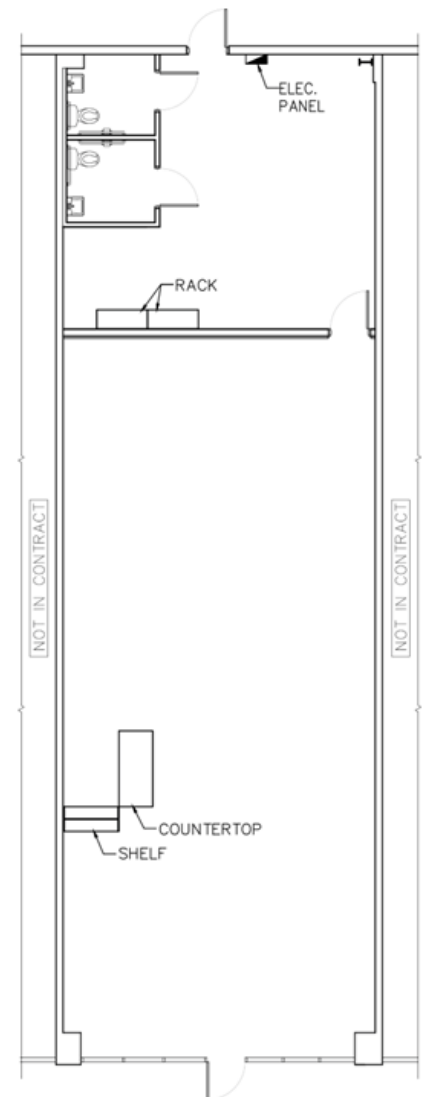
## AVAILABLE FLOOR PLANS

SUITE	SQ FT
500	4,000 sf
1200	1,200 sf
1500	1,200 sf

### Suite 1200



### Suite 1500



**FOR LEASING INFORMATION, PLEASE CONTACT:**

KENT WALKER | 770.530.0896  
KENTWALKER@AMERICANCAPITALPROPERTIESLLC.COM

FOR OTHER AVAILABILITY, VISIT US AT [WWW.ACP-SE.COM](http://WWW.ACP-SE.COM)

## ADDITIONAL PHOTOS



**FOR LEASING INFORMATION, PLEASE CONTACT:**

KENT WALKER | 770.530.0896

KENTWALKER@AMERICANCAPITALPROPERTIESLLC.COM

FOR OTHER AVAILABILITY, VISIT US AT [WWW.ACP-SE.COM](http://WWW.ACP-SE.COM)