

OFFICE SPACE FOR LEASE

215 NORTH H ST.
LOMPOC, CA

PART OF NEWLY RENOVATED INTERIOR

EXCLUSIVELY LISTED BY

No warranty or representation as to the accuracy of the foregoing information. Terms of sale, lease, and availability are subject to change or withdrawal without notice.



LEE & ASSOCIATES
COMMERCIAL REAL ESTATE SERVICES

Tom Davidson
tdavidson@lee-associates.com
D 805.588.7777
CalDRE #0595846

LISTING SUMMARY

PROPERTY OVERVIEW

High Image office or retail location in the heart of downtown Lompoc with frontage on H Street. Newly created suite in front of the new optical surgery center. Build to suit tenant improvements. Spacious suite with high ceilings and plenty of natural light. Ample parking.

TOTAL SIZE: 2,938 SF

LEASE RATE: \$4,400/Mo. Net

RESTROOM: Yes

PARKING: 8

HVAC: Yes

ZONING: OTC

TERM: Negotiable

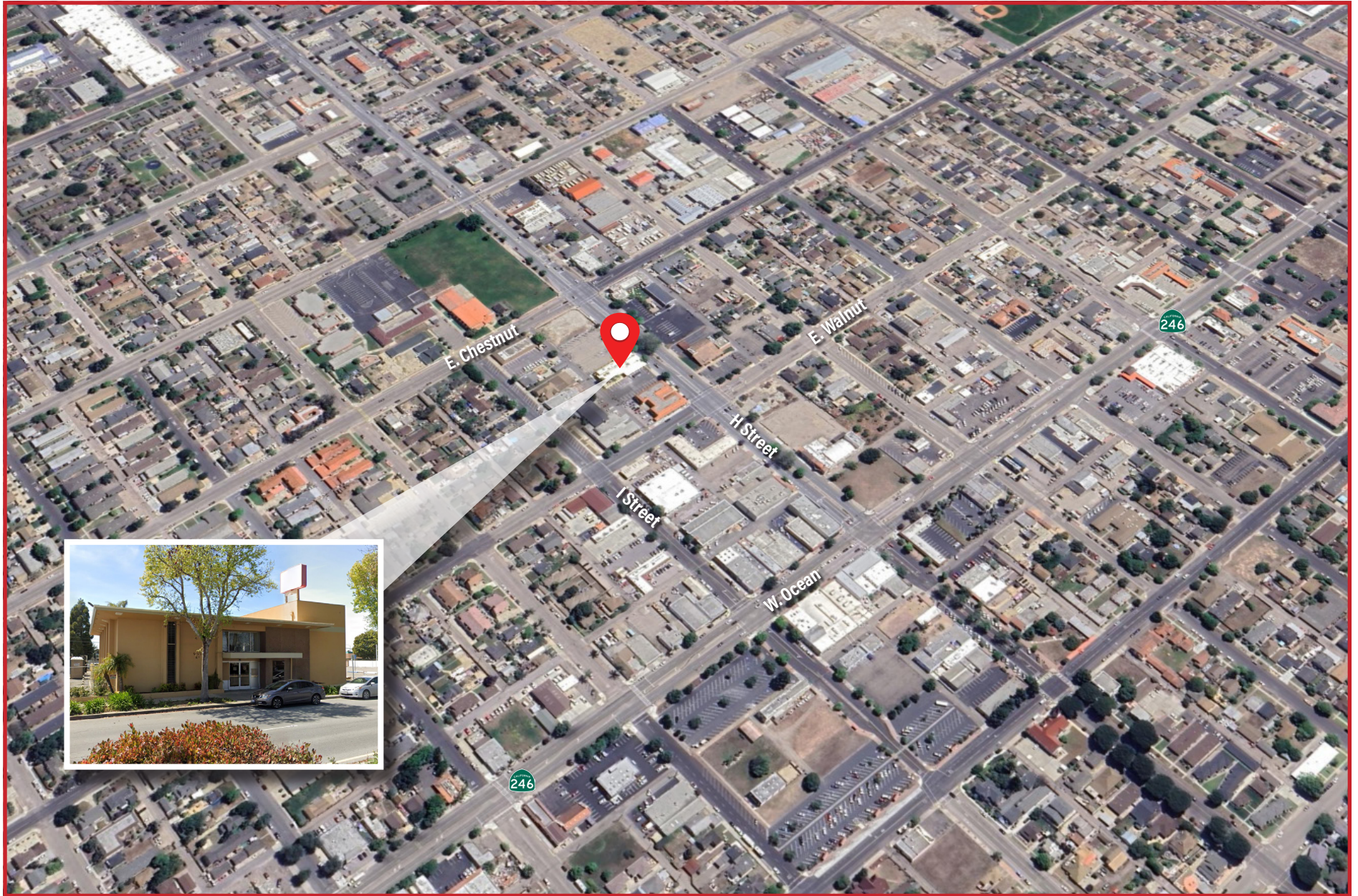
AVAILABLE: Now

APN: 085-081-015

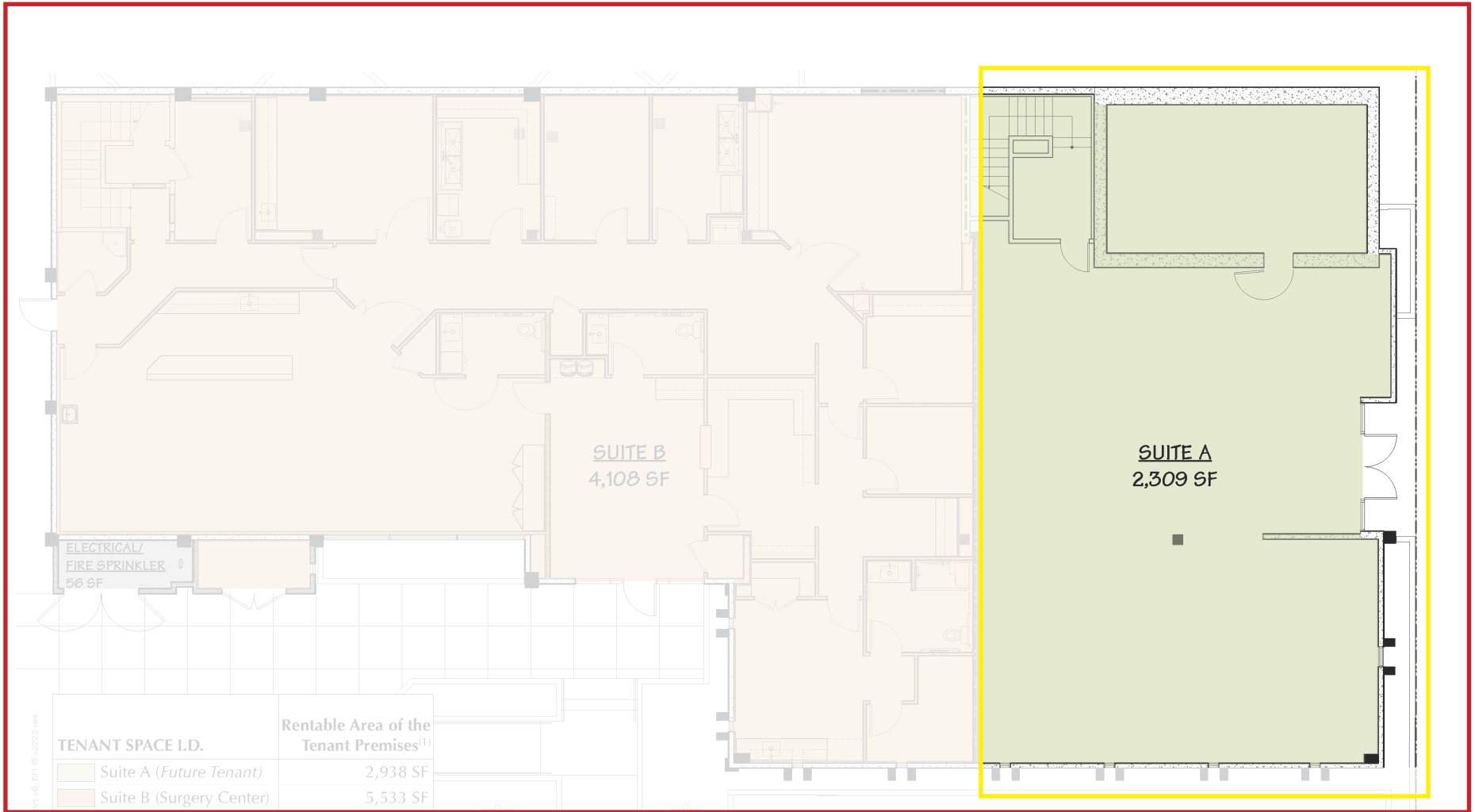
215 N. H STREET, LOMPOC, CA

2

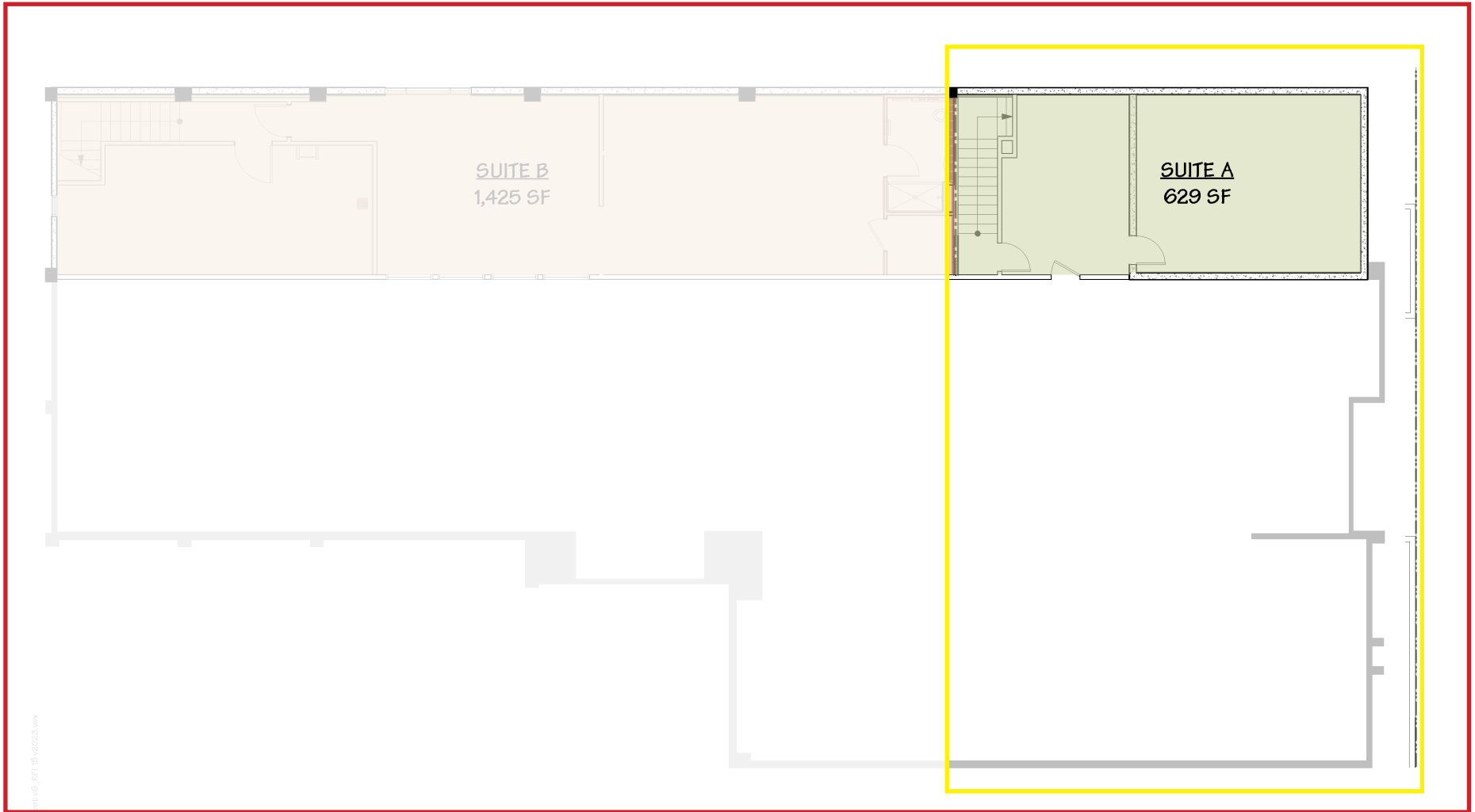
LOCATION CITY OF LOMPOC



FIRST FLOOR PLAN



SECOND FLOOR PLAN



20230315_061115

KEY FACTS

POPULATION	3 MILES	5 MILES	10 MILES
Total Population	41,709	52,386	58,854
Average Age	33.9	35.1	35.0
HOUSEHOLDS & INCOME			
Total Households	14,040	17,107	19,260
# of Persons per HH	3.0	3.1	3.1
Average HH Income	\$72,735	\$78,405	\$80,078
Median Housing Value	\$289,661	\$312,170	\$329,416

** Demographic data derived from 2020 ACS - US Census*

