

# Glisan Corporate Park

Portland, OR

## Key Facts

Property type Industrial space

Building size 201,341 SF

Space available 55,529 SF



## Contact Us

Learn more about this property or schedule a tour by reaching out to our local investment and leasing officer.

**Chad Rawlings**

+1 (206) 310-4229

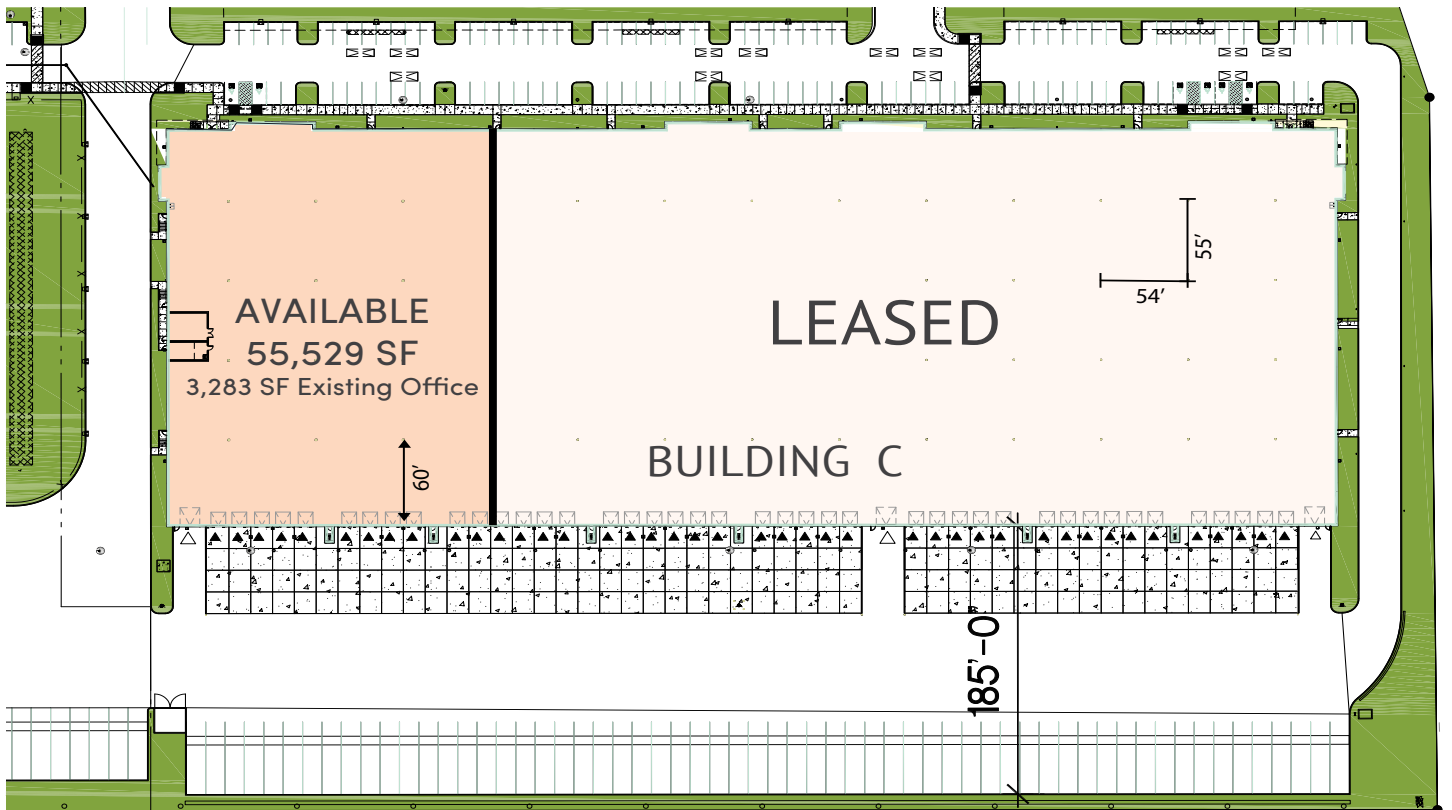
[chad.rawlings@eqtpartners.com](mailto:chad.rawlings@eqtpartners.com)

# Glisan Corporate Park

Portland, OR

## BUILDING SPECIFICATIONS

Available Space: 55,529 SF
Office Space: 3,283 SF
Clear Height: 32'
Dock Doors: 11 (8 w/ 3,000 lb. levelers)
Drive-In Doors: 1
Parking: 118 Auto Spaces
Truck Court: 185'
Lighting: LED Motion Sensor Warehouse Lighting
Power: 1,200 Amps @ 480 Volt Available
Fire Protection: ESFR Sprinkler System



### Contact Us

Learn more about this property or schedule a tour by reaching out to our local investment and leasing officer.

**Chad Rawlings**

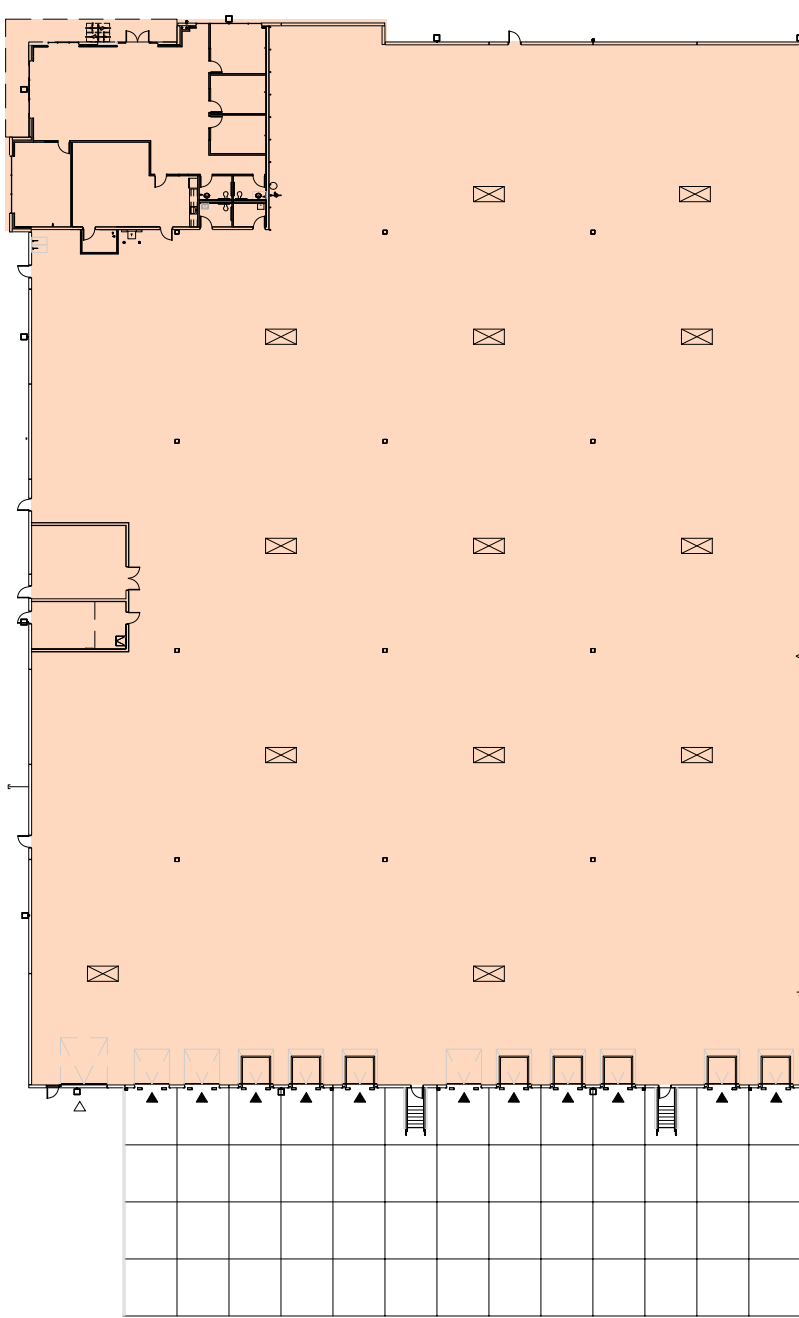
+1 (206) 310-4229

chad.rawlings@eqtpartners.com

# Glisan Corporate Park

Portland, OR

FLOOR PLAN - 55,529 SF



## Contact Us

Learn more about this property or schedule a tour by reaching out to our local investment and leasing officer.

**Chad Rawlings**

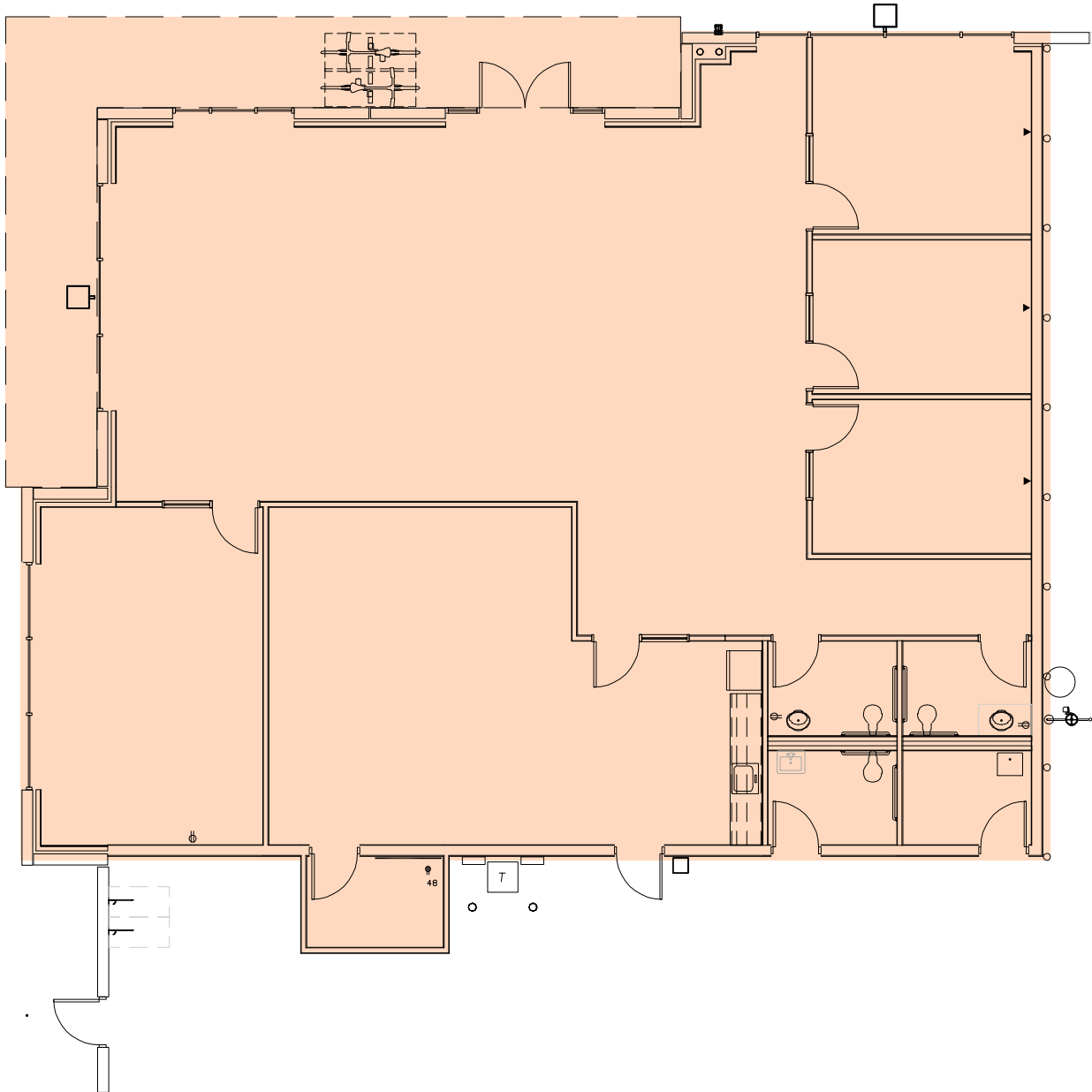
+1 (206) 310-4229

[chad.rawlings@eqtpartners.com](mailto:chad.rawlings@eqtpartners.com)

# Glisan Corporate Park

Portland, OR

OFFICE PLAN - 3,283 SF



## Contact Us

Learn more about this property or schedule a tour by reaching out to our local investment and leasing officer.

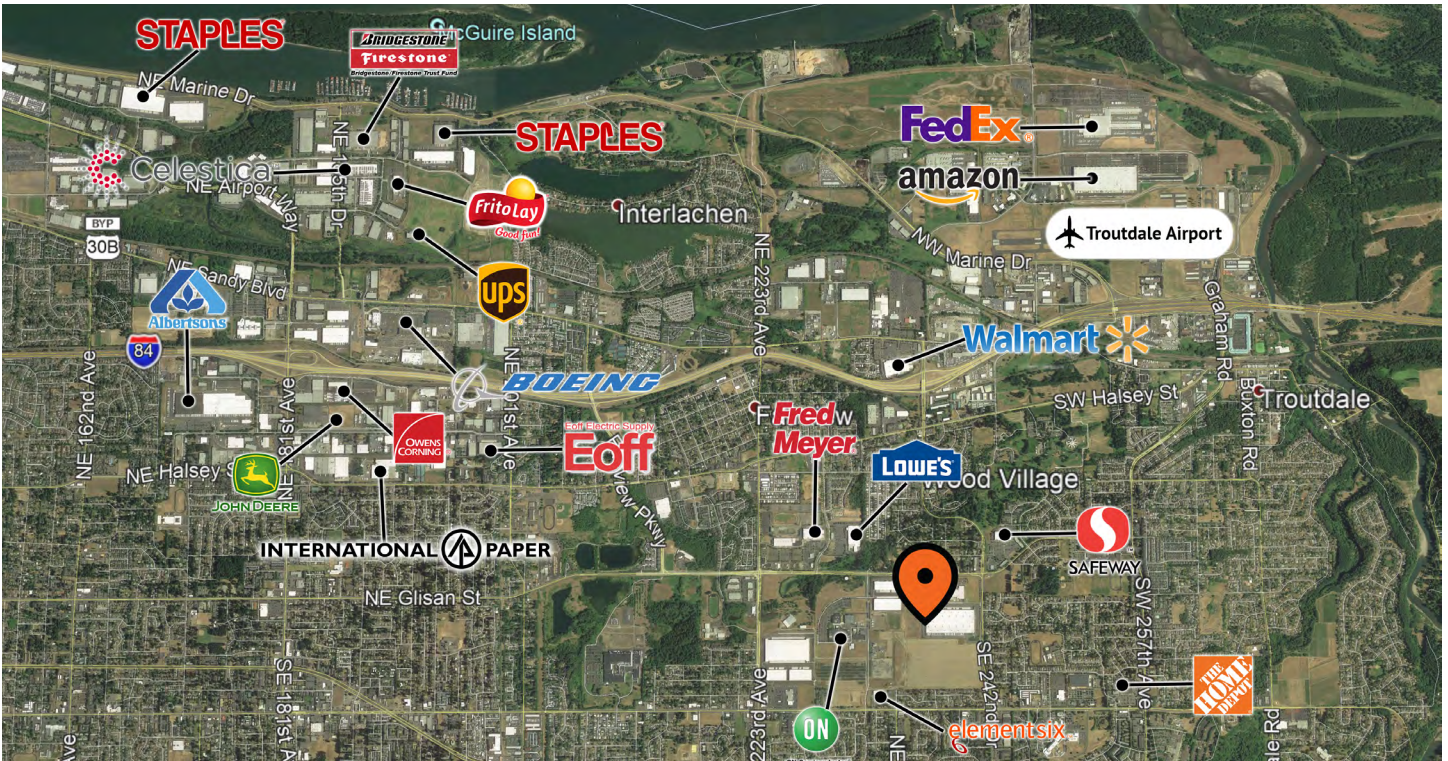
**Chad Rawlings**

+1 (206) 310-4229

[chad.rawlings@eqtpartners.com](mailto:chad.rawlings@eqtpartners.com)

# Glisan Corporate Park

Portland, OR



## Contact Us

Learn more about this property or schedule a tour by reaching out to our local investment and leasing officer.

**Chad Rawlings**

+1 (206) 310-4229

chad.rawlings@eqtpartners.com